

FOR LEASE

Office Spaces



FOR LEASE
\$12.50/sf NNN

Jeff Brewer

jbrewer@pequotcommercial.com

Steve Becker

sbecker@pequotcommercial.com

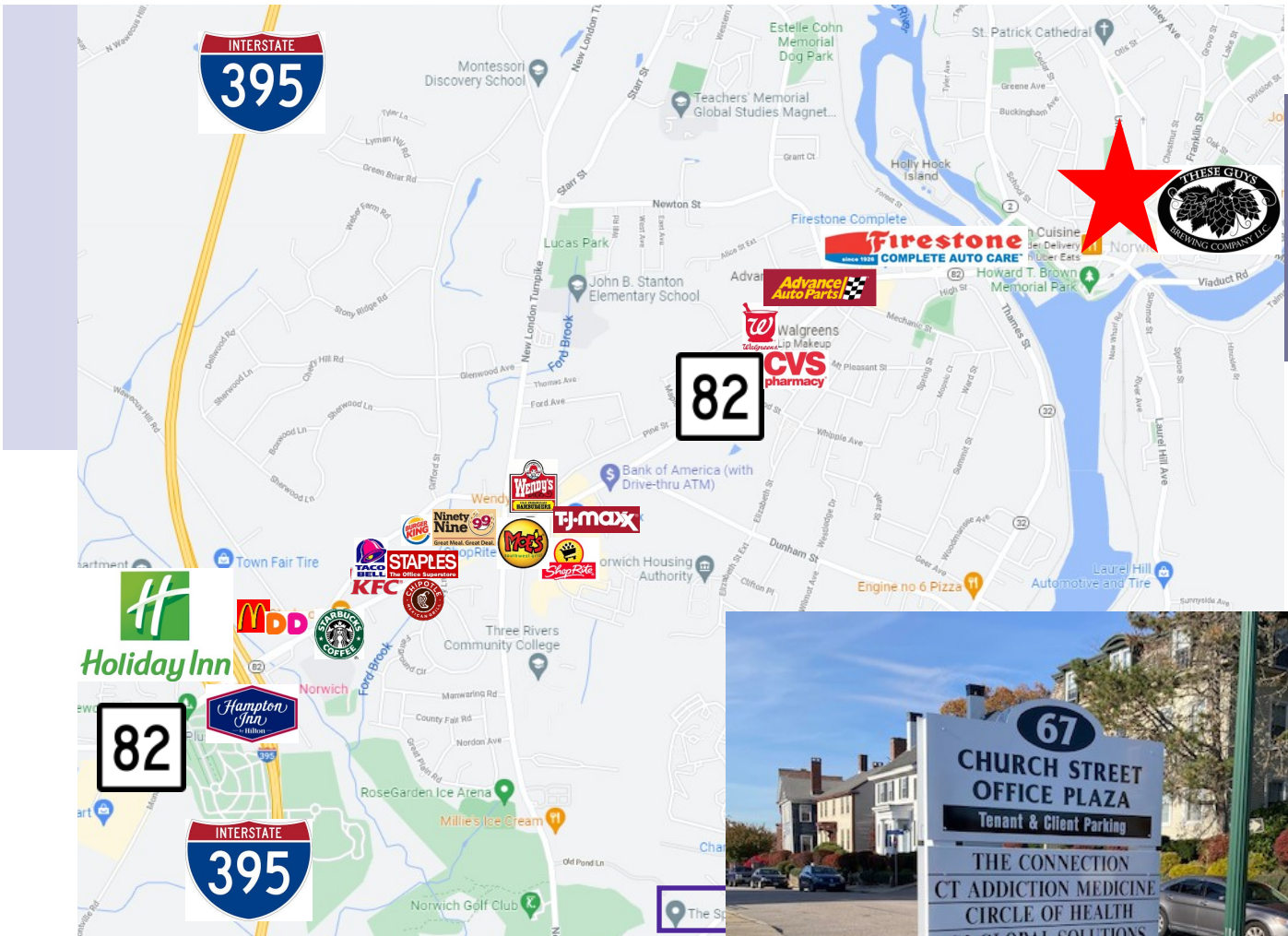
Pequot Commercial

15 Chesterfield Road, Suite 4
East Lyme, CT 06333

860-447-9570

860-444-6661 Fax

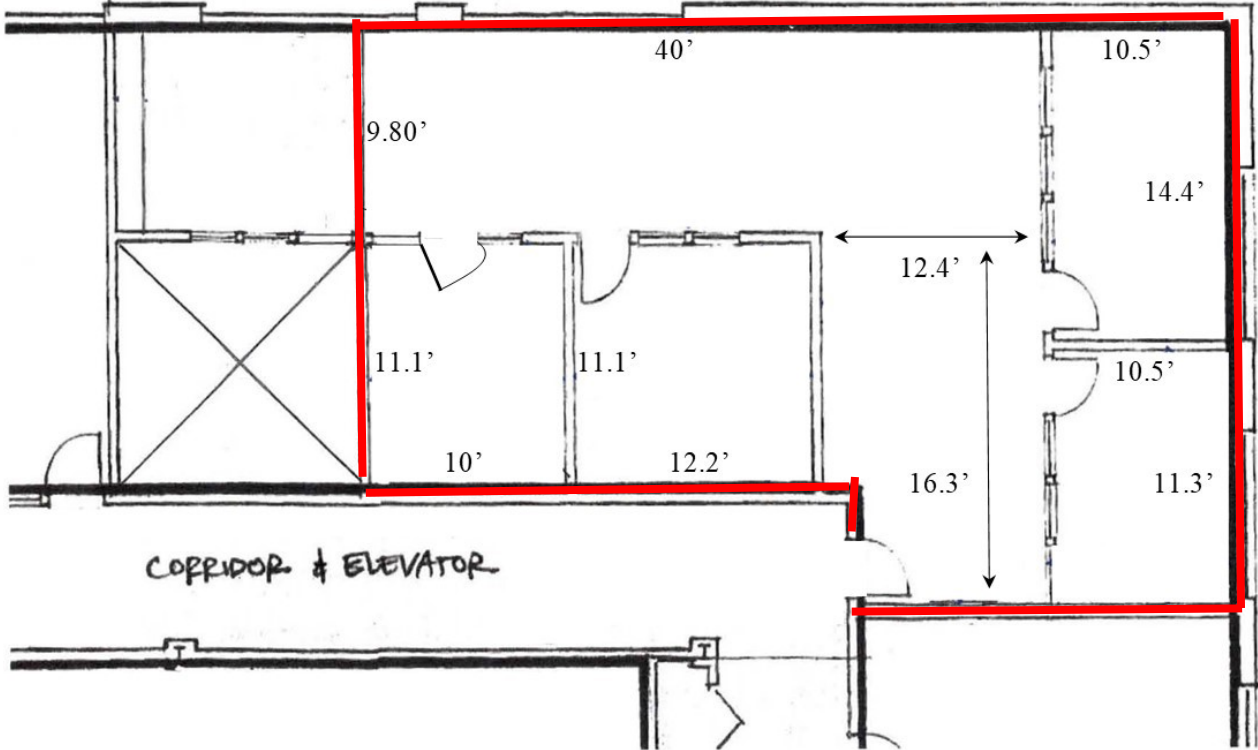
- ≈ Two office spaces available on 3rd floor of the former Norwich Savings Bank in Downtown Norwich. Beautifully maintained building with elevators.
- ≈ Entrance is at 67 Church St, leading directly onto the 3rd floor.
- ≈ Space #1 1,230sf; 4 offices, reception, waiting room
- ≈ Space #2 1,000sf; 2 offices, reception, waiting room
- ≈ Handicapped accessible
- ≈ Public Water/Sewer/Natural Gas; Central A/C
- ≈ Off-street parking 63+/-



DEMOGRAPHICS	3 MILE	5 MILE	10 MILE
Total Population	34,550	51,341	109,684
Total Households	14,686	21,721	44,163
Household Income \$0—\$30,000	24.69%	22.32%	18.45%
\$30,001-\$60,000	27.88%	25.32%	22.42%
\$60,001-\$100,000	24.76%	26.55%	27.18%
\$100,001+	22.91%	25.81%	31.95%

Information deemed reliable but not guaranteed and offerings subject to errors, omissions, change of price or withdrawal without notice.

Space #3-1 1,230sf



Space #3-2 1,000sf

