

## PROPERTY DETAILS

- 2,080 SF Available
- **\$1.55/SF Gross (\$3,224.00) Per Month**
- 10' x 10' GL Door
- 15' Clear Height
- 200 Amp, 240 V, 3 Phase Power
- 320 SF of Office Space (Reception & Private)
- HVAC in Office & Warehouse
- 400 SF Bonus Mezzanine
- Professionally Managed Business Park
- Common Area Maintenance Fee:  
\$.10/SF (\$208.00) Per Month

LOCAL EXPERTISE. INTERNATIONAL REACH. WORLD CLASS.

### Max P. Eddy

Associate | DRE# 02163858

P: +1(562) 354-2538

E: meddy@leelalb.com

### Brandon Carrillo

Principal | DRE# 01745362

P: +1(562) 354-2510

E: bcarrillo@leelalb.com

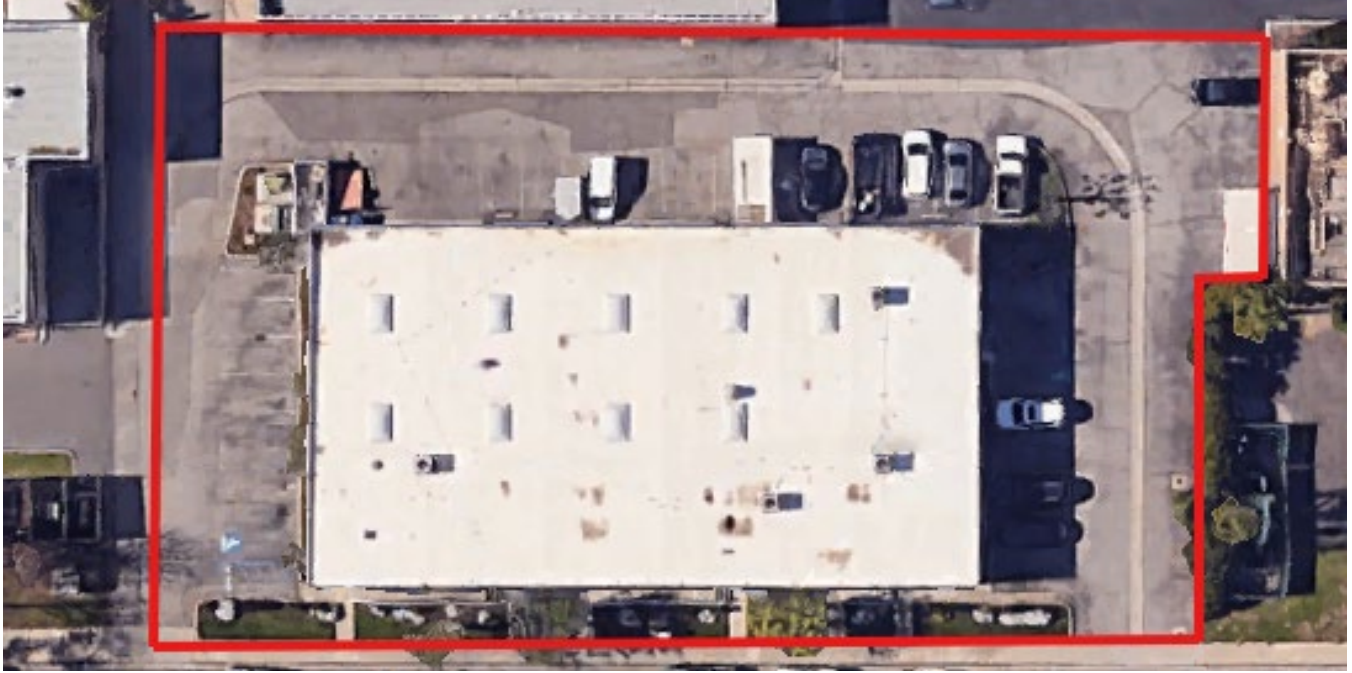
### Garrett Massaro, SIOR

Principal | DRE# 01771471

P: +1(562) 354-2516

E: gmassaro@leelalb.com

Copyright © Lee & Associates. All rights reserved. No part of this work may be reproduced or distributed without written permission of the copyright owner. The information contained in this report was gathered by Lee & Associates from sources believed to be reliable. Lee & Associates, however, makes no representation concerning the accuracy or completeness of such information and expressly disclaims any responsibility for any inaccuracy contained herein.



LOCAL EXPERTISE. INTERNATIONAL REACH. WORLD CLASS.

**Max P. Eddy**

Associate | DRE# 02163858

P: +1(562) 354-2538

E: meddy@leelalb.com

**Brandon Carrillo**

Principal | DRE# 01745362

P: +1(562) 354-2510

E: bcarrillo@leelalb.com

**Garrett Massaro, SIOR**

Principal | DRE# 01771471

P: +1(562) 354-2516

E: gmassaro@leelalb.com

Copyright © Lee & Associates. All rights reserved. No part of this work may be reproduced or distributed without written permission of the copyright owner. The information contained in this report was gathered by Lee & Associates from sources believed to be reliable. Lee & Associates, however, makes no representation concerning the accuracy or completeness of such information and expressly disclaims any responsibility for any inaccuracy contained herein.