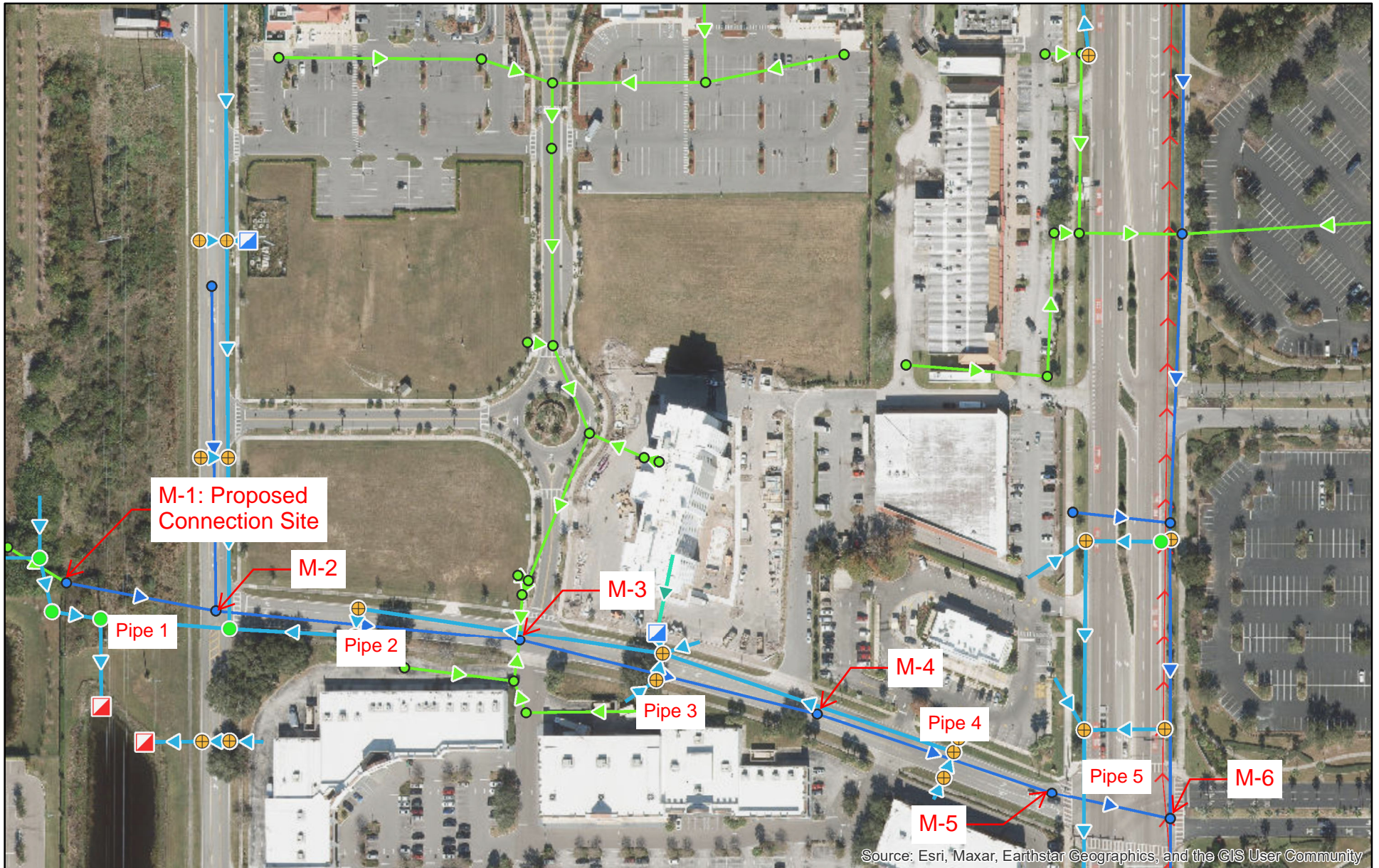
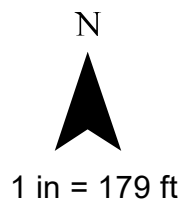
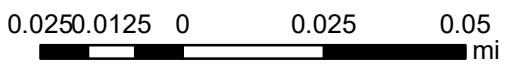


City of Orlando Utilities Data

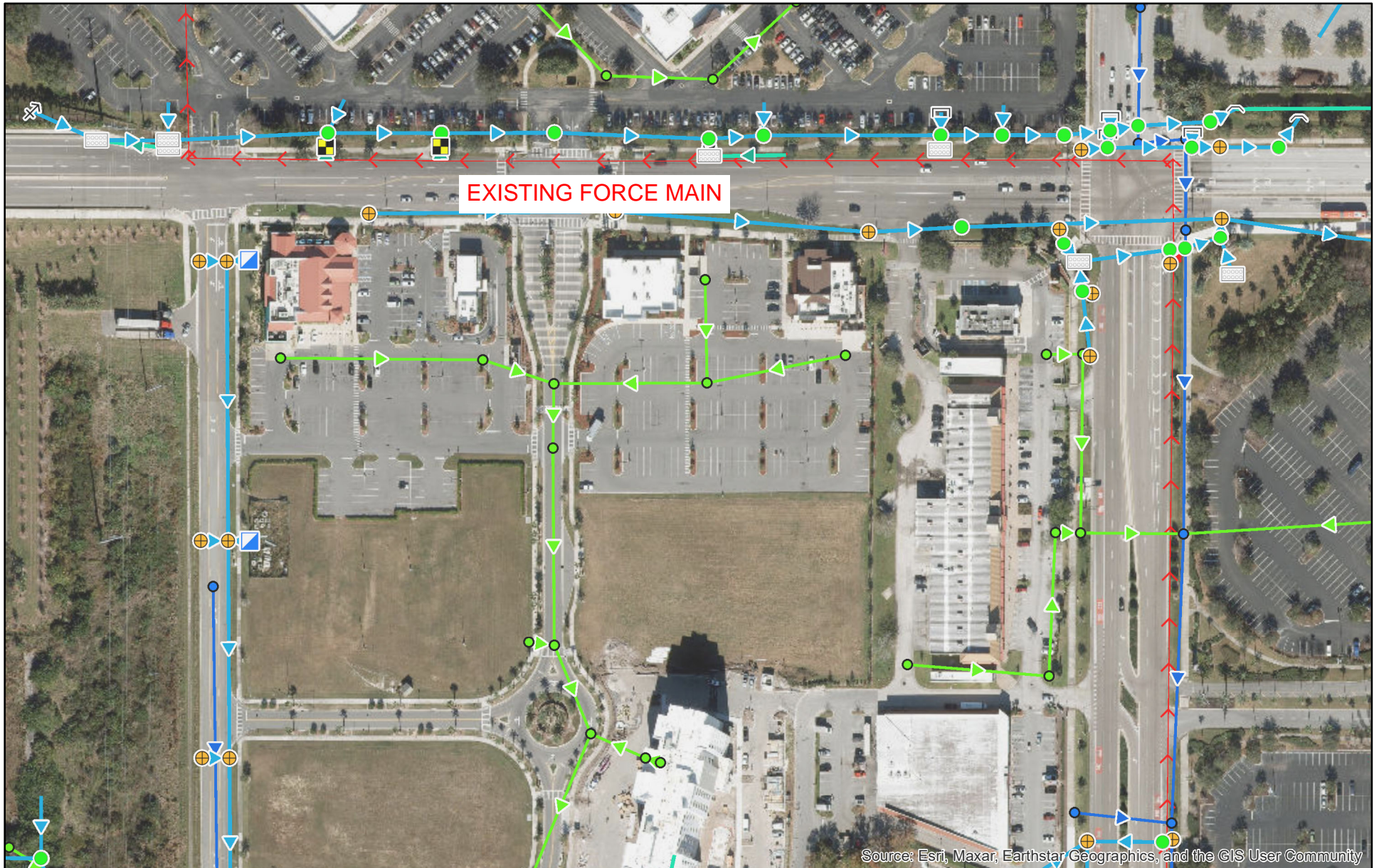


Printed: 12/23/2022, 8:36:43 AM



***IMPORTANT* Terms of Use/Disclaimer:**
Data contained in this document is controlled by the City of Orlando Disclaimer.
See printed disclaimer within this PDF, or navigate to:
<https://gis.orlando.gov/Disclaimer>
See a Map Legend within this PDF, or navigate to:
<https://gis.orlando.gov/MapLegend>

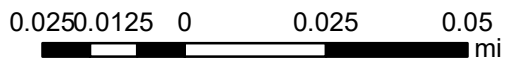
City of Orlando Utilities Data



Source: Esri, Maxar, Earthstar Geographics, and the GIS User Community



Printed: 12/23/2022, 8:40:05 AM



N



1 in = 179 ft

***IMPORTANT* Terms of Use/Disclaimer:**
Data contained in this document is controlled by the City of Orlando Disclaimer.

See printed disclaimer within this PDF, or navigate to:
<https://gis.orlando.gov/Disclaimer>

See a Map Legend within this PDF, or navigate to:
<https://gis.orlando.gov/MapLegend>