

BAYMONT BY WYNDHAM - SHAKOPEE

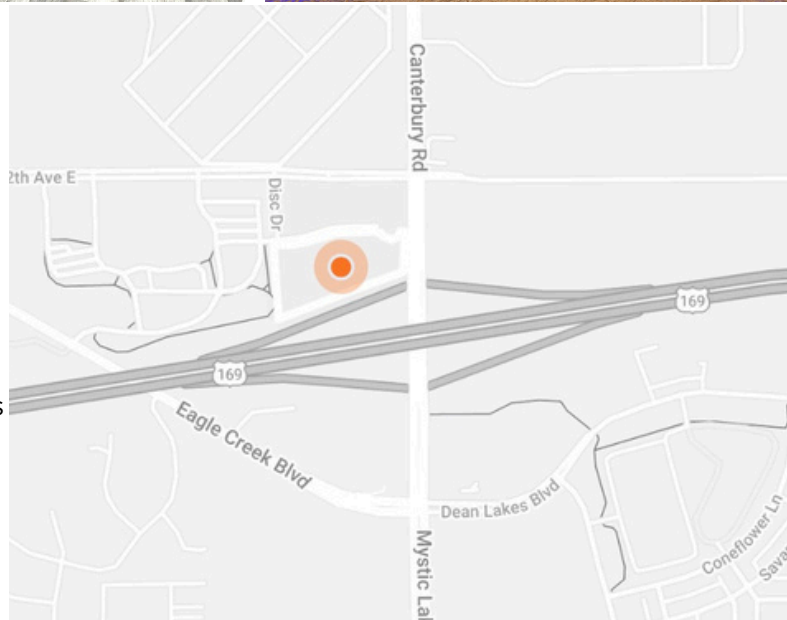
OFFICE SPACE FOR LEASE

1244 Canterbury Rd. S.
Shakopee, MN 55337



PROPERTY OVERVIEW

Here is a fantastic opportunity to lease office space at the Baymont by Wyndham Hotel. This Hotel offers a prime location at Highway 169 and Canterbury Rd in Shakopee. Included in your rent is a 24 hour front desk receptionist that can direct your clients to your suite along with receiving packages/mail. Tenants will also have access to the pool/hot tub and the fitness center. There is also a restaurant on location that offers a full food menu and full bar. Tenants will also have access to numerous conference and banquet rooms at substantially discounted rates. There are a variety of different size suites to choose from starting at 370sf up to 3104sf and various options in between. Extremely affordable full service gross leases at \$15-\$20sf.



CONTACTS

Jeremy Feldmann
406.314.3333
jeremyfeldmann@gmail.com
License #40702141

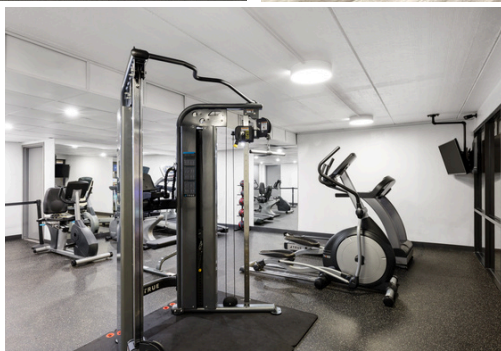
Paulo Mora
612.296.8494
paulo@yourrealestate.work
License #40713537

Jim Starr
612.247.5898
jjstarr41@gmail.com
License #20354644



1600 W. 82nd St., Suite 105, Bloomington, MN 55431

ADDITIONAL PHOTOS



1244 Canterbury Rd. S.
Shakopee, MN 55337

CONTACTS

Jeremy Feldmann
406.314.3333
jeremyfeldmann@gmail.com
License #40702141

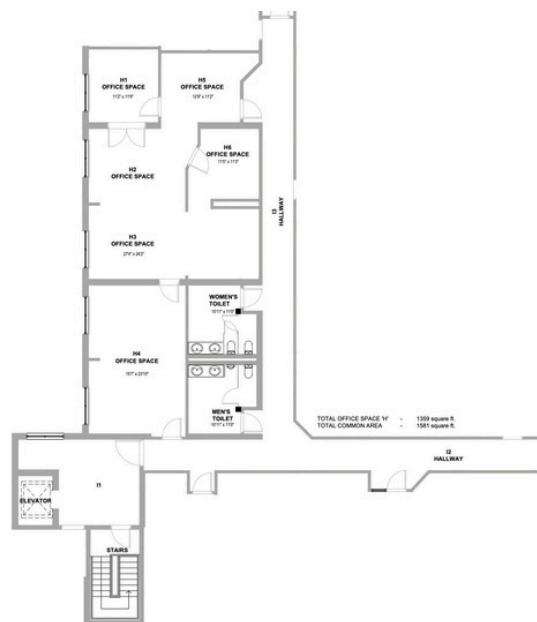
Paulo Mora
612.296.8494
paulo@yourrealestate.work
License #40713537

Jim Starr
612.247.5898
jjstarr41@gmail.com
License #20354644



1600 W. 82nd St., Suite 105, Bloomington, MN 55431

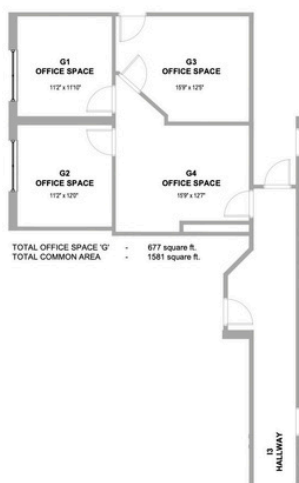
FLOOR PLANS



1 THIRD FLOOR 'OFFICE SUITE H' PLAN
SCALE: 3/8"=1'-0"



1 THIRD FLOOR 'OFFICE SUITE F' PLAN
SCALE: 3/8"=1'-0"



1 THIRD FLOOR 'OFFICE SUITE G' PLAN
SCALE: 3/8"=1'-0"



1 THIRD FLOOR 'OFFICE SUITE A' PLAN
SCALE: 3/8"=1'-0"

1244 Canterbury Rd. S.
Shakopee, MN 55337

CONTACTS

Jeremy Feldmann
406.314.3333
jeremyfeldmann@gmail.com
License #40702141

Paulo Mora
612.296.8494
paulo@yourrealestate.work
License #40713537

Jim Starr
612.247.5898
jjstarr41@gmail.com
License #20354644



1600 W. 82nd St., Suite 105, Bloomington, MN 55431