

**PROPERTY**  
Creek View Phase 2

**LOCATION**  
684 S Denton Tap Road  
Coppell, TX 75019

**FOR LEASE RARE COPPELL  
Medical/Retail/Office**



*Rare Coppell Medical/Retail/Office Space For Lease*

## PROPERTY HIGHLIGHTS

YOUR LOGO HERE

110  
GLACIER  
COMMERCIAL  
FOR LEASE  
CALL GLACIER  
COMMERCIAL  
214-637-4300  
glaciercommercial.com

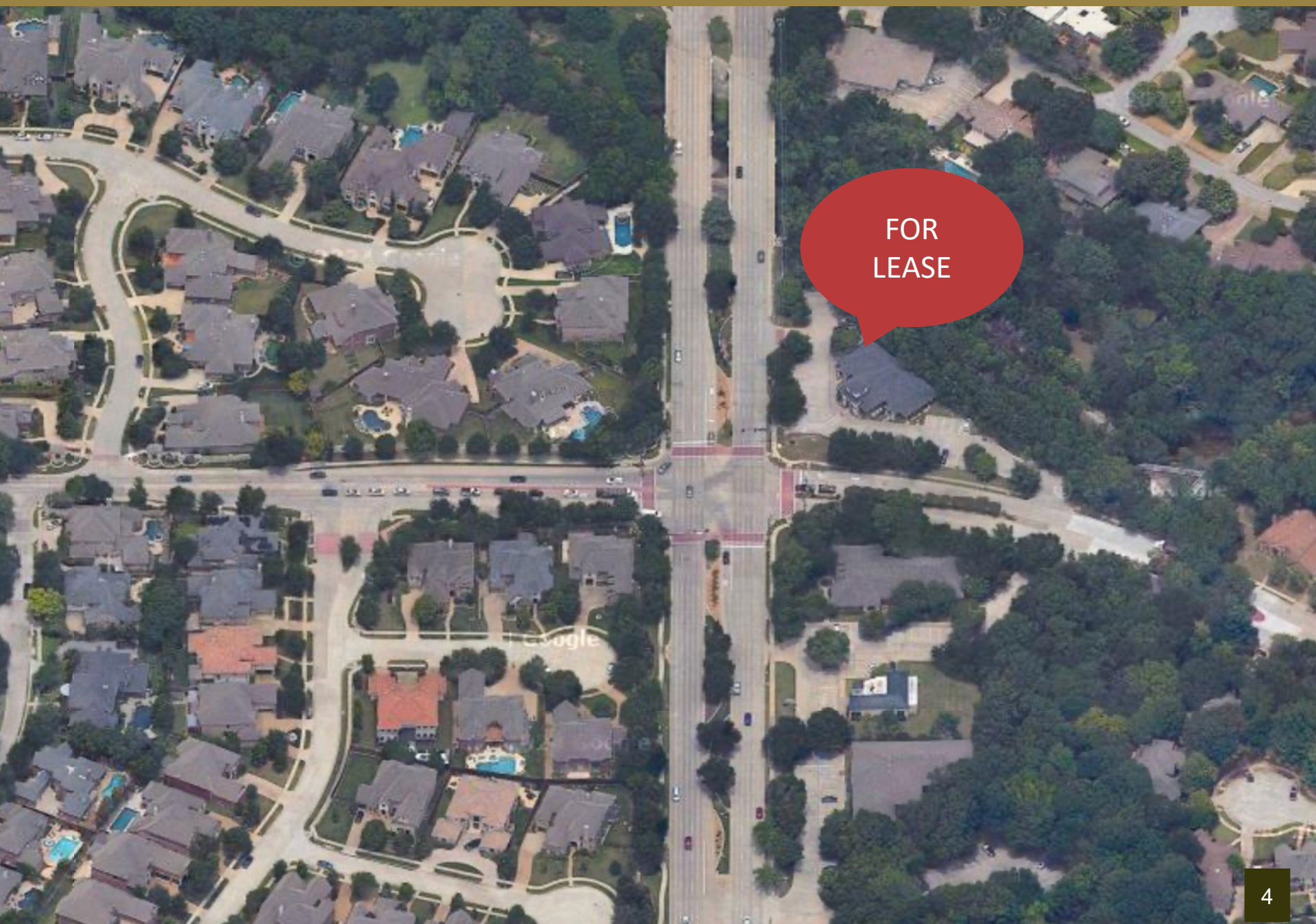
- Rare Medical Office Opportunity Fronting Denton Tap Road
- 1,715 SF Available For Lease
- Second Generation Space with Tenant Improvement Available
- Excellent Visibility on Coppell's Most Desired Road Location
- High Traffic Counts with Easy Ingress and Egress



FOR  
LEASE

Grapevine Creek

PROPERTY HIGHLIGHTS	
Address	684 S Denton Tap Road Coppell, TX 75019
Year Built	2014
Stories	1
For Lease	1,715 SF Available
Building Size	4,865 SF
Tenant Information	Creek View Phase 2 Business Park is home to a diverse tenant mix, including both medical and general office users
Use	Medical/Retail/Office
Excellent Demographics	Primed to serve Coppell's affluent, rapidly growing community with households within two miles boasting an average income of \$172,095/year
Parking	Plenty of Surface Parking Space
Great Location	With super convenient access to major arteries like 635, I35, Hwy 114, Hwy 121, President George Bush turnpike and proximity to the international DFW airport, this property allows excellent visibility and accessibility.



FOR  
LEASE

# PROPERTY OVERVIEW

**GRAPEVINE MILLS**

Durlington Marshalls **FIVE BELOW**  
 GUESS FACTORY ANN TAYLOR  
 ROSS THEATRES **AMC** **IMAX** macy's  
 GAP **Off 5th** **H&M** LOFT **Buckle**

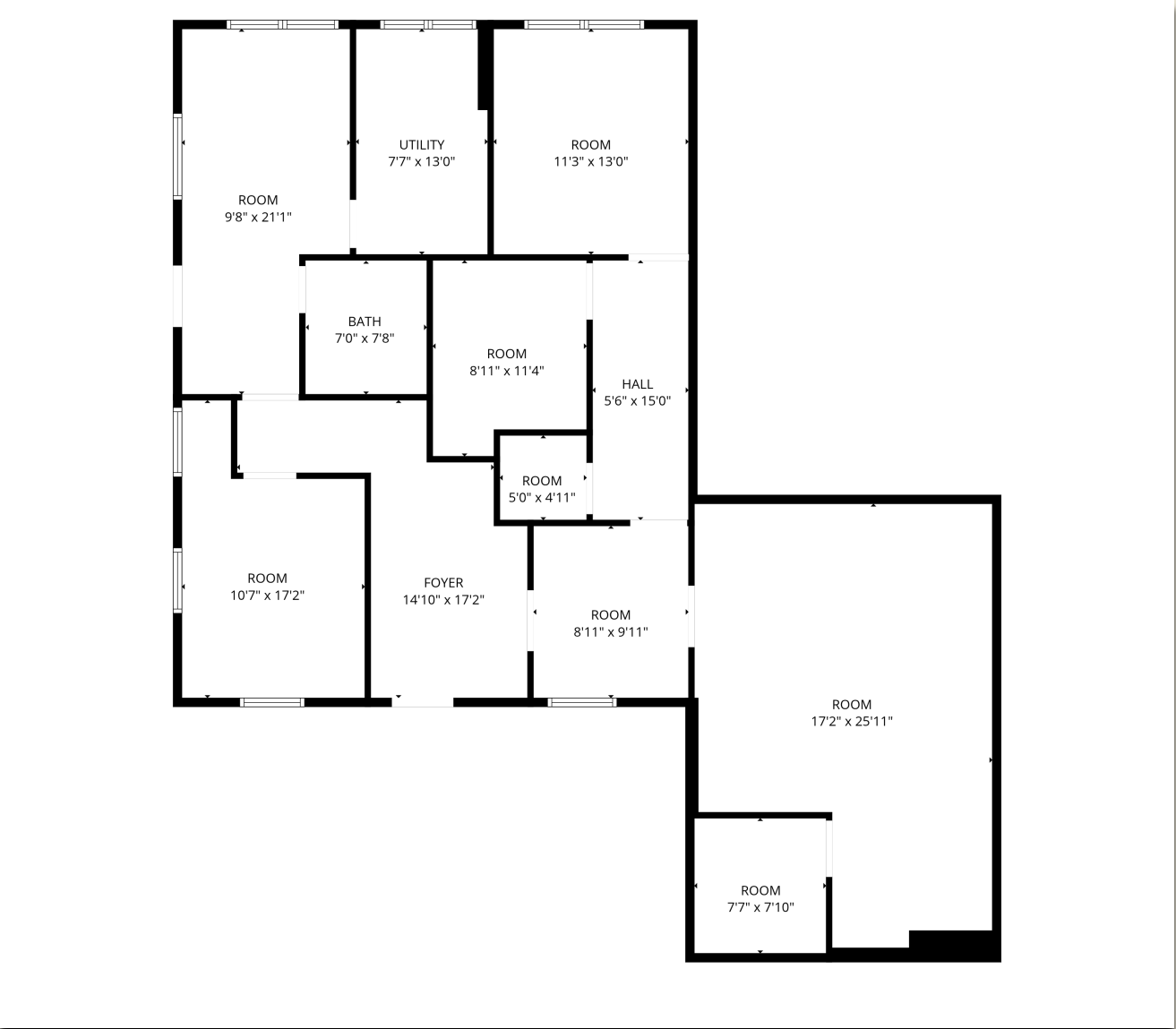


**MACARTHUR PARK**

PET SUPPLIES PLUS  
 MEN'S WEARHOUSE  
 Office DEPOT  
 OfficeMax  
 JCREW  
 VICTORIA'S SECRET  
 VERSONA  
 INDIA BAZAAR



SPACE  
PLANS





INTERIOR &  
EXTERIOR PHOTOS



**CONTACT INFORMATION**

**PAUL BLIGHT**

**Partner**

**C: 214.682.7192**

**O: 214.637.4300**

**pblight@glaciercommercial.com**

**STACEY YEARIAN**

**Vice President**

**C: 214.682.7192**

**O: 214.637.4300**

**yearian@glaciercommercial.com**

**Creek View Phase 2 | 684 S Denton Tap Road, Coppell, TX 75019**



[glaciercommercial.com](http://glaciercommercial.com)

©2026 Glacier Commercial Realty L.P.

All rights reserved. The information contained herein was obtained from sources believed to be reliable. It is subject to verification. The presentation of this property is submitted subject to errors, omissions, change of price or conditions, prior to sale or lease, or withdrawal without notice.