

# OFFICE CONDOMINIUM FOR SALE

3221 EASTLAKE AVENUE EAST  
SUITE 120  
SEATTLE, WA 98102

## *Property Highlights*

First Floor Office Condominium

1,293 RSF

Comes with a large garage level locked and secure storage room and one storage cage

Owner installed EV charger in the garage - which is under lock and key for owner exclusive use at owner designated parking stall

## *\$675,000*

SALE PRICE

**DAN STUTZ**

Executive Vice President  
206.398.2266  
dan.stutz@kidder.com

**DAN DAHL**

Executive Vice President  
206.650.6154  
dan.dahl@kidder.com

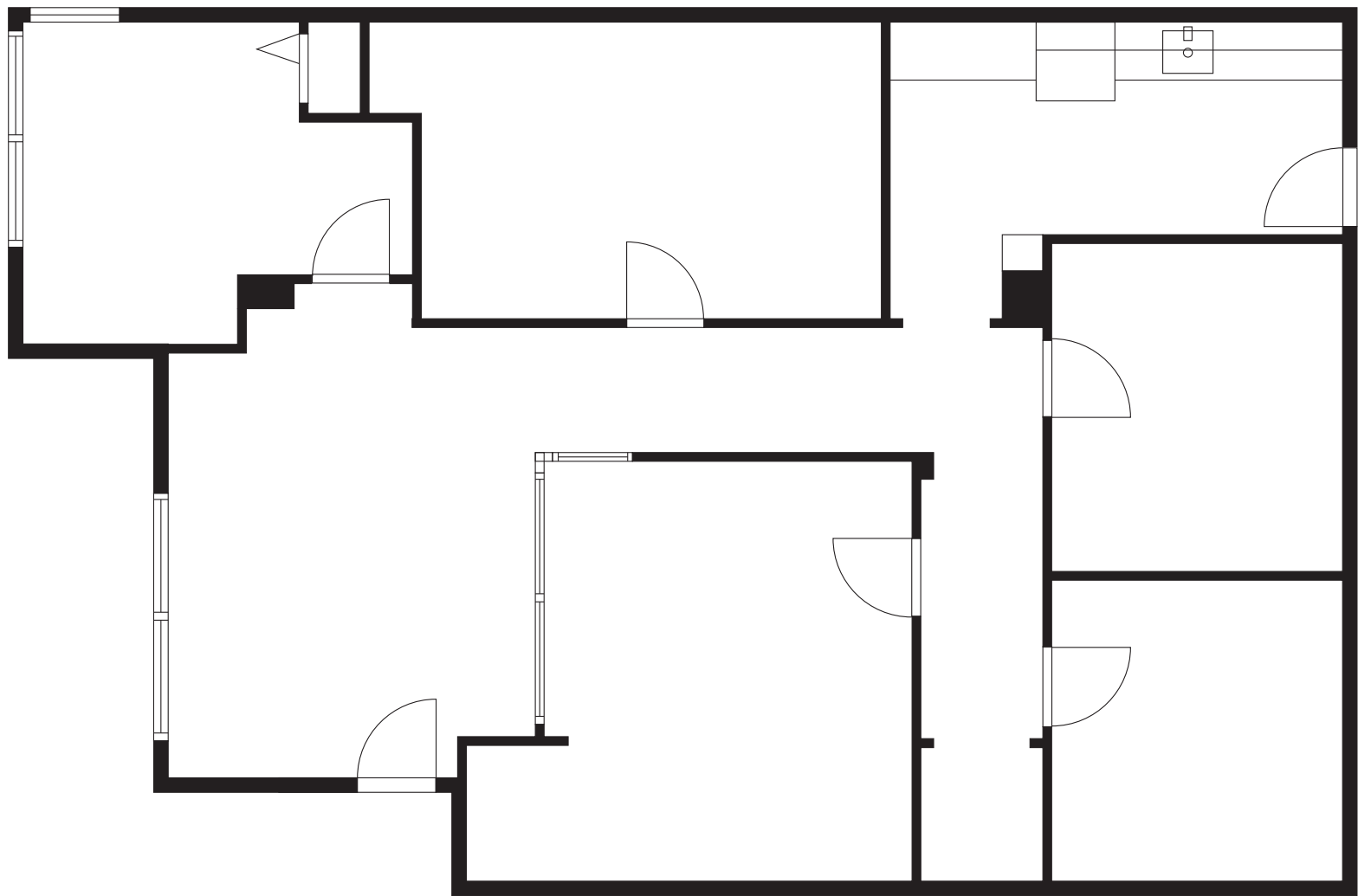
**DAVID GURRY**

Executive Vice President  
206.931.6474  
david.gurry@kidder.com

**KIDDER.COM**

This information supplied herein is from sources we deem reliable. It is provided without any representation, warranty, or guarantee, expressed or implied as to its accuracy. Prospective Buyer or Tenant should conduct an independent investigation and verification of all matters deemed to be material, including, but not limited to, statements of income and expenses. Consult your attorney, accountant, or other professional advisor. All Kidder Mathews designs are the sole property of Kidder Mathews. Branded materials and layouts are not authorized for use by any other firm or person.

FIRST FLOOR



1,293  
SQUARE FEET

KIDDER.COM

This information supplied herein is from sources we deem reliable. It is provided without any representation, warranty, or guarantee, expressed or implied as to its accuracy. Prospective Buyer or Tenant should conduct an independent investigation and verification of all matters deemed to be material, including, but not limited to, statements of income and expenses. Consult your attorney, accountant, or other professional advisor. All Kidder Mathews designs are the sole property of Kidder Mathews. Branded materials and layouts are not authorized for use by any other firm or person.





*Reserved Private  
Parking #30  
with EV Charger*



KIDDER.COM

This information supplied herein is from sources we deem reliable. It is provided without any representation, warranty, or guarantee, expressed or implied as to its accuracy. Prospective Buyer or Tenant should conduct an independent investigation and verification of all matters deemed to be material, including, but not limited to, statements of income and expenses. Consult your attorney, accountant, or other professional advisor. All Kidder Mathews designs are the sole property of Kidder Mathews. Branded materials and layouts are not authorized for use by any other firm or person.