

2907 TECH CENTER DRIVE SANTA ANA, CA 92705

HIGH-IMAGE INDUSTRIAL FLEX FACILITY

±6,825 SF

FOR LEASE



PROPERTY FEATURES

- ▶ High-Image ±6,825 SF industrial flex facility
- ▶ ±4,320 SF of professionally designed and fully furnished office
- ▶ 22' minimum warehouse clearance
- ▶ Fully sprinklered
- ▶ 800a, 277/480v power supply
- ▶ One (1) grade level loading door
- ▶ Twenty (20) parking stalls (3/1,000 SF)
- ▶ Freeway fronting identity with immediate freeway access
- ▶ Versatile zoning allows for a wide variety of commercial and industrial uses
- ▶ Abundance of nearby retail, dining and entertainment amenities



BRENDAN BRADY

brendan.brady@jll.com
+1 310 367 6918
RE License #02147986

ZACH NILES

zach.niles@jll.com
+1 949 278 6608
RE License #01311756

STEVE WAGNER

steve.wagner@jll.com
+1 949 885 2923
RE License #01314652

XAVIER NOLASCO

xavier.nolasco@jll.com
+1 949 296 3622
RE License #01856260

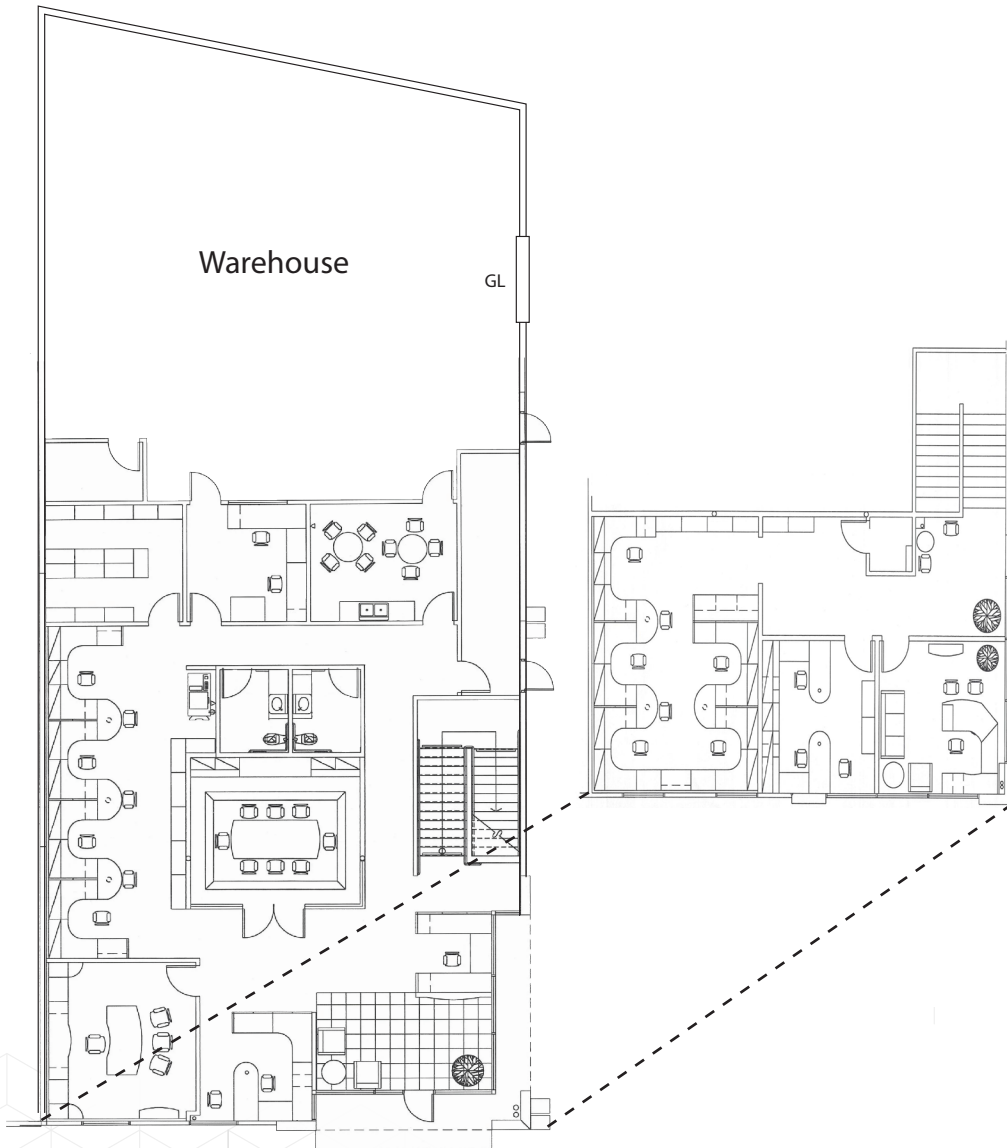
2907 TECH CENTER DRIVE SANTA ANA, CA 92705

HIGH-IMAGE INDUSTRIAL FLEX FACILITY

±6,825 SF

FOR LEASE

FLOOR PLAN



Although information has been obtained from sources deemed reliable, neither Owner nor JLL makes any guarantees, warranties or representations, express or implied, as to the completeness or accuracy as to the information contained herein. Any projections, opinions, assumptions or estimates used are for example only. There may be differences between projected and actual results, and those differences may be material. The Property may be withdrawn without notice. Neither Owner nor JLL accepts any liability for any loss or damage suffered by any party resulting from reliance on this information. If the recipient of this information has signed a confidentiality agreement regarding this matter, this information is subject to the terms of that agreement. ©2024. Jones Lang LaSalle IP, Inc. All rights reserved.



**BRENDAN
BRADY**

brendan.brady@jll.com
+1 310 367 6918
RE License #02147986

**ZACH
NILES**

zach.niles@jll.com
+1 949 278 6608
RE License #01311756

**STEVE
WAGNER**

steve.wagner@jll.com
+1 949 885 2923
RE License #01314652

**XAVIER
NOLASCO**

xavier.nolasco@jll.com
+1 949 296 3622
RE License #01856260