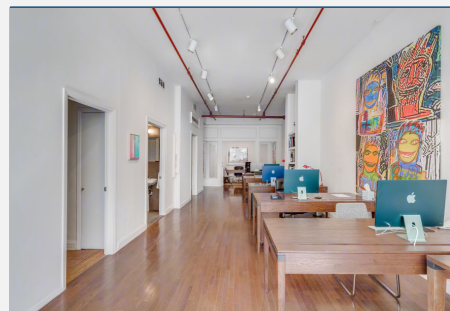


102 Farnsworth

Bordentown, New Jersey, 08505

Private Suites For Lease

250 – 3,000 SF



102 Farnsworth Avenue is a vibrant retail & office building with abundant curbside appeal located in downtown Bordentown. The property was built in 1930 and sits directly across the street from the historic home of Francis Hopkinson, the designer of the United States Flag and a signer of the Declaration of Independence. The property benefits from low turnover and hosts a variety of users ranging from a micro brewery to a title insurance company. Currently available space is perfect for a business seeking a prime downtown location or any organization that does work in Central Jersey. Additional highlights include abundant window light and two blocks distance from the River Line Train Station. Monthly rents for private office suites start at \$600 (plus utilities) and easy access to major roadways such as 195, 295, 206, 130, US Route 1 and NJ Turnpike make this building ideal for small businesses and private practices. Ownership will combine/divide available spaces to meet the size requirements of new tenants.

CONTACT

Lauri Names
609-921-7655

lauri@princetonrealtymg.com

