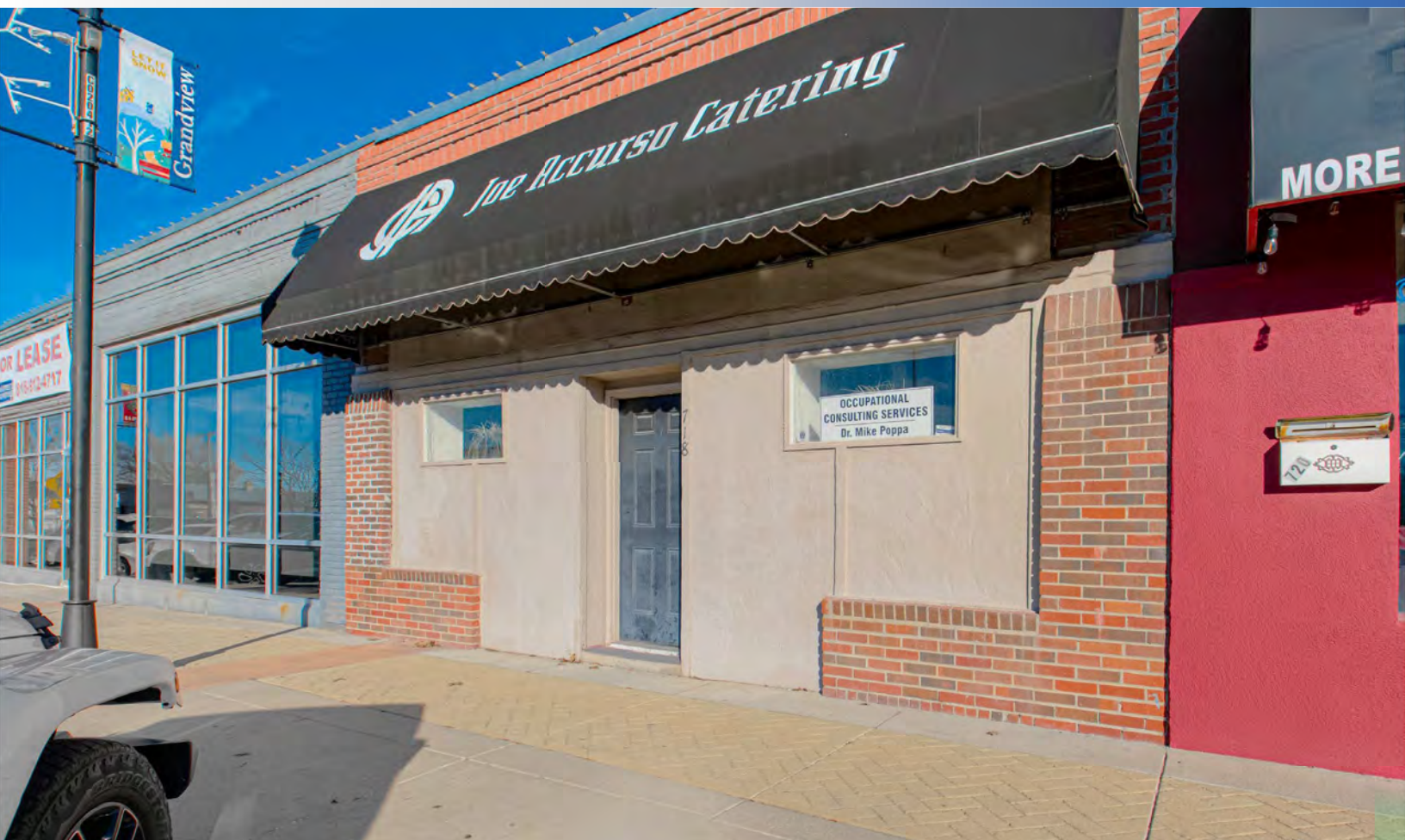




FULL SERVICE CATERING LOCATION

718 Main Street, Grandview, Missouri



SALE PRICE: \$650,000 | LEASE RATE: \$20/SF NNN

DEMOGRAPHICS

	1 mile	3 miles	5 miles
Estimated Population	7,084	42,938	106,287
Avg. Household Income	\$64,401	\$75,884	\$105,888

- 2,500 SF full service catering location
- Walk-in cooler/freezer
- Hood
- Fully equipped kitchen
- Office and tasting rooms
- Garage door for easy loading
- Great access to I-49/71 Highway
- [Click Here View Virtual Tour](#)



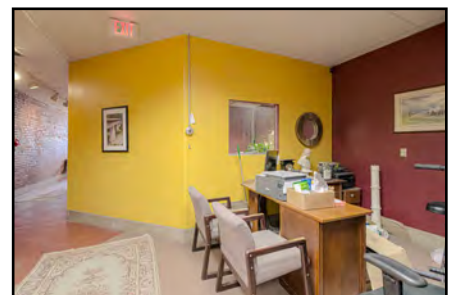
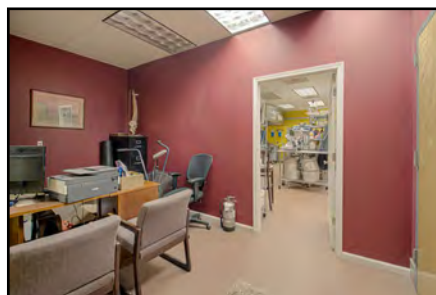
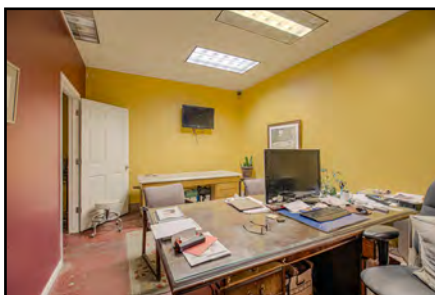
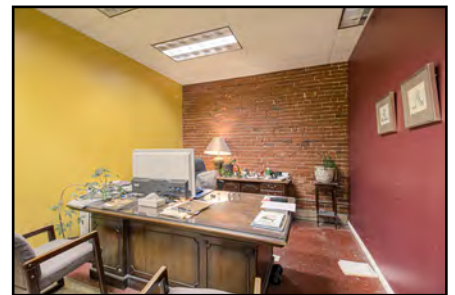
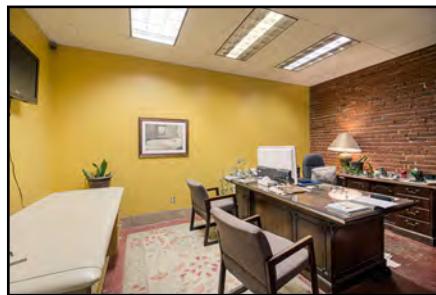
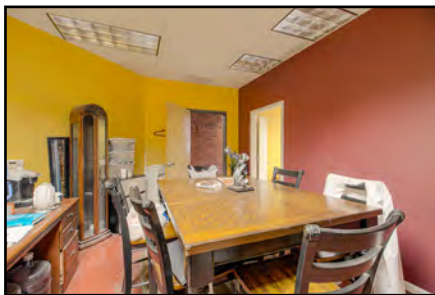
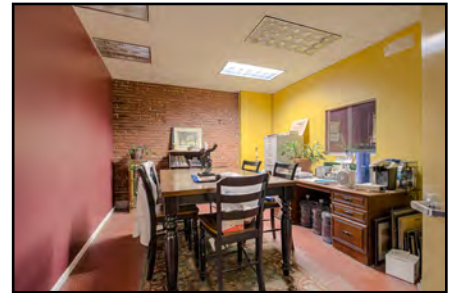
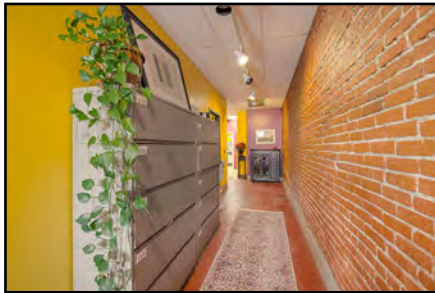
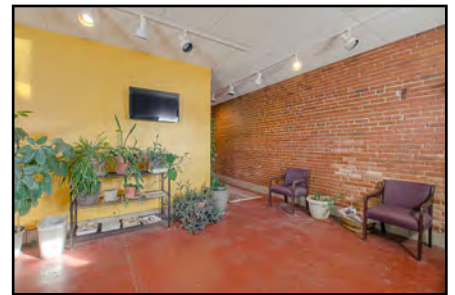
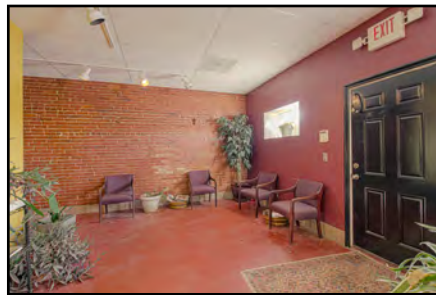
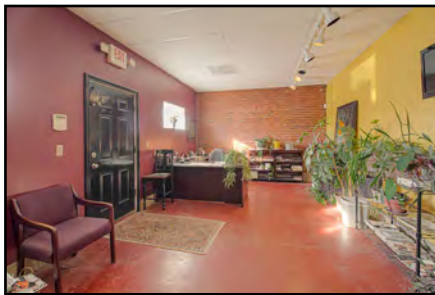
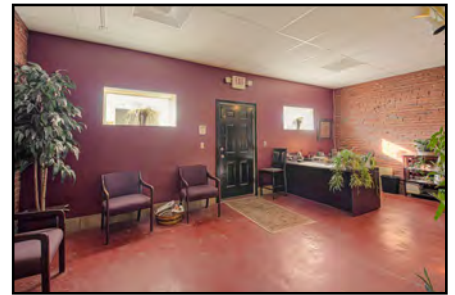
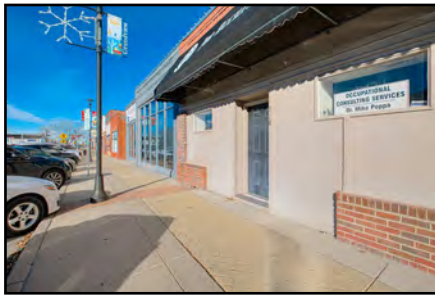
CLICK HERE TO VIEW MORE
LISTING INFORMATION

For More Information Contact:

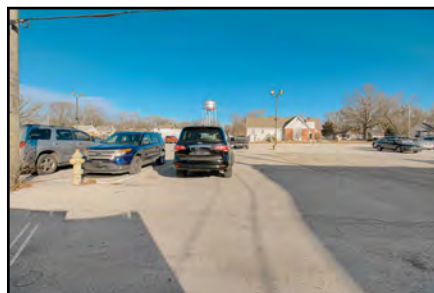
MARSHAL BLOUNT | 816.806.9445 | mblount@blockandco.com

Exclusive Agent

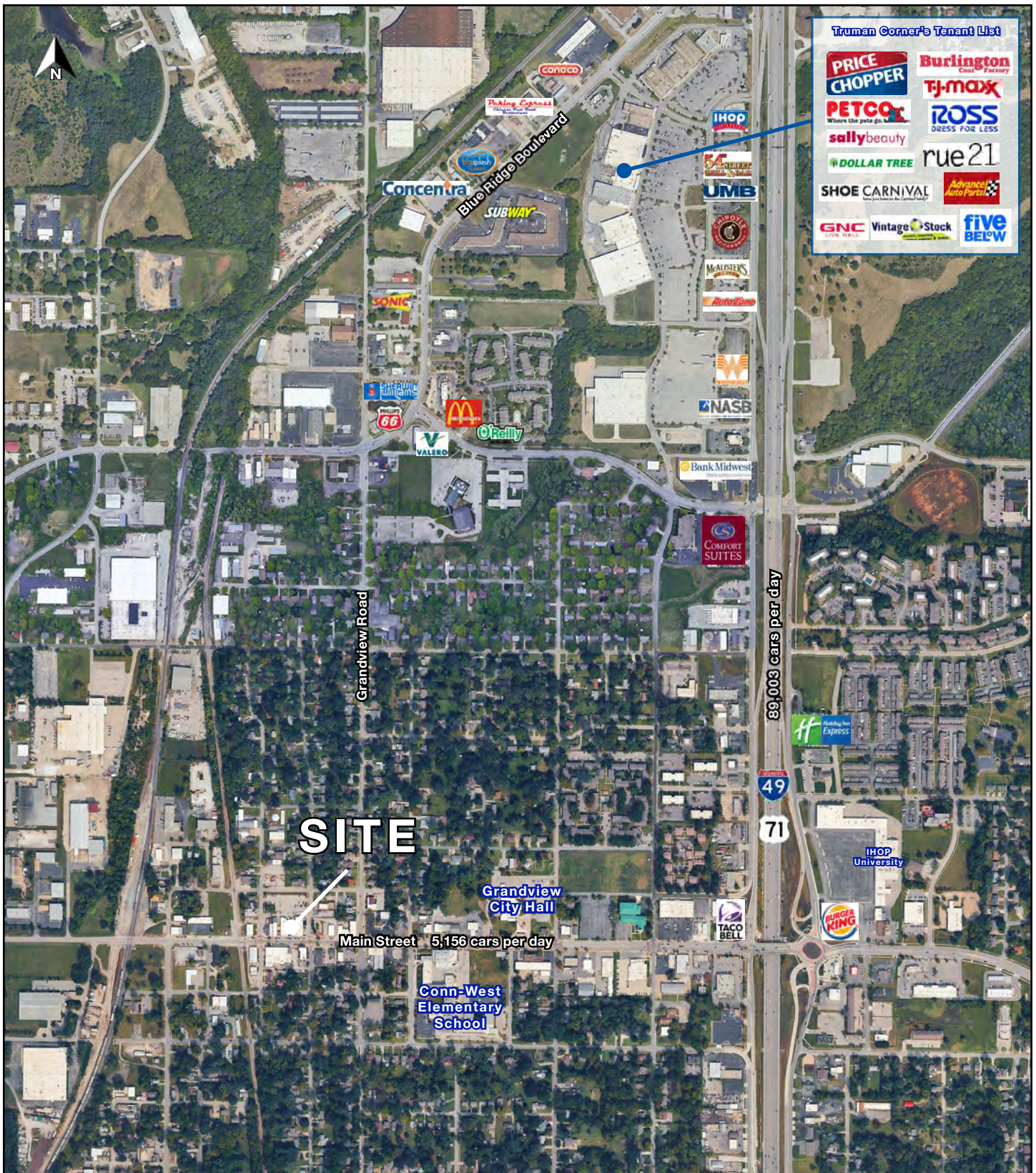
PHOTOS



PHOTOS

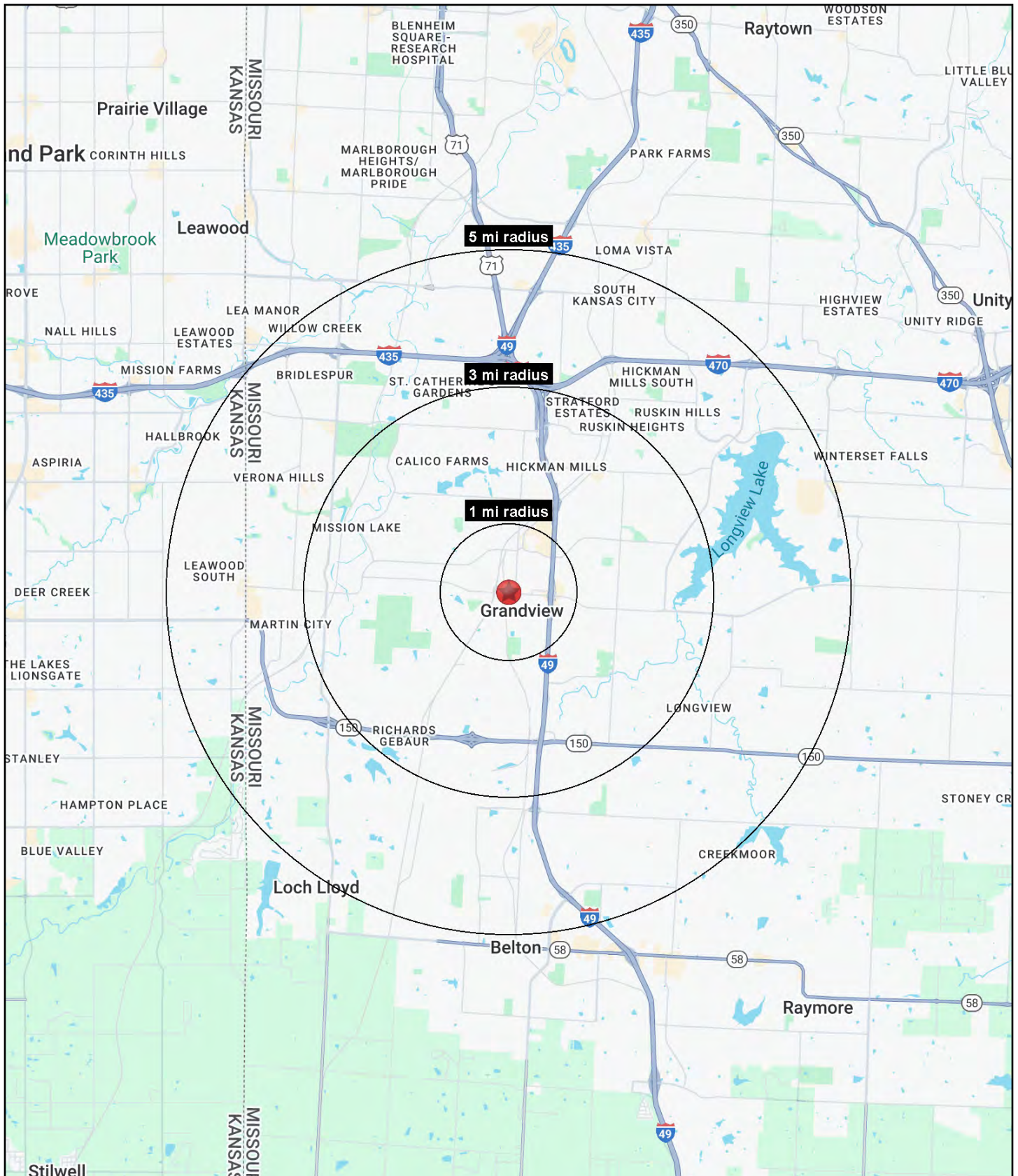


AERIAL





All information furnished regarding property for sale or lease is from sources deemed reliable, but no warranty or representation is made as to the accuracy thereof and the same is subject to errors, omissions, changes of prices, rental or other conditions, prior sale or lease or withdrawal without notice.





FULL SERVICE CATERING LOCATION

718 Main Street, Grandview, Missouri

718 Main Street Grandview, MO 64030	1 mi radius	3 mi radius	5 mi radius
Population			
2025 Estimated Population	7,084	42,938	106,287
2030 Projected Population	7,076	42,426	106,699
2020 Census Population	6,966	44,380	107,793
2010 Census Population	6,711	42,467	102,949
Projected Annual Growth 2025 to 2030	-	-0.2%	-
Historical Annual Growth 2010 to 2025	0.4%	-	0.2%
2025 Median Age	35.9	35.2	37.5
Households			
2025 Estimated Households	3,054	17,601	44,140
2030 Projected Households	3,075	17,561	44,750
2020 Census Households	3,000	17,815	43,710
2010 Census Households	2,829	16,735	40,907
Projected Annual Growth 2025 to 2030	0.1%	-	0.3%
Historical Annual Growth 2010 to 2025	0.5%	0.3%	0.5%
Race and Ethnicity			
2025 Estimated White	50.1%	46.8%	57.3%
2025 Estimated Black or African American	30.3%	38.5%	29.7%
2025 Estimated Asian or Pacific Islander	1.9%	2.1%	2.7%
2025 Estimated American Indian or Native Alaskan	0.5%	0.5%	0.4%
2025 Estimated Other Races	17.3%	12.1%	9.9%
2025 Estimated Hispanic	16.9%	11.8%	9.5%
Income			
2025 Estimated Average Household Income	\$64,401	\$75,884	\$105,888
2025 Estimated Median Household Income	\$50,716	\$58,886	\$80,104
2025 Estimated Per Capita Income	\$27,797	\$31,194	\$44,058
Education (Age 25+)			
2025 Estimated Elementary (Grade Level 0 to 8)	5.1%	3.6%	3.0%
2025 Estimated Some High School (Grade Level 9 to 11)	6.7%	5.8%	4.2%
2025 Estimated High School Graduate	33.5%	29.2%	24.6%
2025 Estimated Some College	25.2%	24.7%	23.9%
2025 Estimated Associates Degree Only	9.2%	8.6%	7.4%
2025 Estimated Bachelors Degree Only	14.8%	18.6%	23.5%
2025 Estimated Graduate Degree	5.6%	9.4%	13.4%
Business			
2025 Estimated Total Businesses	525	1,568	3,853
2025 Estimated Total Employees	5,586	18,440	46,468
2025 Estimated Employee Population per Business	10.6	11.8	12.1
2025 Estimated Residential Population per Business	13.5	27.4	27.6

©2026, Sites USA, Chandler, Arizona, 480-491-1112 Demographic Source: Applied Geographic Solutions 11/2025, TIGER Geography - RS1