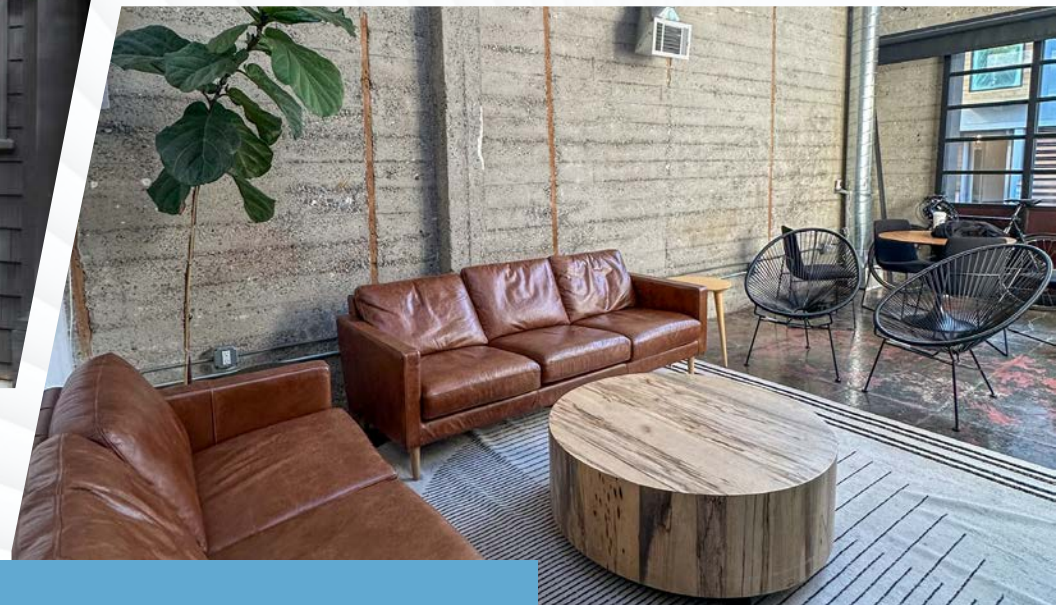


448 LINDEN

FULL BUILDING HAYES VALLEY SUBLEASE

- ±3,298 SF
- Through: 7/31/2027
- AVAILABLE NOW

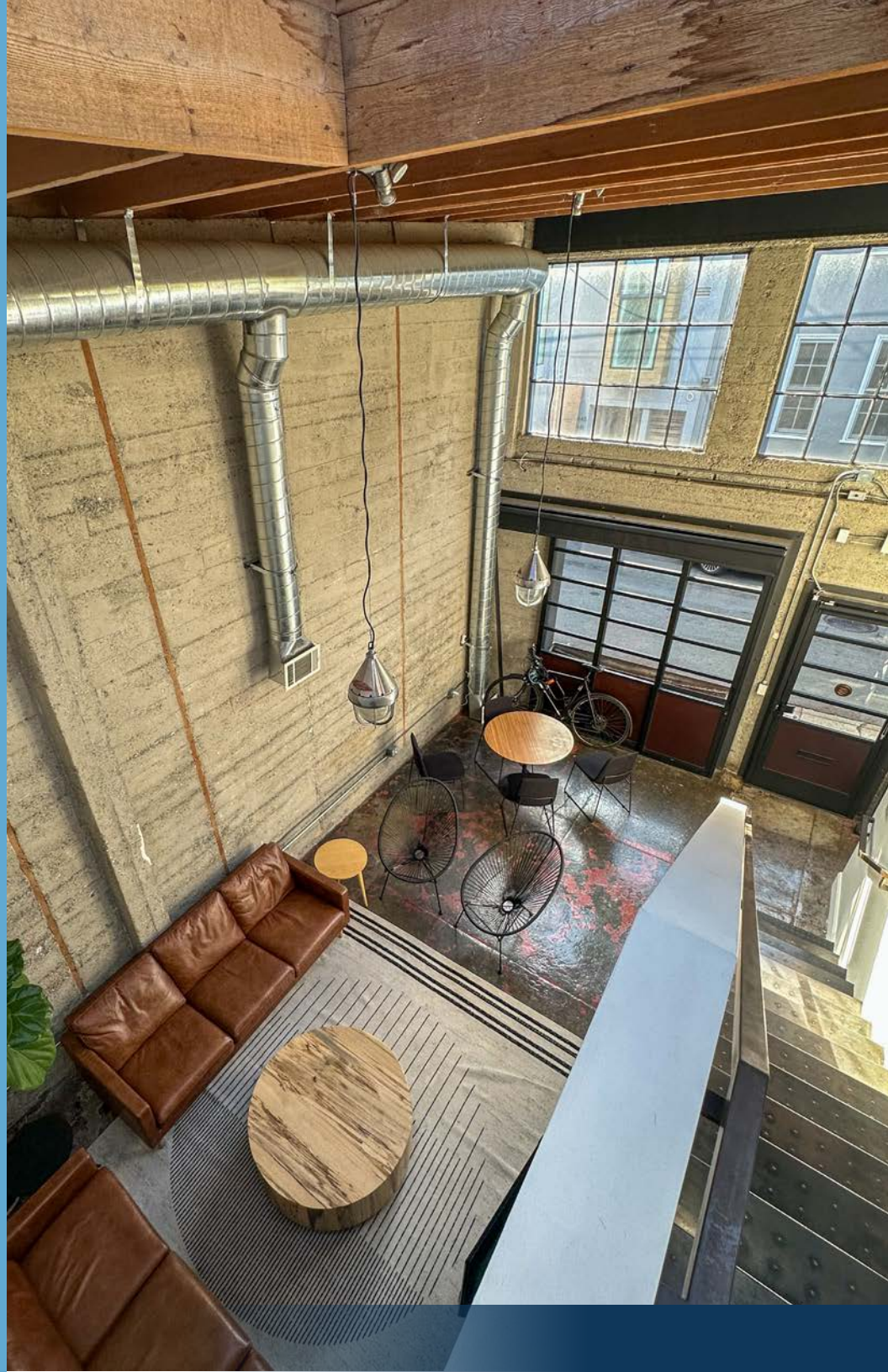


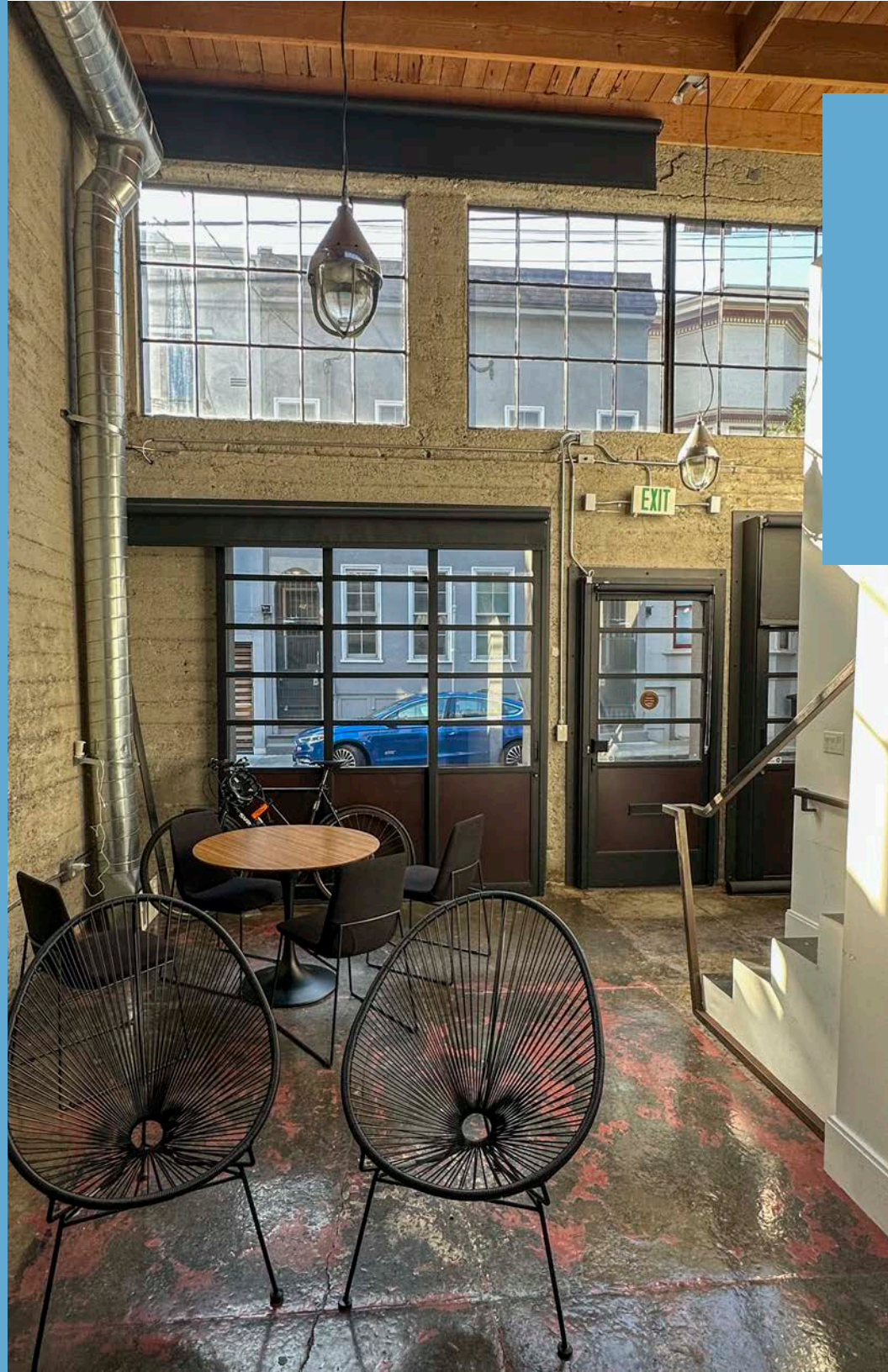
NEWMARK

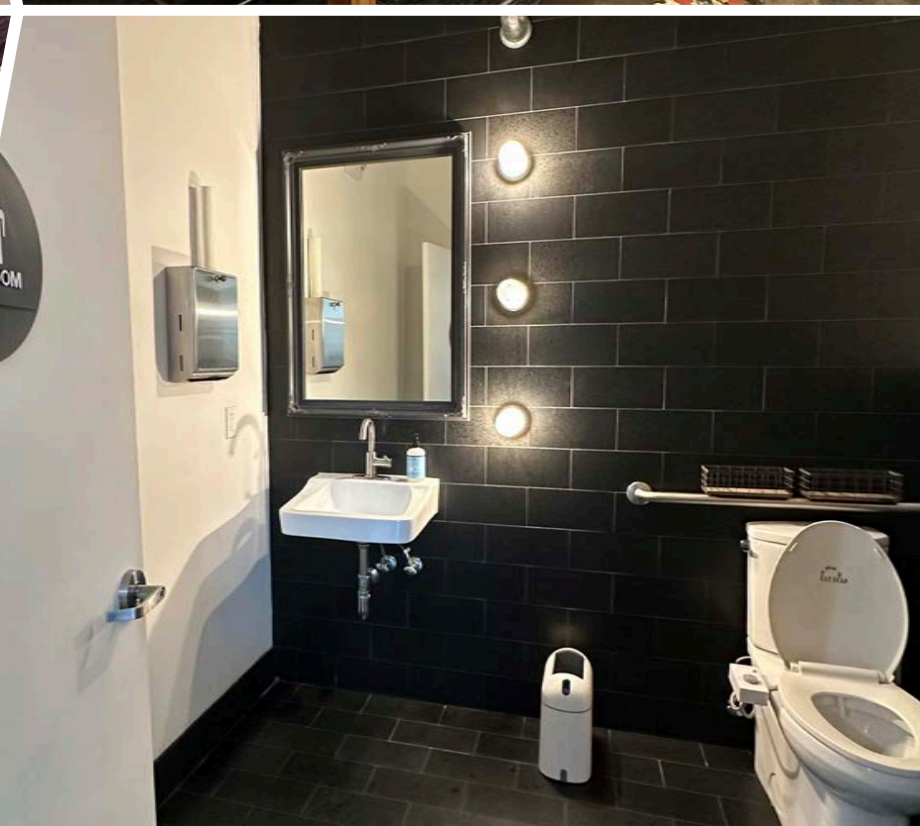
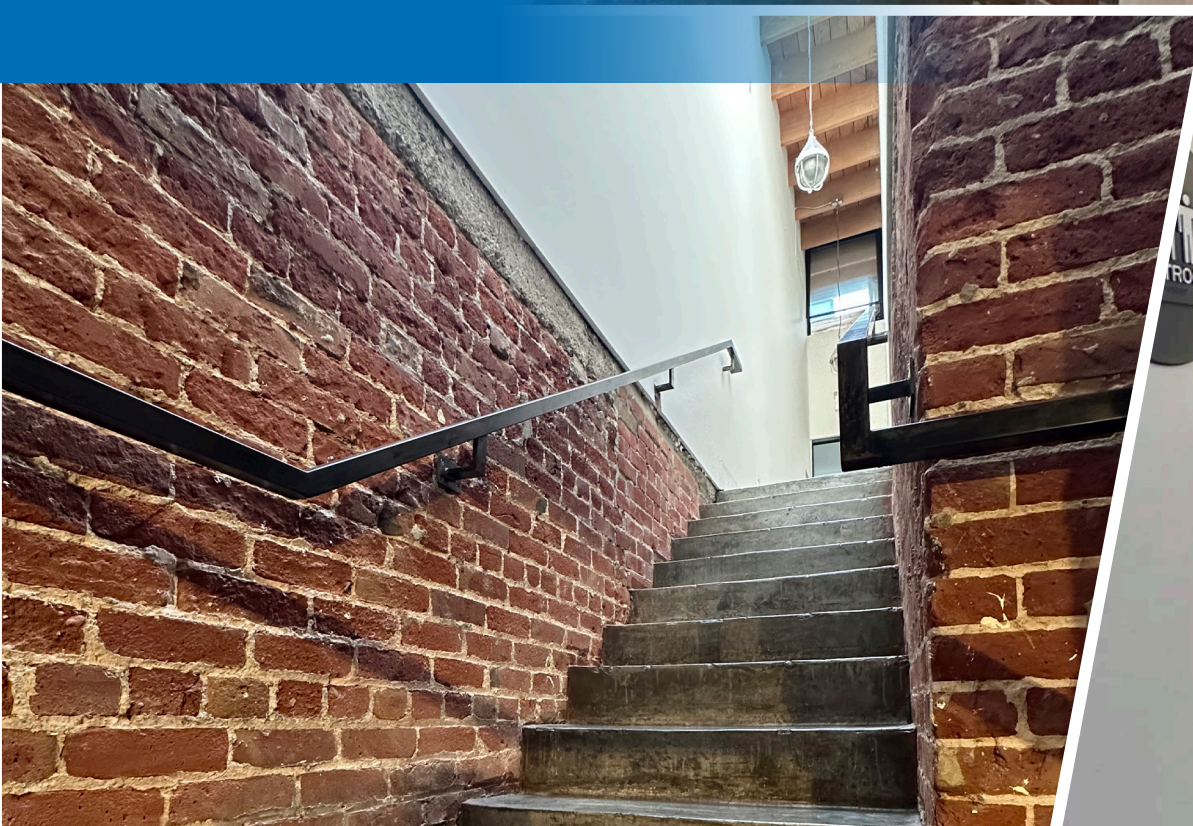


BUILDING HIGHLIGHTS

- Hayes Valley Location
- Plug & Play
- Sliding Glass Exterior Doors
- Polished Concrete Floors
- Large Conference Room
- Kitchenette with Built-In Espresso Maker
- ADA Restroom
- Great Natural Light









ONE SANSOME STREET, FLOOR 41, SAN FRANCISCO, CA 94104

The distributor of this communication is performing acts for which a real estate license is required. The information contained herein has been obtained from sources deemed reliable but has not been verified and no guarantee, warranty or representation, either express or implied, is made with respect to such information. Terms of sale or lease and availability are subject to change or withdrawal without notice. 9508518400 || 10/25

ALEX LASSAR

Senior Managing Director
t 312-927-5281
alex.lassar@nrmk.com
CA RE LIC #01966537

TYLER PARATTE

Director
t 650-288-8533
tyler.paratte@nrmk.com
CA RE LIC #02048770

NEWMARK