

For Lease

CBRE

QSR - Drive Thru

Former Arby's-Freestanding Restaurant

5947 Creek Centre | Baton Rouge, LA 70820



Retail

2,200

Total SF Available

13,554

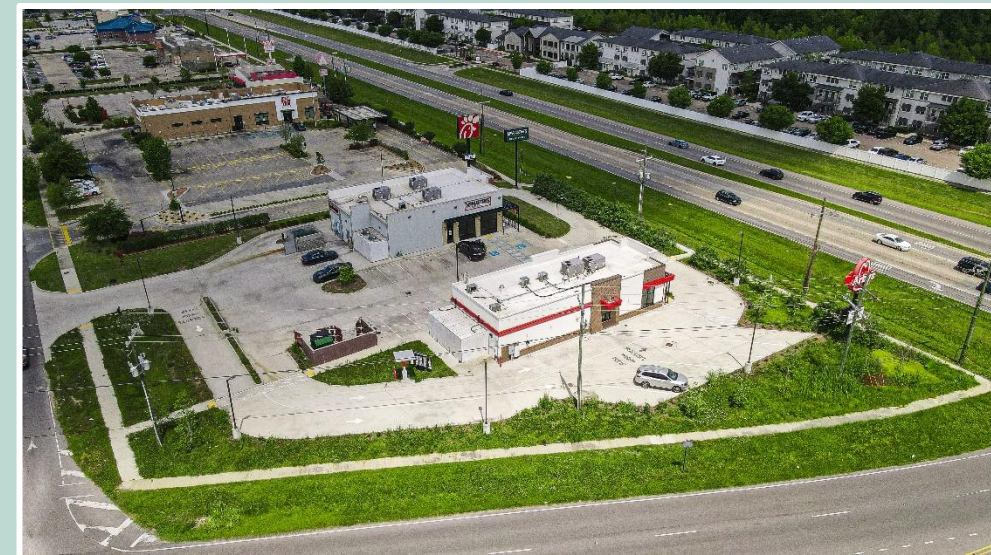
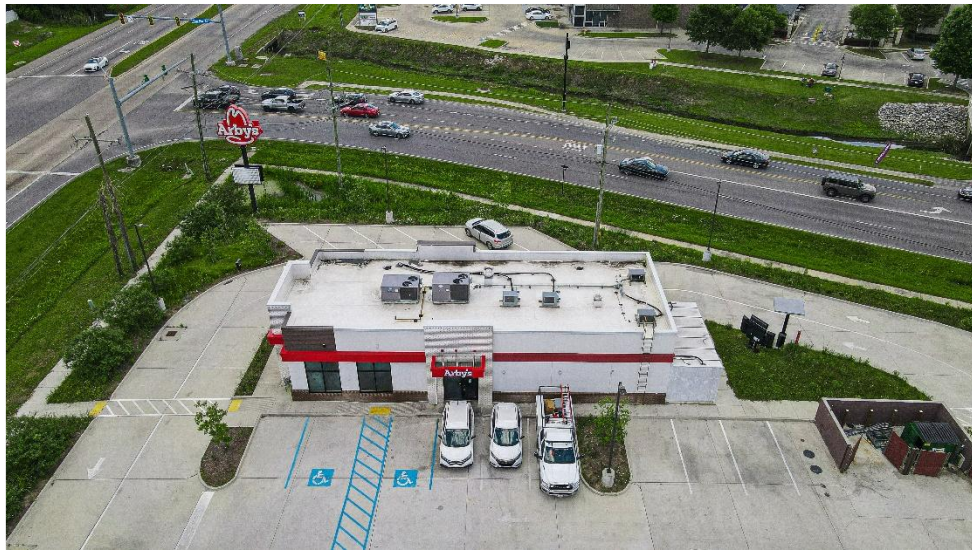
Traffic Count (Burbank)

Property Overview

- + Former Arby's QSR with Drive Thru location available (2,200 SF)
- + Outparcel to Arlington Marketplace- 55,000 SF Retail Center
- + Area retailers include McAlister's, Chick-fil-A, Atomic Burger, WhatABurger, McDonald's, 7 Brew, Chase Bank, Rouses Supermarket Jason's Deli, Chipotle and more
- + Approx. 2.3 Miles from Louisiana State University with over 1,700 Student Housing Units in the immediate vicinity

Retail For Lease – Aerial Overview
5947 Creek Centre | Baton Rouge, LA 70820

For Lease

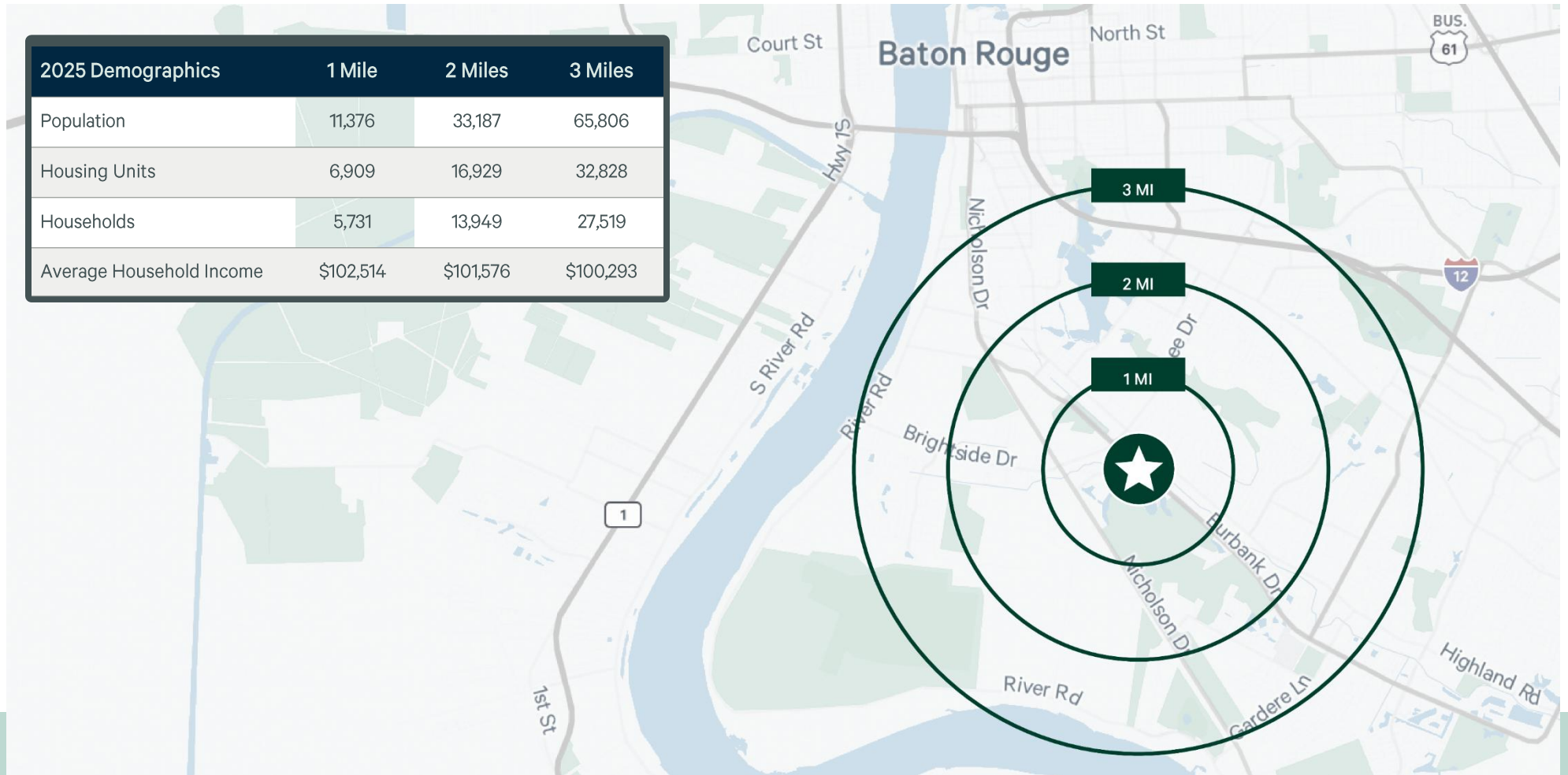


Retail For Lease

5947 Creek Centre | Baton Rouge, LA 70820

For Lease

2025 Demographics	1 Mile	2 Miles	3 Miles
Population	11,376	33,187	65,806
Housing Units	6,909	16,929	32,828
Households	5,731	13,949	27,519
Average Household Income	\$102,514	\$101,576	\$100,293



Contact Us

Ty Gose, SIOR, CCIM
Senior Vice President
+1 225 247 3770
ty.gose@cbre.com

Jake Loach, CCIM
Associate
+1 256 724 2764
Jake.loach@cbre.com

© 2026 CBRE, Inc. All rights reserved. This information has been obtained from sources believed reliable but has not been verified for accuracy or completeness. CBRE, Inc. makes no guarantee, representation or warranty and accepts no responsibility or liability as to the accuracy, completeness, or reliability of the information contained herein. You should conduct a careful, independent investigation of the property and verify all information. Any reliance on this information is solely at your own risk. CBRE and the CBRE logo are service marks of CBRE, Inc. All other marks displayed on this document are the property of their respective owners, and the use of such marks does not imply any affiliation with or endorsement of CBRE. Photos herein are the property of their respective owners. Use of these images without the express written consent of the owner is prohibited.

CBRE