

# FOR LEASE

## 32403 & 32307 Tamina Rd. | Magnolia, TX



### Location Description

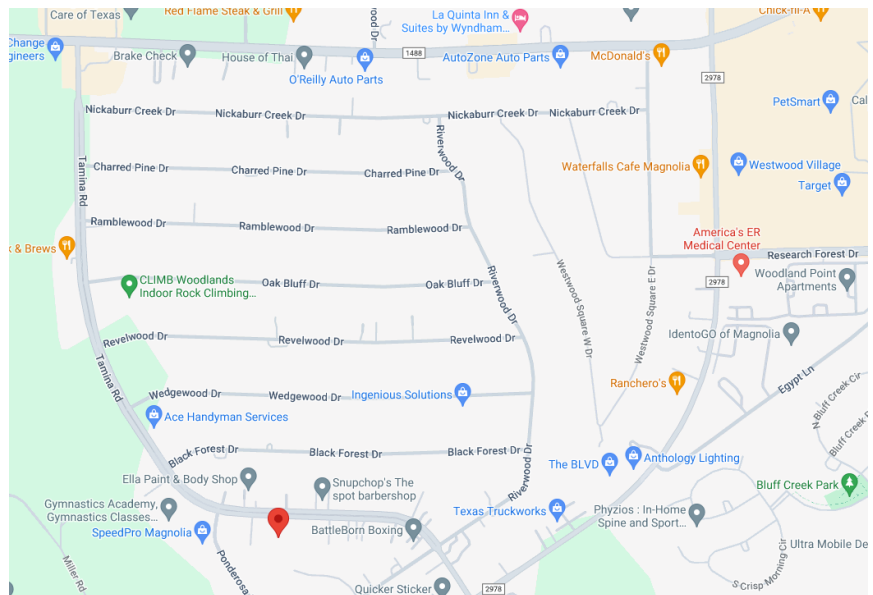
Easy access to FM 2978 & FM 1488. Servicing the Woodlands sub market and surrounding areas.

### Building Features

- 12' x 14' Overhead Doors
- 24/7 Tenant Access

### Available Space

- Office and Warehouse Spaces
- Immediate Occupancy
- Flexible, Simple Lease Terms
- New Business Friendly



**Lexie Tanner**

Office: 972.771.7577

Cell: 469.651.9312

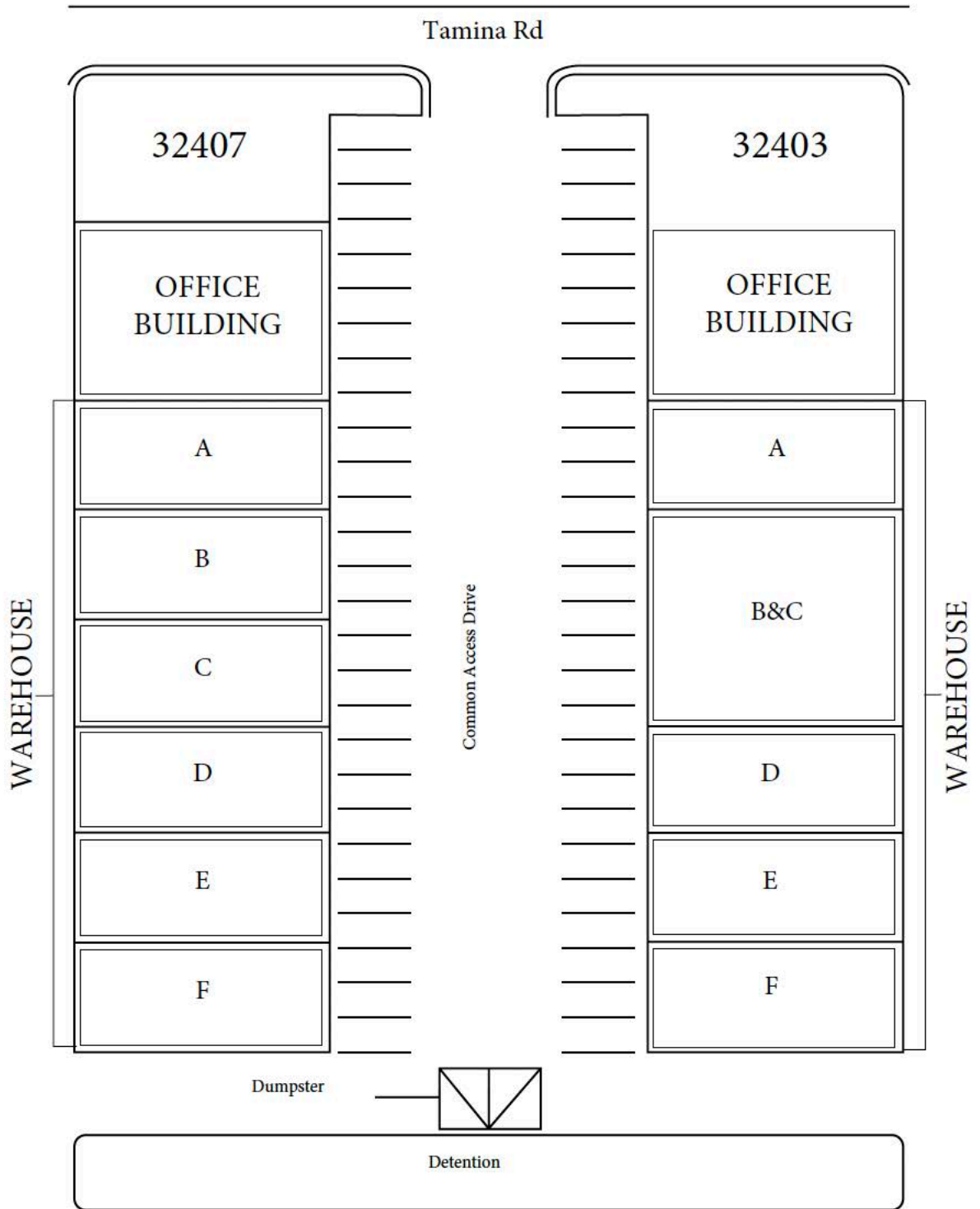
Leads@skyrei.com



106 E. Rusk, Suite 200  
Rockwall, Texas 75087  
www.skyrei.com

# 32403 & 3207 Tamina Rd. | Magnolia, TX

## SITE PLAN

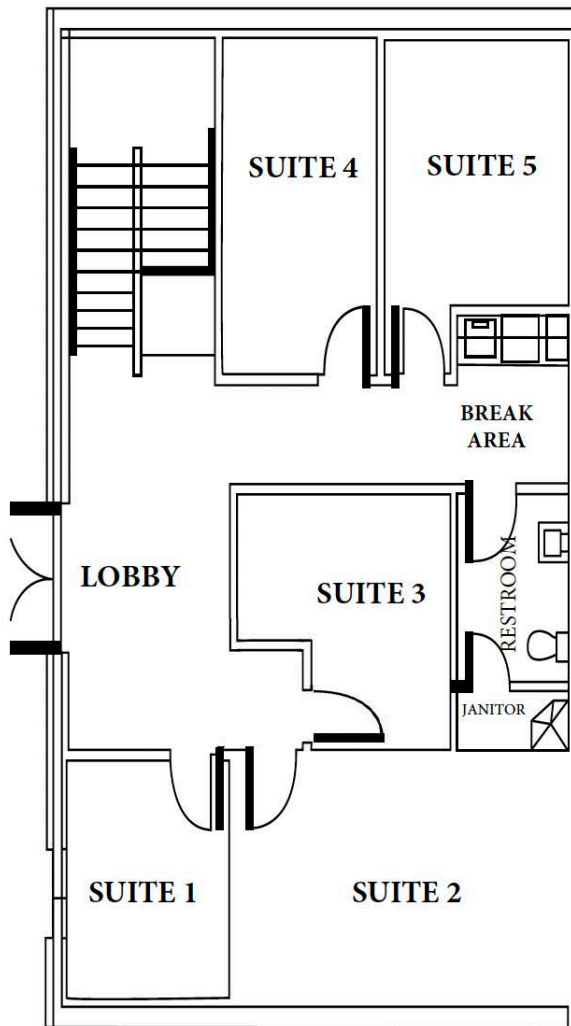


# 32403 & 3207 Tamina Rd. | Magnolia, TX

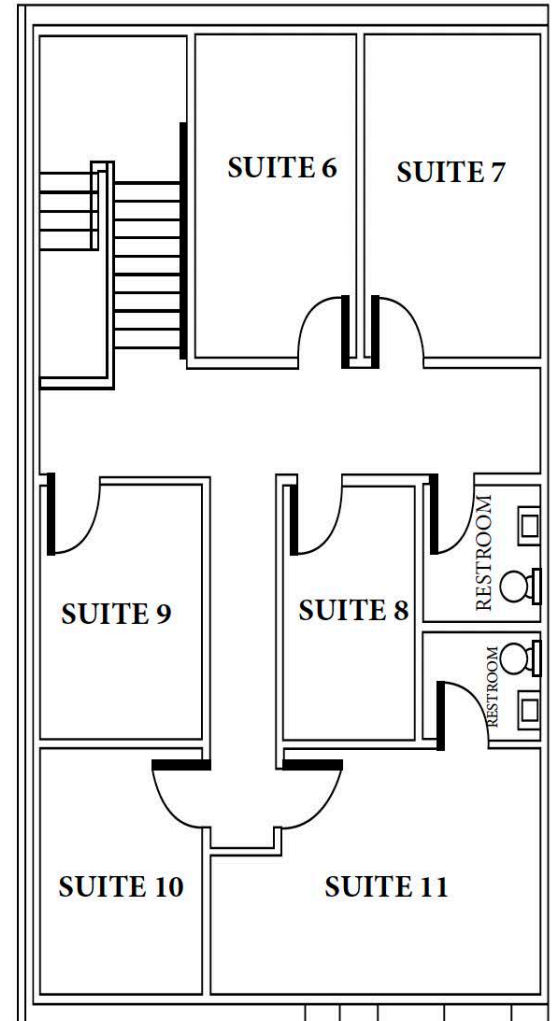
## OFFICE SUITES

TWO BUILDINGS ON SITE

### 1ST FLOOR



### 2ND FLOOR



**Lexie Tanner**

Office: 972.771.7577

Cell: 469.651.9312

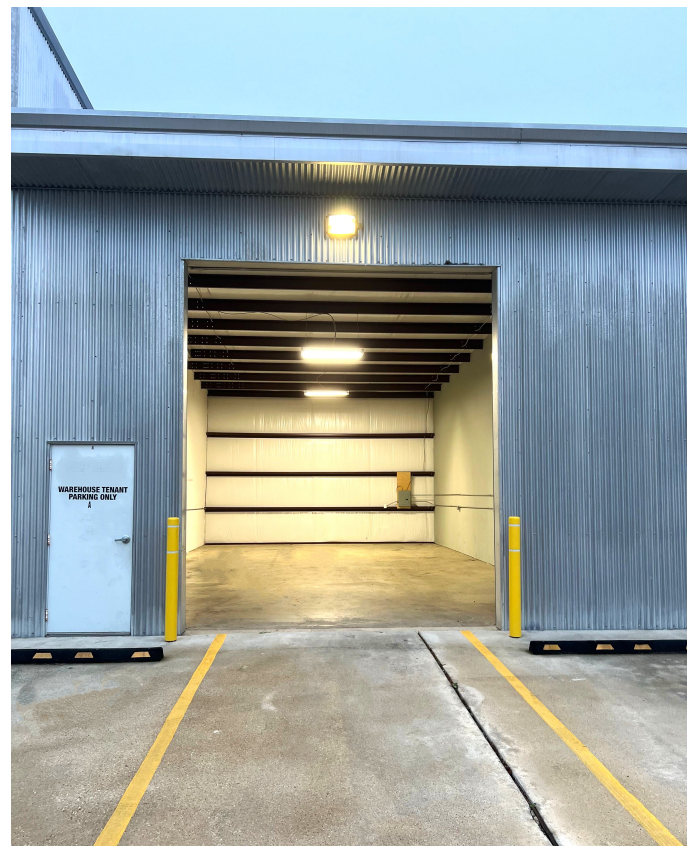
Leads@skyrei.com



106 E. Rusk, Suite 200  
Rockwall, Texas 75087

[www.skyrei.com](http://www.skyrei.com)

# 32403 & 3207 Tamina Rd. | Magnolia, TX



**Lexie Tanner**  
Office: 972.771.7577  
Cell: 469.651.9312  
Leads@skyrei.com



106 E. Rusk, Suite 200  
Rockwall, Texas 75087  
[www.skyrei.com](http://www.skyrei.com)