

10489 GRAND RIVER

10489 Grand River, Brighton, MI 48116



FOR LEASE

248.476.3700

EXCLUSIVELY LISTED BY:

JOHN PORTH

Vice President

jkporth@thomasduke.com

ETHAN WHITESELL

Associate

ewhitesell@thomasduke.com

OFFERING SUMMARY: 10489 Grand River | Brighton, MI 48116



PROPERTY OVERVIEW

Retail/Office property

OFFERING SUMMARY

Lease Rate: \$18.00 SF/yr (Gross)
Building Size: 17,141 SF
Available SF: 1,600 SF
Zoning: B-2

PROPERTY HIGHLIGHTS

- 30 day occupancy.
- Very competitive rates.
- Great location on Grand River
- Professional buildout.

BUILDING/PROPERTY INFORMATION: 10489 Grand River | Brighton, MI 48116

BUILDING INFORMATION

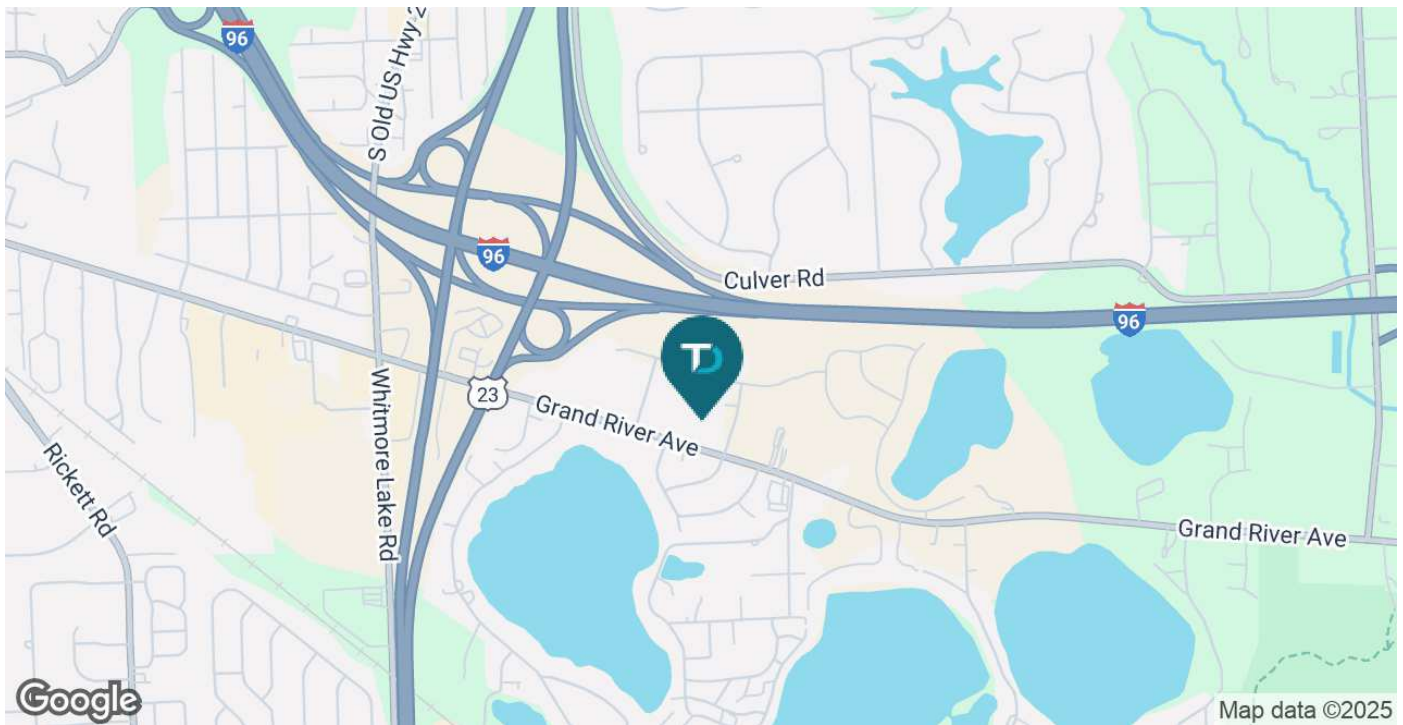
LEASE RATE: \$18.00/SF, Gross
Building Size: 17,141 SF
Available Space: Suite G - 1,600 SF
Utilities: Well & Septic
Parking Spaces: 37
Year Built: 1998

PROPERTY INFORMATION

Property Type: Office
Zoning: B-2
2025 Traffic Count: E. Grand River = 15,914
APN: 12-33-302-045

LOCATION INFORMATION

North side of Grand River, between Old US23 and Pleasant Valley Road in Brighton.



LEASE SPACES: 10489 Grand River | Brighton, MI 48116



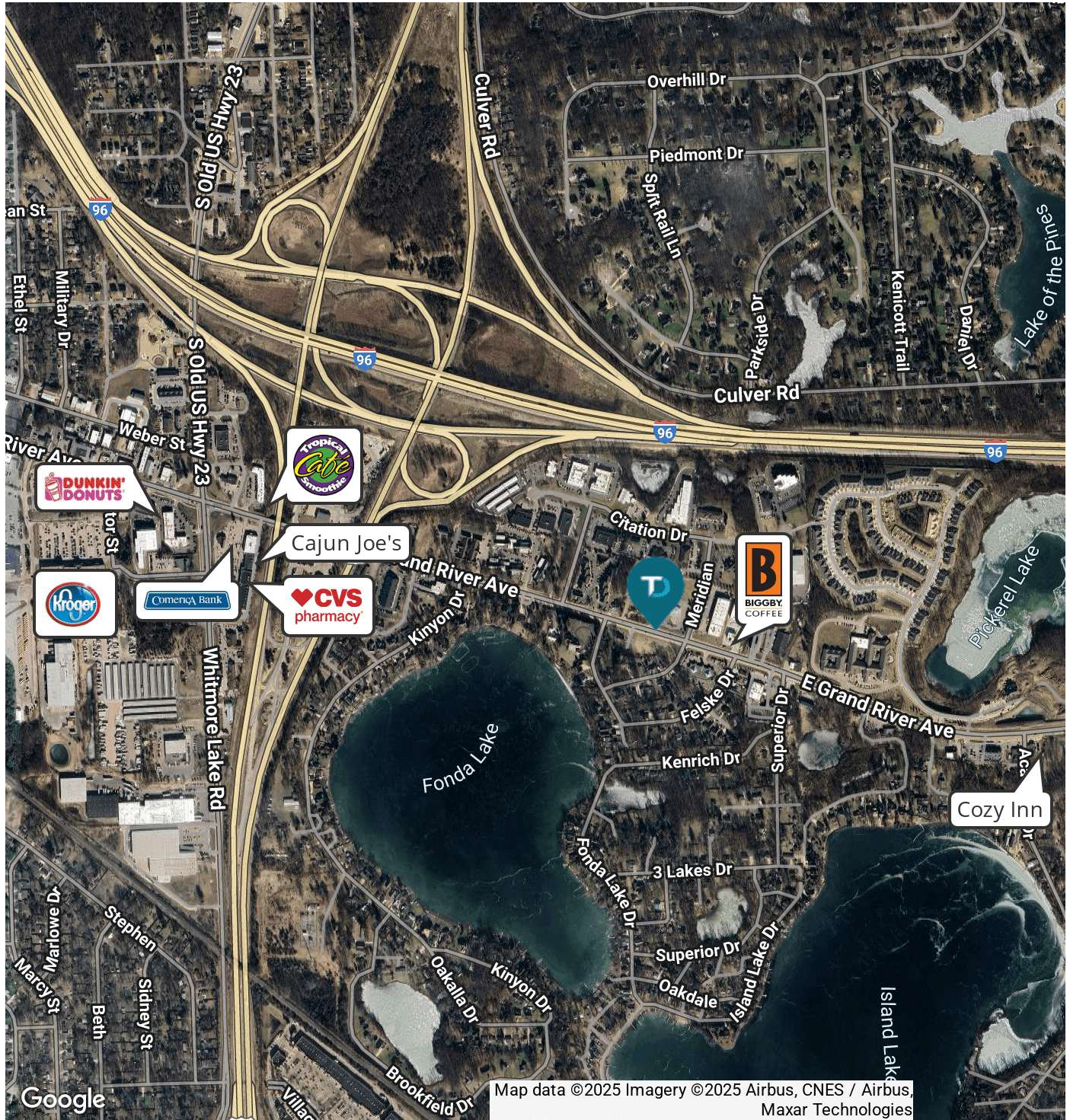
LEASE INFORMATION

| | | | |
|--------------|----------|-------------|---------------|
| Lease Type: | Gross | Lease Term: | Negotiable |
| Total Space: | 1,600 SF | Lease Rate: | \$18.00 SF/yr |

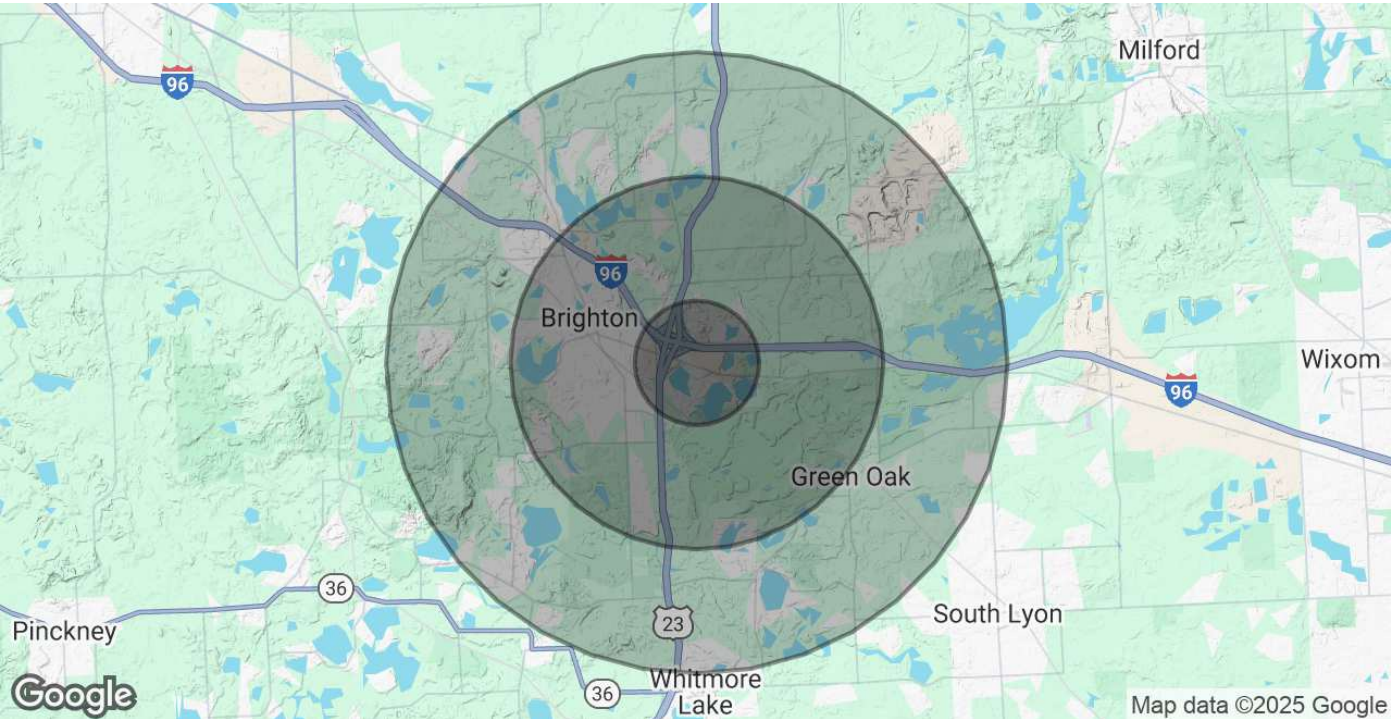
AVAILABLE SPACES

| SUITE | TENANT | SIZE (SF) | LEASE TYPE | LEASE RATE | DESCRIPTION |
|---------|-----------|-----------|------------|---------------|-------------|
| Suite G | Available | 1,600 SF | Gross | \$18.00 SF/yr | - |

RETAILER MAP: 10489 Grand River | Brighton, MI 48116



DEMOGRAPHICS MAP & REPORT: 10489 Grand River | Brighton, MI 48116



| POPULATION | 1 MILE | 3 MILES | 5 MILES |
|---|-----------|-----------|-----------|
| Total Population | 3,147 | 24,371 | 51,510 |
| Average Age | 43 | 44 | 44 |
| Average Age (Male) | 43 | 43 | 43 |
| Average Age (Female) | 43 | 45 | 45 |
| HOUSEHOLDS & INCOME | 1 MILE | 3 MILES | 5 MILES |
| Total Households | 1,338 | 10,074 | 20,489 |
| # of Persons per HH | 2.4 | 2.4 | 2.5 |
| Average HH Income | \$119,461 | \$137,260 | \$142,394 |
| Average House Value | \$366,210 | \$413,541 | \$428,451 |
| Demographics data derived from AlphaMap | | | |