

20505 Sibley Road

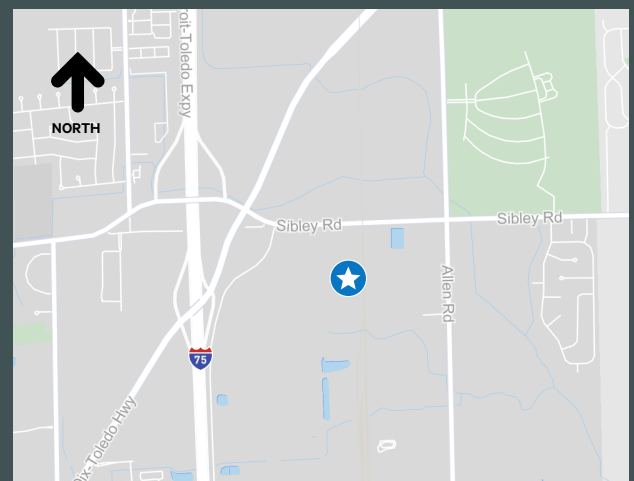
Brownstown Twp, MI

48,000 - 98,976 SF Available | Excellent Warehouse/Distribution Facility with ample parking

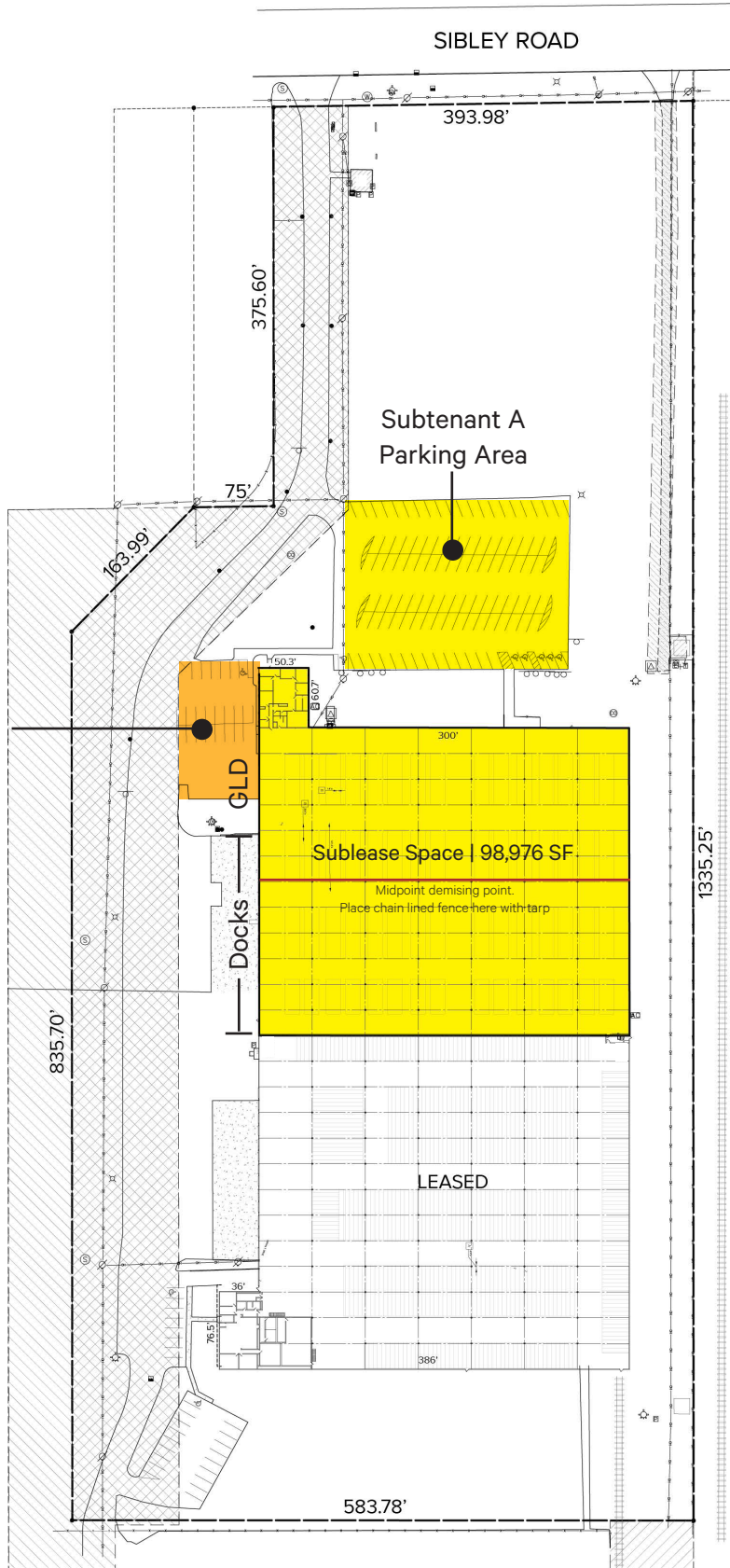


Property Features

- + Approximately 48,000 - 98,976 SF available
- + 3,000 SF of office
- + Up to 29' clear height at center
- + (1) 12x14 grade level door, (10) dock doors
- + 50 parking spaces or room to stage trailers
- + 1000 amps, 480 volts, 3-Phase power
- + Improvements made in 2019 include LED lighting, new roof, new paved parking lot, new insulation panels, new Cambridge heating units for warehouse and new ESFR fire suppression system
- + Lease Rate: \$6.75/sq. ft. NNN for all space
- + Separately metered for electric & gas
- + Available Q1 - 2025



Site Plan



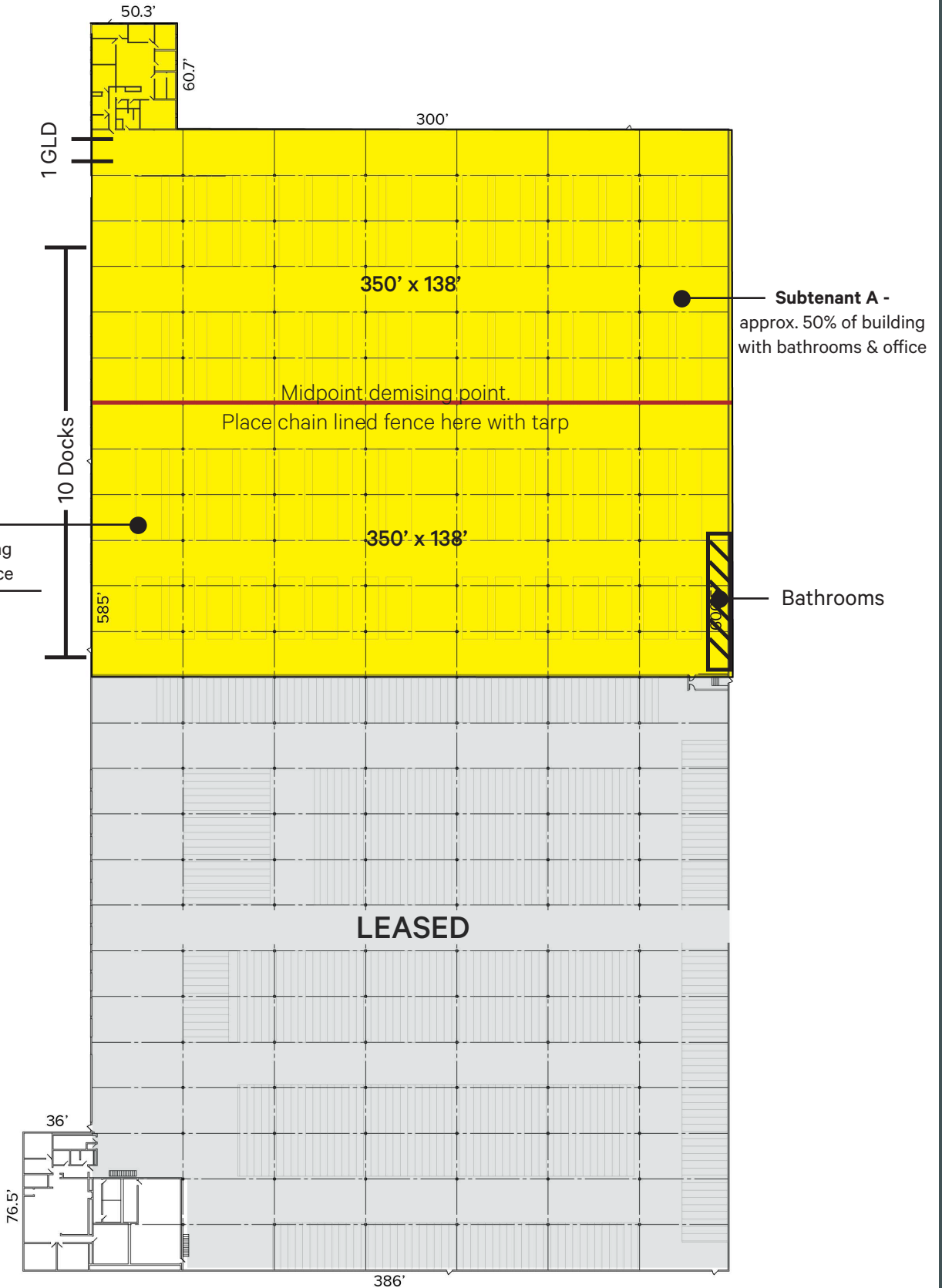
PROPERTY MEASURED BY SURVEY JUNE 2017

Floor Plan

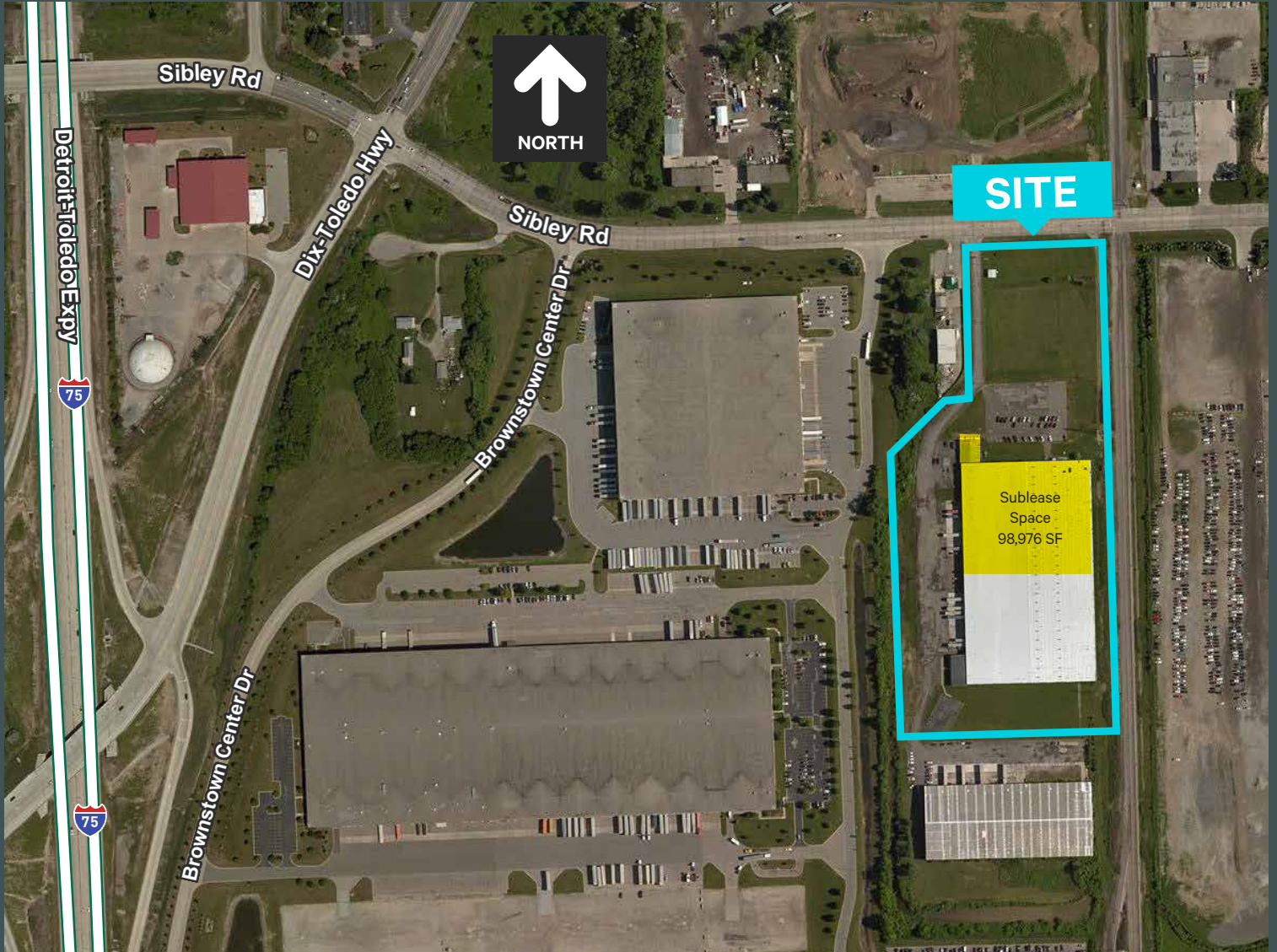
Warehouse can be demised for 2 subtenants or be a single suite



NORTH



Aerial



Contact Us

Peter Rogers
First Vice President
+1 248 351 2064
peter.rogers@cbre.com

Wyen Koan, CCIM
Senior Associate
C: +1 567 420 9990
T: +1 248 936 6847
wyen.koan@cbre.com

© 2024 CBRE, Inc. All rights reserved. This information has been obtained from sources believed reliable but has not been verified for accuracy or completeness. CBRE, Inc. makes no guarantee, representation or warranty and accepts no responsibility or liability as to the accuracy, completeness, or reliability of the information contained herein. You should conduct a careful, independent investigation of the property and verify all information. Any reliance on this information is solely at your own risk.