

# Prime Location

## Westminster Business Park

70 Catamore Boulevard  
East Providence, RI 02914  
[www.cbre.com](http://www.cbre.com)

### Property Features

CBRE, Inc. is pleased to offer  $\pm 4,615$  SF,  $\pm 1,800$  SF and  $\pm 1,187$  SF for lease at the well-located 70 Catamore Boulevard in East Providence, Rhode Island. The property is located within the Westminster Business Park, one of Rhode Island's most established professional parks, and offers immediate access to Route 6 and Interstate 195 allowing convenient travel throughout Rhode Island and nearby Massachusetts.

### Property Highlights

- +  $\pm 4,615$  SF,  $\pm 1,800$  SF and  $\pm 1,187$  SF available now
- + Ample free on-site parking
- + Excellent highway access
- + Professional, established business park
- + In proximity to restaurants, retail, medical, banking and other amenities



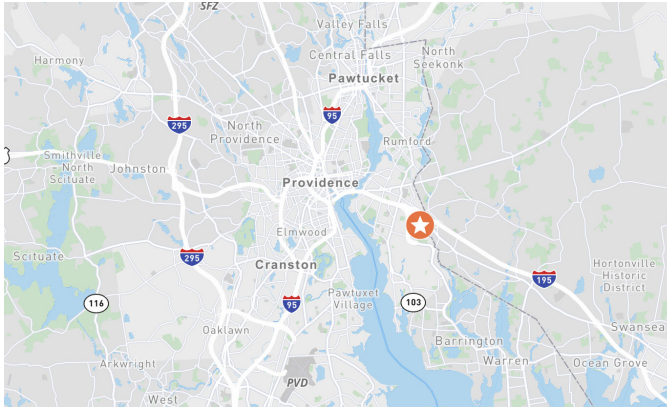
## Prime Location

70 Catamore Boulevard | East Providence, RI 02914

# For Lease

# Property Specifications

## Building Location

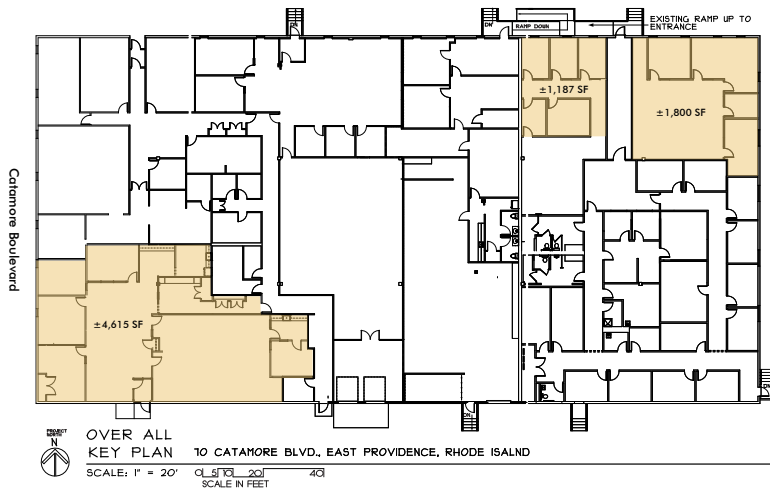


## Building Specifications

### 70 Catamore Boulevard

Building Size	28,800 SF
Land Size	5.99 acres
Available Space	±1,187 SF - ±4,615 SF
Year Built	1980
Ceiling Height	12' -14'
Parking Ratio	4/1,000 SF

## Floor Plan



## Contact Us

### Alden Anderson, Jr.

Senior Vice President

+1 401 621 4338

alden.anderson@cbre.com

### John Cregan

Vice President

+1 401 621 4335

john.cregan@cbre.com

© 2023 CBRE, Inc. All rights reserved. This information has been obtained from sources believed reliable, but has not been verified for accuracy or completeness. You should conduct a careful, independent investigation of the property and verify all information. Any reliance on this information is solely at your own risk. CBRE and the CBRE logo are service marks of CBRE, Inc. All other marks displayed on this document are the property of their respective owners, and the use of such logos does not imply any affiliation with or endorsement of CBRE. Photos herein are the property of their respective owners. Use of these images without the express written consent of the owner is prohibited.