



CANDLER

REAL ESTATE

Whiporwill Road | Gillsville, GA 30543

14.84 Acres

LEE HEMMER, CCIM, SIOR

Principal/Managing Broker lee@candler.com

Candler Real Estate | 135 Maple Street NW, Gainesville GA | 770.988.6383 | candler.com

Local Understanding
+ **Industry Expertise**

Land for Sale

Whiporwill Road, Gillsville, GA 30543



Property Description

Invest in wooded/recreational property located on Whiporwill Road in Gillsville, GA. This recreational parcel offers a wealth of potential for land, or other investors. Great opportunity for a hunting camp and/or outdoor recreation. ATV trails are in place and traverse the property.

Offering Summary

Sale Price:	\$285,000
Lot Size:	14.837 Acres

Demographics	10 Miles	5 Miles	1 Mile
Total Households	33,797	5,782	113
Total Population	100,684	18,574	325
Average HH Income	\$81,370	\$78,208	\$92,541

Presented By:

Lee Hemmer, CCIM, SIOR

770.988.6383

Principal/Managing Broker

lee@candler.com



135 Maple Street NW, Gainesville, GA 30501 | 770.988.6383 | candler.com

Whiporwill Road, Gillsville, GA 30543



Lee Hemmer, CCIM, SIOR
770.988.6383
Principal/Managing Broker
lee@candler.com



135 Maple Street NW, Gainesville, GA 30501 | 770.988.6383 | **candler.com**

Land for Sale

Whiporwill Road, Gillsville, GA 30543



Presented By:

Lee Hemmer, CCIM, SIOR

770.988.6383

Principal/Managing Broker

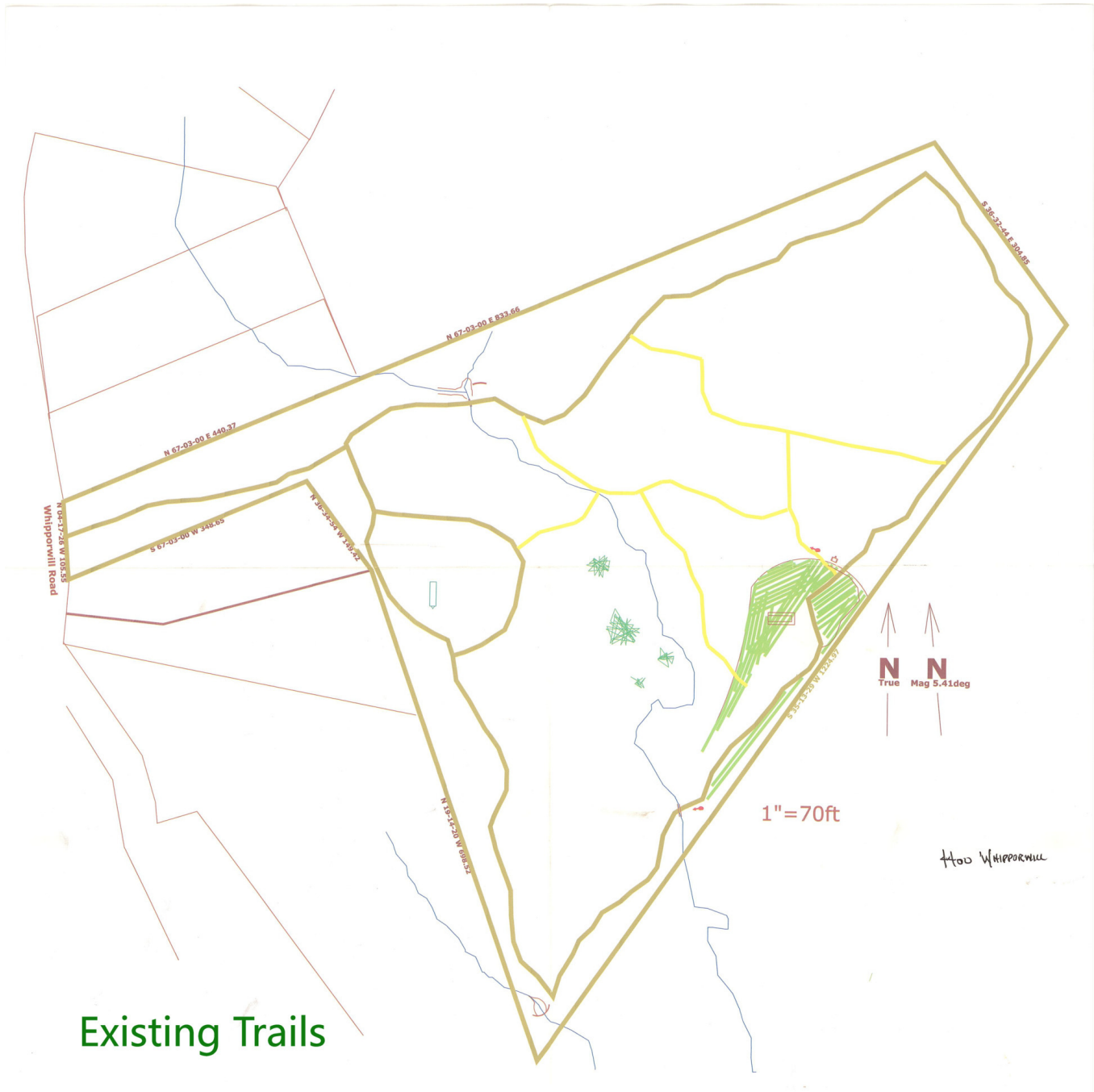
lee@candler.com



135 Maple Street NW, Gainesville, GA 30501 | 770.988.6383 | candler.com

Land for Sale

Whiporwill Road, Gillsville, GA 30543



Existing Trails

Presented By:

Lee Hemmer, CCIM, SIOR

770.988.6383

Principal/Managing Broker

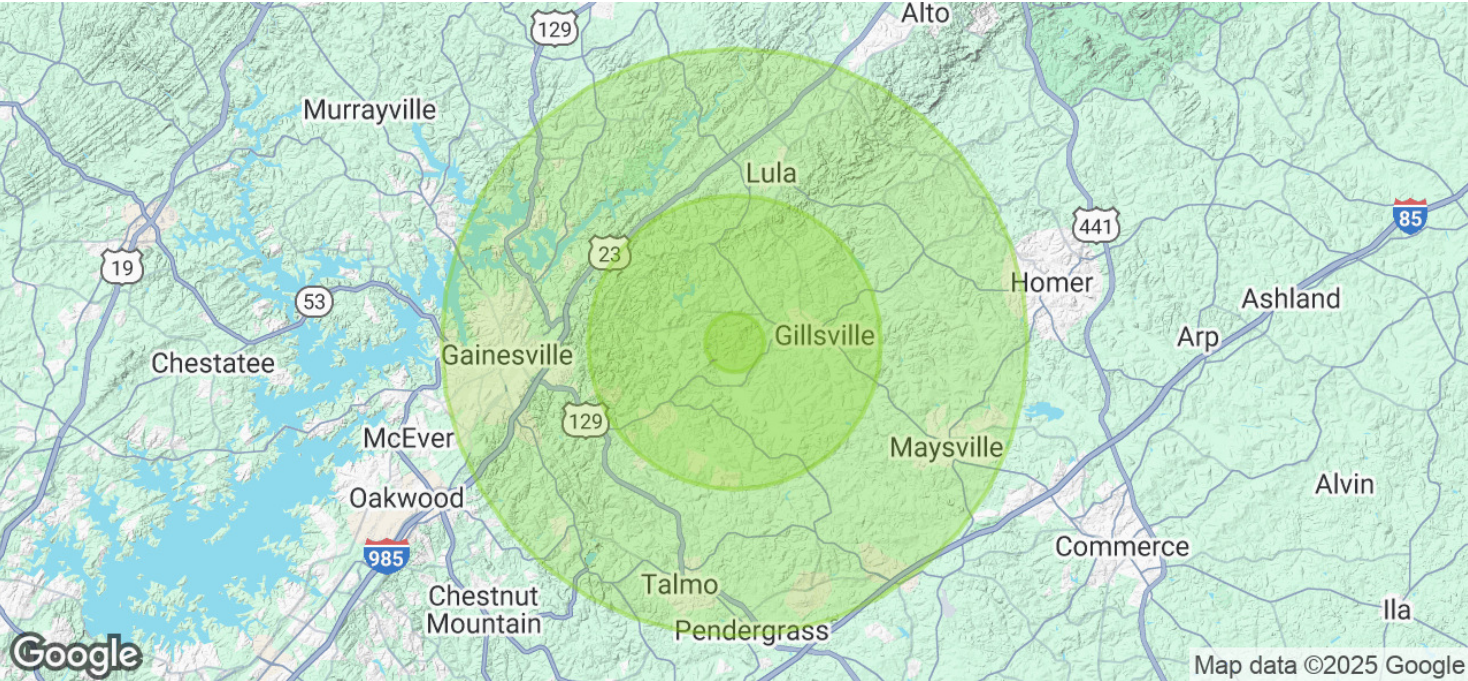
lee@candler.com



135 Maple Street NW, Gainesville, GA 30501 | 770.988.6383 | candler.com

Land for Sale

Whiporwill Road, Gillsville, GA 30543



Population	10 Miles	5 Miles	1 Mile
Total Population	100,684	18,574	325
Average Age	38	37	40
Average Age (Male)	36	36	39
Average Age (Female)	39	38	41

Households & Income	10 Miles	5 Miles	1 Mile
Total Households	33,797	5,782	113
# of Persons per HH	3	3.2	2.9
Average HH Income	\$81,370	\$78,208	\$92,541
Average House Value	\$361,711	\$327,915	\$310,050

Demographics data derived from AlphaMap

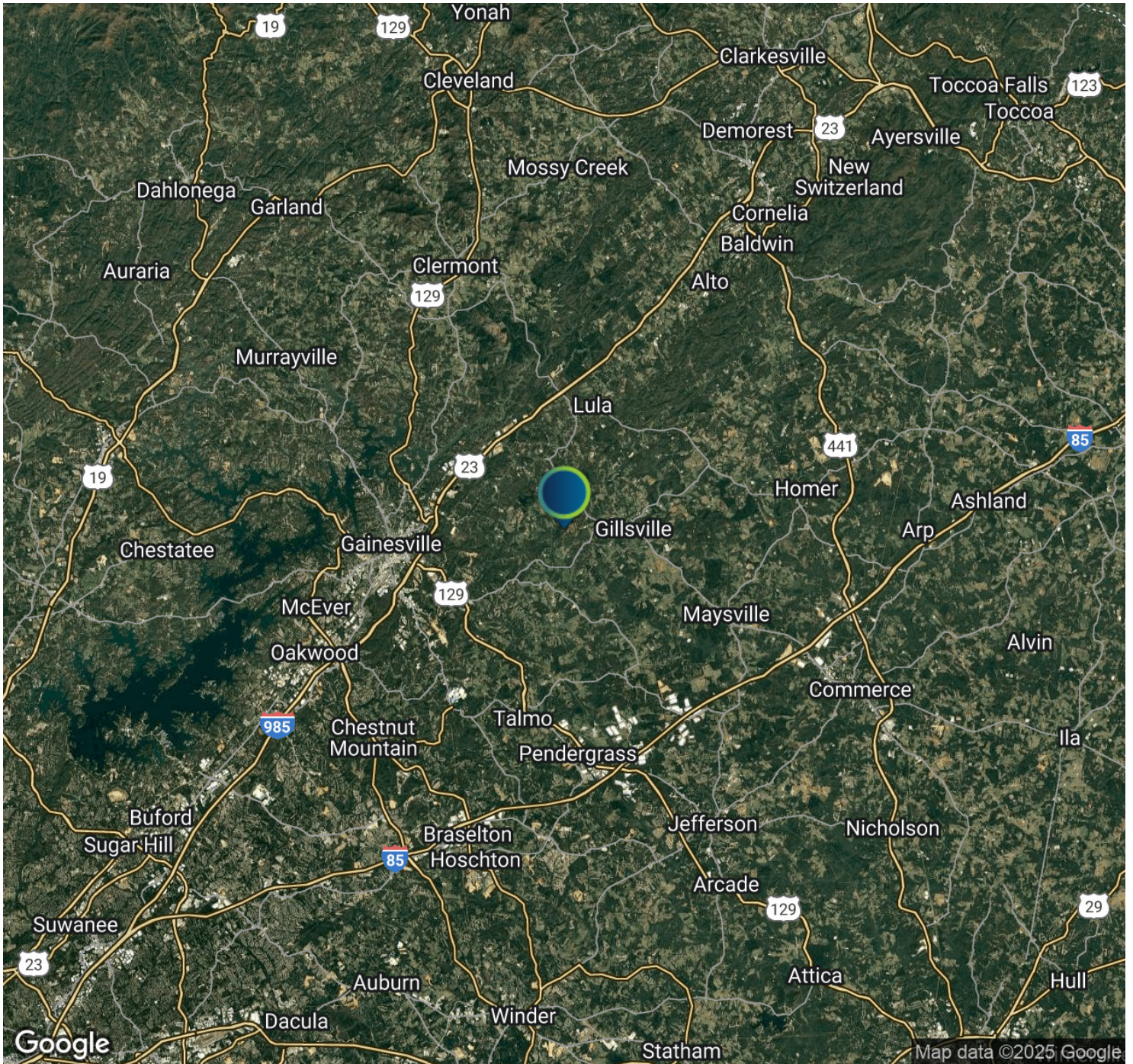
Presented By:
Lee Hemmer, CCIM, SIOR
770.988.6383
Principal/Managing Broker
lee@candler.com



135 Maple Street NW, Gainesville, GA 30501 | 770.988.6383 | candler.com

Land for Sale

Whiporwill Road, Gillsville, GA 30543



Presented By:

Lee Hemmer, CCIM, SIOR

770.988.6383

Principal/Managing Broker

lee@candler.com



135 Maple Street NW, Gainesville, GA 30501 | 770.988.6383 | candler.com

Land for Sale

Whiporwill Road, Gillsville, GA 30543



Lee Hemmer, CCIM, SIOR

Principal/Managing Broker

lee@candler.com

Direct: **770.988.6383**

GA #183296

Candler Real Estate
135 Maple Street NW
Gainesville, GA 30501
770.988.6383

Presented By:

Lee Hemmer, CCIM, SIOR

770.988.6383

Principal/Managing Broker

lee@candler.com



135 Maple Street NW, Gainesville, GA 30501 | 770.988.6383 | **candler.com**