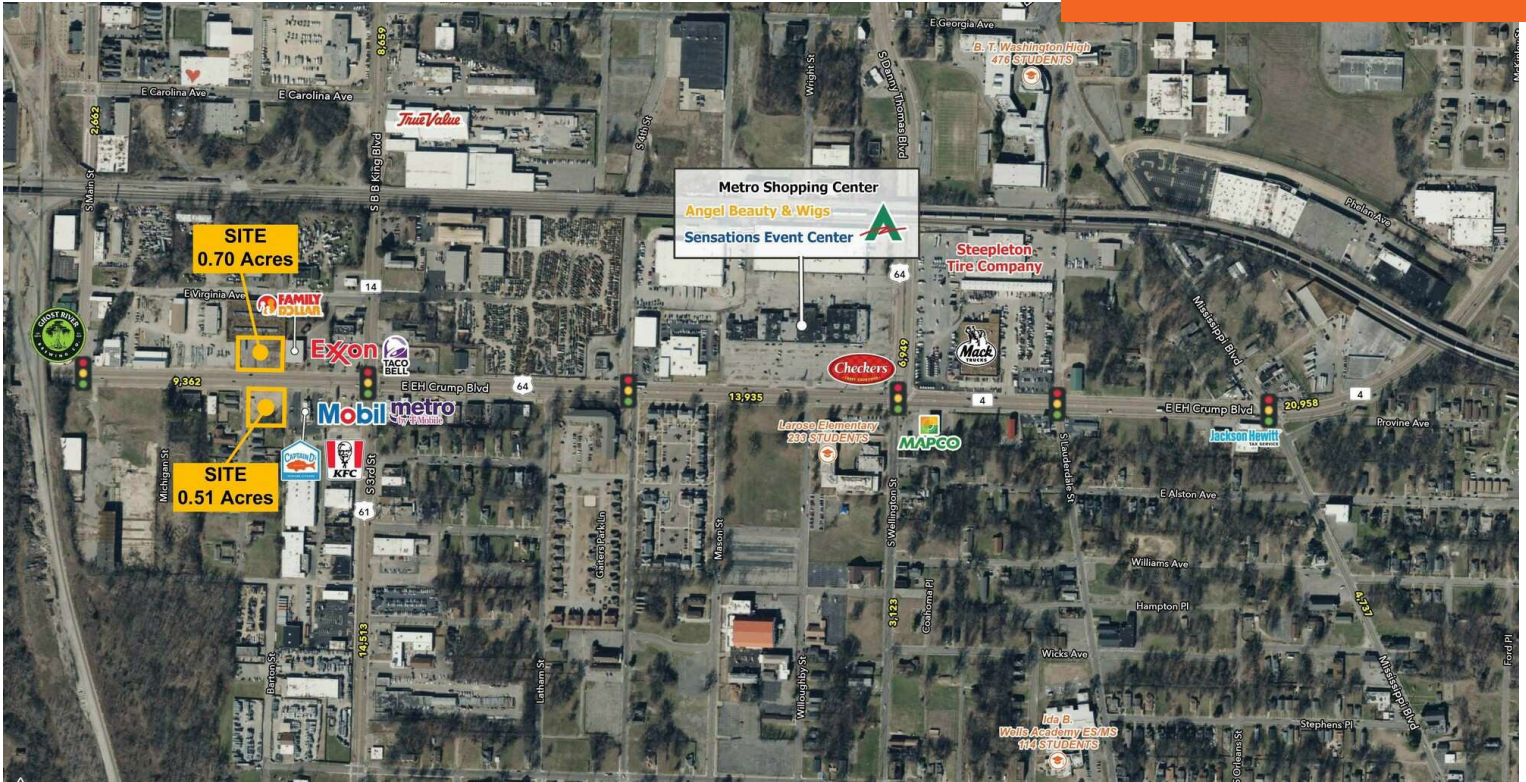


E.H. CRUMP BLVD PARCELS

166 EAST E.H.CRUMP BLVD, MEMPHIS, TN 38106

FOR SALE



LOCATION DESCRIPTION

Land For Sale on E.H. Crump Boulevard just west of the intersection with South 3rd Street (US-61) in Downtown Memphis, Tennessee

PROPERTY HIGHLIGHTS

- 0.70 acres and 0.51 acres For Sale
- Two parcels for sale across the street from one another
- Can be sold together or separately
- Estimated completion of the I-55 Interchange at Crump Blvd is 2025
- Downtown Memphis population is over 26,000 residents
- 3 minute drive from the South Main District and FedEx Forum
- Traffic Count: E.H. Crump Blvd 9,362 AADT



DEMOGRAPHICS	1 MILE	3 MILES	5 MILES
Population	10,209	63,302	130,661
Daytime Population	15,246	119,165	194,402
Households	5,783	30,355	60,804
Average HH Income	\$99,435	\$70,245	\$71,702



SIDNEY SEALE

sidney.seale@tscg.com
901.252.1039

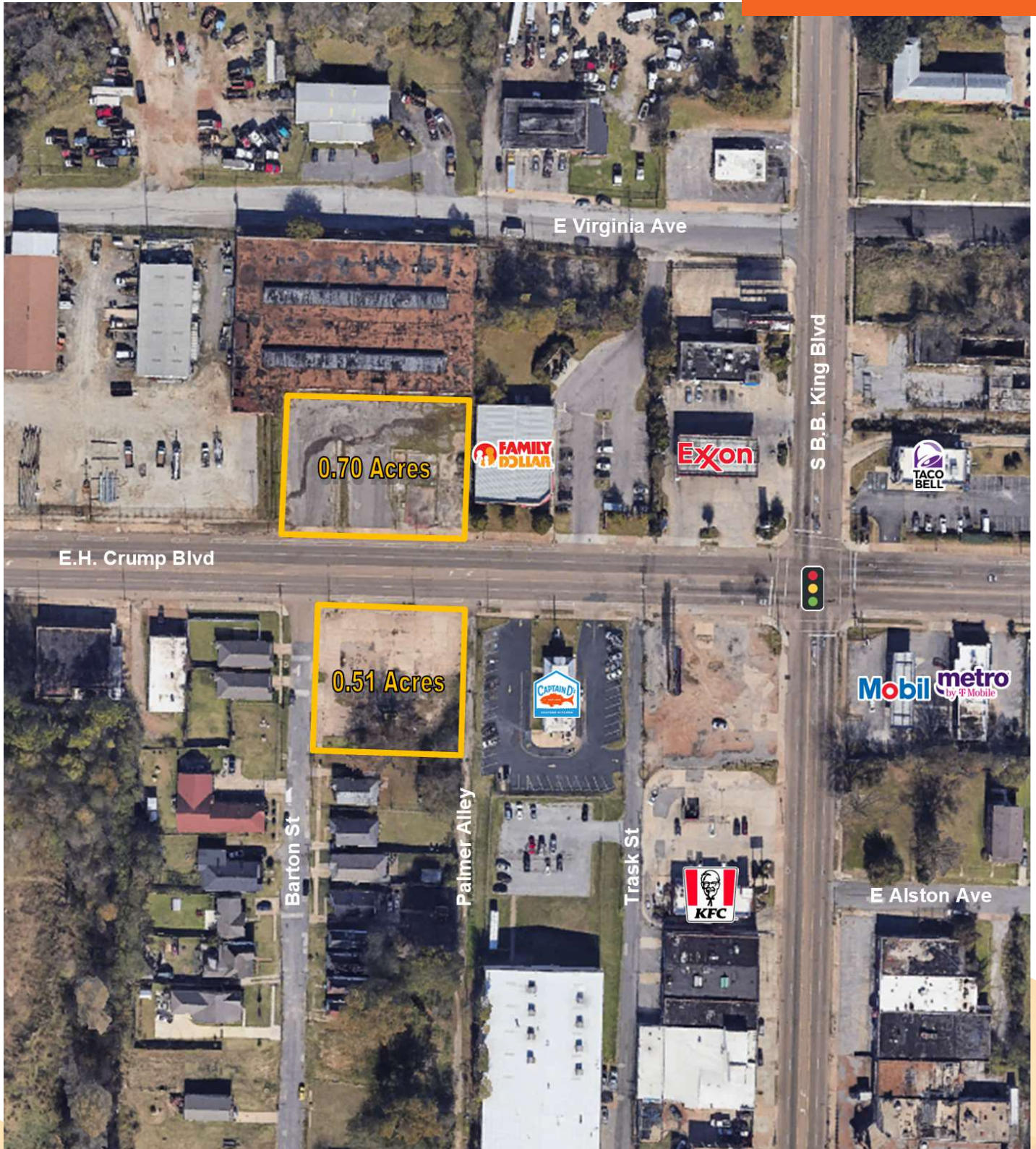
SHAWN MASSEY, CCIM, CRPP, ALC

shawn.massey@tscg.com
901.334.5702

E.H. CRUMP BLVD PARCELS

166 EAST E.H.CRUMP BLVD, MEMPHIS, TN 38106

FOR SALE



SIDNEY SEALE

sidney.seale@tscg.com

901.252.1039

SHAWN MASSEY, CCIM, CRRP, ALC

shawn.massey@tscg.com

901.334.5702