

501 Wymore Road

Office Space for Lease



**501 Wymore Road,
Winter Park, Florida 32789**

Property Details:

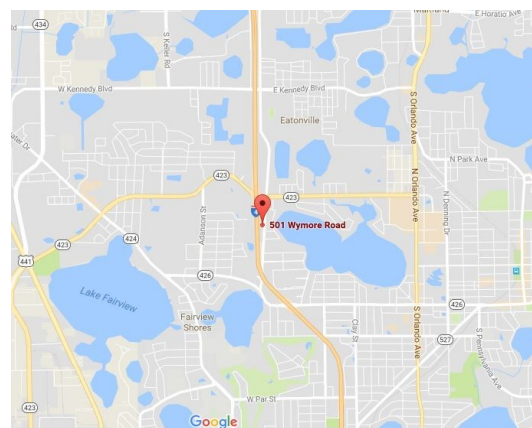
Total Space Available	7,712 SF
Rental Rate	Negotiable
Min. Divisible	7,712 SF
Max. Contiguous	7,712 SF
Property Type	Office
Building Class	C
Year Built	1981
Lot Size	4.72 AC
Zoning Description	P-O

Spaces:

Suite	Space Available	Max Contiguous	Price	Date Available	Description
201	7,712 SF	7,712 SF	Negotiable	Now	Office

Location Description:

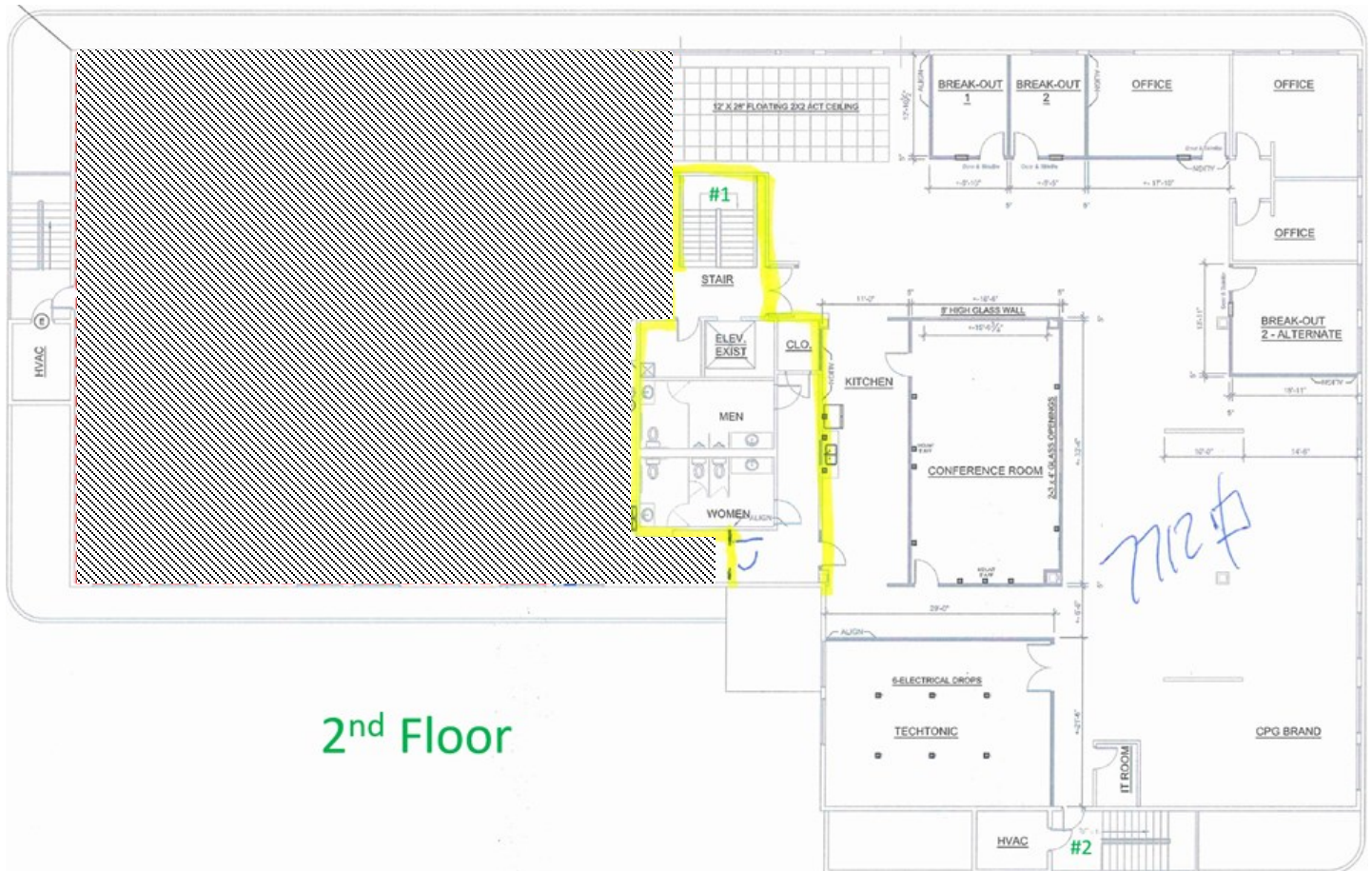
- Two story, full service building
- Excellent location with I-4 visibility
- I-4 signage available
- Quick access to I-4, Lee Road, Fairbanks Ave., and US Highway 17-92
- Professionally landscaped



Commercial Sales & Leasing | Property Management | Project Development | Acquisitions & Dispositions | Construction Services

Southeastern Realty Group, Inc. - 933 Lee Road Suite 400 - Orlando, FL 32810 - t: 407-629-5595 - f: 407-645-2035

Floor Plan:



2nd Floor

2nd Floor Space Available

Suite 201 7,712 SF

Southeastern Realty Group
933 Lee Road, Suite 400, Orlando, Florida 32810
407-629-5595 phone, 407-645-2035 fax
Visit our website at www.southeasternrealty.com

The information contained herein is from sources deemed reliable, but no warranty or representation is made as to the accuracy thereof and no liability may be imposed.