

306

GRAND STREET
WILLIAMSBURG, BROOKLYN

Between Roebling & Havemeyer Streets

RETAIL FOR LEASE



APPROXIMATE SIZE

Ground Floor: 1,500 SF
Basement: 700 SF

ASKING RENT

\$8,000/Month

POSSESSION

Immediate

TERM

Negotiable

FRONTAGE

17 FT

COMMENTS

- Space is in white-box condition
- Dividing walls can be taken down for an open layout
- Retail space in the heart of Williamsburg
- Strong co-tenancy and high residential area
- All uses considered

NEIGHBORS

The Four Horsemen • The Commodore • Maracuja
• Miari • Clem's • Sauced • de Mole • Mociun •
Whole Foods • Tacombi • Maison Premiere • Mizu
• Fini Pizza • Milk Bar • Horses and Divorces

TRANSPORTATION



PROPERTY INFORMATION

JAMES FAMULARO

President

KEVIN BISCONTI

Director

212.468.5962

kbisconti@meridiancapital.com

STEPHEN LIGAMBI

Associate

212.468.5985

sligambi@meridiancapital.com

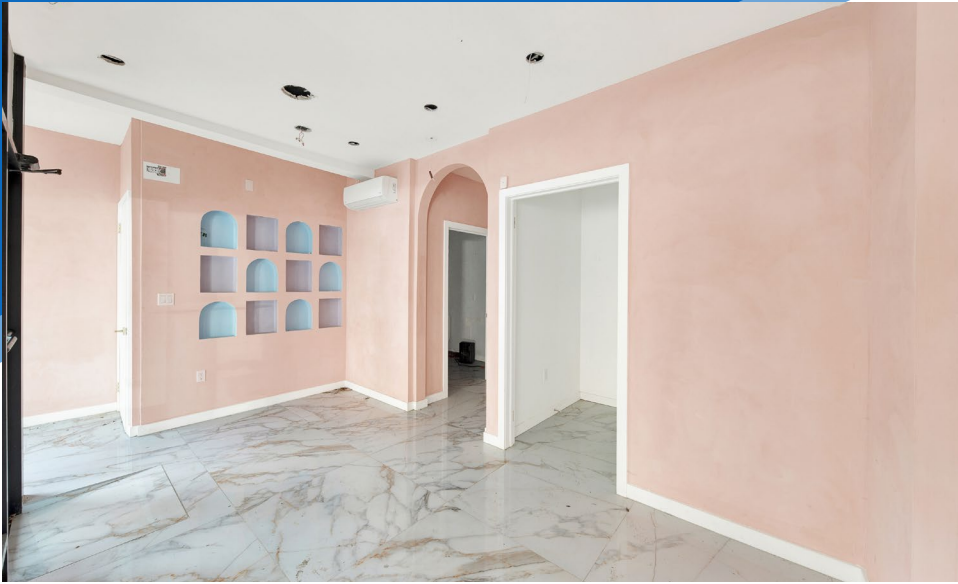


All information supplied is from sources deemed reliable and is furnished subject to errors, omissions, modifications, removal of the listing from sale or lease, and to any listing conditions, including the rates and manner of payment of commissions for particular offerings imposed by Meridian Capital Group. This information may include estimates and projections prepared by Meridian Capital Group with respect to future events, and these future events may or may not actually occur. Such estimates and projections reflect various assumptions concerning anticipated results. While Meridian Capital Group believes these assumptions are reasonable, there can be no assurance that any of these estimates and projections will be correct. Therefore, actual results may vary materially from these estimates and projections. Any square footage dimensions set forth are approximate.

306 GRAND STREET

WILLIAMSBURG, BROOKLYN | Between Roebling and Havemeyer Streets

RETAIL FOR LEASE



INTERIOR

JAMES FAMULARO
President

KEVIN BISCONTI
Director
212.468.5962
kbisconti@meridiancapital.com

STEPHEN LIGAMBI
Associate
212.468.5985
sligambi@meridiancapital.com



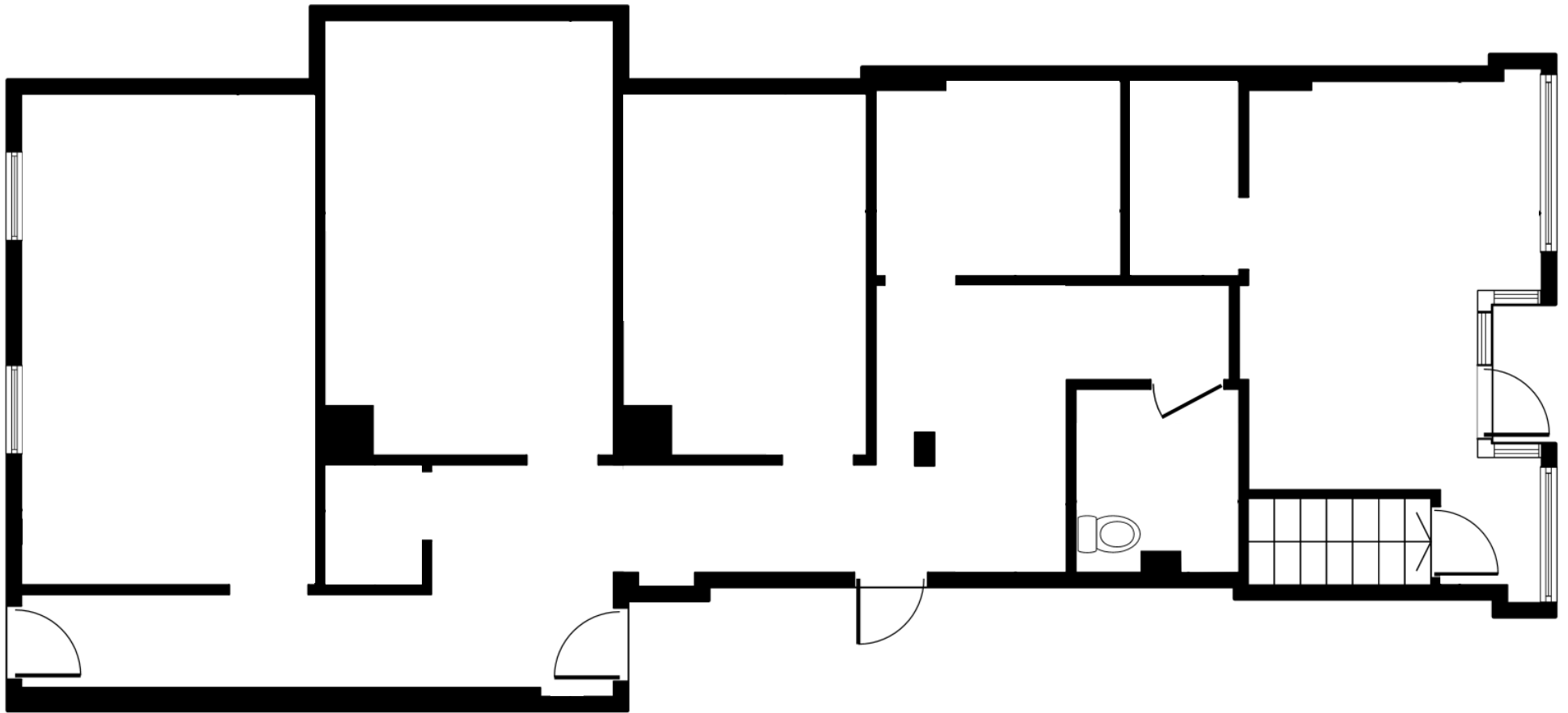
All information supplied is from sources deemed reliable and is furnished subject to errors, omissions, modifications, removal of the listing from sale or lease, and to any listing conditions, including the rates and manner of payment of commissions for particular offerings imposed by Meridian Capital Group. This information may include estimates and projections prepared by Meridian Capital Group with respect to future events, and these future events may or may not actually occur. Such estimates and projections reflect various assumptions concerning anticipated results. While Meridian Capital Group believes these assumptions are reasonable, there can be no assurance that any of these estimates and projections will be correct. Therefore, actual results may vary materially from these estimates and projections. Any square footage dimensions set forth are approximate.

306 GRAND STREET

WILLIAMSBURG, BROOKLYN | Between Roebling and Havemeyer Streets

RETAIL FOR LEASE

FLOOR PLAN



JAMES FAMULARO
President

KEVIN BISCONTI
Director
212.468.5962
kbisconti@meridiancapital.com

STEPHEN LIGAMBI
Associate
212.468.5985
sligambi@meridiancapital.com



All information supplied is from sources deemed reliable and is furnished subject to errors, omissions, modifications, removal of the listing from sale or lease, and to any listing conditions, including the rates and manner of payment of commissions for particular offerings imposed by Meridian Capital Group. This information may include estimates and projections prepared by Meridian Capital Group with respect to future events, and these future events may or may not actually occur. Such estimates and projections reflect various assumptions concerning anticipated results. While Meridian Capital Group believes these assumptions are reasonable, there can be no assurance that any of these estimates and projections will be correct. Therefore, actual results may vary materially from these estimates and projections. Any square footage dimensions set forth are approximate.

306 GRAND STREET

WILLIAMSBURG, BROOKLYN | Between Roebing and Havemeyer Streets

RETAIL FOR LEASE



NEIGHBORS

JAMES FAMULARO
President

KEVIN BISCONTI
Director
212.468.5962
kbisconti@meridiancapital.com

STEPHEN LIGAMBI
Associate
212.468.5985
sligambi@meridiancapital.com



All information supplied is from sources deemed reliable and is furnished subject to errors, omissions, modifications, removal of the listing from sale or lease, and to any listing conditions, including the rates and manner of payment of commissions for particular offerings imposed by Meridian Capital Group. This information may include estimates and projections prepared by Meridian Capital Group with respect to future events, and these future events may or may not actually occur. Such estimates and projections reflect various assumptions concerning anticipated results. While Meridian Capital Group believes these assumptions are reasonable, there can be no assurance that any of these estimates and projections will be correct. Therefore, actual results may vary materially from these estimates and projections. Any square footage dimensions set forth are approximate.