

# SCOTTSDALE REDEVELOPMENT OPPORTUNITY

FOR SALE: \$4,300,000

**THREE PROPERTIES AVAILABLE FOR PURCHASE  
LOCATED NORTH OF THE NWC OF 68TH STREET AND THOMAS ROAD  
SCOTTSDALE, AZ 85251**



**PAUL BLUM, J.D., CCIM**  
602.369.7575  
[paul@blumroberts.com](mailto:paul@blumroberts.com)

**REBECCA ROBERTS**  
602.791.6262  
[rebecca@blumroberts.com](mailto:rebecca@blumroberts.com)

**BLUM-ROBERTS GROUP**



*Unlocking The Value of Real Estate*

This document/email has been prepared by West USA Realty Commercial Division for advertising and general information only. West USA Realty Commercial Division makes no guarantees, representations or warranties of any kind, expressed or implied, regarding the information including, but not limited to, warranties of content, accuracy and reliability. Any interested party should undertake their own inquiries as to the accuracy of the information. West USA Realty Commercial Division excludes unequivocally all inferred or implied terms, conditions and warranties arising out of this document and excludes all liability for loss and damages arising there from. This publication is the copyrighted property of West USA Realty and/or its licensees. © 2024. All rights reserved.

**14350 North 87th Street  
Suite 180  
Scottsdale, AZ 85260**

# SCOTTSDALE REDEVELOPMENT OPPORTUNITY

## SUMMARY

### Addresses:

**3030 North 68th Street, Scottsdale, Arizona 85251**  
**16,960 Square Feet**  
**Building with ±2,627 Square Feet**  
**Price:\$1,300,000**

**6739 East Avalon Drive, Scottsdale, Arizona 85251**  
**16,954 Square Feet**  
**Price: \$1,300,000**

**3030 North 67th Place, Scottsdale, Arizona 85251**  
**22,639 Square Feet**  
**Containing a Dental Building of ±6,169 Square Feet**  
**Price: \$1,700,000**

### Sale Price for All:

**\$4,300,000**

### Zoning:

**C-1, City of Scottsdale**

### APNs:

**130-09-014, 130-09-012, 130-09-011 & 130-09-010**

**PAUL BLUM, J.D., CCIM**  
**602.369.7575**  
[paul@blumroberts.com](mailto:paul@blumroberts.com)

**REBECCA ROBERTS**  
**602.791.6262**  
[rebecca@blumroberts.com](mailto:rebecca@blumroberts.com)

**BLUM-ROBERTS GROUP**



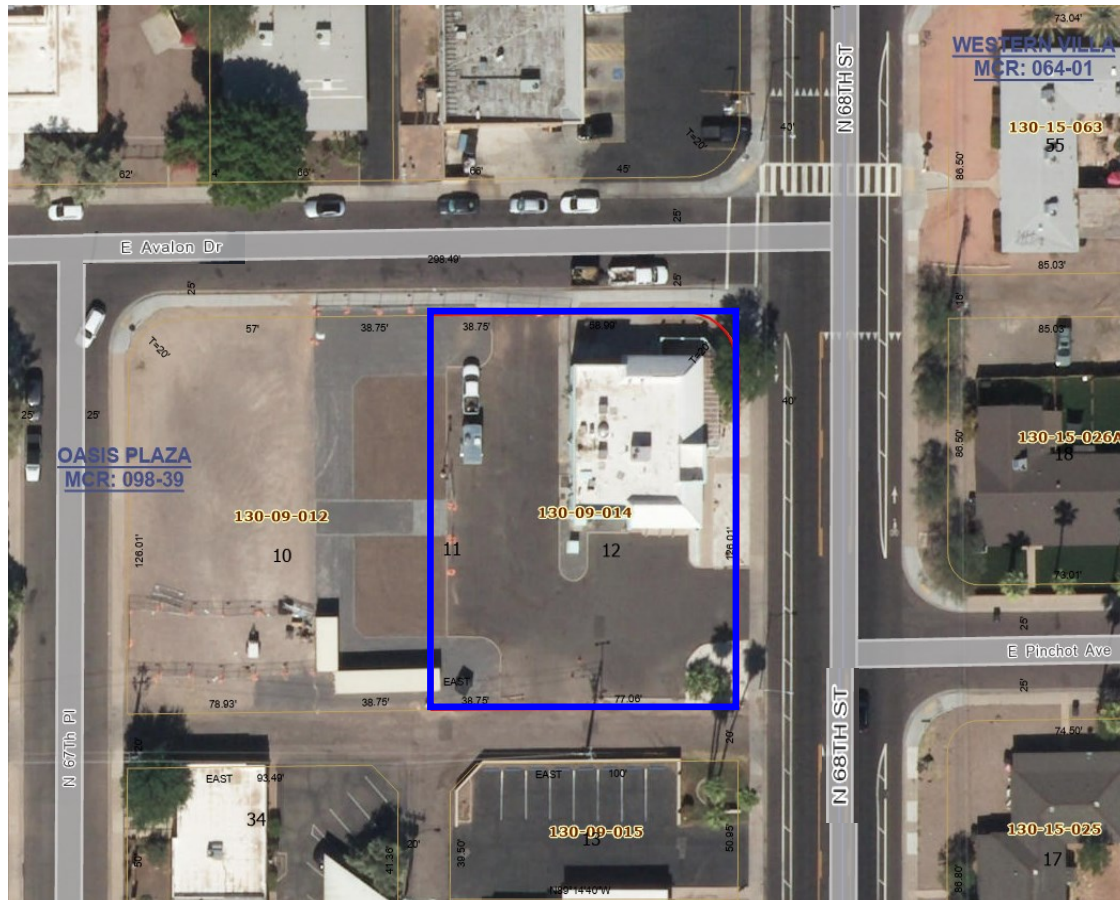
*Unlocking The Value of Real Estate*

This document/email has been prepared by West USA Realty Commercial Division for advertising and general information only. West USA Realty Commercial Division makes no guarantees, representations or warranties of any kind, expressed or implied, regarding the information including, but not limited to, warranties of content, accuracy and reliability. Any interested party should undertake their own inquiries as to the accuracy of the information. West USA Realty Commercial Division excludes unequivocally all inferred or implied terms, conditions and warranties arising out of this document and excludes all liability for loss and damages arising there from. This publication is the copyrighted property of West USA Realty and/or its licensees. © 2024. All rights reserved.

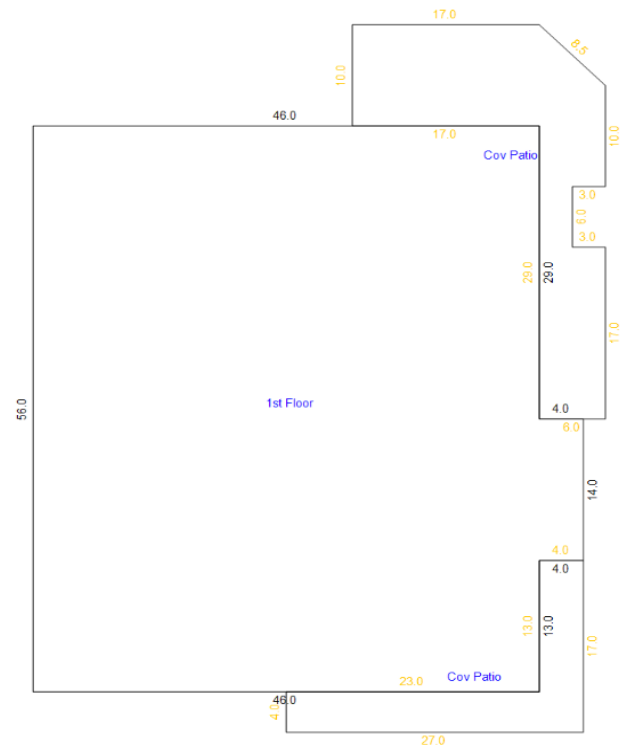
**14350 North 87th Street**  
**Suite 180**  
**Scottsdale, AZ 85260**

# SCOTTSDALE REDEVELOPMENT OPPORTUNITY

## ASSESSOR AERIAL PHOTO



**130-09-014 - 3030 North 68th Street**  
**16,960 Square Feet,**  
**Building of ±2,627 Square Feet**  
**Price:\$1,300,000**



**PAUL BLUM, J.D., CCIM**  
**602.369.7575**  
[paul@blumroberts.com](mailto:paul@blumroberts.com)

**REBECCA ROBERTS**  
**602.791.6262**  
[rebecca@blumroberts.com](mailto:rebecca@blumroberts.com)

**BLUM-ROBERTS GROUP**



*Unlocking The Value of Real Estate*

This document/email has been prepared by West USA Realty Commercial Division for advertising and general information only. West USA Realty Commercial Division makes no guarantees, representations or warranties of any kind, expressed or implied, regarding the information including, but not limited to, warranties of content, accuracy and reliability. Any interested party should undertake their own inquiries as to the accuracy of the information. West USA Realty Commercial Division excludes unequivocally all inferred or implied terms, conditions and warranties arising out of this document and excludes all liability for loss and damages arising there from. This publication is the copyrighted property of West USA Realty and/or its licensees. © 2024. All rights reserved.

**14350 North 87th Street**  
**Suite 180**  
**Scottsdale, AZ 85260**

# SCOTTSDALE REDEVELOPMENT OPPORTUNITY

## ASSESSOR AERIAL PHOTO



**130-09-012**

**6739 East Avalon Drive**

**16,954 Square Feet**

**Price: \$1,300,000**

**PAUL BLUM, J.D., CCIM**  
**602.369.7575**  
[paul@blumroberts.com](mailto:paul@blumroberts.com)

**REBECCA ROBERTS**  
**602.791.6262**  
[rebecca@blumroberts.com](mailto:rebecca@blumroberts.com)

**BLUM-ROBERTS GROUP**



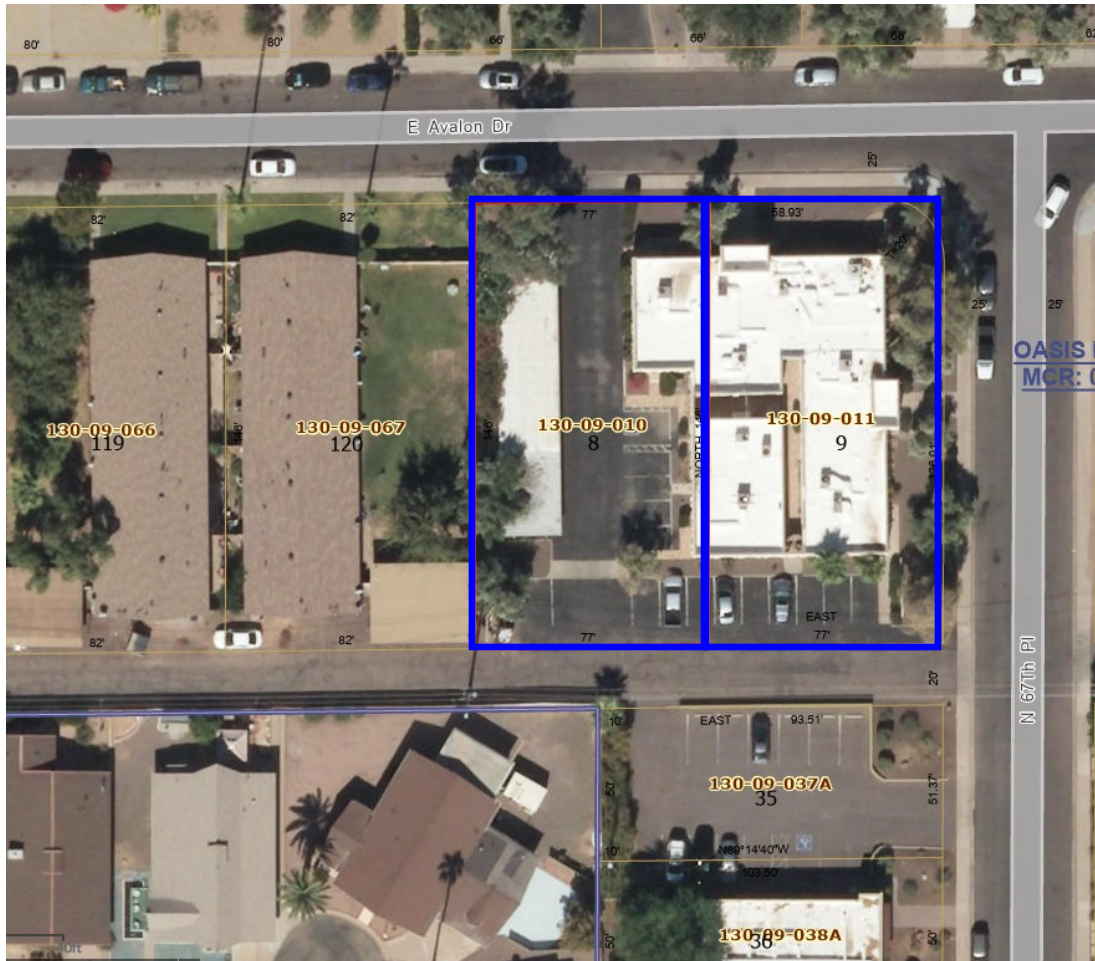
*Unlocking The Value of Real Estate*

This document/email has been prepared by West USA Realty Commercial Division for advertising and general information only. West USA Realty Commercial Division makes no guarantees, representations or warranties of any kind, expressed or implied, regarding the information including, but not limited to, warranties of content, accuracy and reliability. Any interested party should undertake their own inquiries as to the accuracy of the information. West USA Realty Commercial Division excludes unequivocally all inferred or implied terms, conditions and warranties arising out of this document and excludes all liability for loss and damages arising there from. This publication is the copyrighted property of West USA Realty and/or its licensees. © 2024. All rights reserved.

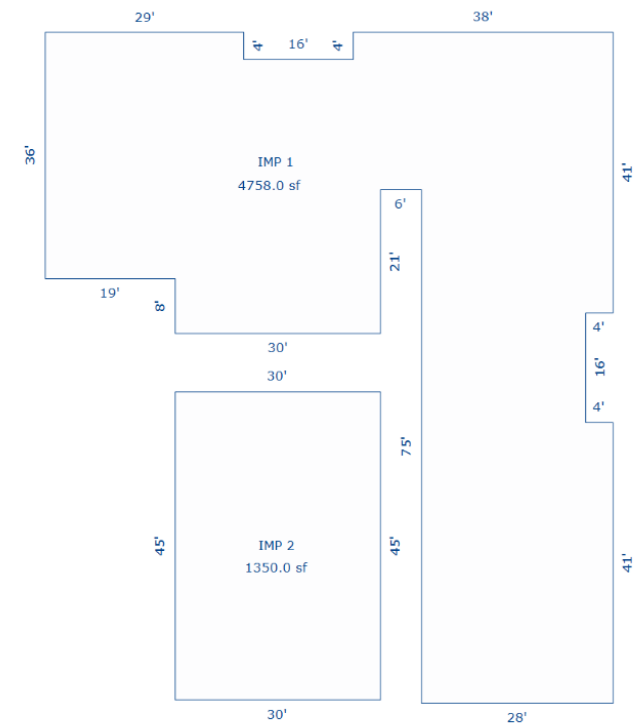
**14350 North 87th Street**  
**Suite 180**  
**Scottsdale, AZ 85260**

# SCOTTSDALE REDEVELOPMENT OPPORTUNITY

## ASSESSOR AERIAL PHOTO



**130-09-010 & 130-09-011**  
**3030 North 67th Place, 22,639 Square Feet**  
**Containing a Dental Building of ±6,169 Square Feet**  
**Price: \$1,700,000**



**PAUL BLUM, J.D., CCIM**  
**602.369.7575**  
[paul@blumroberts.com](mailto:paul@blumroberts.com)

**REBECCA ROBERTS**  
**602.791.6262**  
[rebecca@blumroberts.com](mailto:rebecca@blumroberts.com)

**BLUM-ROBERTS GROUP**



*Unlocking The Value of Real Estate*

This document/email has been prepared by West USA Realty Commercial Division for advertising and general information only. West USA Realty Commercial Division makes no guarantees, representations or warranties of any kind, expressed or implied, regarding the information including, but not limited to, warranties of content, accuracy and reliability. Any interested party should undertake their own inquiries as to the accuracy of the information. West USA Realty Commercial Division excludes unequivocally all inferred or implied terms, conditions and warranties arising out of this document and excludes all liability for loss and damages arising there from. This publication is the copyrighted property of West USA Realty and/or its licensees. © 2024. All rights reserved.

**14350 North 87th Street**  
**Suite 180**  
**Scottsdale, AZ 85260**

# SCOTTSDALE REDEVELOPMENT OPPORTUNITY AREA MAP



**PAUL BLUM, J.D., CCIM**  
**602.369.7575**  
[paul@blumroberts.com](mailto:paul@blumroberts.com)

**REBECCA ROBERTS**  
**602.791.6262**  
[rebecca@blumroberts.com](mailto:rebecca@blumroberts.com)

*Unlocking The Value of Real Estate*



**14350 North 87th Street**  
**Suite 180**  
**Scottsdale, AZ 85260**

This document/email has been prepared by West USA Realty Commercial Division for advertising and general information only. West USA Realty Commercial Division makes no guarantees, representations or warranties of any kind, expressed or implied, regarding the information including, but not limited to, warranties of content, accuracy and reliability. Any interested party should undertake their own inquiries as to the accuracy of the information. West USA Realty Commercial Division excludes unequivocally all inferred or implied terms, conditions and warranties arising out of this document and excludes all liability for loss and damages arising there from. This publication is the copyrighted property of West USA Realty and/or its licensees. © 2024. All rights reserved.