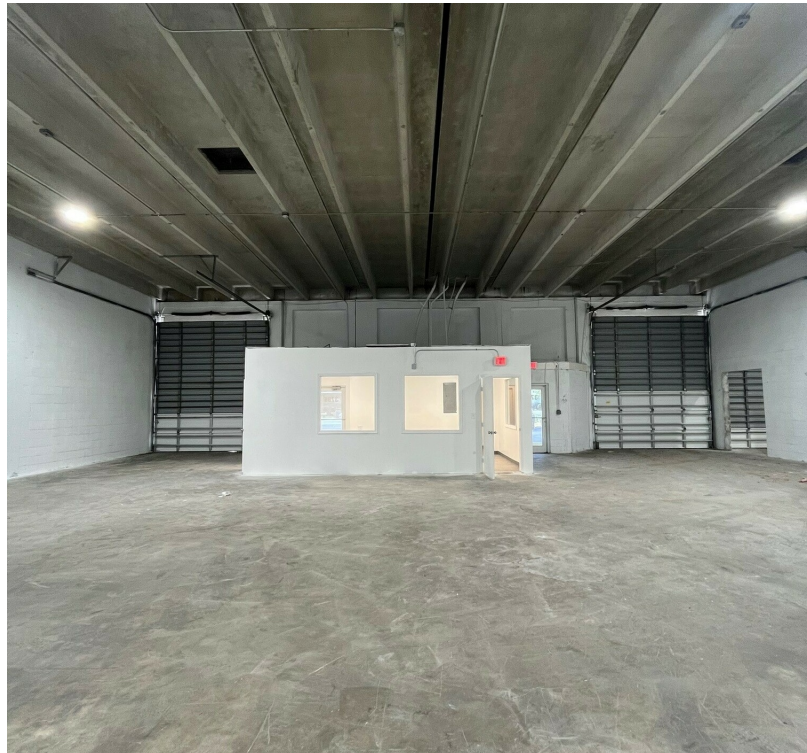


INDUSTRIAL PARK LAUDERHILL

3700-3798 NW 16TH STREET, LAUDERHILL, FL 33311

3786-3788 NW 16TH STREET



SPACE HIGHLIGHTS

- 3,060 SF newly renovated multi-bay warehouse
- 1 Fully air-conditioned 329 SF office
- 2 Grade level 12' x 14' overhead doors
- 18' clear ceiling height in warehouse
- LED lighting
- Hurricane impact doors
- 3 Phase power
- Ample parking
- Fronts NW 38th Street
- \$20 base rent PSF/Yr.



ANGIE WEAVER

Lauderdale Lakes and Lauderhill Manager
 Direct: 954.485.9200 | Cell: 917.645.2339
angie@levyrai.com

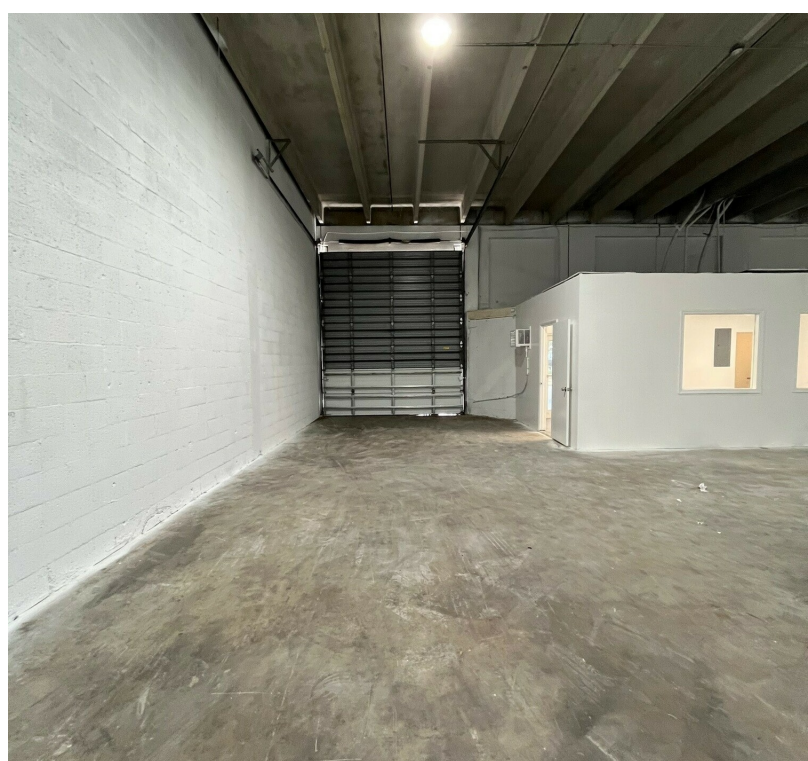
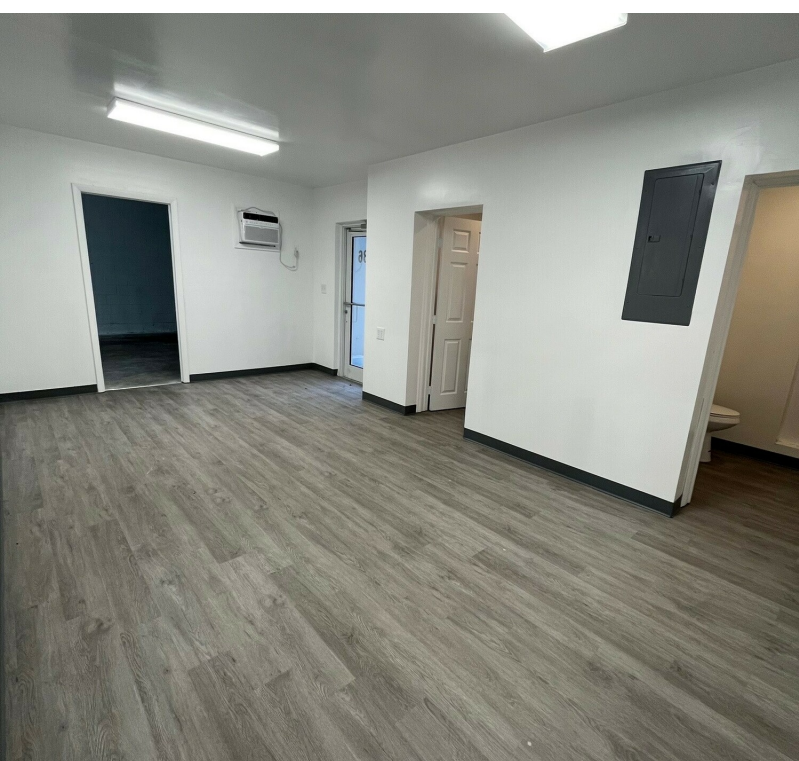
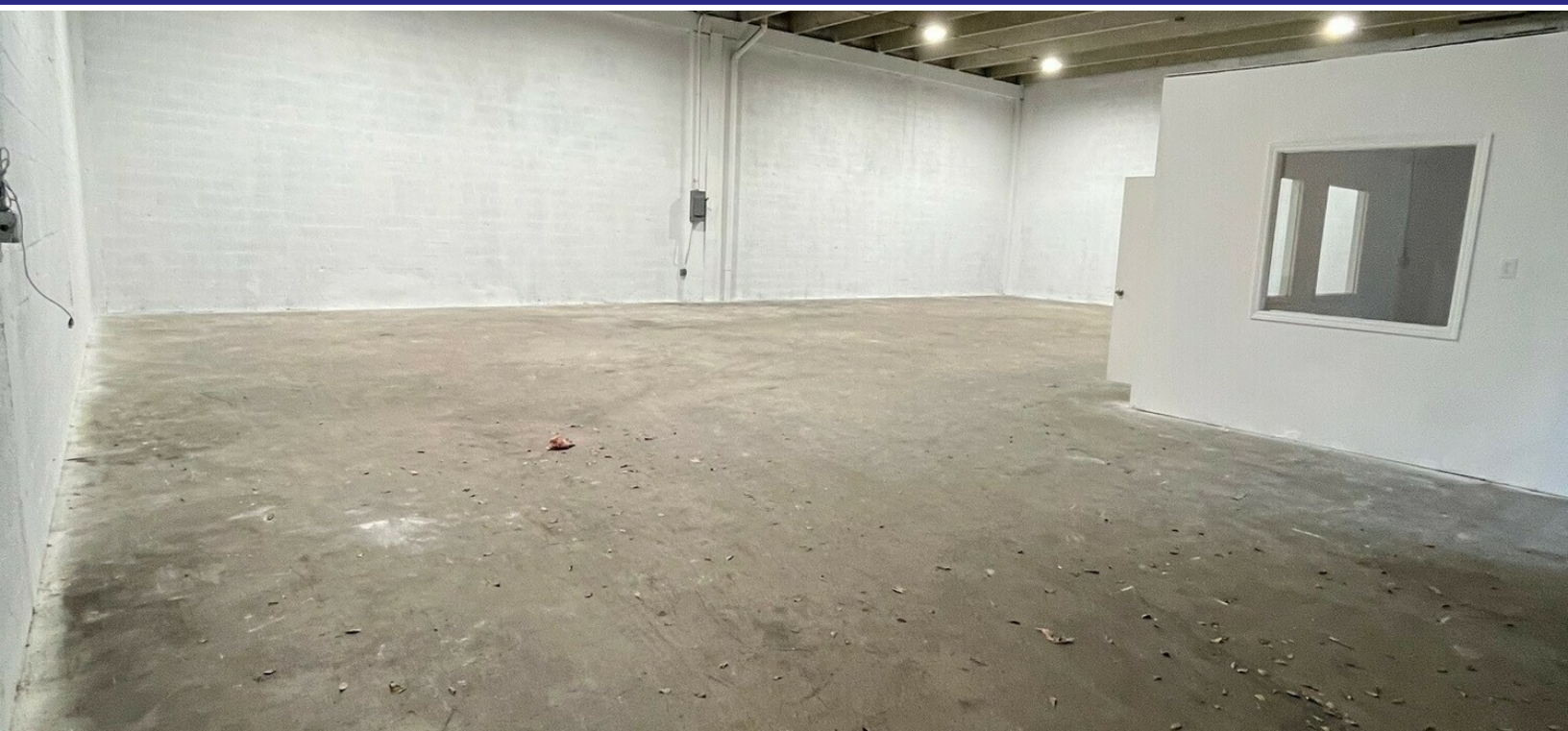


FOR LEASE

INDUSTRIAL PARK LAUDERHILL

3700-3798 NW 16TH STREET, LAUDERHILL, FL 33311

3786-3788 ADDITIONAL PHOTOS



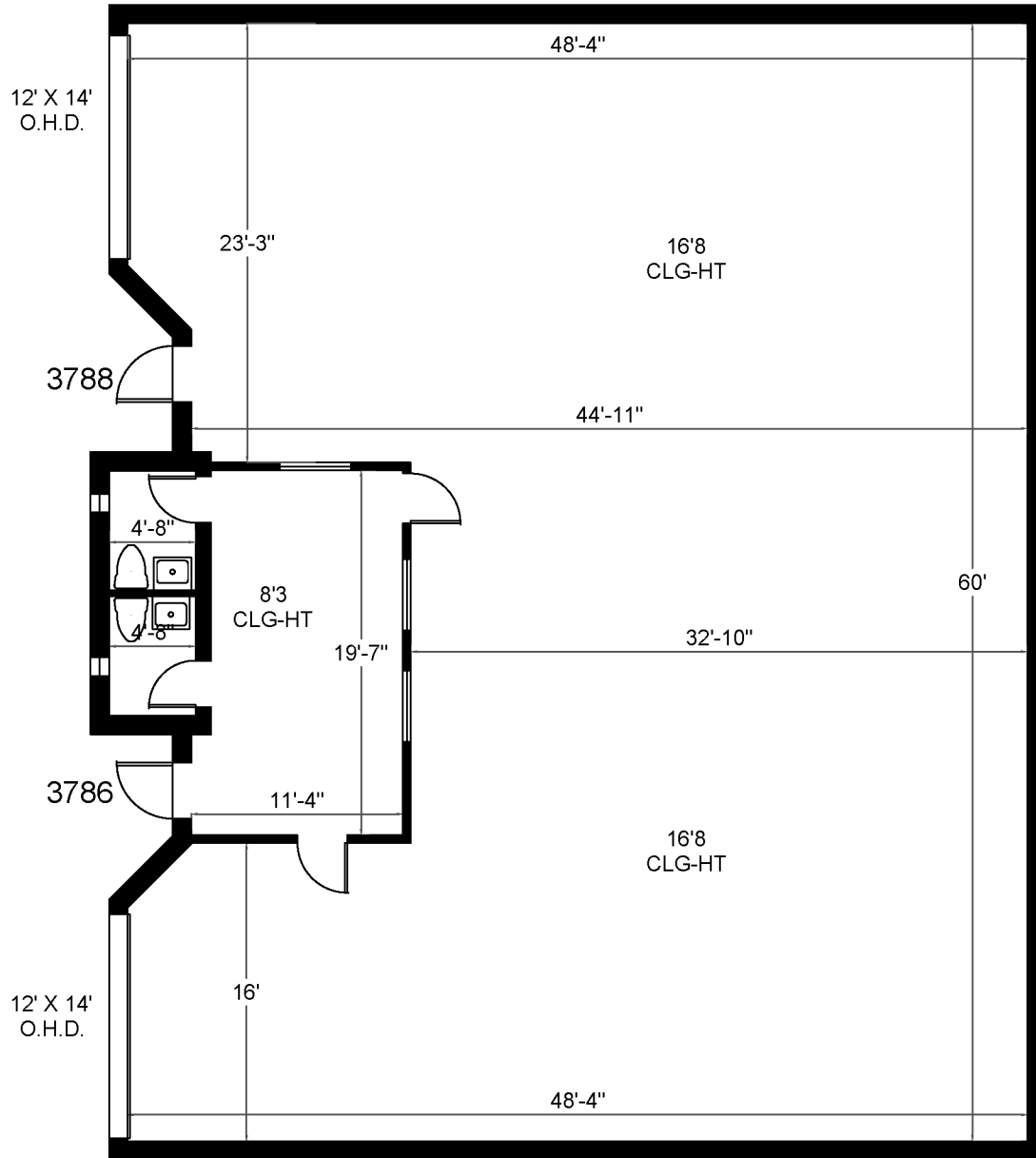
ANGIE WEAVER

Lauderdale Lakes and Lauderdale Manager
Direct: 954.485.9200 | Cell: 917.645.2339
angie@levyrai.com



INDUSTRIAL PARK LAUDERHILL

3786-3788 NW 16th Street | Lauderhill, FL 33311



Office - 329 Sq. Ft.

3,060 Rentable Sq. Ft.

www.LevyRealtyAdvisors.com



Angie Weaver | Property Manager | 917.645.2339 | Angie@levyrai.com
4901 NW 17th Way, Suite 103 | Ft. Lauderdale, FL 33309