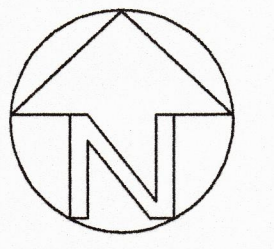


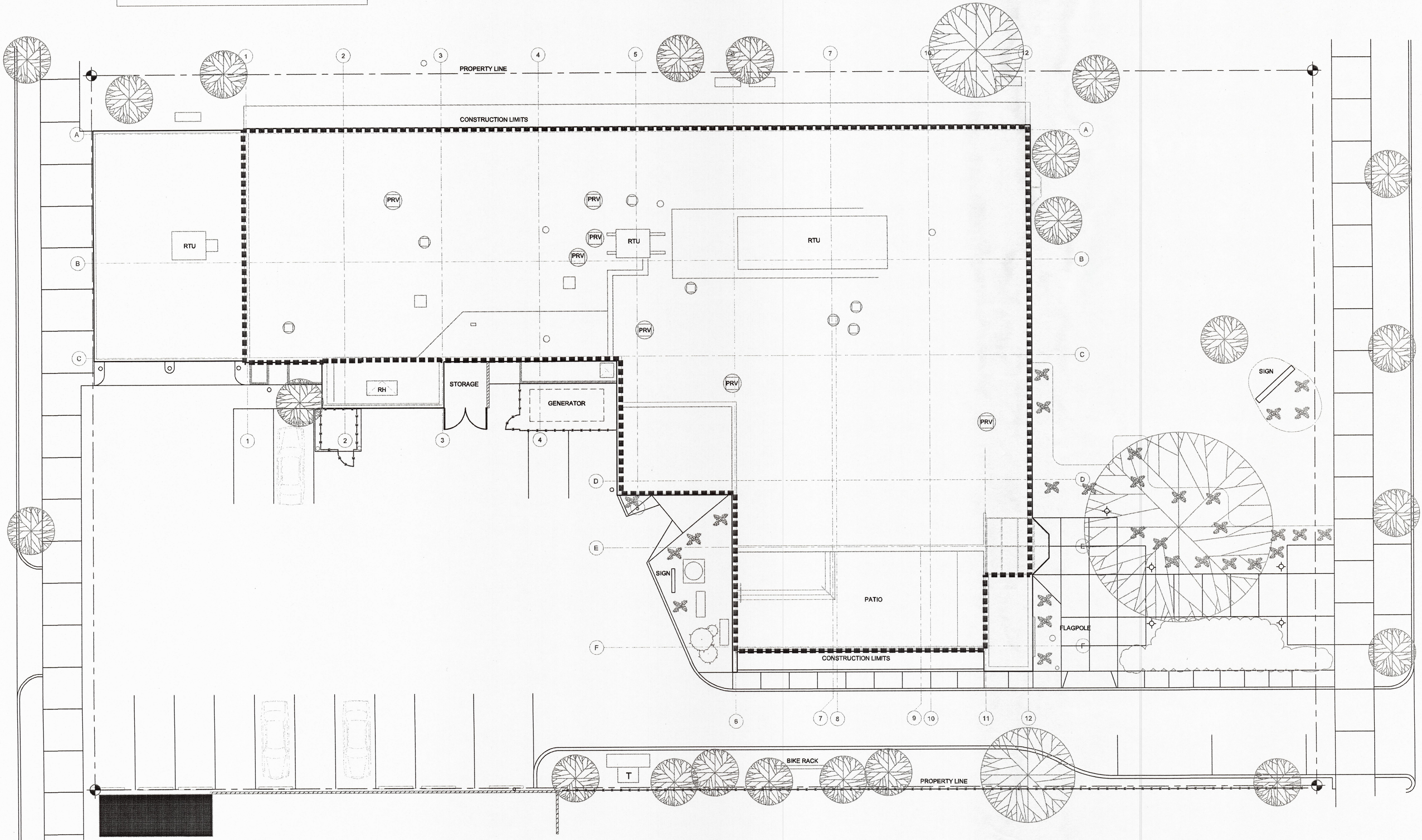
GENERAL NOTES:

1. CONSTRUCTION LIMIT: CONTRACTOR TO STAY WITHIN CONSTRUCTION LINE NOTED. RESTORE ALL AREAS THAT ARE DAMAGED BY CONSTRUCTION INCLUDING AREAS OUTSIDE OF CONSTRUCTION LIMIT.
2. CONSTRUCTION PARKING: WITHIN PROPERTY LINE ON EXISTING PAVING OR ON THE STREET.
3. EXISTING UTILITIES: GENERAL CONTRACTOR TO PROTECT UNDERGROUND ELECTRIC AND OTHER UTILITIES DURING CONSTRUCTION.



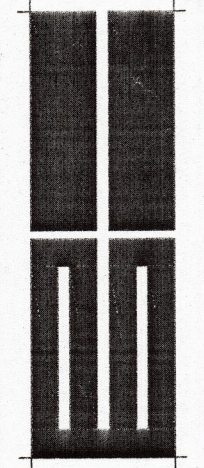
OAKLAND AVENUE

PARK AVENUE



1 SITE PLAN
A1.1 1" = 10'-0"

BUELOW & ASSOCIATES
AN ARCHITECTURAL SERVICES COMPANY
234 RICE STREET, SUITE 210
ST. PAUL, MINNESOTA (651) 483-6701



NO.	DATE	REVISION

January 24, 2007

SITE PLAN
Saint Mary's University of Minnesota
Park Avenue North Building Remodel
Minneapolis, Minnesota

0633

A1.1