

Golf View Plaza

AVAILABLE FOR LEASE

3200 E Silver Springs Blvd, Ocala, Florida 34470

10,000 - 43,561
RSF Available

Premier Class A
Medical/Office

Immediate
Availabilities

Branding
Opportunities





About The Campus

3200 E. Silver Springs Blvd. is a well-located medical office building offering flexible leasing opportunities along a high-visibility corridor. The property provides existing medical space, strong traffic exposure, signage availability, and ease of access, ideal for a regional healthcare system or institutional medical user.

- Total Building Area: 43,561 SF
- Total Stories: 2
- Year Built: 2002
- Class: A
- Parking: 114 Spaces



PROPERTY OVERVIEW

3200 E. Silver Springs Boulevard is a well-positioned medical office building offering flexible suite sizes from $\pm 10,000$ to 43,500 RSF to accommodate a range of healthcare users.

The property features adaptable layouts, strong building infrastructure, and a design that supports efficient patient flow and daily operations. With ample on-site parking and existing medical buildout, the building is well-suited for both expanding practices and larger healthcare systems seeking turnkey or scalable space.

43,561 SF

Total Building Size

BUILDING FEATURES

Designed for patient convenience and provider visibility, the building features street frontage, ample surface parking, and prominent branding opportunities.



STRONG VISIBILITY

The property offers high-profile visibility along E. Silver Springs Boulevard, making it perfect for branding opportunities.



SURFACE PARKING

The property offers 114 surface parking spaces, supporting convenient access for patients, visitors, and staff.



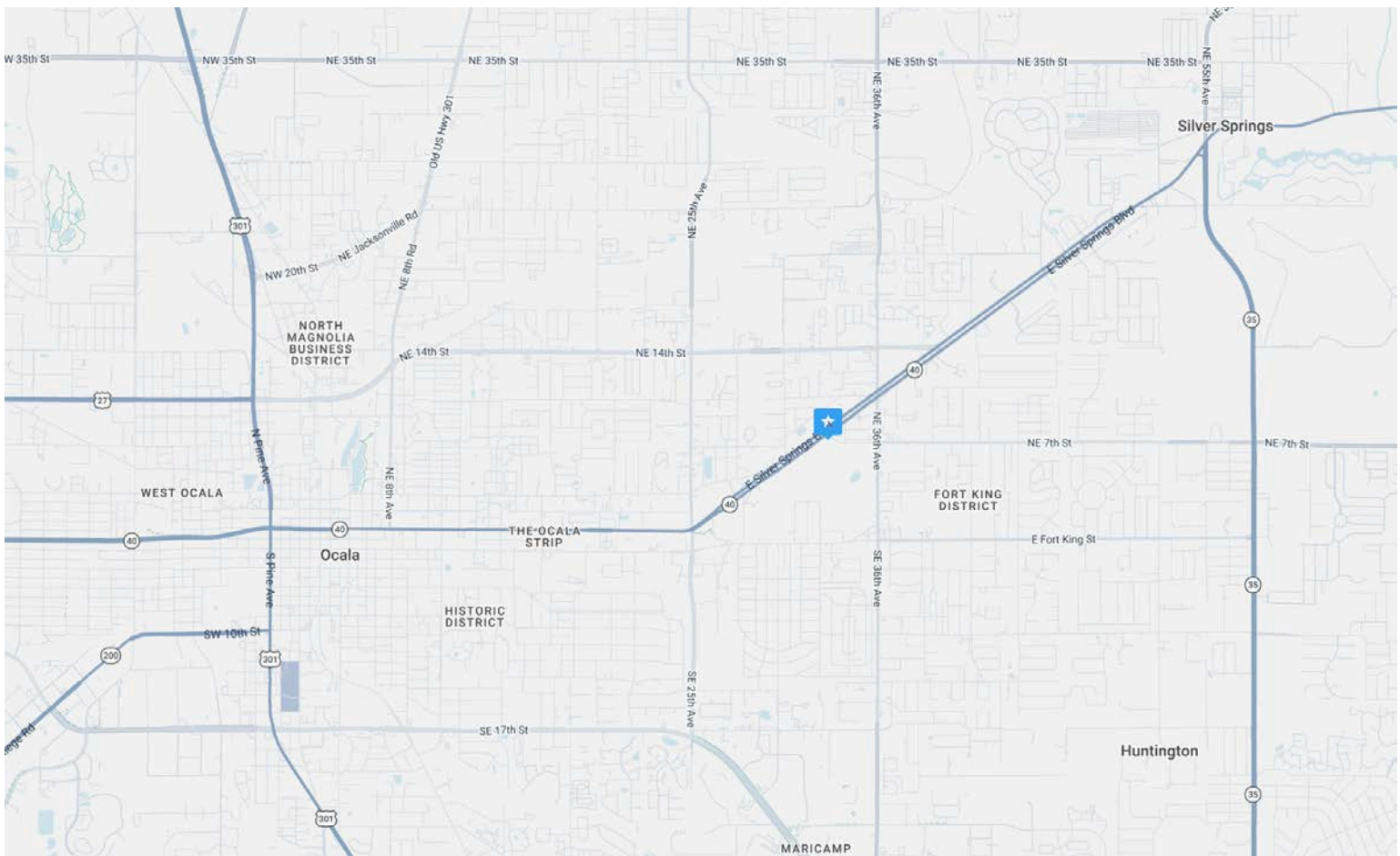
ACCESSIBILITY

The building is wheelchair accessible and designed to support patient circulation throughout.

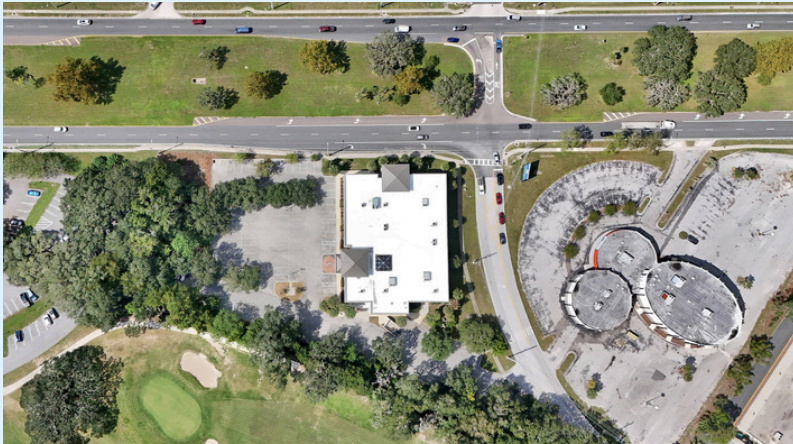
LOCATION OVERVIEW

Situated along E. Silver Springs Boulevard, one of Ocala's primary commercial corridors, the property benefits from strong traffic exposure and convenient regional access.

The surrounding area includes established residential neighborhoods and complementary healthcare providers, supporting a consistent patient base and referral network. Its central location and high visibility make it an ideal destination for medical users seeking accessibility and long-term presence within the Ocala market.



3200 E SILVER SPRINGS BLVD, OCALA, FLORIDA 34470



Golf View Plaza

AVAILABLE FOR LEASE

3200 E Silver Springs Blvd, Ocala, Florida 34470



DANIEL TOPPING
Healthcare Advisory Services

404.226.0297
daniel.topping@transwestern.com

JOHN V. LOPEZ, CCIM, RPA
Healthcare Advisory Services

404.842.6562
john.lopez@transwestern.com