

WAREHOUSE SPACE FOR LEASE
2222 E BROADWAY ST

North Little Rock, AR 72114

PRESENTED BY:

NATHAN HUTCHINS

O: 501.912.3660

nathan.hutchins@svn.com

AR #sa00063530



PROPERTY SUMMARY



OFFERING SUMMARY

LEASE RATE: \$4.51 SF/yr (MG)

MONTHLY RATE: \$8000.00

BUILDING SIZE: 21,284 SF

LOT SIZE: 1.64 Acres

PROPERTY OVERVIEW

Large warehouse space with office/retail area that is centrally located in the North Little Rock industrial corridor.

PROPERTY HIGHLIGHTS

- Centrally located near industrial area/ with large marque sign for visibility.
- Extra lot available for overflow parking.
- Ground level overhead doors for easy access to all parts of the warehouse.
- Separated/ Walled area for over stock and or separation of stock.
- Loft area for additional storage not calculated in total square footage.
- Fully tiled area perfect for display retail area and or additional office space.
- Two large private office one with display window viewing area into the warehouse for monitoring.
- Two office bathrooms along with two warehouse bathrooms.
- Overhead area for covered parking and or drive in area.
- Ideal for large warehouse location for distribution.
- Ceiling height peak is 14'.
- Ample room for Dock Height lift.

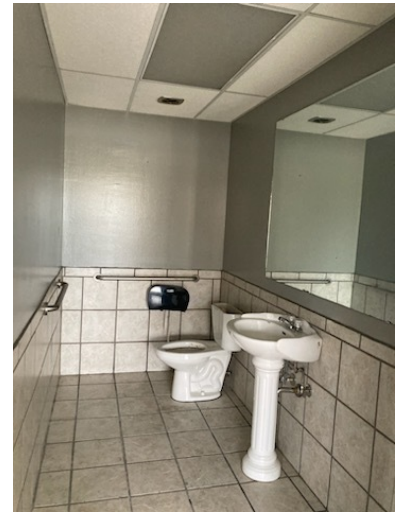
NATHAN HUTCHINS

O: 501.912.3660

nathan.hutchins@svn.com

AR #sa00063530

ADDITIONAL PHOTOS



NATHAN HUTCHINS

O: 501.912.3660

nathan.hutchins@svn.com

AR #sa00063530

LOCATION MAP



Imagery ©2023 , Landsat / Copernicus, Maxar Technologies, Pulaski Area GIS, State of Arkansas, U.S. Geological Survey, USDA/FPAC/GEO

NATHAN HUTCHINS

O: 501.912.3660

nathan.hutchins@svn.com

AR #sa00063530