

# BUILD TO SUIT OFFICE SPACE FOR LEASE

## 34 W. Main St. Somerville, NJ

### Somerset County



### **BUILDING DESCRIPTION**

- **Great Opportunity to design your own office suite in Award Winning Downtown Somerville!**
- **The last remaining space, 2,758 SF 3<sup>rd</sup> Floor in this mixed-use elevator building**
- **New ownership has renovated this property from top to bottom and will provide a turn-key suite**
- **Located 2 blocks from NJ Transit Somerville Station and Post Office in the Heart of Downtown Somerville**
- **Walking Distance to the County Court House/Administrative Complex**
- **Minutes to Route 22, 202/206, I-287 and I-78**
- **Offered at: \$22. PSF NNN**



Timothy P. Deluccia

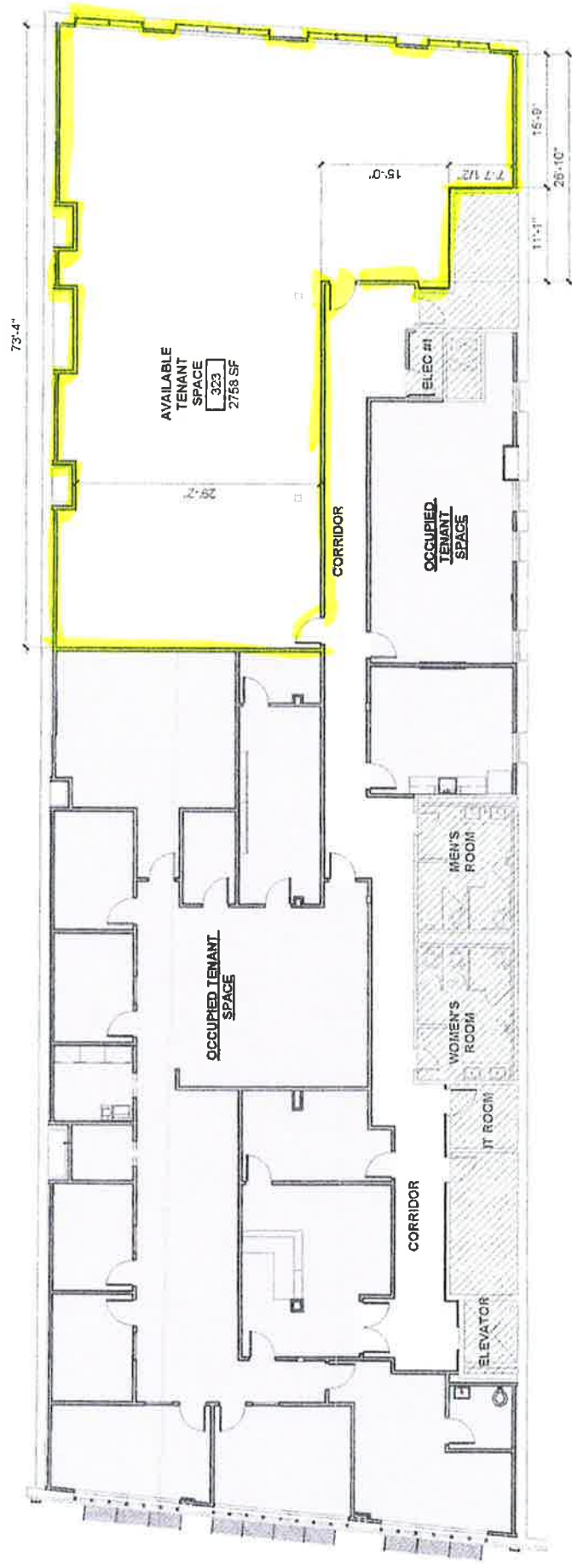
Broker Associate

908-938-6405

[tim@delucciacommercialgroup.com](mailto:tim@delucciacommercialgroup.com)

Commercial Sales/Leasing

  
BERKSHIRE  
HATHAWAY  
HomeServices  
New Jersey Properties



34 WEST MAIN STREET  
 AVAILABLE TENANT SPACE  
 09.13.22



THIRD FLOOR PLAN  
 NO SCALE