

2352 Main Street

GPS DIRECTIONS: 36 KNOX TRAIL

CONCORD, MA 01742



THREE-STORY OFFICE BUILDING ON THE BANKS OF THE ASSABET RIVER CONVENIENTLY LOCATED JUST OFF ROUTE 62 AND IS MINUTES FROM I-495, ROUTE 2 AND ROUTE 65. GREAT SPACES AVAILABLE FOR PROFESSIONAL OFFICES AND SERVICE BUSINESSES.

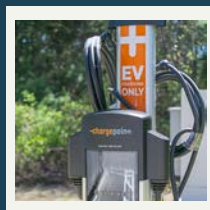
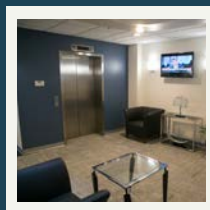
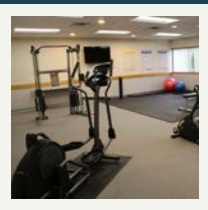
O'BRIEN COMMERCIAL PROPERTIES
336 BAKER AVENUE - CONCORD, MA 01472
978.369.5500 . OBRIENCOMMERCIAL.COM

CONTACT
KEITH GURTLER
978.346.3098
keith@obriencommercial.com

2352 Main Street

GPS DIRECTIONS: 36 KNOX TRAIL

CONCORD, MA 01742



**Fitness room, break room,
new EV charging station and
parking for 190 on 6 wooded
acres with a pond.**

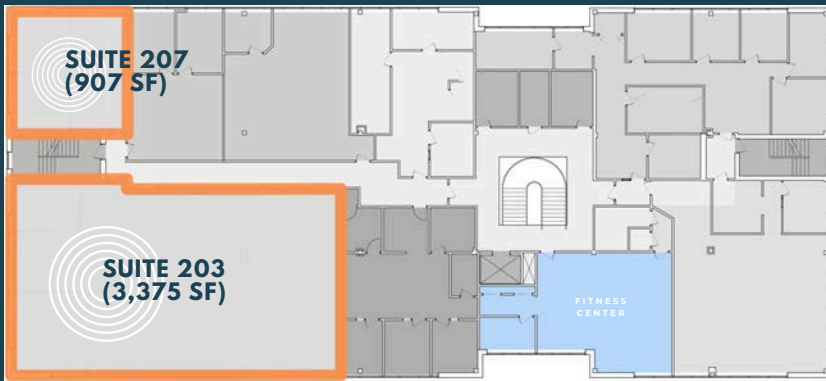
O'BRIEN COMMERCIAL PROPERTIES
336 BAKER AVENUE - CONCORD, MA 01472
978.369.5500 . OBRIENCOMMERCIAL.COM

CONTACT
KEITH GURTLE
978.346.3098
keith@obriencommercial.com

2352 Main Street

GPS DIRECTIONS: 36 KNOX TRAIL

CONCORD, MA 01742



Year Built: 1988
Total Size: 44,286 SF
Land: 6 AC
Zone: Business
Levels: 3 Stories
Parking: 190 Spaces
Elevators: 1
Lavatories: 2/Per Floor
HVAC: New Air to Air
Construction: Steel/Brick
Fire Suppression: Wet



VIEW LISTING

3 SPACES AVAILABLE 5,142 SF. TOTAL

O'BRIEN COMMERCIAL PROPERTIES
336 BAKER AVENUE - CONCORD, MA 01472
978.369.5500 . OBRIENCOMMERCIAL.COM

CONTACT
KEITH GURTLE
978.346.3098
keith@obriencommercial.com

2352 Main Street

GPS DIRECTIONS: 36 KNOX TRAIL

CONCORD, MA 01742

COMMERCIAL
O'BRIEN
PROPERTIES, INC.



**POWDER
MILL ROAD**



**POWDER
MILL PLAZA**



**2352 MAIN
STREET**

O'BRIEN COMMERCIAL PROPERTIES
336 BAKER AVENUE - CONCORD, MA 01472
978.369.5500 . OBRIENCOMMERCIAL.COM

CONTACT
KEITH GURTLE
978.346.3098
keith@obriencommercial.com