

AVAILABLE

**The
TEMPLES
Company**

(912) 538-7000

173.273 Acres – Lyons, GA

1687 N. US Hwy #1

Lyons, GA 30436

(Latitude, Longitude)

(32.24620, -82.32460)

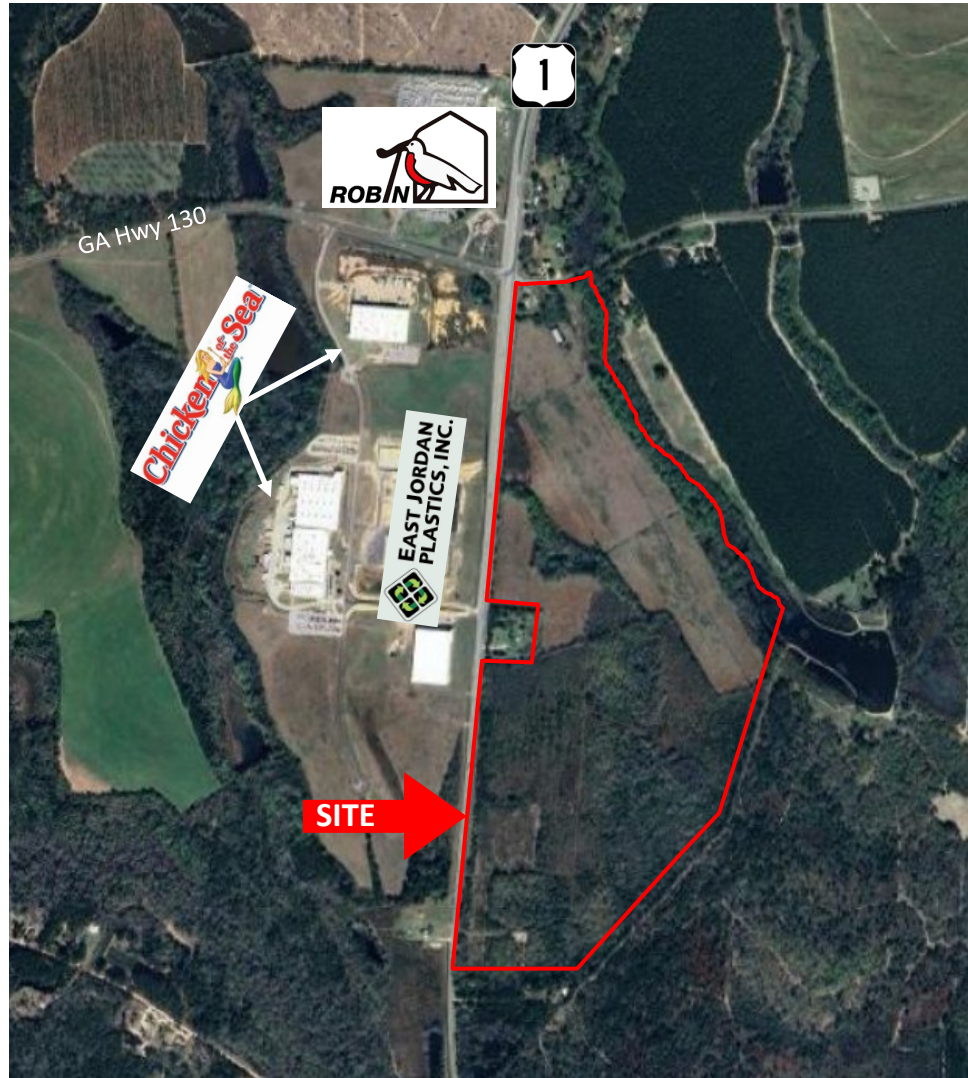
AVAILABLE:

173.273 acres

PRICE:

\$1,600,000.00

- Located at North intersection of US #1 and US #1 Bypass across from Toombs Corporate Center.
- Owner willing to subdivide.
- Located on US #1, 17 miles to I-16 and 3 miles to US 280.



DEMOGRAPHICS:

	10 miles	20 miles
2025 Population:	26,745	63,791
2025 Households:	10,437	23,564
2025 Median Household Income:	\$53,430	\$51,654

TRAFFIC COUNTS:

Street:	Daily Count
US #1 (North of Site):	5,480
US #1 (South of Site):	4,670

***Please contact our office for
additional information.***

The Temples Company

PO Box 405

301 Mosley Street (30474)

Vidalia, GA 30475

(912) 538-7000

www.thetemplescompany.com

* This information has been obtained from sources believed reliable. While we do not doubt its accuracy, we have not verified it and make no guarantee or representation about the information. It is your responsibility to independently confirm its accuracy and completeness. 2518SEP