

2356 GOLD MEADOW WAY
GOLD RIVER | CA

OFFICE SPACE FOR LEASE





Property Highlights

AVAILABILITIES:

- **Suite 130:** ±3,679 RSF
- **Suite 201:** ±4,536 RSF

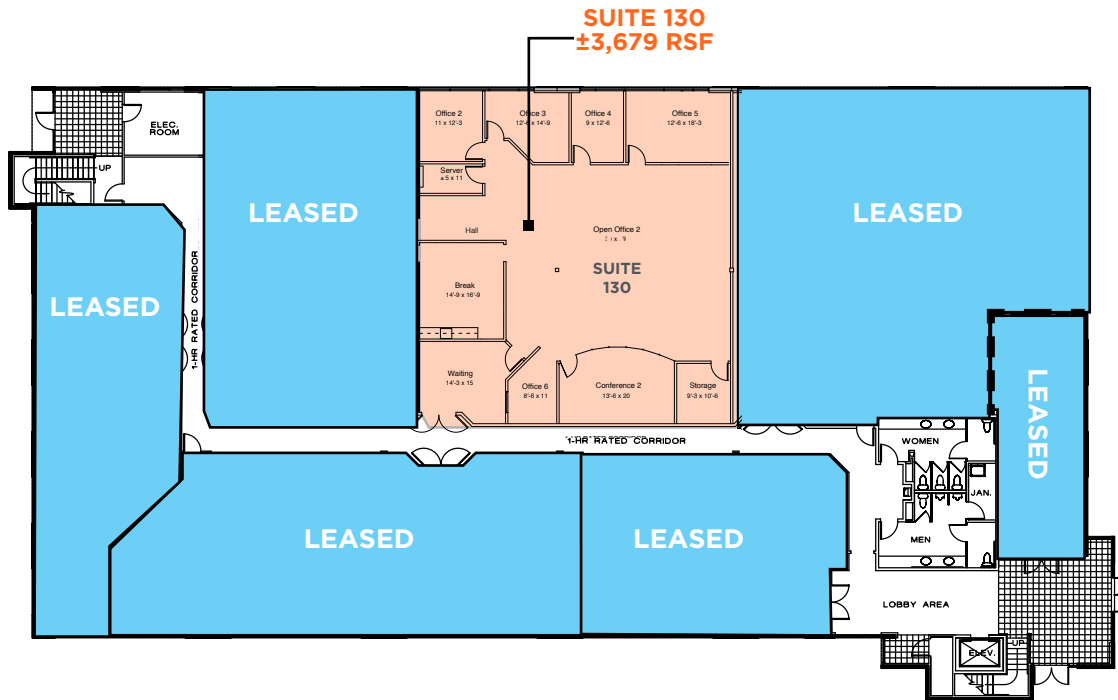
LEASE RATES:

- \$1.59/SF, FSG
- \$1.69/SF, FSG

-
- Plug and play suites available
 - Professional Office Campus with Park Environment
 - Excellent Window Lines and Upgraded Common Area Finishes
 - Convenient Access Off Highway 50 at Sunrise Blvd or Hazel Ave
 - Parking Ratio: 4.1/1,000 SF

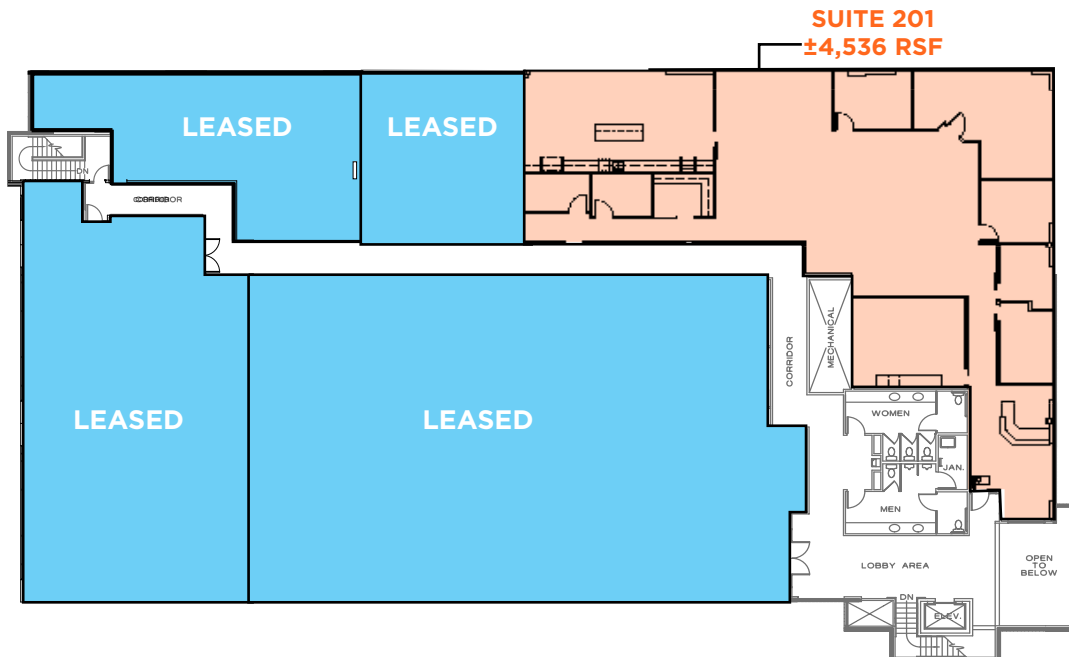
1st Floor

SUITE 130

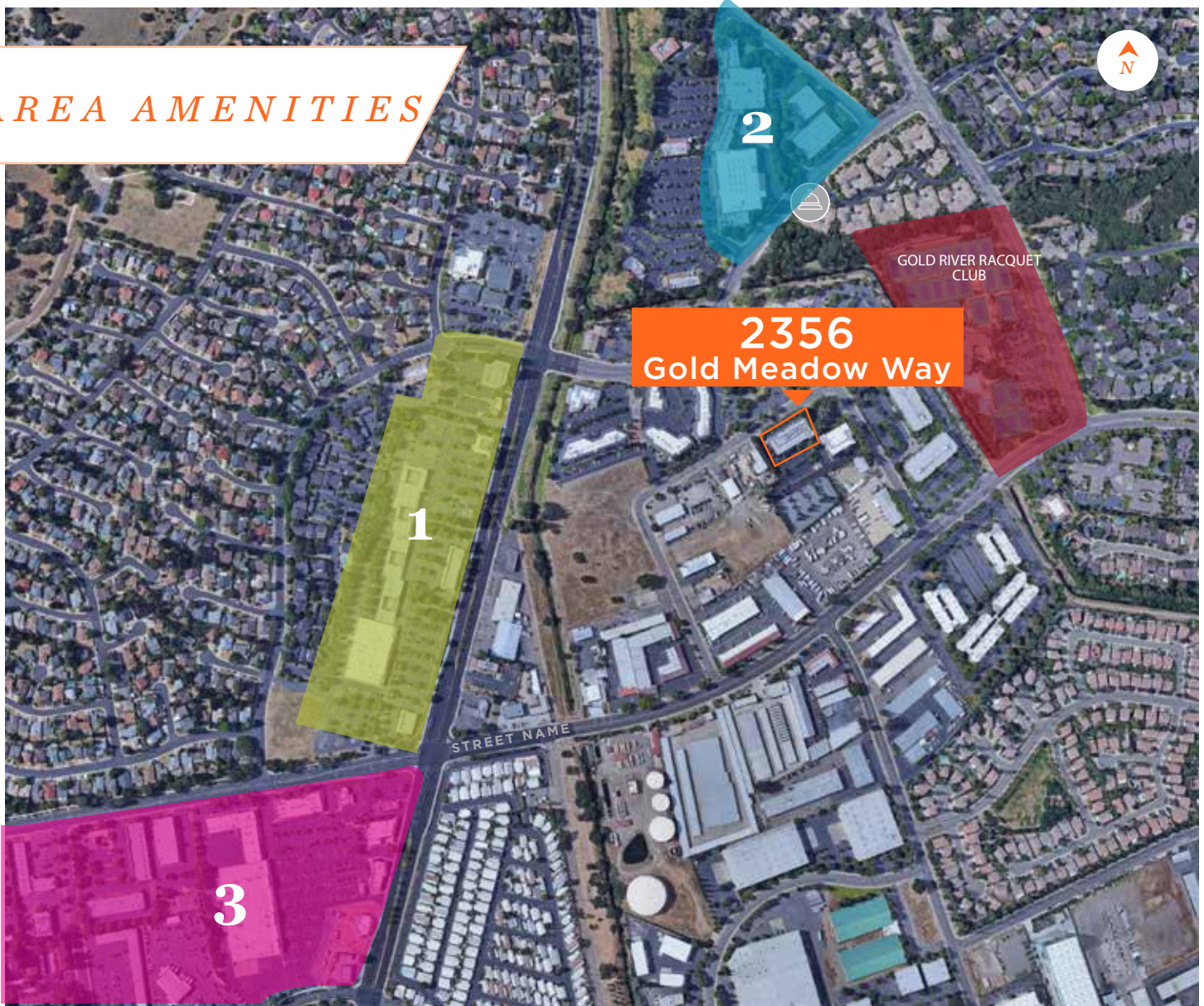


2nd Floor

SUITE 201



AREA AMENITIES



1. SHOPPING CENTER

24 FITNESS	DOMINO'S PIZZA
ROUND TABLE PIZZA	IHOP
ADALBERTO'S	MEN'S WAREHOUSE
SUBWAY	SKY SUSHI

2. GOLD RIVER RETAIL CENTER

BELAIR	STARBUCKS
APPLE BEES	OUTBACK STEAK HOUSE
WELLS FARGO	RUBIOS
RITE AID	RALEY'S

3. SHOPPING CENTER

CHICK-FIL-A	CARL'S JR
DOLLAR TREE	THAI SMILE
SPORTSMAN'S WAREHOUSE	IN-N-OUT
DICKEY'S BBQ PIT	I LOVE TERIYAKI
STARBUCKS	CALIFORNIA FAMILY FITNESS

CONTACT INFORMATION

CHRIS SCHWARZE

Executive Director
 +1 916 288 4803
 chris.schwarze@cushwake.com
 LIC #01291261

ZACH MOSLE, CCIM

Director
 +1 916 329 1543
 zach.mosle@cushwake.com
 LIC #01924595



400 Capitol Mall, Suite 1800
 Sacramento, California 95814
 main +1 916 288 4800
 cushmanwakefield.com

©2020 Cushman & Wakefield. All rights reserved. The information contained in this communication is strictly confidential. This information has been obtained from sources believed to be reliable but has not been verified. No warranty or representation, express or implied, is made as to the condition of the property (or properties) referenced herein or as to the accuracy or completeness of the information contained herein, and same is submitted subject to errors, omissions, change of price, rental or other conditions, withdrawal without notice, and to any special listing conditions imposed by the property owner(s). Any projections, opinions or estimates are subject to uncertainty and do not signify current or future property performance.