

COMMERCIAL REAL ESTATE SERVICES

INVESTMENT SALES AND LEASING

**BERKSHIRE
HATHAWAY**
HOMESERVICES

RW TOWNE
REALTY

COMMERCIAL DIVISION



KEY FEATURES

- Parcel 28A8-6-1 comprising +/- 2.9 acres, Zoned B-1 with access from E. Main St. | \$60,000
- Parcel 28A8-6-3 comprising +/- 7.8 acres, Zoned B-1 with excellent frontage on Rte. 460 adjacent Hardee's and Wawa | \$550,000
- Parcels 28A8-6-4, 4A and 10A (3) comprising +/- 23.54 acres, Zoned R-4 and R-1 | \$345,000

LAND

FOR SALE

28 South County Drive | Waverly, Virginia 23890

Three separate commercial and residential land opportunities in the town of Waverly, Sussex County, Virginia located along on the US-460 corridor between Petersburg and Suffolk/US - 258.



To Learn More, Contact:

JANET MOORE, CCIM

757.645.4500

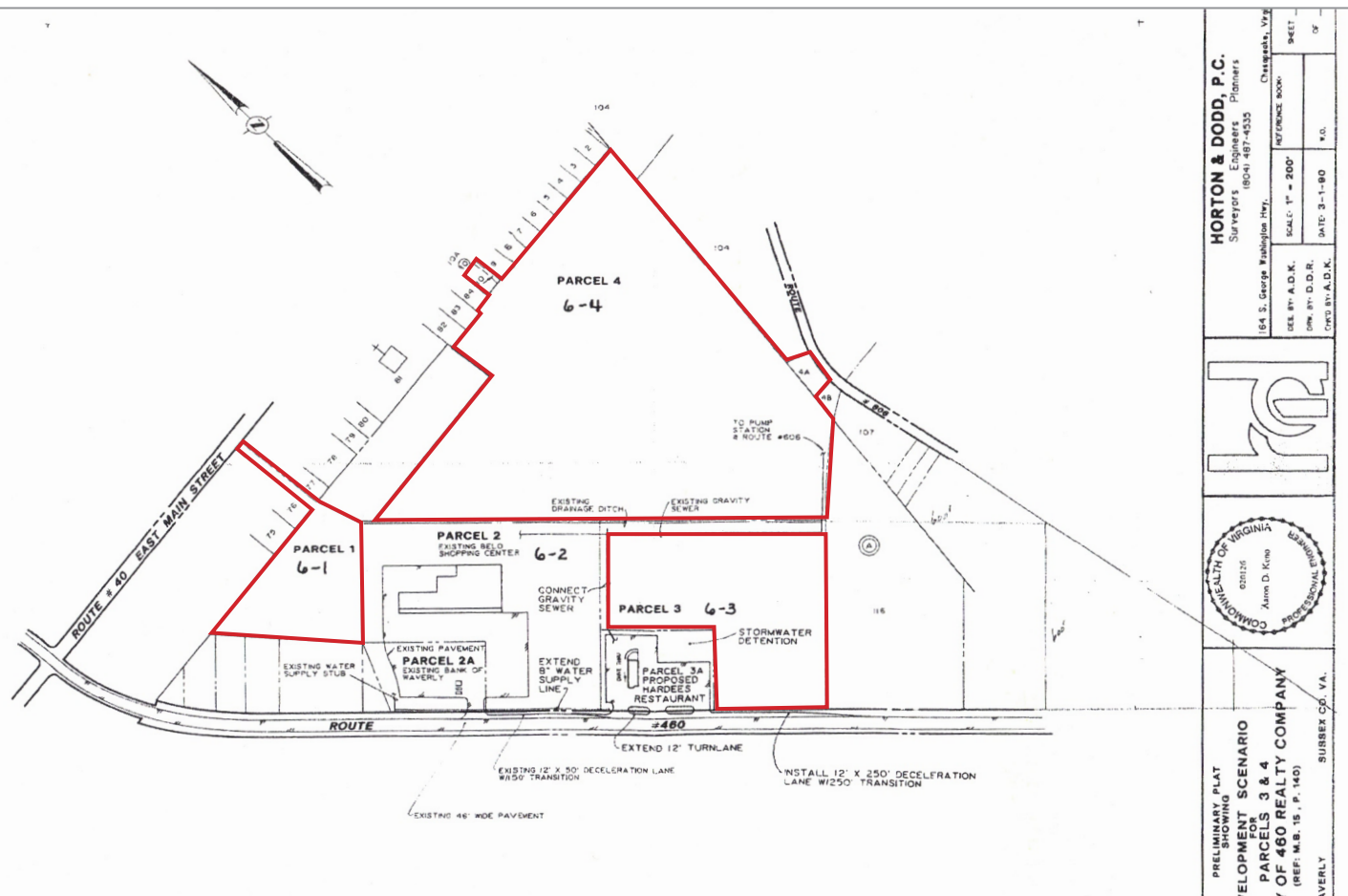
janet.moore@rwtowne.com

janetmooreccim.com

5372 Discovery Park Blvd, Ste 101, Williamsburg, VA 23188 | janetmooreccim.com | 757.645.4500

COMMERCIAL DIVISION

FOR SALE



Nearby Tenants

5372 Discovery Park Blvd, Ste 101, Williamsburg, VA 23188 | janetmooreccim.com | 757.645.4500

COMMERCIAL REAL ESTATE SERVICES

INVESTMENT SALES AND LEASING

**BERKSHIRE
HATHAWAY**
HOMESERVICES

RW TOWNE
REALTY

COMMERCIAL DIVISION

LAND

FOR SALE



LOCATION FEATURES

- S. County Dr. (US - 460) - key regional traffic artery connecting North to I 85 and South to Hampton Roads
- All parcels have proximity to the new Wawa (under construction), Hardee's, Dollar Tree, ABC, PRIMIS Bank, Jackson Hewitt, and more
- Traffic Count: 11,200 VPD

DEMOGRAPHICS

	5 MI	10 MI
TOTAL POPULATION	2,887	3,388
MEDIAN INCOME	\$71,816	\$77,984

5372 Discovery Park Blvd, Ste 101, Williamsburg, VA 23188 | Office: 757.220.9500



No warranty or representation, express or implied, is made to the accuracy or completeness of the information contained herein, and same is submitted subject to errors, omissions, change of price, rental or other conditions, withdrawal without notice, and to any listing conditions imposed by the property owner (s). As applicable we make no representation as to the condition of the property (or properties) in question. I Exclusive Agent Representing the Seller. All information is believed to be accurate but is not warranted and is solely a guide to prospective purchasers who should satisfy themselves by inspection or otherwise as to the correctness of this information. ©2026 BHH Affiliates, LLC. An independently owned and operated franchisee of BHH Affiliates, LLC. Berkshire Hathaway HomeServices and the Berkshire Hathaway HomeServices symbol are registered service marks of Columbia Insurance Company, a Berkshire Hathaway affiliate. Equal Housing Opportunity. Berkshire Hathaway HomeServices RW Towne Realty is an affiliate of TowneBank and licensed in the states of Virginia and North Carolina.