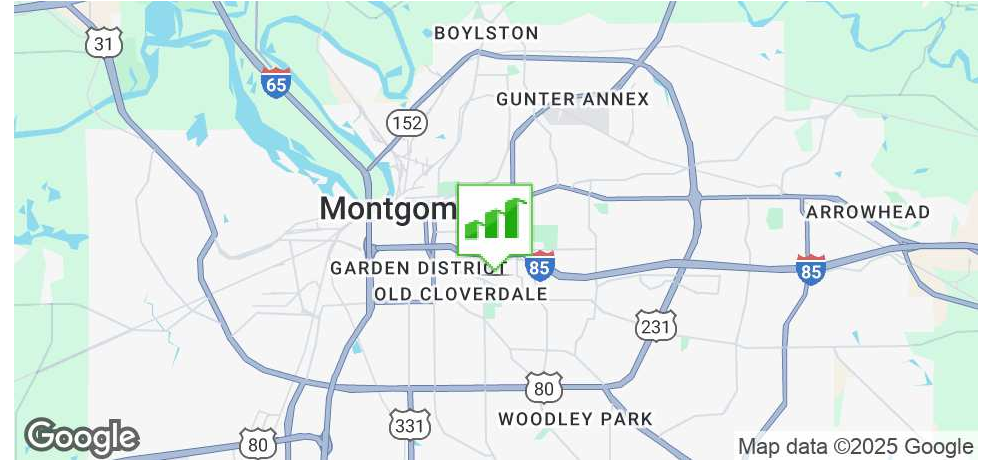


2005 N COUNTRY CLUB DR

MONTGOMERY, AL 36106

Executive Summary



OFFERING SUMMARY

Sale Price: \$750,000

Lot Size: ±0.53 Acres

Year Built: 1875

Building Size:
Building 1: ±25,940 SF
Building 2: ±4,940 SF
Building 3: ±4,110 SF

Zoning: INST

Price / SF: \$34.48

PROPERTY HIGHLIGHTS

- Former campus of the St. James School in Montgomery
- Post-Bellum home converted into beautiful reception center with meeting rooms
- Zoned INST (Institutional Zone)- Nearby businesses include a Senior Living Apartment Complex and a Skilled Nursing Facility
- 22 classrooms
- Quiet cul-de-sac location
- Floors: concrete, hardwood, tile, & terrazzo
- Less than 1 mile from Jackson Hospital
- ± 0.5 miles from The Montgomery Country Club: Est. in 1903, MCC is an immaculate golf course, a par-72, 18-hole masterpiece designed by renowned architect Perry Maxwell. Stretching over 6,800 yards, this challenging course boasts meticulously manicured fairways and greens that provide a true test of skill for golfers of all levels.
- ± 1.3 miles from Alabama State University (ASU): With a 2023 student enrollment ± 5,875 of and ± 760 total employees. ASU is an accredited University and offers over 60 undergraduate and graduate degree programs.
- ± 1.5 miles from I-65

GENE CODY, CCIM, SIOR

334.386.2441
gcody@mcrmpm.com

JON MASTERS, CCIM

334.387.2724
jmasters@mcrmpm.com

MOORE COMPANY REALTY

312 Catoma Street, Suite 200, Montgomery, AL 36104
334.262.1958 | moorecompanyrealty.com



2005 N COUNTRY CLUB DR

MONTGOMERY, AL 36106

Additional Photos



GENE CODY, CCIM, SIOR

334.386.2441
gcody@mcrmpm.com

JON MASTERS, CCIM

334.387.2724
Jmasters@mcrmpm.com

MOORE COMPANY REALTY

312 Catoma Street, Suite 200, Montgomery, AL 36104
334.262.1958 | moorecompanyrealty.com



2005 N COUNTRY CLUB DR

MONTGOMERY, AL 36106

Additional Photos



GENE CODY, CCIM, SIOR

334.386.2441
gcody@mcrmpm.com

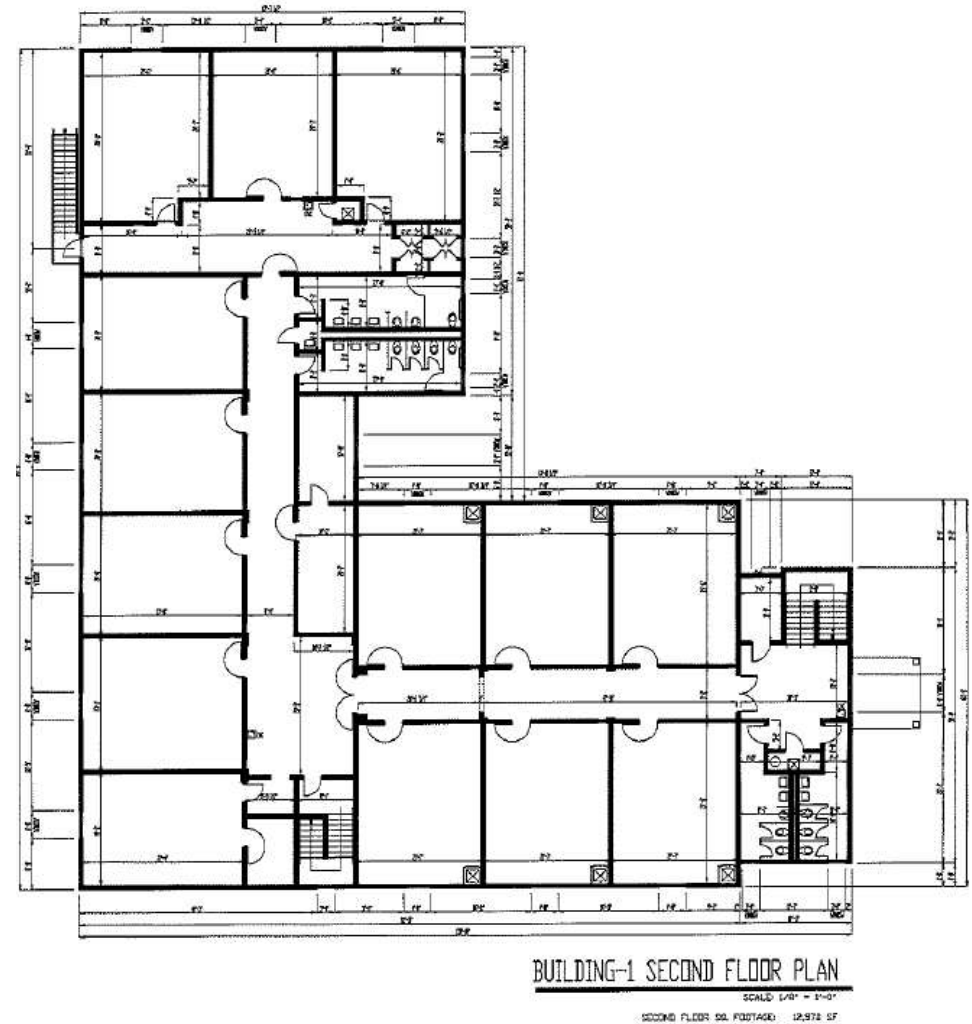
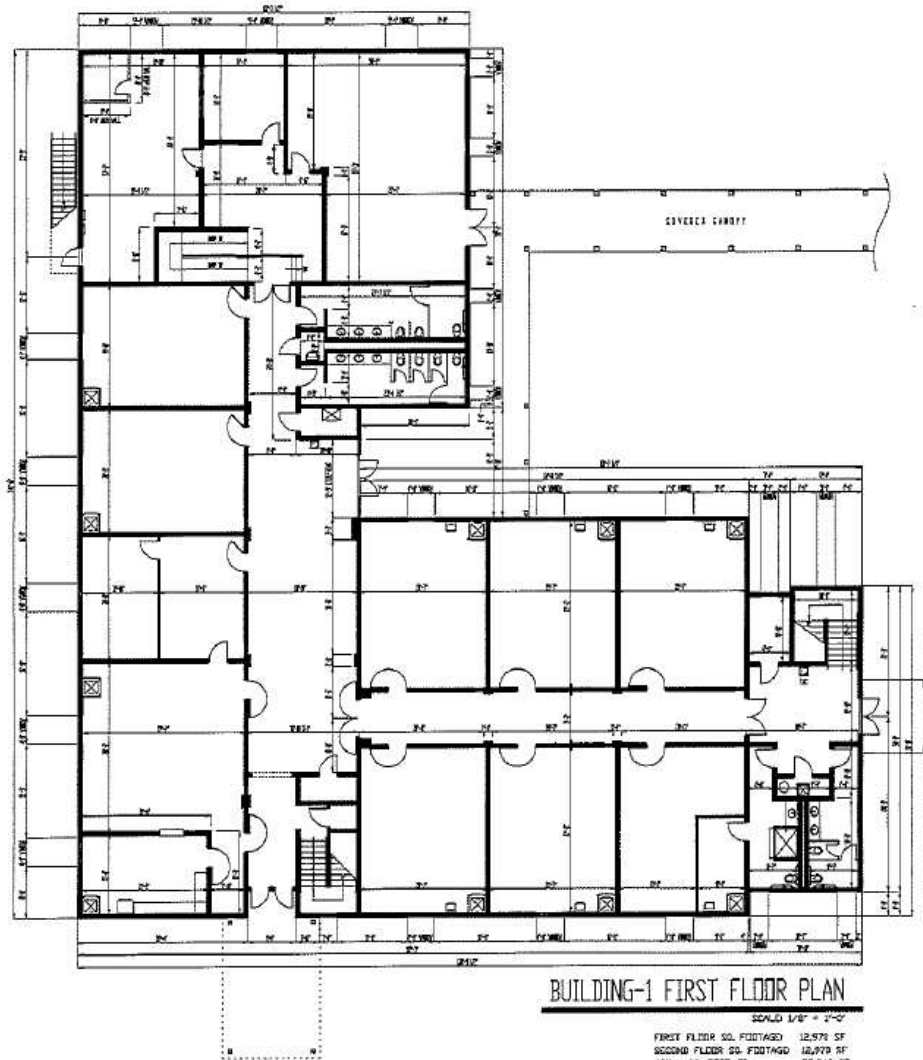
JON MASTERS, CCIM

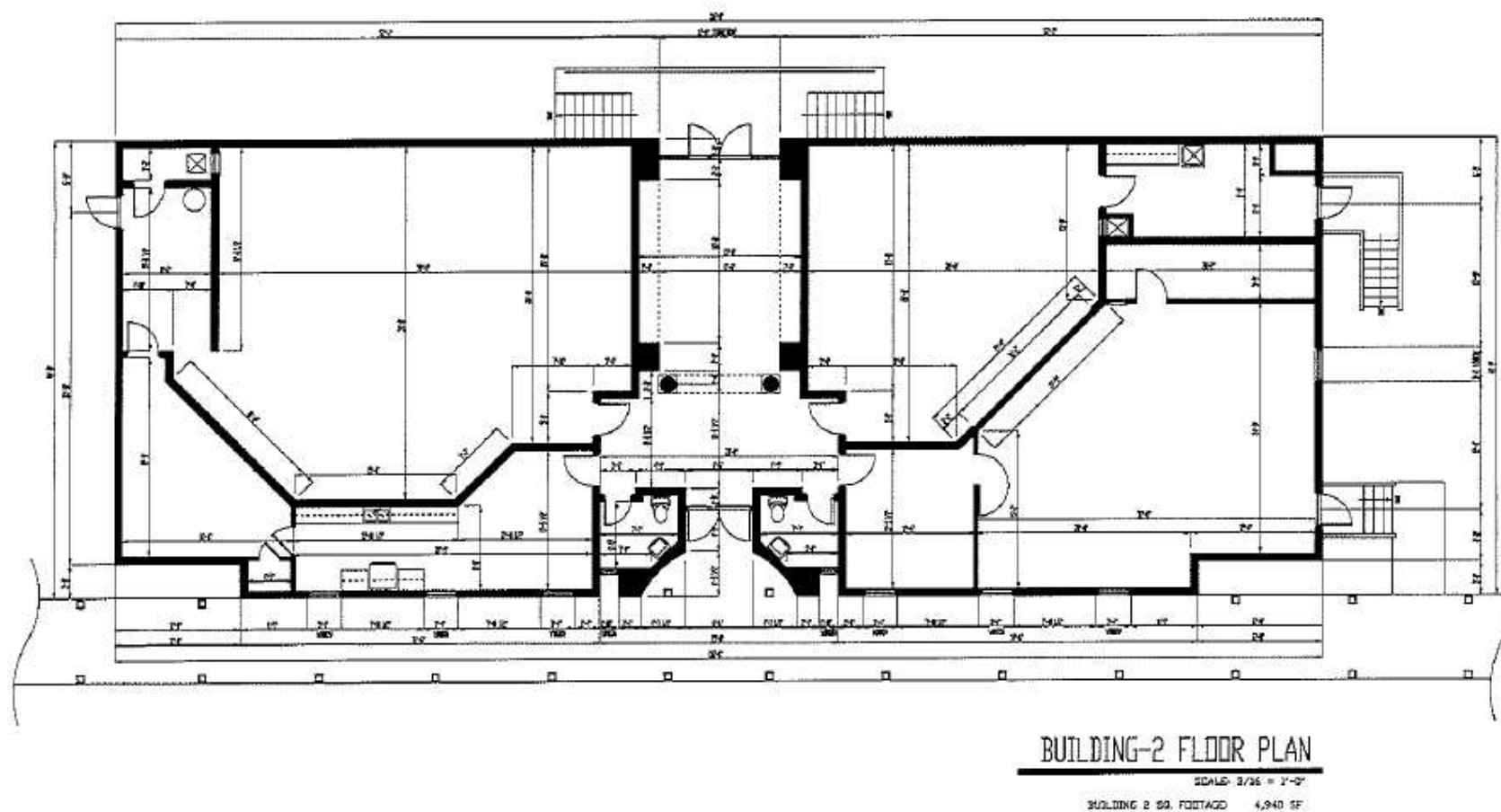
334.387.2724
jmasters@mcrmpm.com

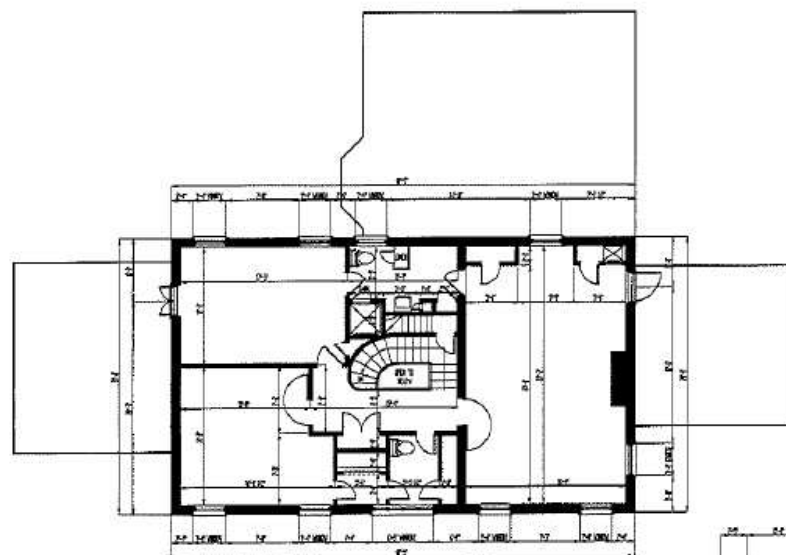
MOORE COMPANY REALTY

312 Catoma Street, Suite 200, Montgomery, AL 36104
334.262.1958 | moorecompanyrealty.com



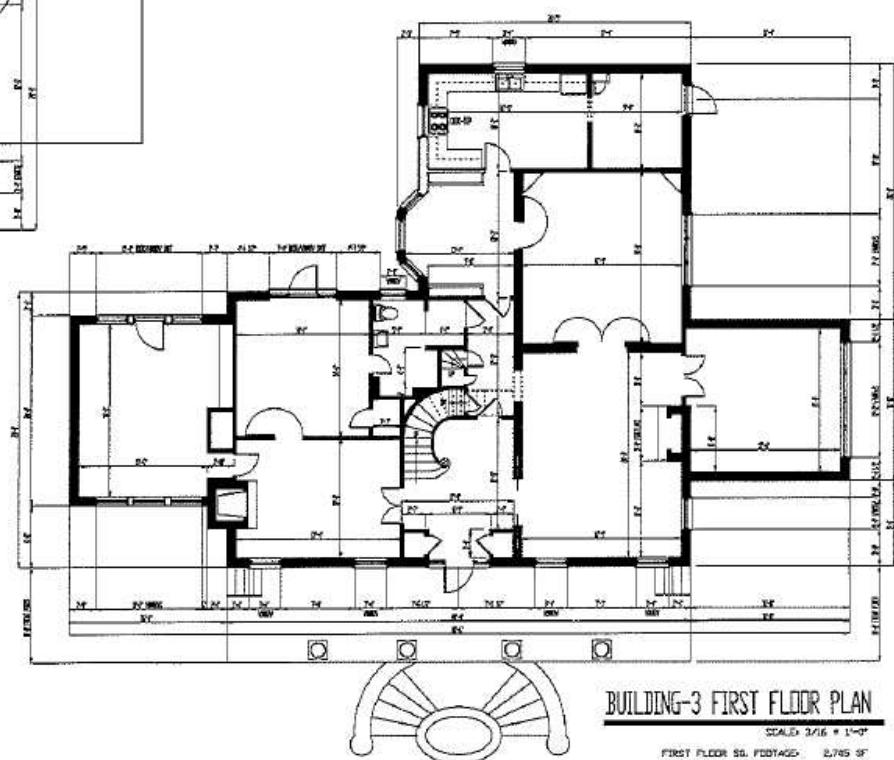






BUILDING-3 SECOND FLOOR PLAN

SCALE: 3/16" = 1'-0"
SECOND FLOOR SQ. FOOTAGE: 1,409 SF



BUILDING-3 FIRST FLOOR PLAN

SCALE: 3/16" = 1'-0"
FIRST FLOOR SQ. FOOTAGE: 2,785 SF
SECOND FLOOR SQ. FOOTAGE: 1,409 SF
TOTAL SQ. FOOTAGE: 4,194 SF

2005 N COUNTRY CLUB DR

MONTGOMERY, AL 36106

Demographics

DEMOGRAPHIC SUMMARY

2005 N Country Club Dr, Montgomery, Alabama, 36106

Ring of 3 miles

KEY FACTS

71,663

Population



29,645

Households

38.2

Median Age

\$42,195

Median Disposable Income

EDUCATION

12%

No High School Diploma



28%

High School Graduate



27%

Some College



33%

Bachelor's/Grad/Prof Degree

INCOME



\$51,572

Median Household Income



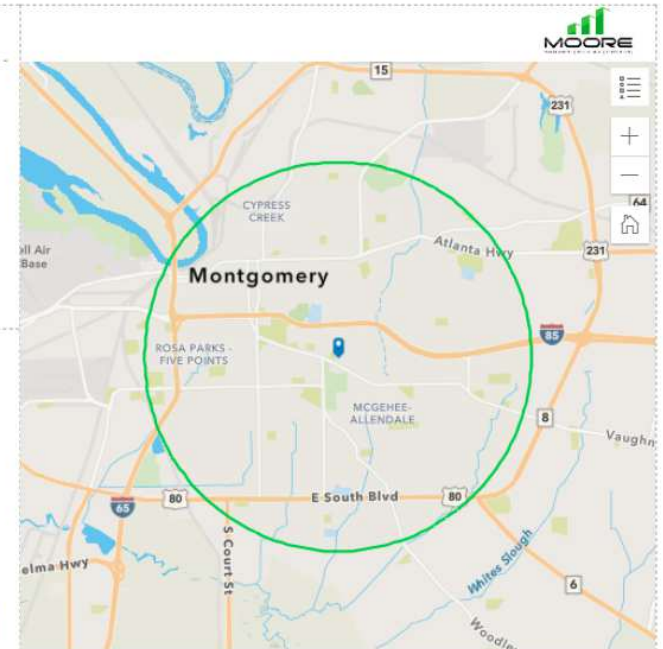
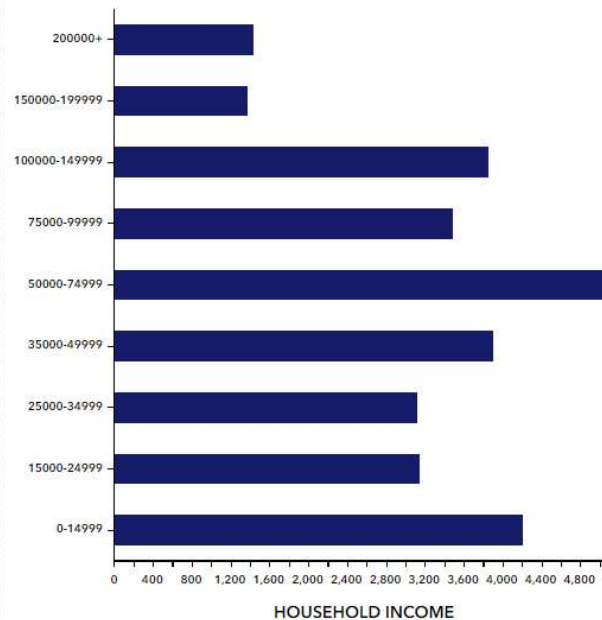
\$31,147

Per Capita Income



\$74,238

Median Net Worth



EMPLOYMENT



White Collar



Blue Collar



Services

60%

24%

20%

5.9%

Unemployment Rate

GENE CODY, CCIM, SIOR

334.386.2441
gcody@mcrmpm.com

JON MASTERS, CCIM

334.387.2724
jmasters@mcrmpm.com

MOORE COMPANY REALTY

312 Catoma Street, Suite 200, Montgomery, AL 36104
334.262.1958 | moorecompanyrealty.com



2005 N COUNTRY CLUB DR

MONTGOMERY, AL 36106

Retail Map



GENE CODY, CCIM, SIOR

334.386.2441
gcody@mcrmpm.com

JON MASTERS, CCIM

334.387.2724
jmasters@mcrmpm.com

MOORE COMPANY REALTY

312 Catoma Street, Suite 200, Montgomery, AL 36104
334.262.1958 | moorecompanyrealty.com

