



2024 Demographics	3 Miles	5 Miles
Population	2,445	6,839
Households	974	2,723
Average HH Income	\$90,349	\$98,115
Traffic Counts		
Ocean Hwy (Hwy 17)	29,630 vpd	
Highway 87	8,850 vpd	

For more information contact:

Phil Begany

919-792-6933 (Direct)

919-302-7304 (Mobile)

phil.begany@latpurser.com

Highlights:

- Residential growth strong. Brunswick County growth one of the strongest in NC over the past ten years.
- 1.43 Acres
- Occupancy average of +/-85%. Upside with a local owner.
- Billboard income included
- Land available next door for expansion

Brunswick County, NC Residential Development Dashboard

Data Year Range: 2015 - Present

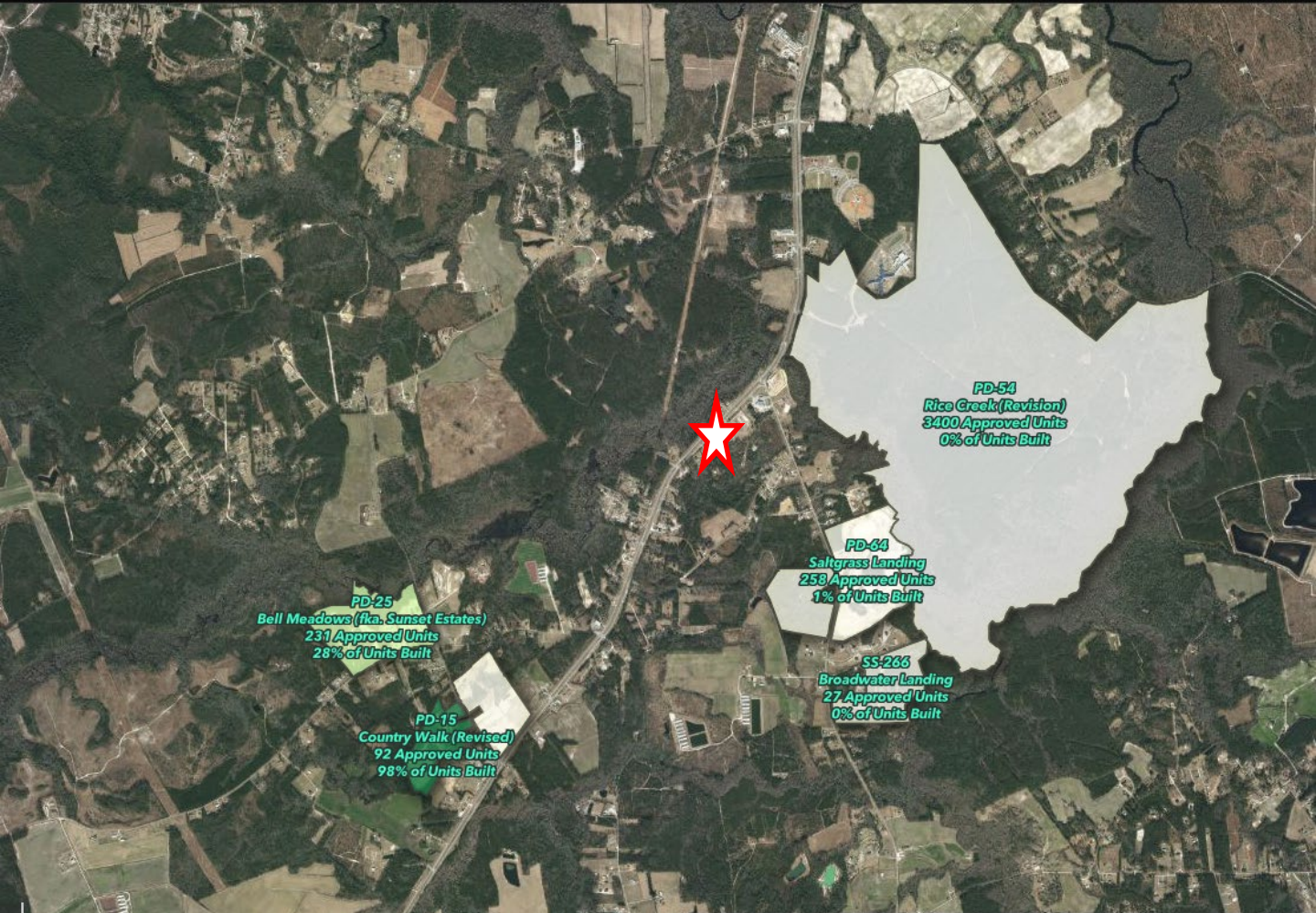
Last Updated: 05/23/2025

Approved

Proposed

Abandoned/Inactive

Ann

*For more information contact:***Phil Begany**

919-792-6933 (Direct)

919-302-7304 (Mobile)

phil.begany@latpurser.com