

ELM
PARTNERS

DOWNTOWN RALEIGH PROPERTY FOR SALE

122 S Salisbury Street
Raleigh, NC 27601



Exterior Rendering



CONTENTS

ABOUT	01
SITE MAP	02
EXISTING FLOOR PLANS	03
BUILDING SQUARE FOOTAGE	04
CONTACT	05

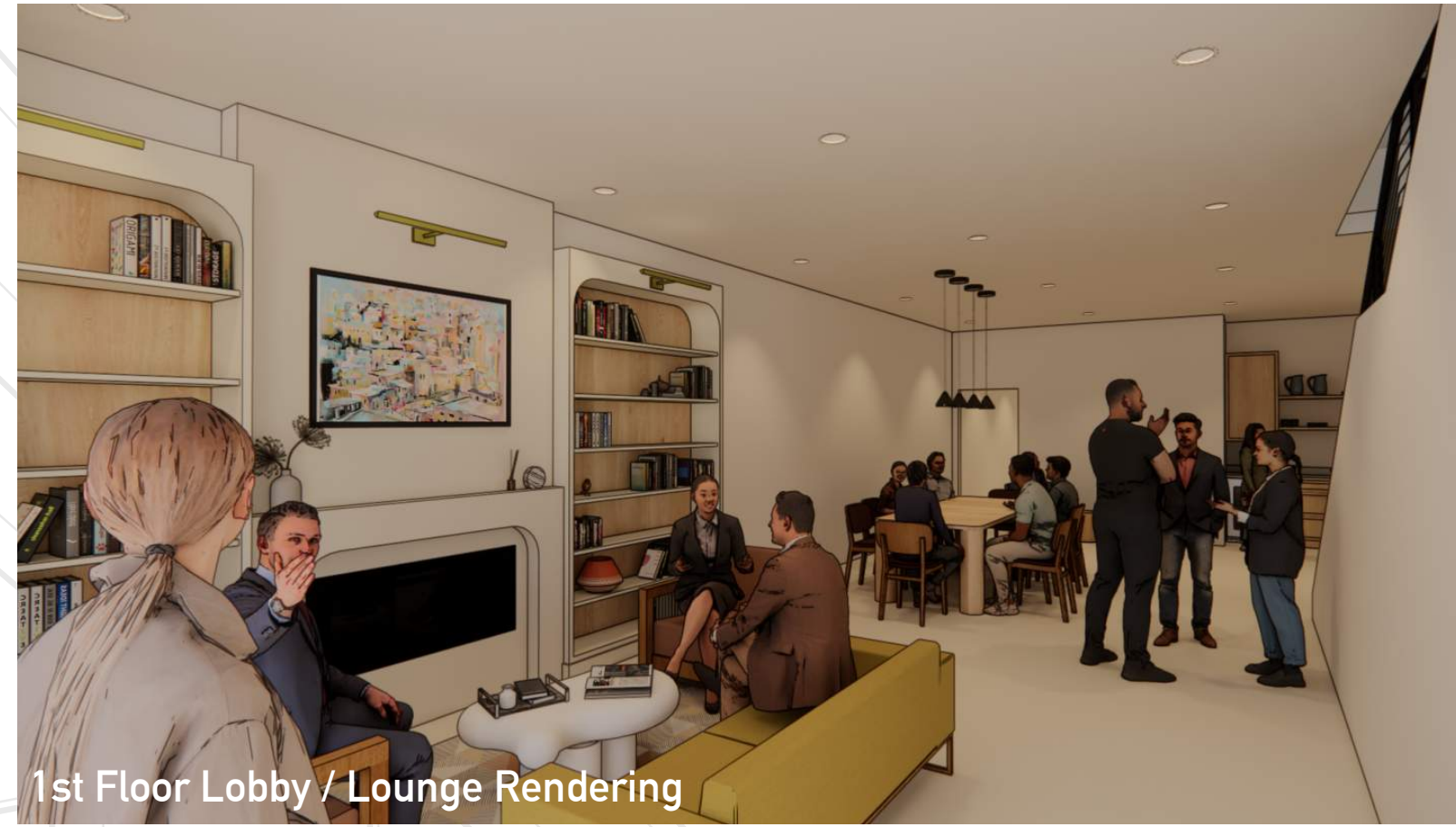
00

A HISTORIC BLANK CANVAS

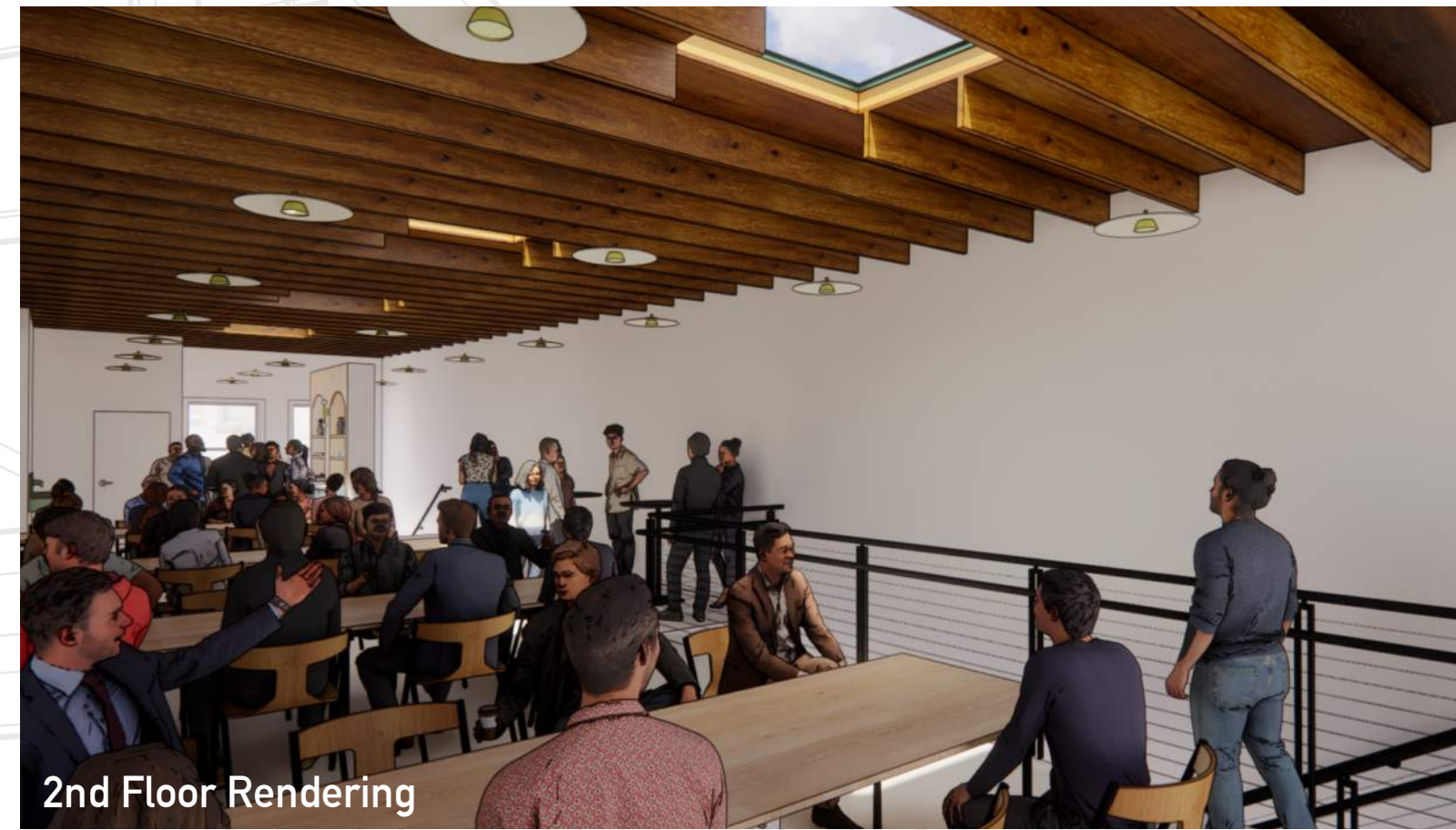
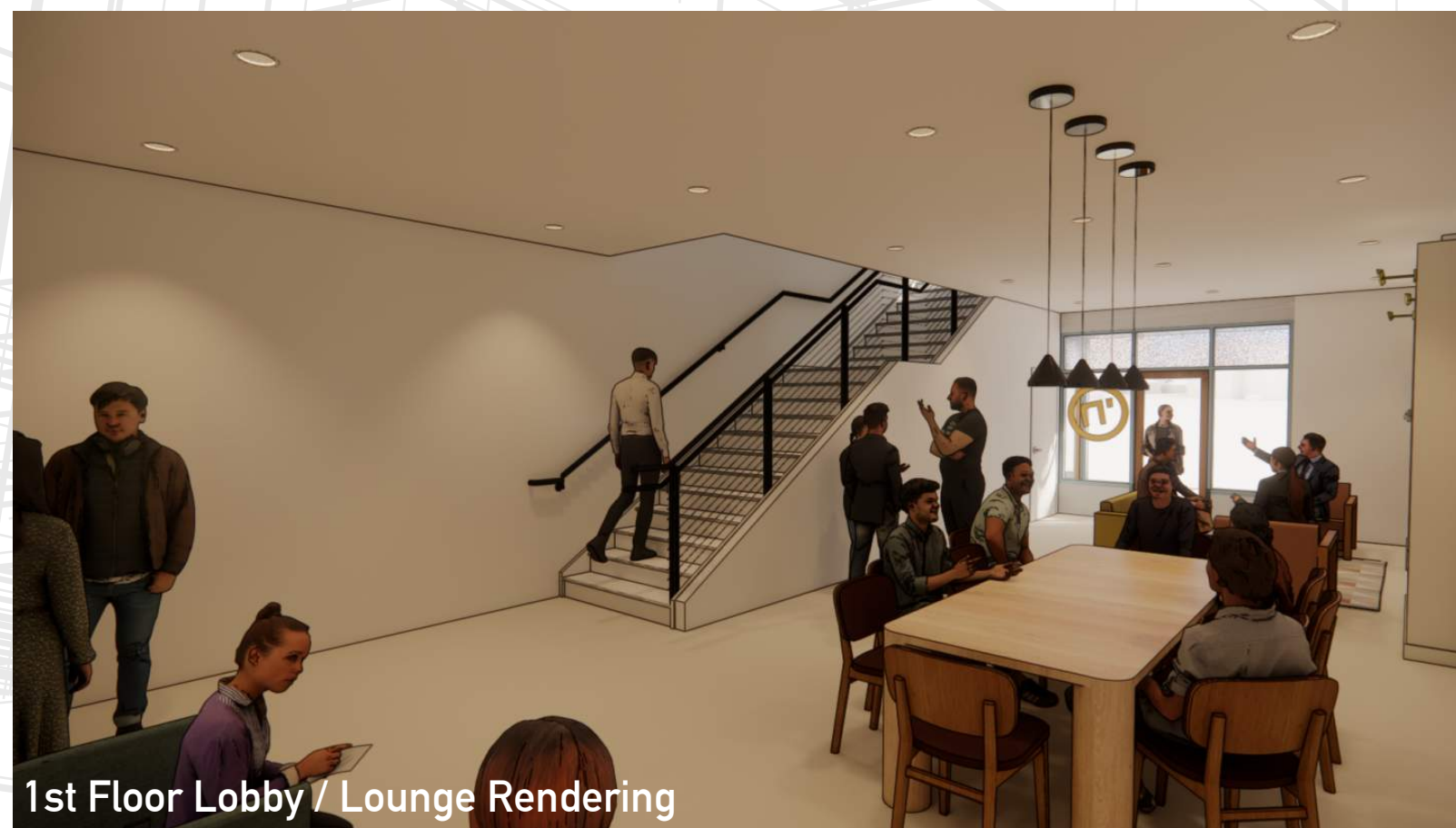
Located right in the heart of downtown Raleigh, take advantage of the historic charm and make this blank canvas your own.

122 S Salisbury Street sits at a total of just under 4,500 square feet and includes 3 stories. Each floor currently has its own entrance from the first floor so a perfect opportunity to do multiple concepts or to lease out one of the floors. The space is ripe for restaurant, office, events space, bar and more.

All due diligence materials are already secured and will be provided during due diligence.



VICINITY MAP / Downtown Raleigh



CONTACT BROKER FOR PRICING

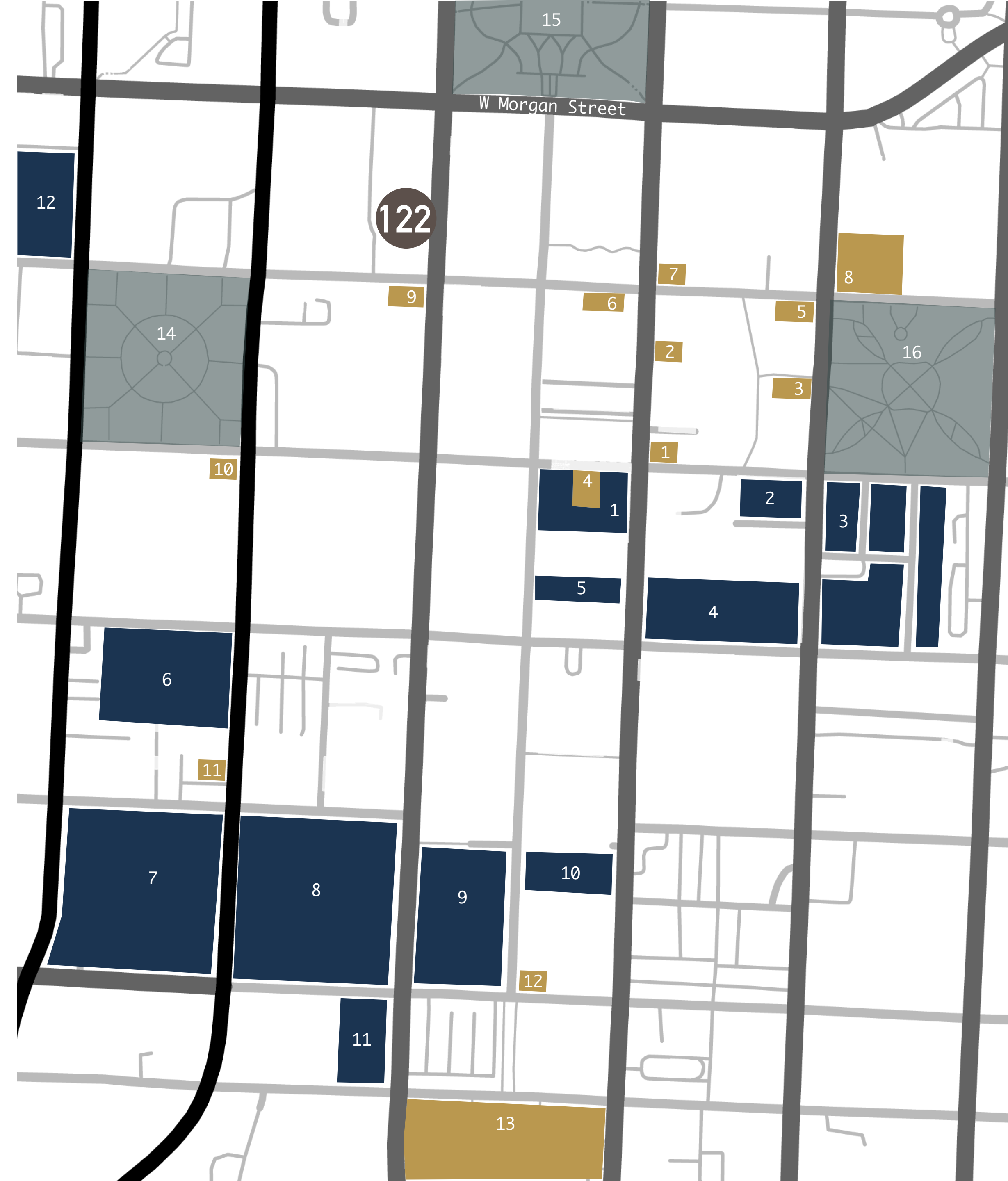
01

LIVE / WORK / PLAY

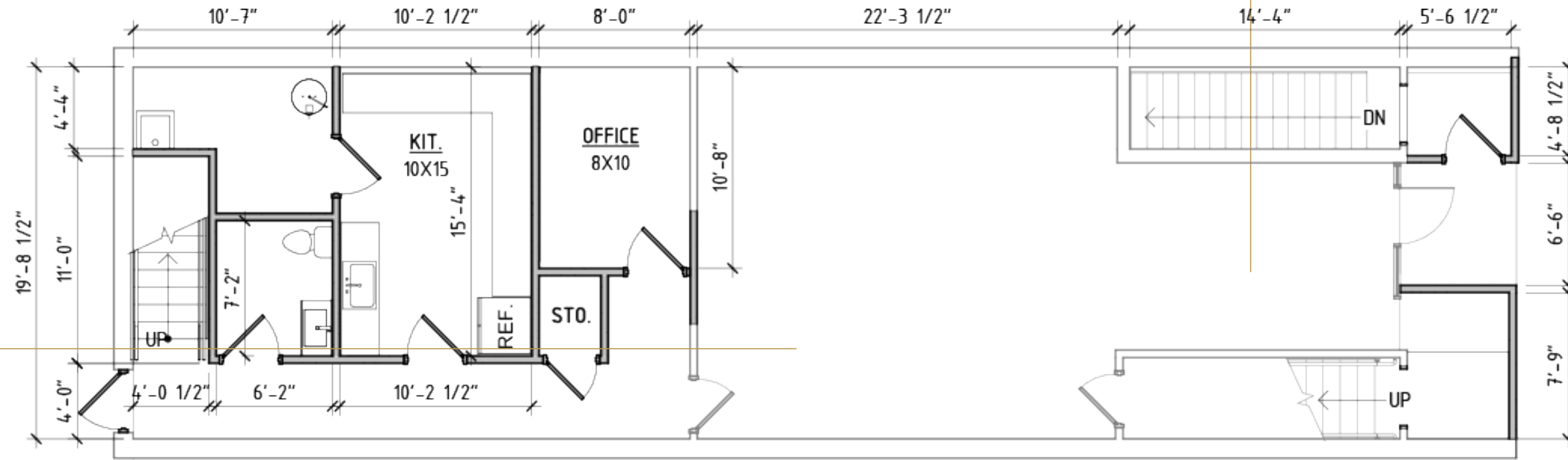
Nearby small businesses, venues and livable developments

- Beasley's Chicken + Honey 01
- St. Roch 02
- Brewery Bhvana 03
- Bittersweet 04
- Watts + Ward 05
- Raleigh Times / Morning Times 06
- Sitti 07
- Marbles Museum / Imax 08
- Death + Taxes 09
- Whiskey Kitchen 10
- Pooles Kitchen 11
- Chido Taco and Taqueria 12
- Center for the Performing Arts 13
- Nash Square 14
- NC State Capitol 15
- Moore Square 16

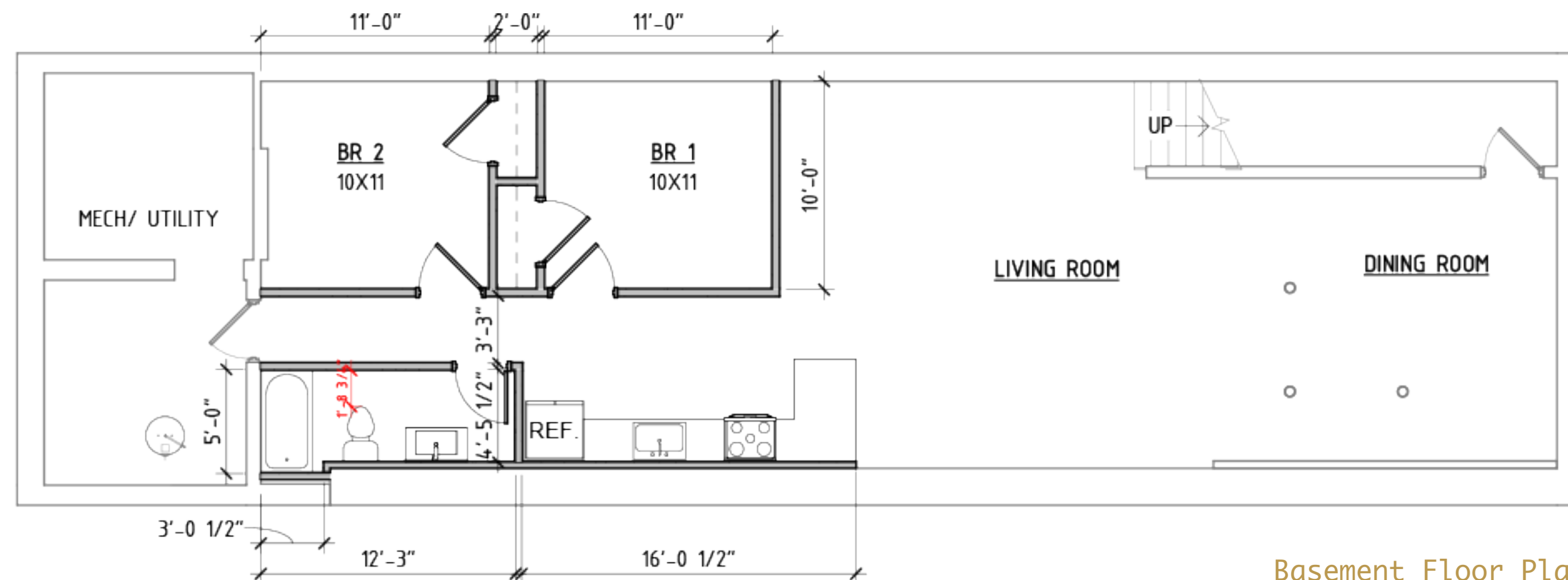
- PNC Condos 1
- Skyhouse Raleigh Apartments 2
- City Market Historic District 3
- The Edison Apartments 4
- The Hudson Condos 5
- The L Apartments 6
- Red Hat Ampitheater 7
- Raleigh Convention Center 8
- Marriot City Center 9
- 511 Faye Apartments 10
- Residence Inn by Marriot 11
- The Hue 12



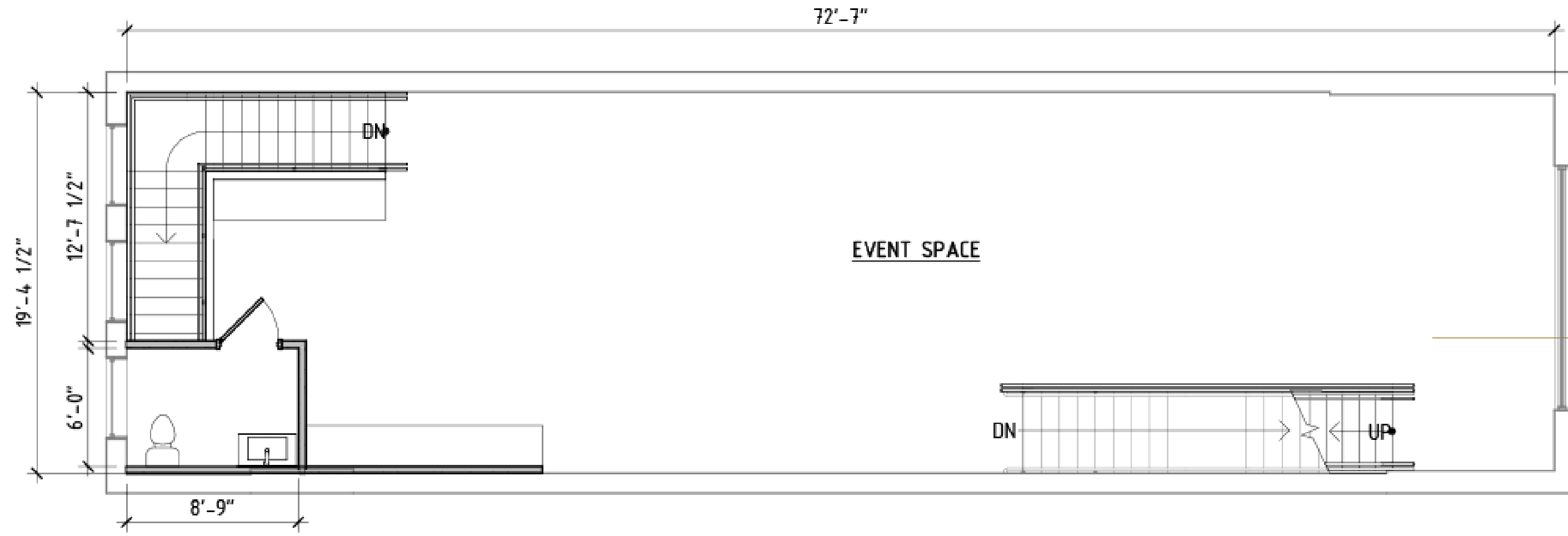
03



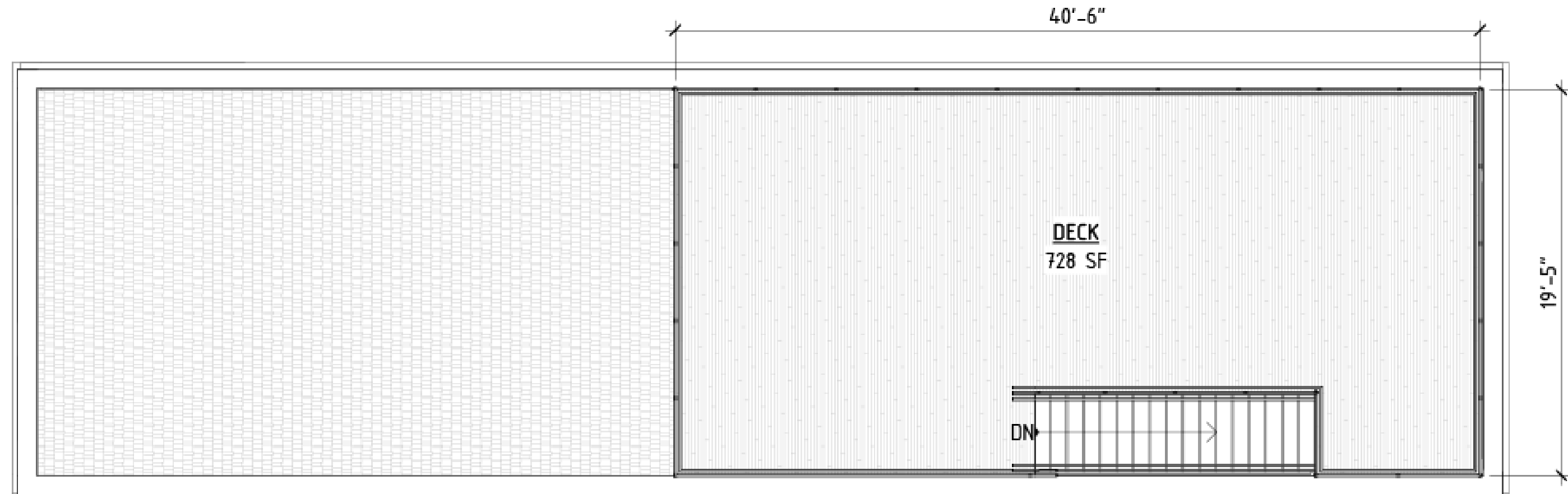
First Floor Plan



Basement Floor Plan



2nd Floor Level



Roof Deck (proposed)

04

TOTAL BUILDING SQUARE FOOTAGE BREAKDOWN

- Basement: 1,400
- 1st Floor: 1,400
- 2nd Floor: 1,400
- Proposed Roof Deck: 728
- Total Square Footage: 4,200 (current) | 4,928 (proposed)**

CONTACT BROKER FOR PRICING


CONTACT




2nd Floor Event Space

ELM
PARTNERS

JEREMY DECKELBAUM

 jeremy@elm.partners

 919-830-8339