

# 43,000 Square Foot Single Tenant Flex/Industrial Campus

3600 SW 47th Ave, Gainesville, FL 32608



## CONTACT

Todd Chase  
(352) 514-0168  
[todd@lexisre.com](mailto:todd@lexisre.com)



# 43,000 Square Foot Single Tenant Flex/Industrial Campus

3600 SW 47th Ave, Gainesville, FL 32608

## Details:

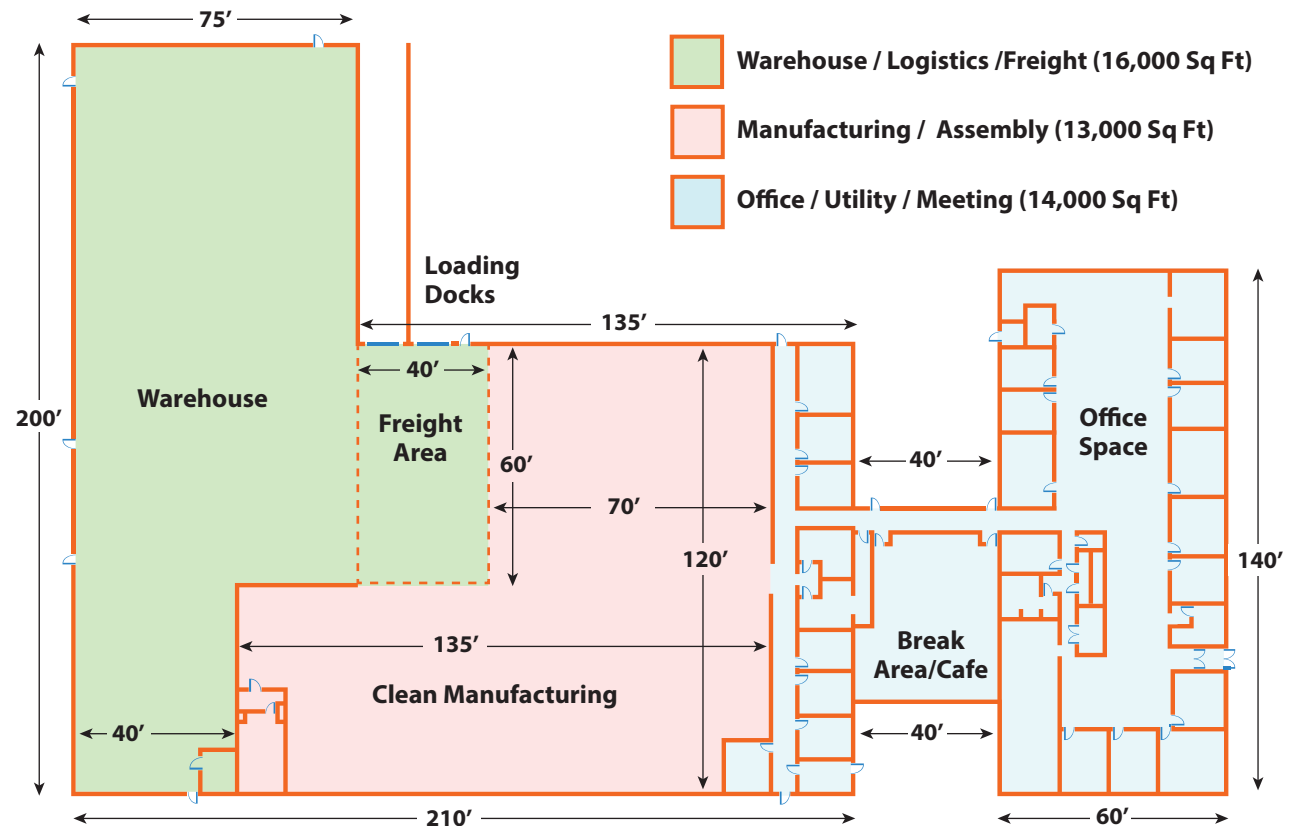
Prime office and adaptable manufacturing plant with large warehouse capacity and ample parking for large staff. Campus consists of three sections defined by large frontal office area, central assembly/manufacturing wing with immense flexibility for virtually any industry from medical to electronics to textiles, etc. The rear third consists of a large warehouse with both large floor space and vertical component for forklift accessible racks facilitating huge storage potential. Additional amenities consist of multiple outdoor break areas and a large indoor employee dining/vending/recreation space.

## Space Details

Lease Type: NNN/Triple Net  
Rate: \$  
Parking: Plenty  
Lease Term: Negotiable  
Use: Industrial  
Rentable Sq Ft: 43,000 Sq Ft

## Building Details

Property Type: Off. / Mfg. / Wareh.  
Subtype: Manufacturing Offices  
Tenancy: Single  
Vacant SQFT: 43,000  
Land Acres: 5.68  
Stories: 1  
Total Parking Spaces: Plenty  
Elevators: No  
County: Alachua County



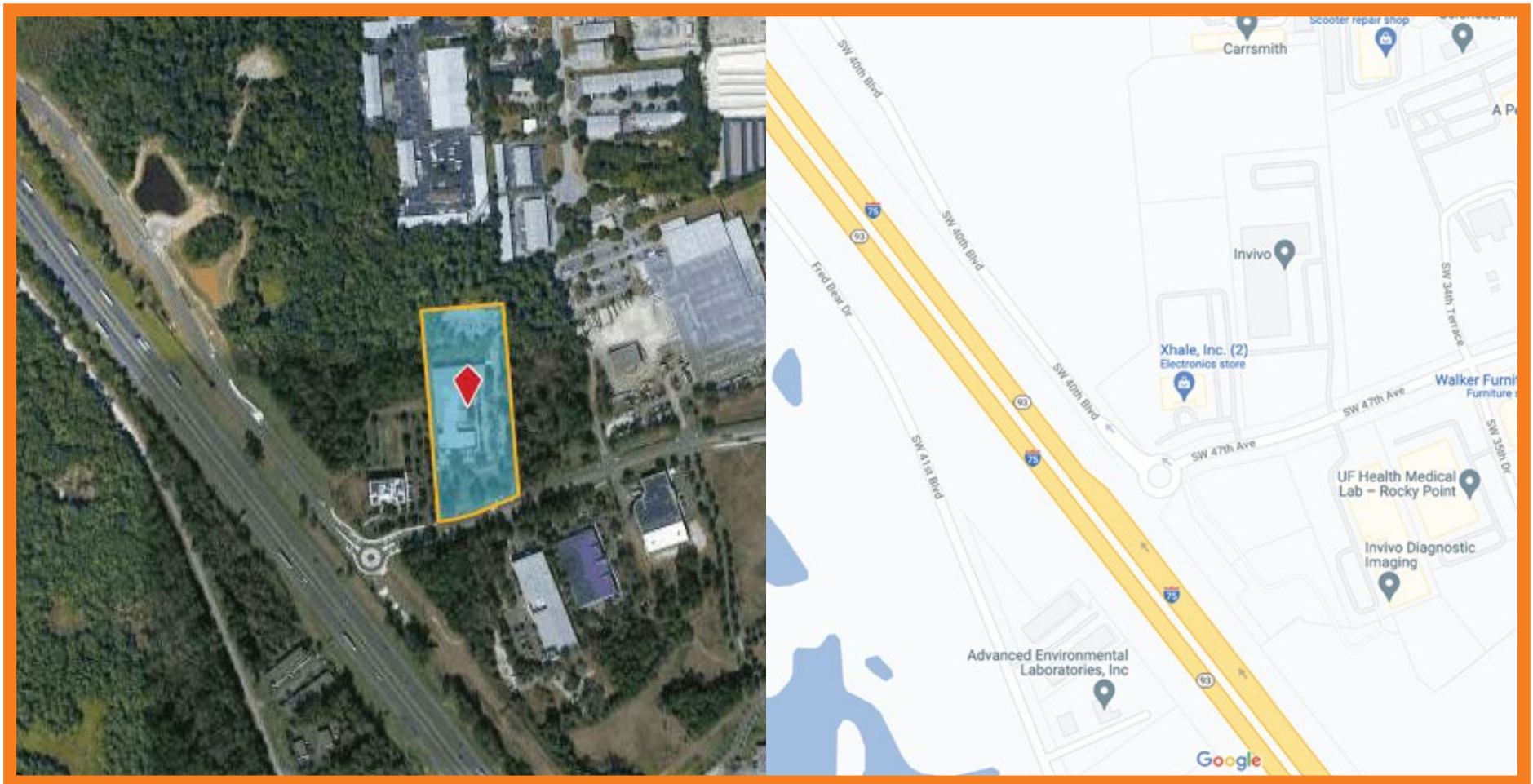
## CONTACT

Todd Chase  
(352) 514-0168  
todd@lexisre.com



# 43,000 Square Foot Single Tenant Flex/Industrial Campus

3600 SW 47th Ave, Gainesville, FL 32608



## CONTACT

Todd Chase  
(352) 514-0168  
[todd@lexisre.com](mailto:todd@lexisre.com)



# 43,000 Square Foot Single Tenant Flex/Industrial Campus

3600 SW 47th Ave, Gainesville, FL 32608



Please feel free to contact the property agent for more images and information or to arrange for a tour of the available space.



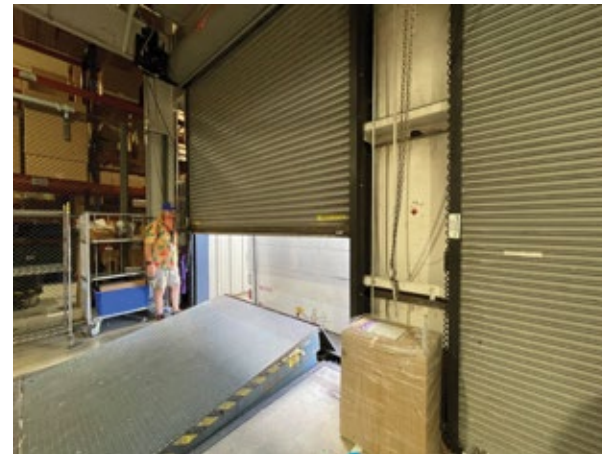
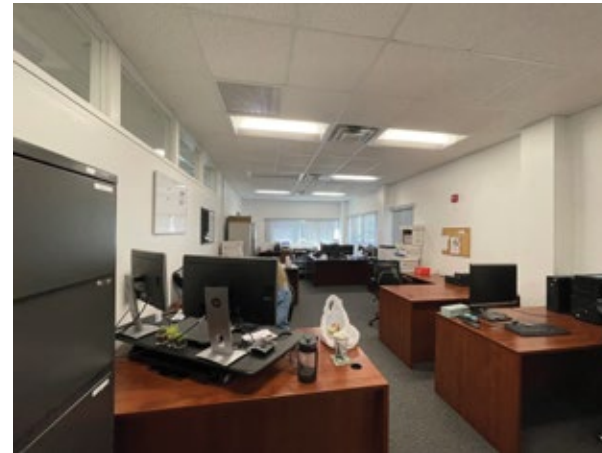
## CONTACT

Todd Chase  
(352) 514-0168  
[todd@lexisre.com](mailto:todd@lexisre.com)



# 43,000 Square Foot Single Tenant Flex/Industrial Campus

3600 SW 47th Ave, Gainesville, FL 32608



Please feel free to contact the property agent for more images and information or to arrange for a tour of the available space.



## CONTACT

Todd Chase  
(352) 514-0168  
[todd@lexisre.com](mailto:todd@lexisre.com)



# 43,000 Square Foot Single Tenant Flex/Industrial Campus

3600 SW 47th Ave, Gainesville, FL 32608



Please feel free to contact the property agent for more images and information or to arrange for a tour of the available space.



## CONTACT

Todd Chase  
(352) 514-0168  
[todd@lexisre.com](mailto:todd@lexisre.com)

