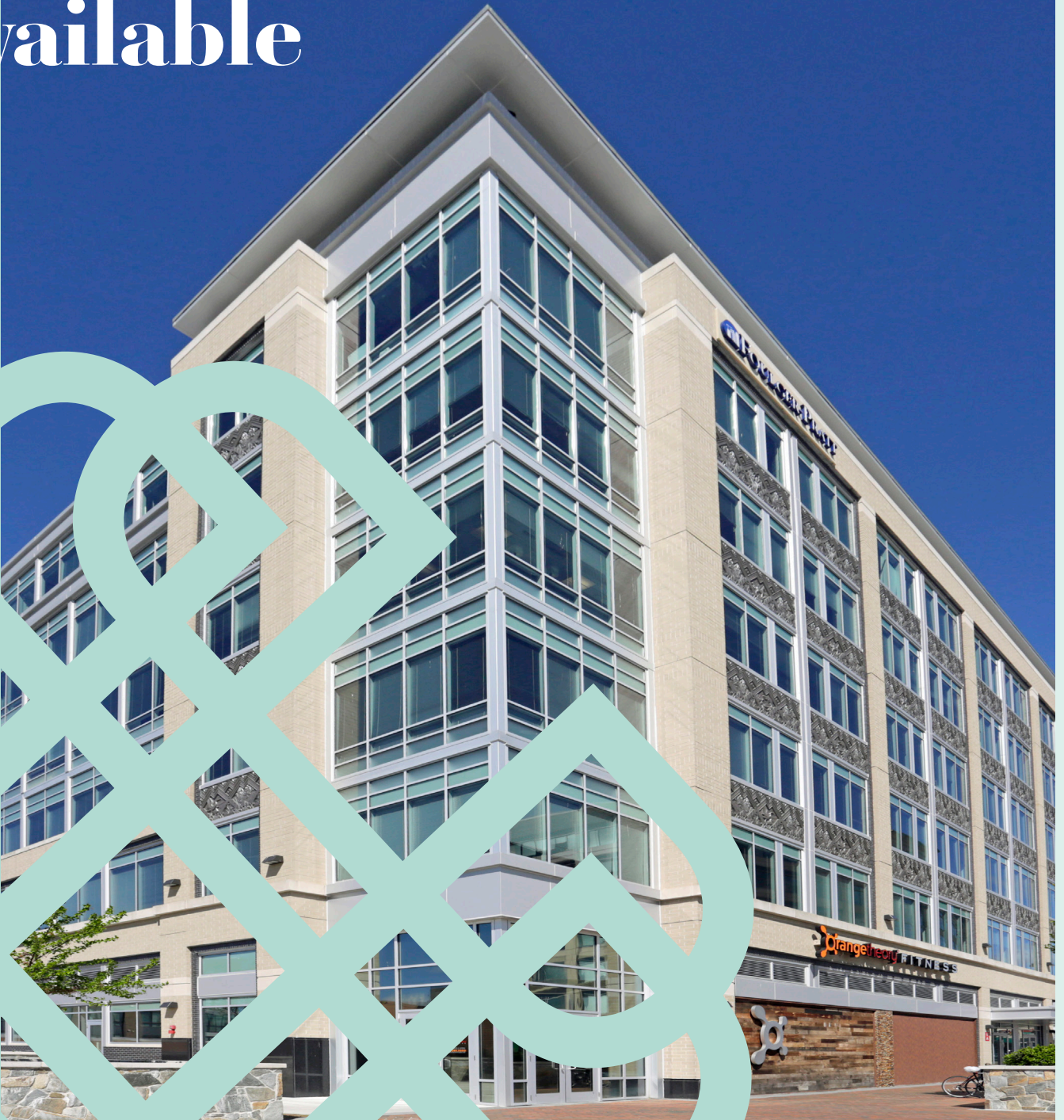


# Sublease Opportunity Available



PARK  
**POTOMAC**

12435 Park Potomac Avenue



## MULTI-TENANT SUBLEASE SCENARIO

### SECOND FLOOR SUBLEASE

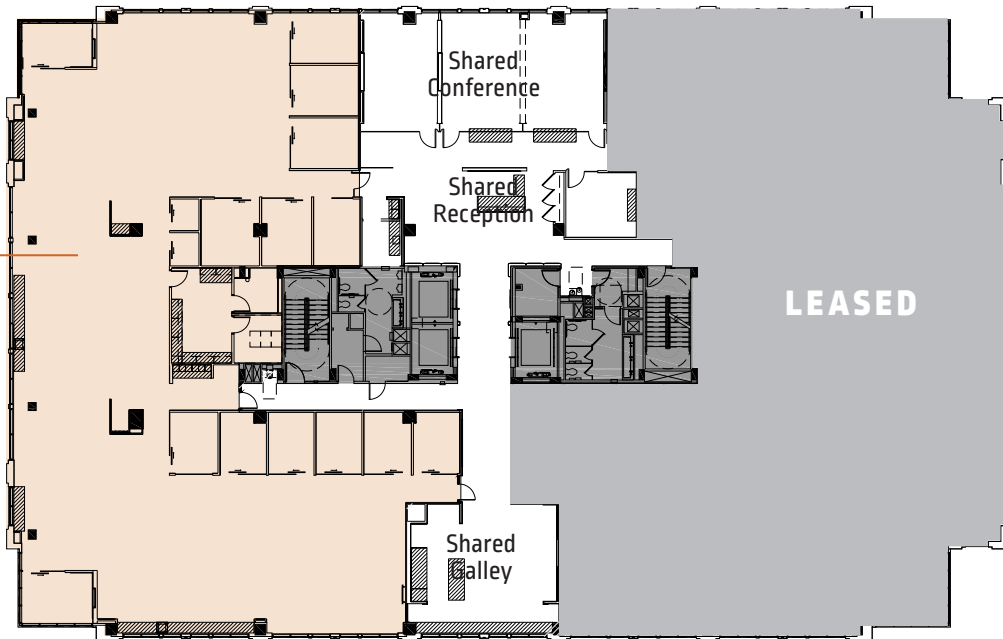
9,074 RSF



## SHARED AMENITIES SUBLEASE SCENARIO

### SECOND FLOOR SUBLEASE

10,372 RSF



*For more information, contact*

**Phillip McCarthy**  
301.896.9011  
phil.mccarthy@  
transwestern.com

**Keith Foery**  
301.896.9028  
keith.foery@  
transwestern.com

**Guy Copperthite**  
301.896.9015  
guy.copperthite@  
transwestern.com

**Mark Boyce**  
301.896.9090  
mark.boyce@  
transwestern.com

6700 Rockledge Drive | Suite 500A | Bethesda, Maryland 20817  
301.571.0900 | [transwestern.com](http://transwestern.com)

 **TRANSWESTERN**

 **Foulger  
Pratt**