



**Keegan & Coppin**  
COMPANY, INC.

FOR LEASE

103 EAST BLITHEDALE AVENUE  
MILL VALLEY, CA

Beautifully Configured  
High Identity Office Space

103

Gregory C. Dyer, Attorney  
Richard J. Hayes, CPA  
J.R. Hastings, Attorney  
Pieter Bogaards, Attorney  
Joel D. Bierer, Attorney  
Arbor Financial Systems  
The AIX Group

REPRESENTED BY:

**VESA BECAM, PARTNER**  
LIC # 01459190 (415) 461-1010, EXT 114  
[VESA@KEEGANCOPPIN.COM](mailto:VESA@KEEGANCOPPIN.COM)

**MATT STORMS, PARTNER**  
LIC # 01233478 (415) 461-1010, EXT 123  
[MSTORMS@KEEGANCOPPIN.COM](mailto:MSTORMS@KEEGANCOPPIN.COM)





## OFFICE SPACE FOR LEASE



103 EAST BLITHEDALE AVENUE  
MILL VALLEY, CA

### PRIME MILL VALLEY OFFICE LOCATION

## PROPERTY INFORMATION

### HIGHLIGHTS

- Excellent location
- Well maintained
- Common area conference room
- Assigned on-site parking
- Close to many amenities
- Common area kitchen

### DESCRIPTION OF PREMISES

High-identity office building located in Downtown Mill Valley. Full service office suites that include use of the common area conference room and kitchen.

### LEASE TERMS

#### Size

165 - 225+/- sq ft

#### Rate

\$1,300 - 1,950 per month

Full Service

#### Security Deposit

\$1,300 - \$1,950

#### Term

1 year

#### Building Size

4,000+/- sq ft

Keegan & Coppin Co., Inc.  
101 Larkspur Landing Circle, Ste. 112  
Larkspur, CA 94939  
www.keegancoppin.com  
(415) 461-1010

The above information, while not guaranteed, has been secured from sources we believe to be reliable. Submitted subject to error, change or withdrawal. An interested party should verify the status of the property and the information herein.

REPRESENTED BY:

VESA BECAM, PARTNER  
LIC # 01459190 (415) 461-1010, EXT 114  
VESA@KEEGANCOPPIN.COM

MATT STORMS, PARTNER  
LIC # 01233478 (415) 461-1010, EXT 123  
MSTORMS@KEEGANCOPPIN.COM



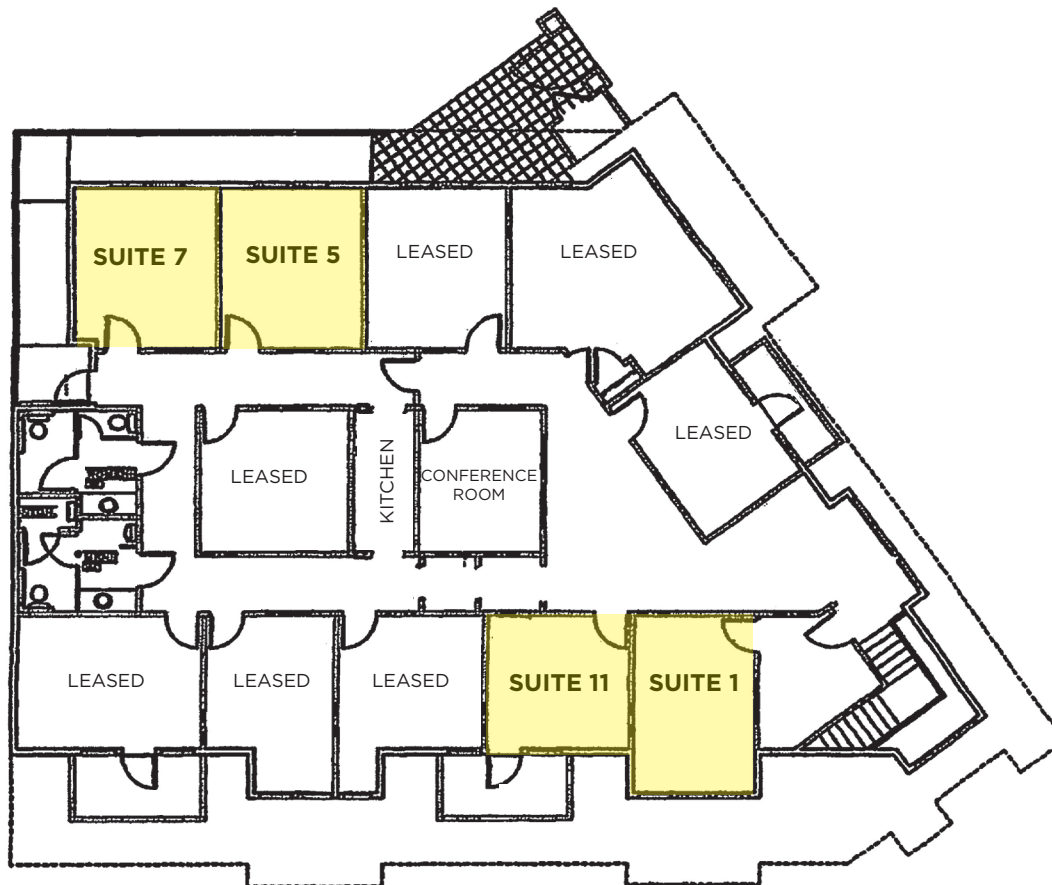
## FLOOR PLAN OF AVAILABLE SUITES AND RENTS



103 EAST BLITHEDALE AVENUE  
MILL VALLEY, CA

**PRIME MILL VALLEY  
OFFICE LOCATION**

### MAIN LEVEL



### ASKING RENT

**SUITE 1:** \$1,950/mo

**SUITE 5:** \$1,300/mo

**SUITE 7:** \$1,300/mo

**SUITE 11:** \$1,350/mo