

MEDIA PARK

SANTA
MONICA



CLICK TO VIEW FLY-THROUGH

FOR LEASE

2,789 - 47,000 SF IN THE HEART OF SANTA MONICA

AVISON
YOUNG

adison
DADTNIEDC



AVAILABILITY 2,789 – 47,000 RSF

TERM 3-10 years

RENT **REDUCED RATE!** \$2.25 /per SF / NNN

PARKING 3 / 1,000 RSF
\$225 Per Month Reserved
\$175 Per Month Unreserved
\$350 Per Month Tandem Reserved

THE IDEAL **CAMPUS** ENVIRONMENT



Low density building
and campus-style
environment



Private patios
and outdoor
areas for each suite



Reserved, open-air
parking spaces directly
in front of suite



Spacious layouts and
a great mix of private
offices and open plans





AT THE **CENTER** OF IT ALL

1811 CENTINELA

1813 CENTINELA

1815B CENTINELA

1831 CENTINELA

1833 CENTINELA

1845 CENTINELA

3212 NEBRASKA

Can be combined for 24,553 RSF

Can be combined for 12,492 RSF

NET

2,789 RSF

17,965 RSF

6,588 RSF

5,406 RSF

3,500 RSF

8,992 RSF

6,225 RSF

47,000 RSF CONTIGUOUS AVAILABLE

7 Offices

20' High Ceilings

Huge Open Area

Fully Built-out
Post Production Fa-
cility

20' High Ceilings in Some Areas

High Ceilings

Conference Room
with Glass Front
Kitchen

Skylights

22' High Ceilings

New Construction

Private Offices and Open Area

Skylights

Large Open Area

Polished Concrete
Floors

Glass Roll Up Door

High Ceilings

Beautiful Kitchen with Outdoor Patio

Polished Concrete
Floors

with
Built-in Work
stations

Private Offices

Polished Concrete Floors

Offices, Kitchen

Skylights Throughout

Private Patio

Conference Room

Multiple Offices &
Conference Rooms

Edit Bays

Stage/ Screening Room

Available Now!

Polished Concrete
Floors

Large Open Area

Large Open Kitchen

20" High Ceilings

No Elevators

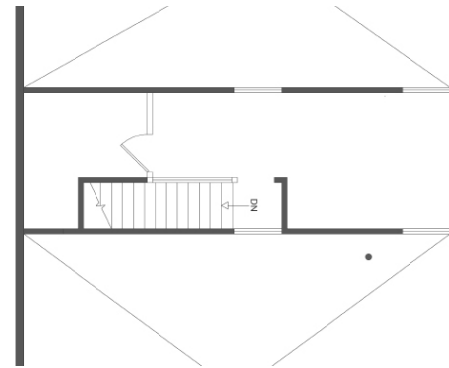
Skylights



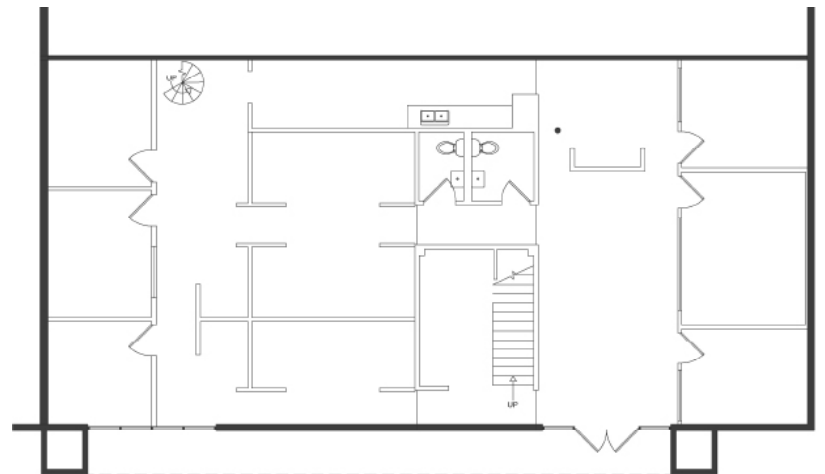
TOTAL 2,789 SF

6 Offices, Conference Room, Kitchen, and Open Area

SECOND FLOOR



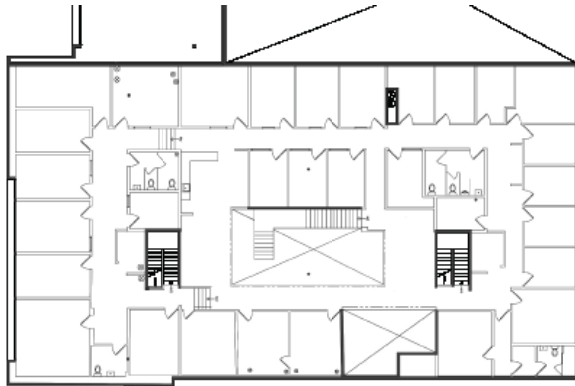
GROUND FLOOR



TOTAL 17,965 SF

Ideal Production Space with Large Amount of Edit Bays, Offices, and Conference Rooms

SECOND FLOOR



GROUND FLOOR

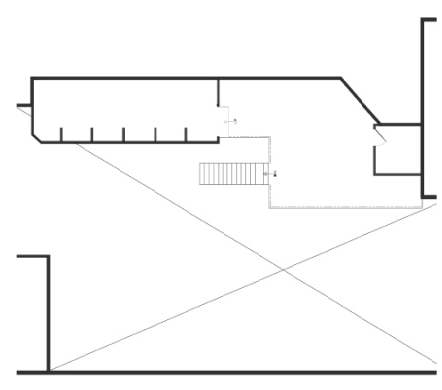




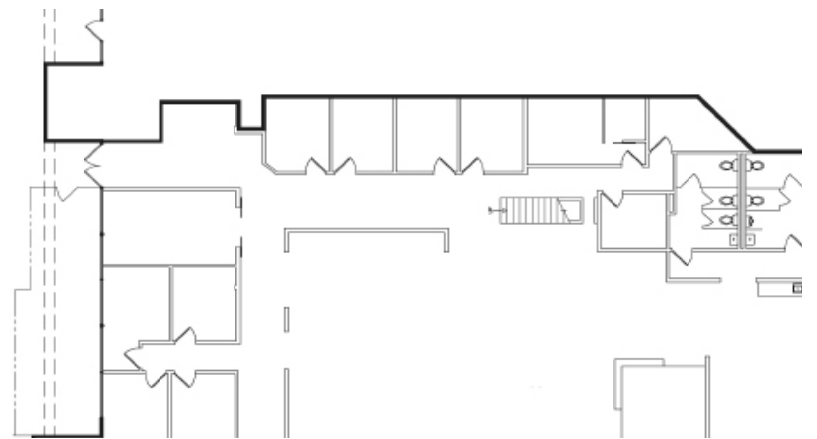
TOTAL 6,588 SF

10 Offices, Conference Room, Kitchen,
and Large Open Area

SECOND FLOOR



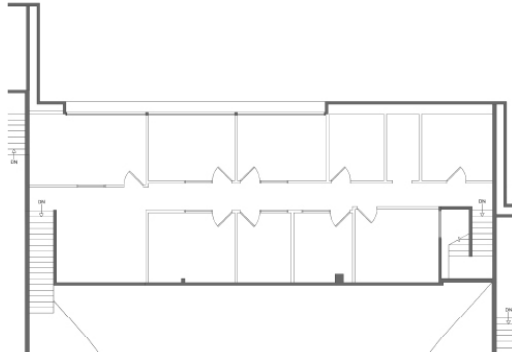
GROUND FLOOR



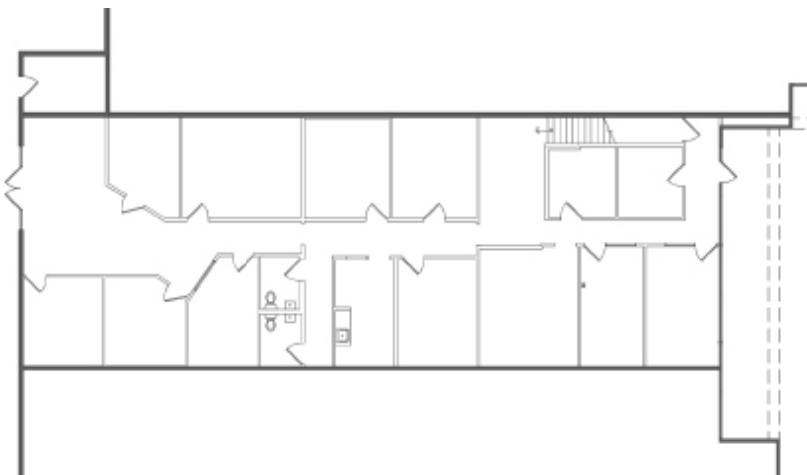
TOTAL 5,406 SF

Built-out Post Production Studio with
Numerous Edit Bays and Studio

SECOND FLOOR



GROUND FLOOR

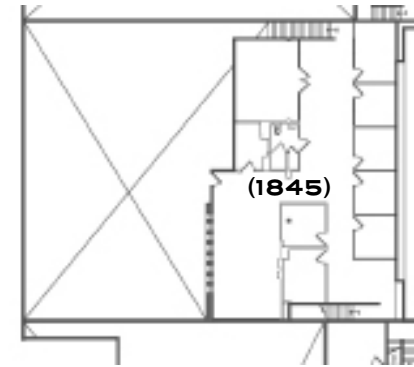




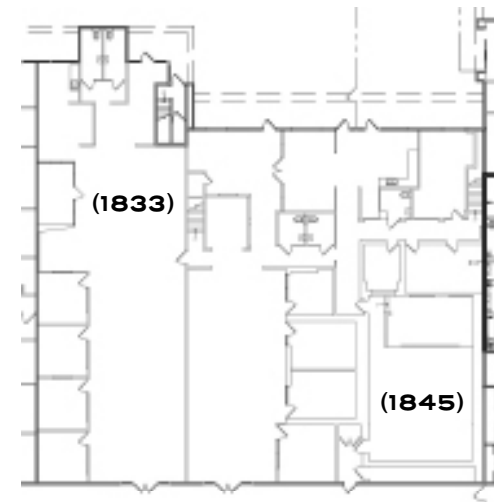
**TOTAL 12,492 SF
(DIVISIBLE TO 3,500SF)**

Production Space with Numerous Edit Bays,
Stage/Screening Room with 20' Ceilings and Private Patio

SECOND FLOOR



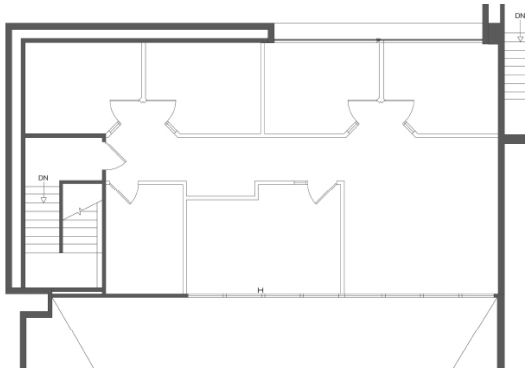
GROUND FLOOR



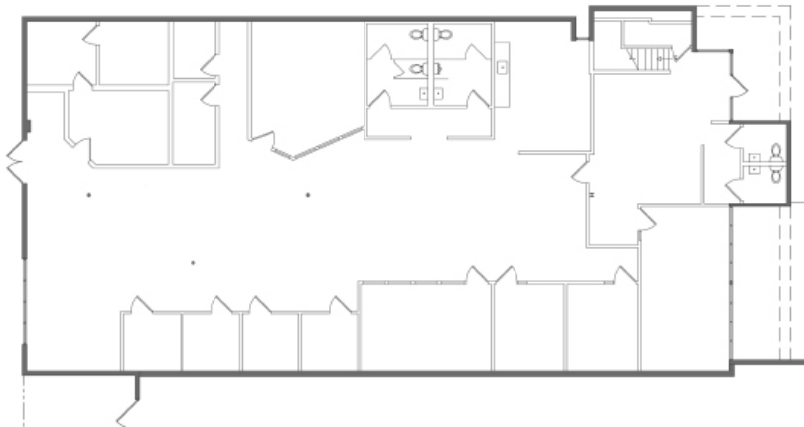
TOTAL 6,225 SF

High Ceilings, Open Area, Private Patio,
Skylight, Polished Concrete Floors

SECOND FLOOR



GROUND FLOOR



MEDIA PARK

SANTA MONICA

FOR MORE INFORMATION:

MITCH STOKES
310.780.6909
mitch.stokes@avisonyoung.com
License No. 01037526

JOE KING
310.442.3375
jking@madisonpartners.net
License No. 01195833

**AVISON
YOUNG**

**madison
PARTNERS**