

# KINGSWOOD CENTER

1630 East 15th Street | Brooklyn, NY 11229

**Approx. 100,000 SF**  
**Office / Medical / Retail**  
**Available For Lease**



## Property Highlights

- Parking garage in building with 250+ spaces
- Property features 480' of frontage
- 1 block from B/Q Sub way at Kings Highway
- 1 block from Kingswood Crossing Shopping Center
- Potential signage & building name
- Space suited for multitude of uses

## Property Overview

Kingswood Center is located in a bustling shopping and residential neighborhood. The property is in a high-traffic, high-visibility area and features a parking garage.

**Christina De Jesus**   **Chris Wittmann**   **Jeffrey Rosenblatt**  
917.470.1091   212.752.1041   917.543.8902  
cdejesus@lpc.com   cwittmann@lpc.com   jrosenblatt@lpc.com

## Availabilities

	SF	Available
3rd Floor - Full Floor	54,343 SF	Immediately
2nd Floor - Suites 201-204*	28,429 SF	Immediately

*\*Suites ranging from 3,927 SF - 12,282 SF*

## Retail

1st Floor - Suite 101	16,838 SF	
2nd Floor - Suite 202	3,927 SF	Immediately

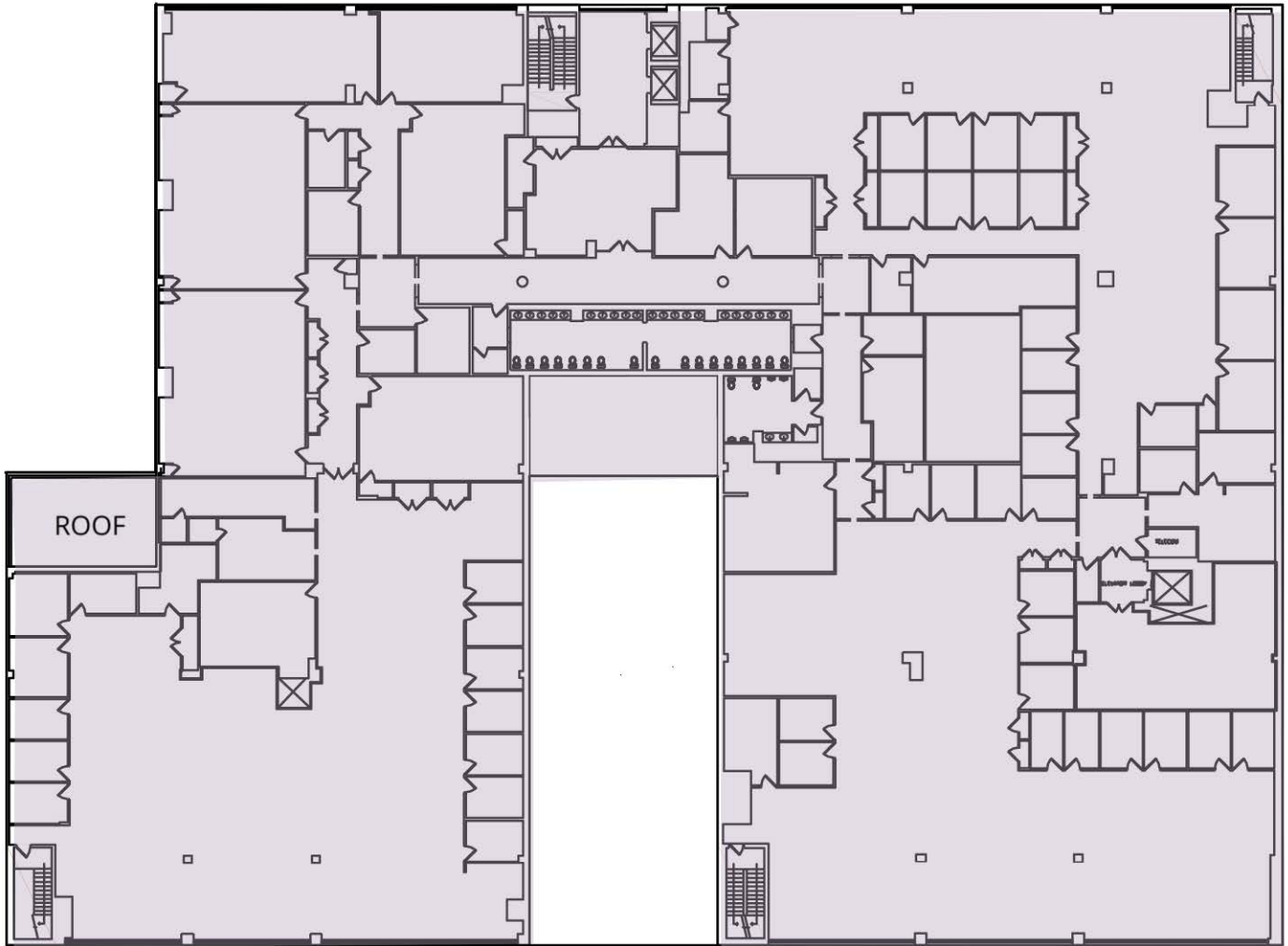
**Maximum Contiguous      99,610 SF**

# Lincoln

1630 East 15th Street  
Brooklyn, NY 11229

3rd Floor

E 15TH STREET



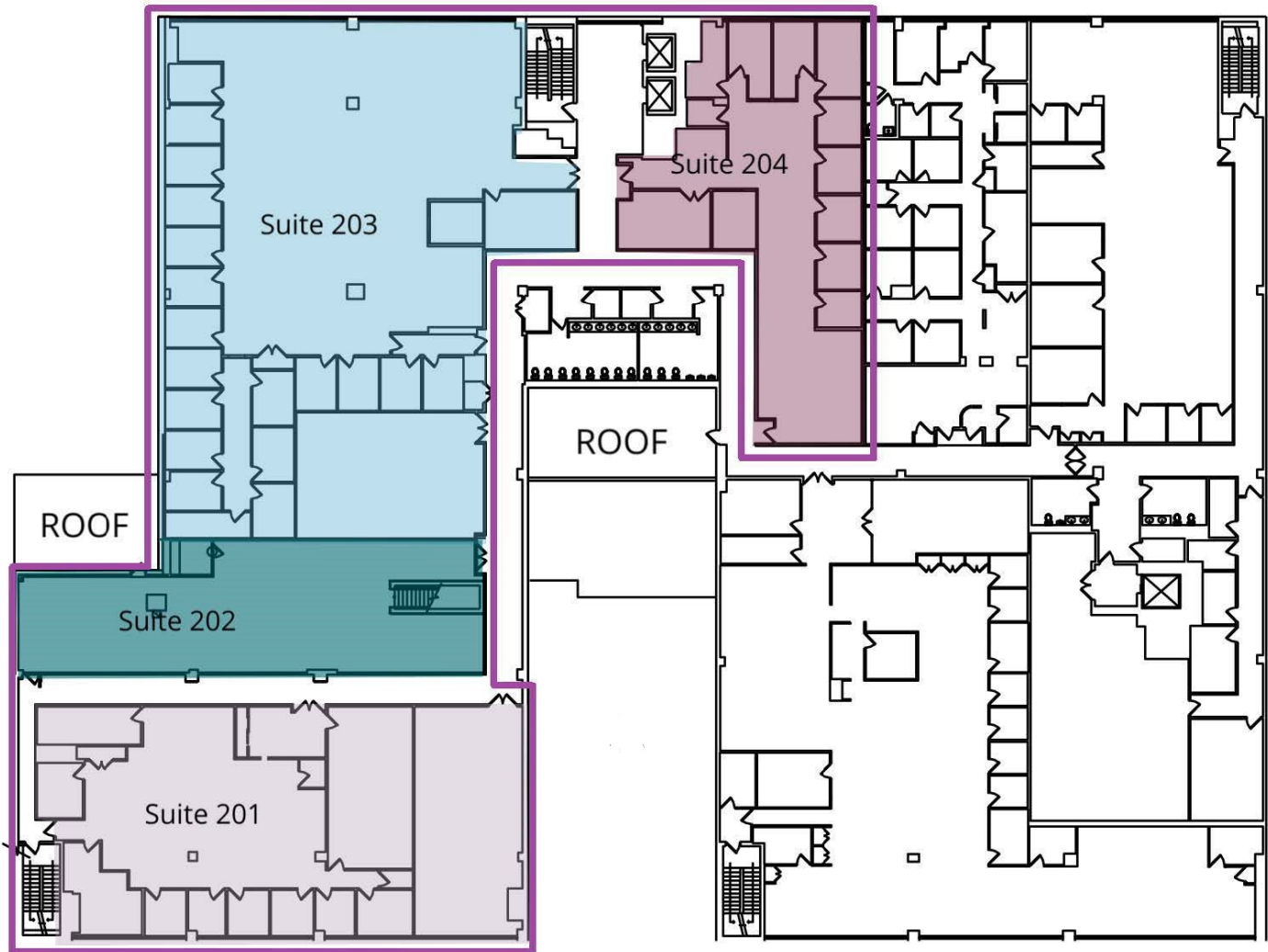
E 14TH STREET

Suite	Size
■ 3rd Floor - Full Floor	54,343 SF

**Christina De Jesus**   **Chris Wittmann**   **Jeffrey Rosenblatt**  
917.470.1091   212.752.1041   917.543.8902  
cdejesus@lpc.com   cwittmann@lpc.com   jrosenblatt@lpc.com

**Lincoln**

E 15TH STREET



E 14TH STREET

■	2nd Floor - Suite 201	7,499 SF
■	2nd Floor - Suite 202	3,927 SF
■	2nd Floor - Suite 203	12,282 SF
■	2nd Floor - Suite 204	4,721 SF
□	<b>TOTAL CONTIGUOUS AVAILABLE</b>	<b>28,429 SF</b>

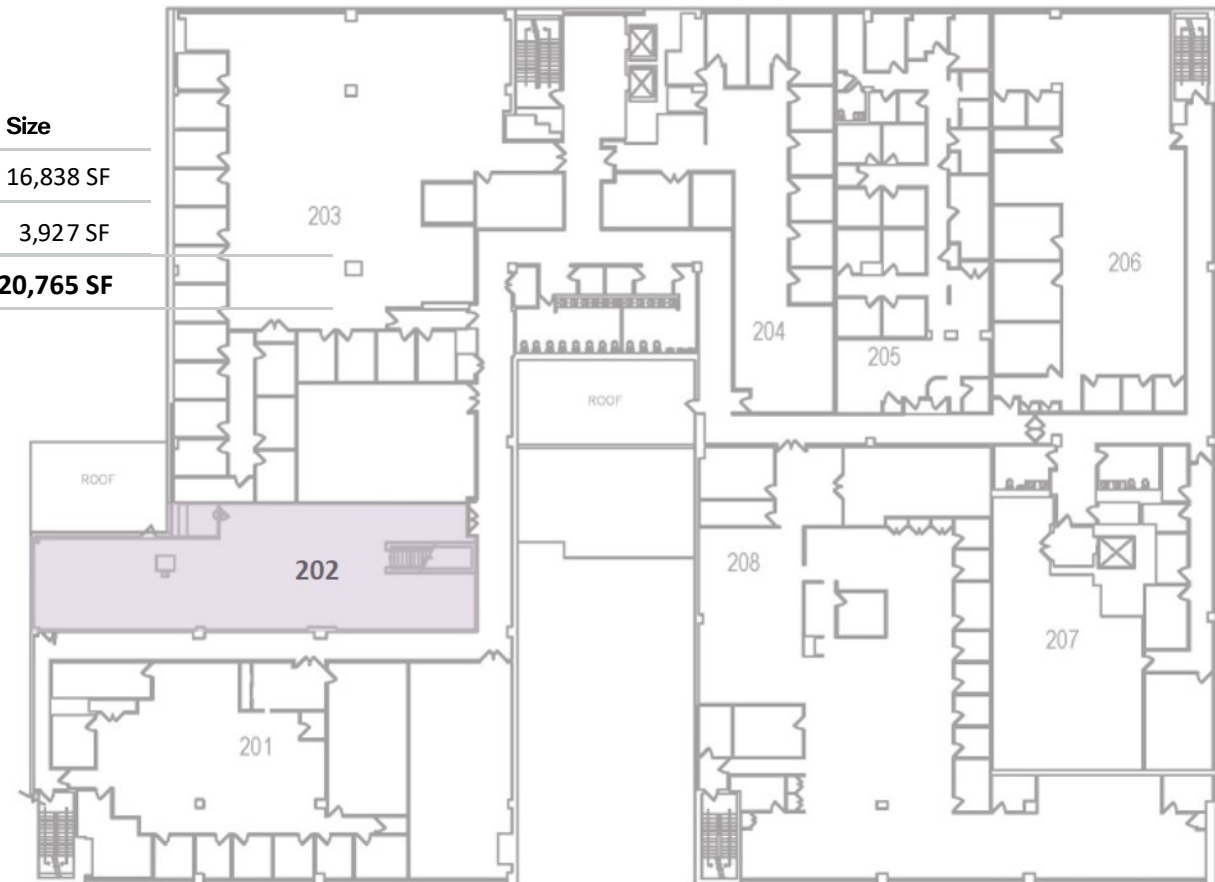
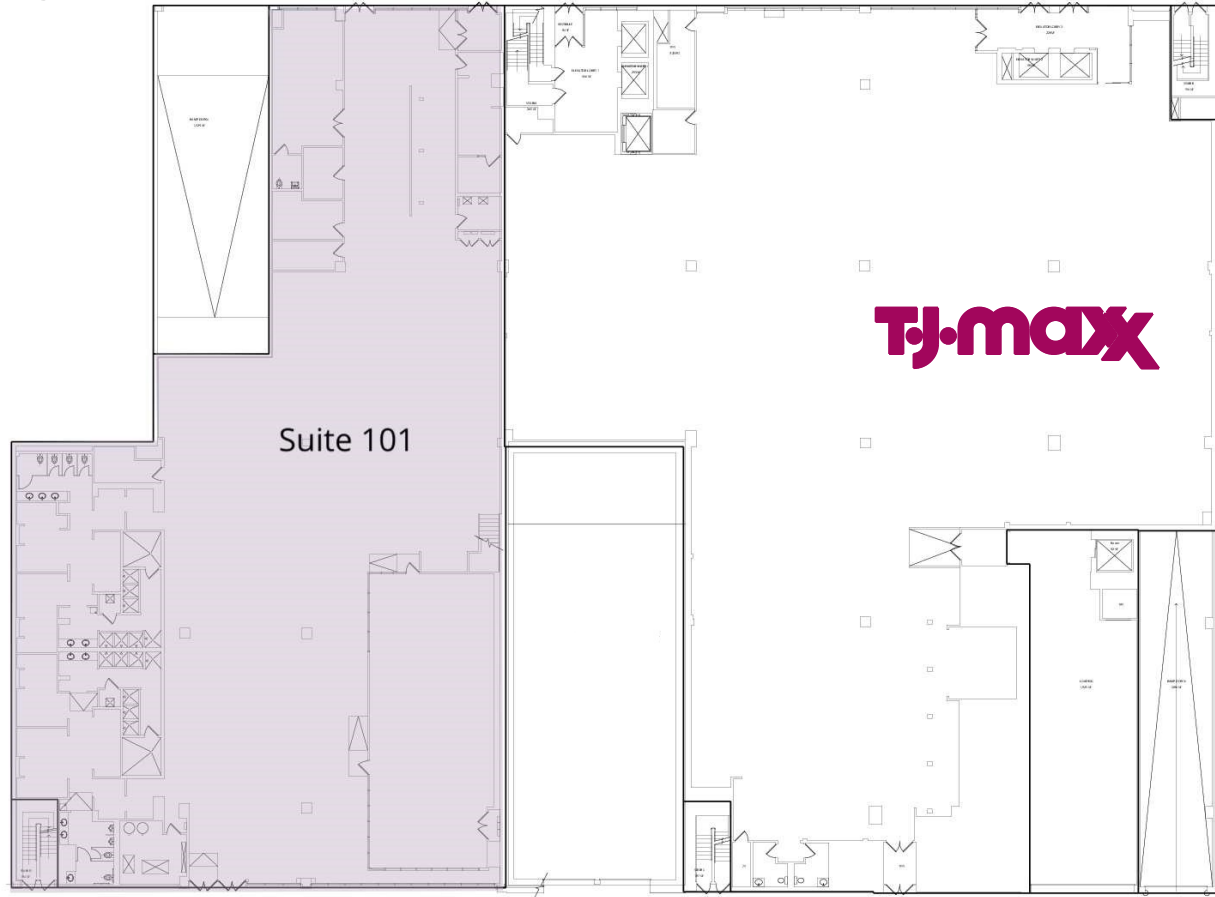
**Christina De Jesus**   **Chris Wittmann**   **Jeffrey Rosenblatt**  
917.470.1091   212.752.1041   917.543.8902  
cdejesus@lpc.com   cwittmann@lpc.com   jrosenblatt@lpc.com

**Lincoln**

# KINGSWOOD CENTER

1630 East 15th Street  
Brooklyn, NY 11229

## Retail



Suite	Size
■ 1st Floor - Suite 101	16,838 SF
■ 2nd Floor - Suite 202	3,927 SF
<b>TOTAL</b>	<b>20,765 SF</b>

**Christina De Jesus**   **Chris Wittmann**   **Jeffrey Rosenblatt**  
917.470.1091   212.752.1041   917.543.8902  
cdejesus@lpc.com   cwittmann@lpc.com   jrosenblatt@lpc.com

# Lincoln

# KINGSWOOD CENTER

## Location Overview

1630 East 15th Street | Brooklyn, NY 11229



**2023**

### Brooklyn Subway Ridership Statistics

Avg. Kings Highway Weekly Riders

# 82K

Avg. Weekday Riders

# 817.5K

Avg. Weekend Riders

# 840K

**2023 Total Riders**

# 260.2M

Demographics	0.3 Miles	0.5 Miles	1 Mile
Total Households	4,198	15,025	43,423
Total Population	11,413	41,626	124,818
Average HH Income	\$97,679	\$97,501	\$105,662

Christina De Jesus    Chris Wittmann    Jeffrey Rosenblatt  
 917.470.1091    212.752.1041    917.543.8902  
 cdejesus@lpc.com    cwittmann@lpc.com    jrosenblatt@lpc.com





# KINGSWOOD CENTER

1630 East 15th Street  
Brooklyn, NY 11229

Leasing Information:  
212.752.1041

**Christina De Jesus**  
917.470.1091  
cdejesus@lpc.com

**Chris Wittmann**  
212.752.1041  
cwittmann@lpc.com

**Jeffrey Rosenblatt**  
917.543.8902  
jrosenblatt@lpc.com

## Lincoln

Lincoln Property Company  
500 Fifth Avenue, Floor 57  
New York, NY 10110

[www.lpc.com](http://www.lpc.com)