

NEAR PARK CIRCLE

OFFICE SPACE FOR SALE OR LEASE

3200 N. CAROLINA AVE. | N. CHARLESTON, SC

Freestanding two story building in an easy-to-find location off of Spruill Avenue just minutes from the thriving Park Circle district.

[**Click Here for S.C. Agency Relationships Disclosure](#)



LANDMARK
ENTERPRISES
COMMERCIAL REAL ESTATE

Jon Chalfie | Hailey Clifton
843-345-6000 | 843-300-5209
www.landmark-enterprises.com

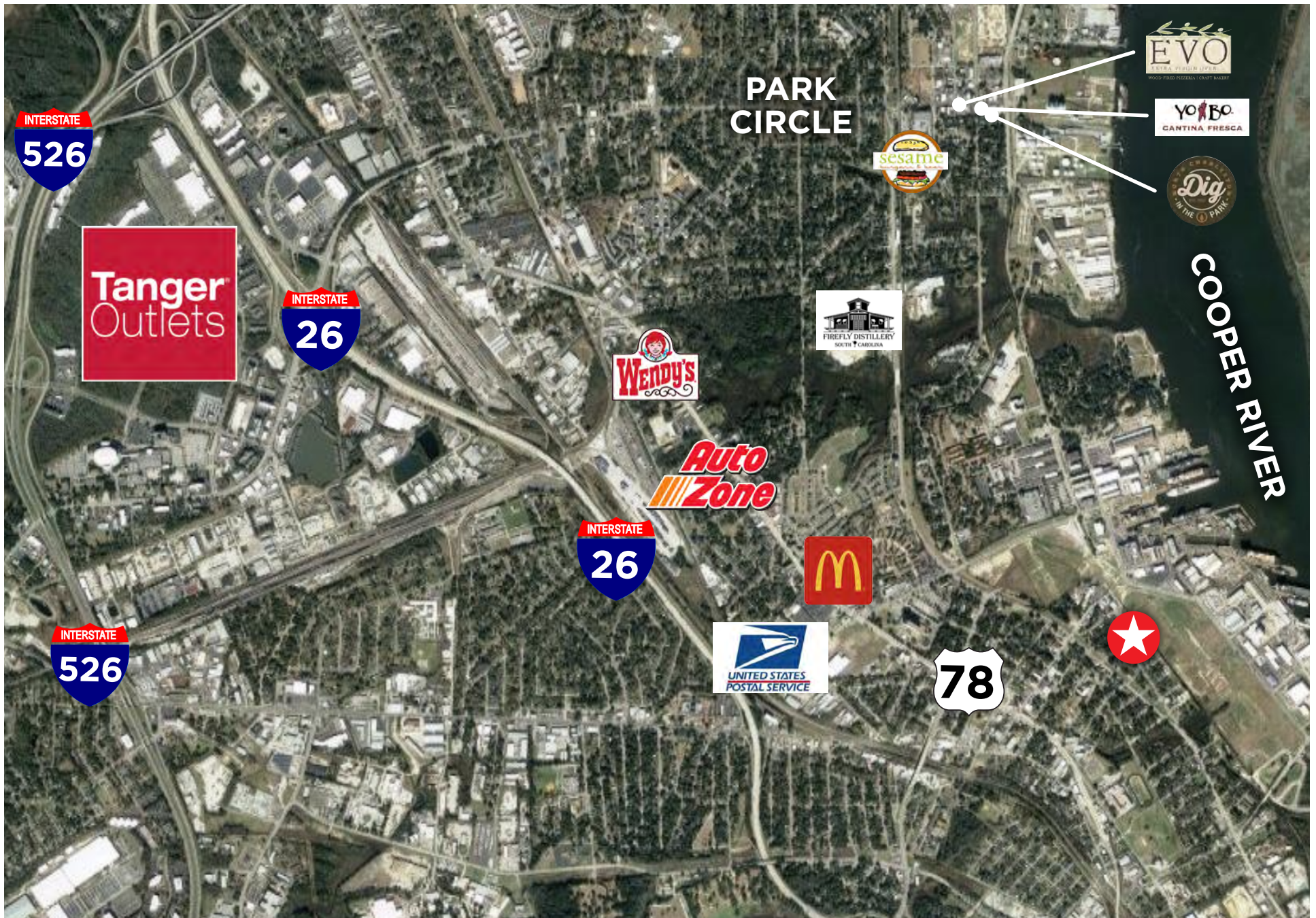
**3200 N. CAROLINA AVE.
N. CHARLESTON, SC 29405**

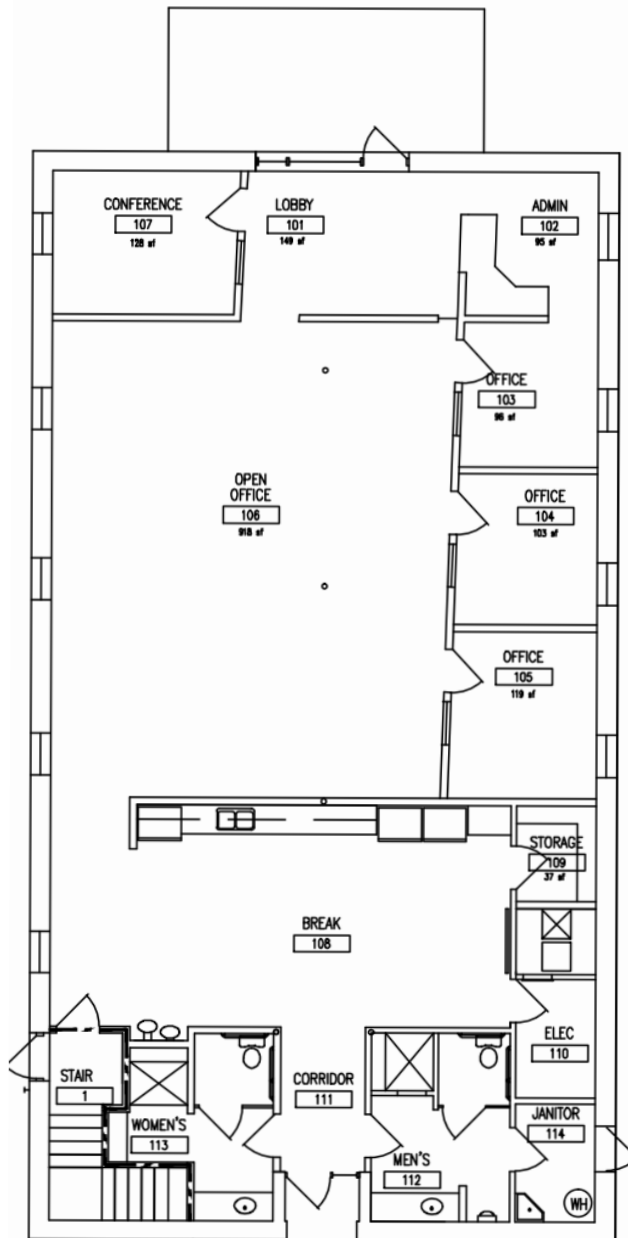
**NEAR PARK CIRCLE
OFFICE SPACE
FOR SALE
OR LEASE**

TMS #: 469-12-00-271
COUNTY: Charleston County
SIZE: 5,562 SF
SALE PRICE: \$1,800,000
LEASE PRICE: \$25.00/SF NNN

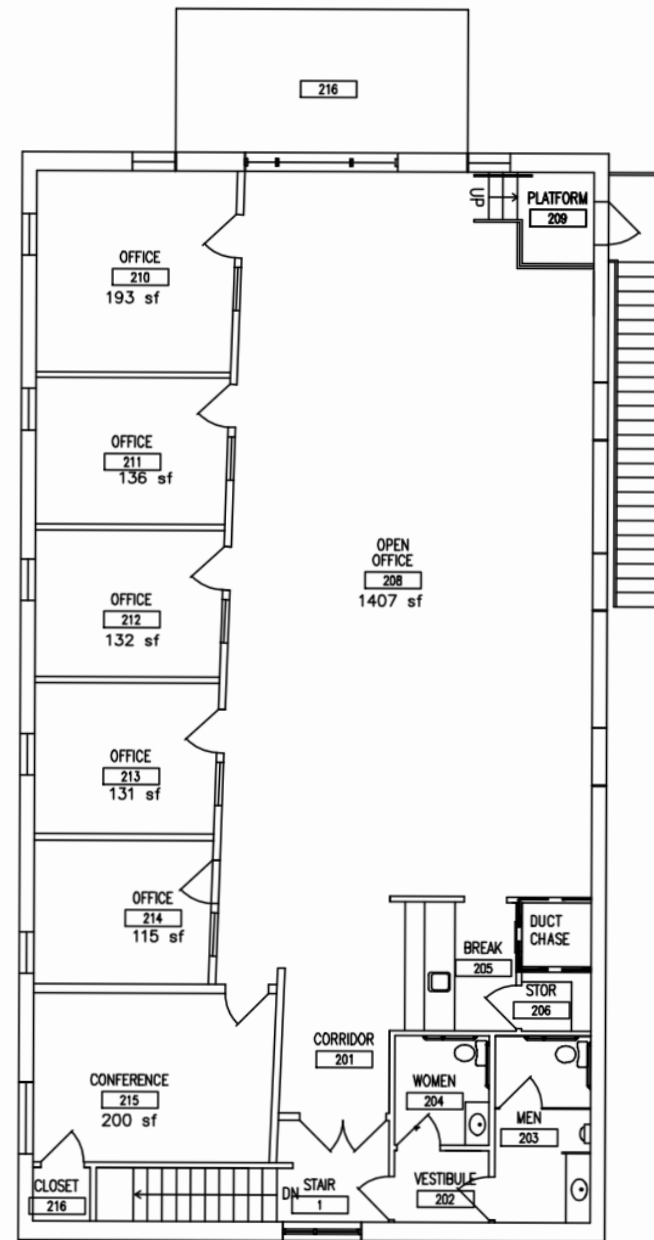
- Interior completely renovated
- The first floor includes a reception area, conference room, three private offices, an open work area, large kitchen that seats up to 20 people with pull down power and a projector. The bathrooms include a full shower in both men's & women's
- The second floor includes five private offices, a conference room, kitchen and bathrooms
- The property has an abundance of parking with over 5/1,000
- Well landscaped parking is secured by gate entry system







FIRST FLOOR

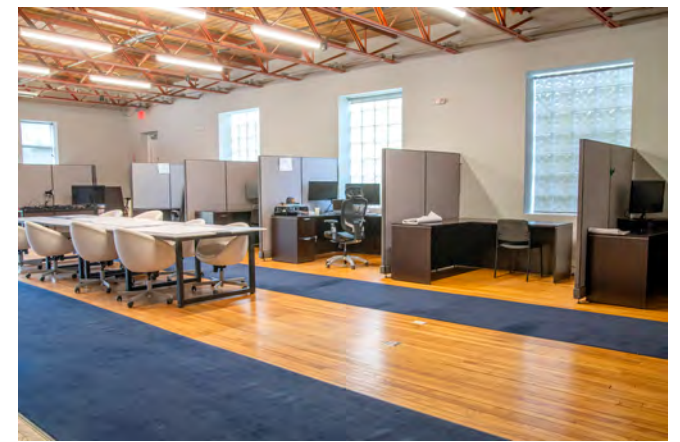


SECOND FLOOR



LANDMARK
ENTERPRISES
COMMERCIAL REAL ESTATE

3200 N. CAROLINA AVE.
NORTH CHARLESTON, SC 29405
www.landmark-enterprises.com





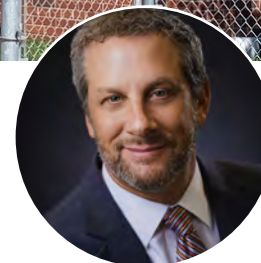


NEAR PARK CIRCLE | OFFICE SPACE

FOR SALE OR LEASE

3200 N. CAROLINA AVE. | N. CHARLESTON, SC

www.landmark-enterprises.com



Jon Chalfie
VP of Brokerage
843-345-6000



Hailey Clifton
Associate
843-300-5209



LANDMARK
ENTERPRISES
COMMERCIAL REAL ESTATE

*We obtained the information above from sources we believe to be reliable. However, we have not verified its accuracy and make no guarantee, warranty or representation about it. It is submitted subject to the possibility of errors, omissions, change of price, rental or other conditions, prior sale, lease or financing, or withdrawal without notice. We include projections, opinions, assumptions or estimates for example only, and they may not represent current or future performance of the property. You and your tax and legal advisors should conduct your own investigation of the property and transaction.