

750

RIVERPOINT DRIVE
WEST SACRAMENTO



FOR SALE OR LEASE

NEWMARK

JACK BLACKMON
jack.blackmon@nrmk.com
(916) 494-2349
CA RE License #01999561

TODD ESCHELMAN
todd.eschelman@nrmk.com
(916) 296-6890
CA RE License #01051148

SUSAN NELSON
susan.nelson@nrmk.com
(916) 865-8989
CA RE License #01413052

PROPERTY HIGHLIGHTS



100,000SF
(divisible to 25,000 SF)



Abundant parking
5:1,000



EV charging stations



Outdoor seating area
with gazebo



Loading dock



4 miles to California
State Capitol Building



Walk to dining
and shopping



1 Block from
Highway 80



15 Minutes to
UC Davis



Fully Secured
Premises



PLANNED AMENITIES

PICKLEBALL COURTS



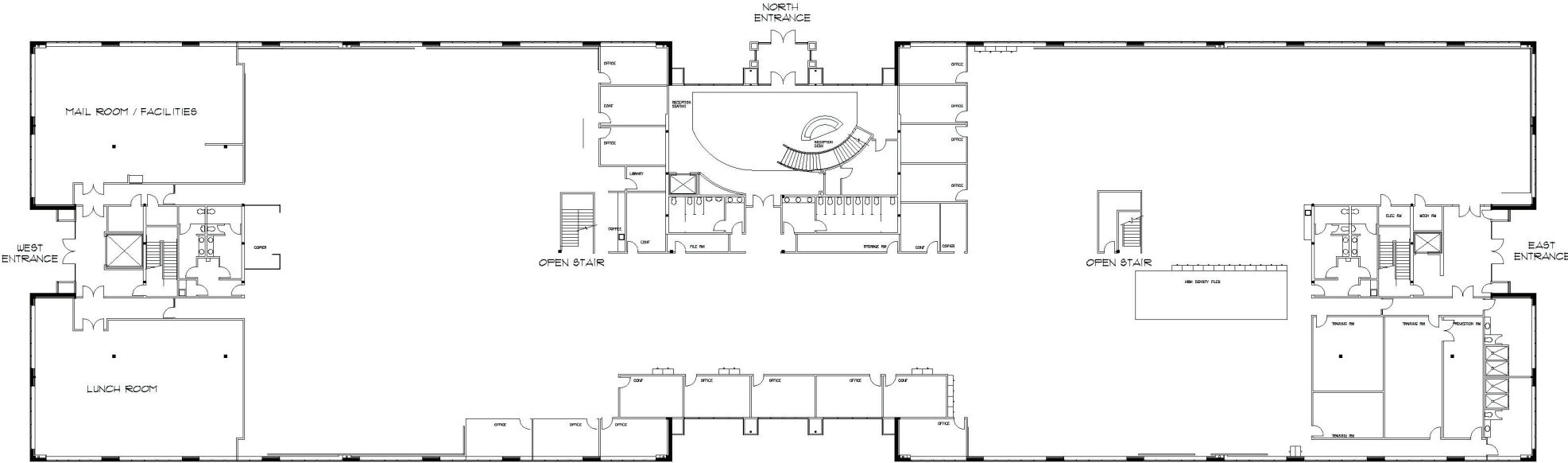
OUTDOOR SEATING/GAMES



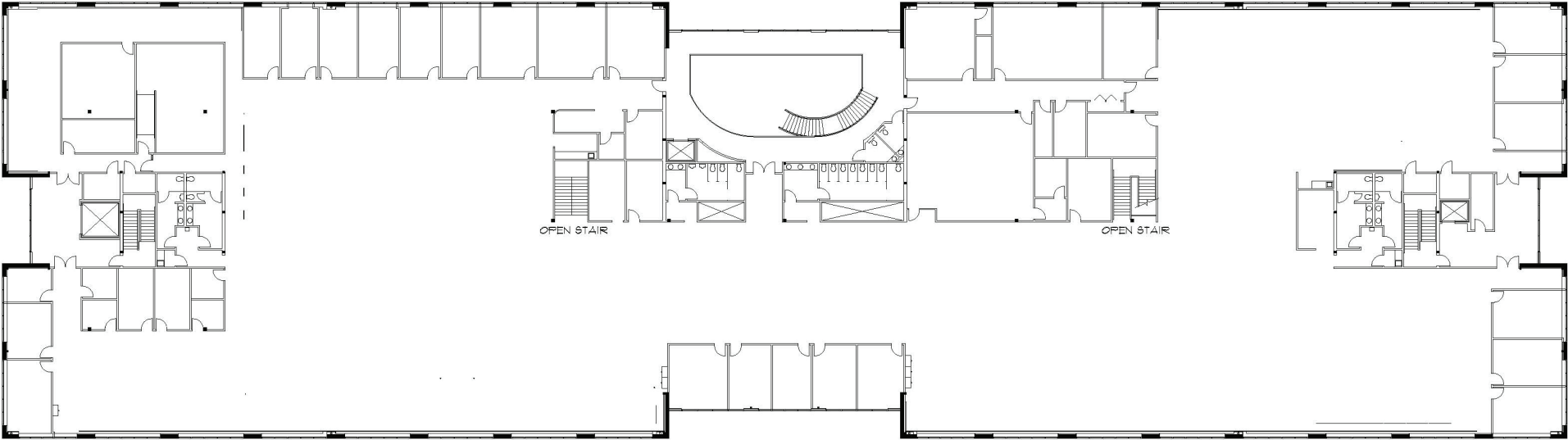
OUTDOOR AREAS



FIRST FLOOR



SECOND FLOOR



SITE PLAN



NEARBY
AMENITIES



MOD
McDonald's
IN-N-OUT BURGER
FIVE GUYS
BURGERS and FRIES
Golden1
Dutch Bros
Coffee
Shell
TACO BELL
Firestone
COMPLETE AUTO CARE



BatteriesPlus+
Burger King
BEACH HUT
Bare Bones
WORKWEAR
WINGS



750 RIVERPOINT DRIVE
WEST SACRAMENTO



REED AVENUE

RIVERPOINT DR



petco
AMERICA'S TIRE
MATTRESS FIRM
CHIPOTLE
MEXICAN GRILL
IHOP

HARBOR DR

WEST SACRAMENTO FACTS

- Incorporated in 1987, the population of West Sac is estimated at greater than 57,000 residents
- The Tower Bridge is a vertical lift bridge across the Sacramento River, linking West Sac with the City of Sacramento via Capital Mall. In 1982, the Tower Bridge was added to the National Register of Historic Places
- West Sac is the home to The Barn, a unique wooden structure with two food and beverage pods and a central vaulted shaded area. Located along the River Walk trail, it has played host to several large events including Farmers Markets and TED talks.
- Raley Field is home to the (Oakland) Athletics major league baseball team and the Sacramento River Cats (AAA affiliate of the San Francisco Giants). Raley Field was completed in 2000.
- Crossing the Tower Bridge into West Sacramento, visitors are greeted by The Ziggurat. The 10 story pyramid building was completed in 1997, and is home to the California Department of General Services.
- An addition to the growing skyline along West Sacramento's riverfront is the nearly 20 stories high headquarters of the California State Teachers' Retirement Systems. CalSTRS is the second largest public pension fund in the United States.
- The Port of West Sacramento is the region's only maritime link to international trade. The port is located in the geographical center of the City, 79 nautical miles from San Francisco with direct access to Suisun Bay via the 40 mile Deep Water Ship Channel
- The CHP Academy located in West Sacramento trains the newest officers of the California Highway Patrol.





750 RIVERPOINT DRIVE WEST SACRAMENTO

JACK BLACKMON
jack.blackmon@nmrk.com
(916) 494-2349
CA RE License #01999561

TODD ESCHELMAN
todd.eschelman@nmrk.com
(916) 296-6890
CA RE License #01051148

SUSAN NELSON
susan.nelson@nmrk.com
(916) 865-8989
CA RE License #01413052

NEWMARK

The distributor of this communication is performing acts for which a real estate license is required. The information contained herein has been obtained from sources deemed reliable but has not been verified and no guarantee, warranty or representation, either express or implied, is made with respect to such information. Terms of sale or lease and availability are subject to change or withdrawal without notice. 9395492296.06/25