



Hwy 138 SE

Miller Chapel
Rd SE



Atlanta
Land
Group



LAND FOR SALE

Miller Chapel Rd SE

Conyers, GA 30013

Jay Leslie

404.277.9191

jleslie@AtlantaLandGroup.com

John Brantley

678.350.5498

jbrantley@AtlantaLandGroup.com

PROPERTY OVERVIEW

- +/- 4.21 Acres
- Rockdale County
- Zoned AR – Agricultural Residential District
- All Utilities Available
- Gently Rolling Topography
- +/- 432 ft Frontage on Millers Chapel Rd SE
- 2 Miles from Exit 82 on I-20
- 25 miles from Downtown Atlanta

Offering Price - \$260,000 per Acre



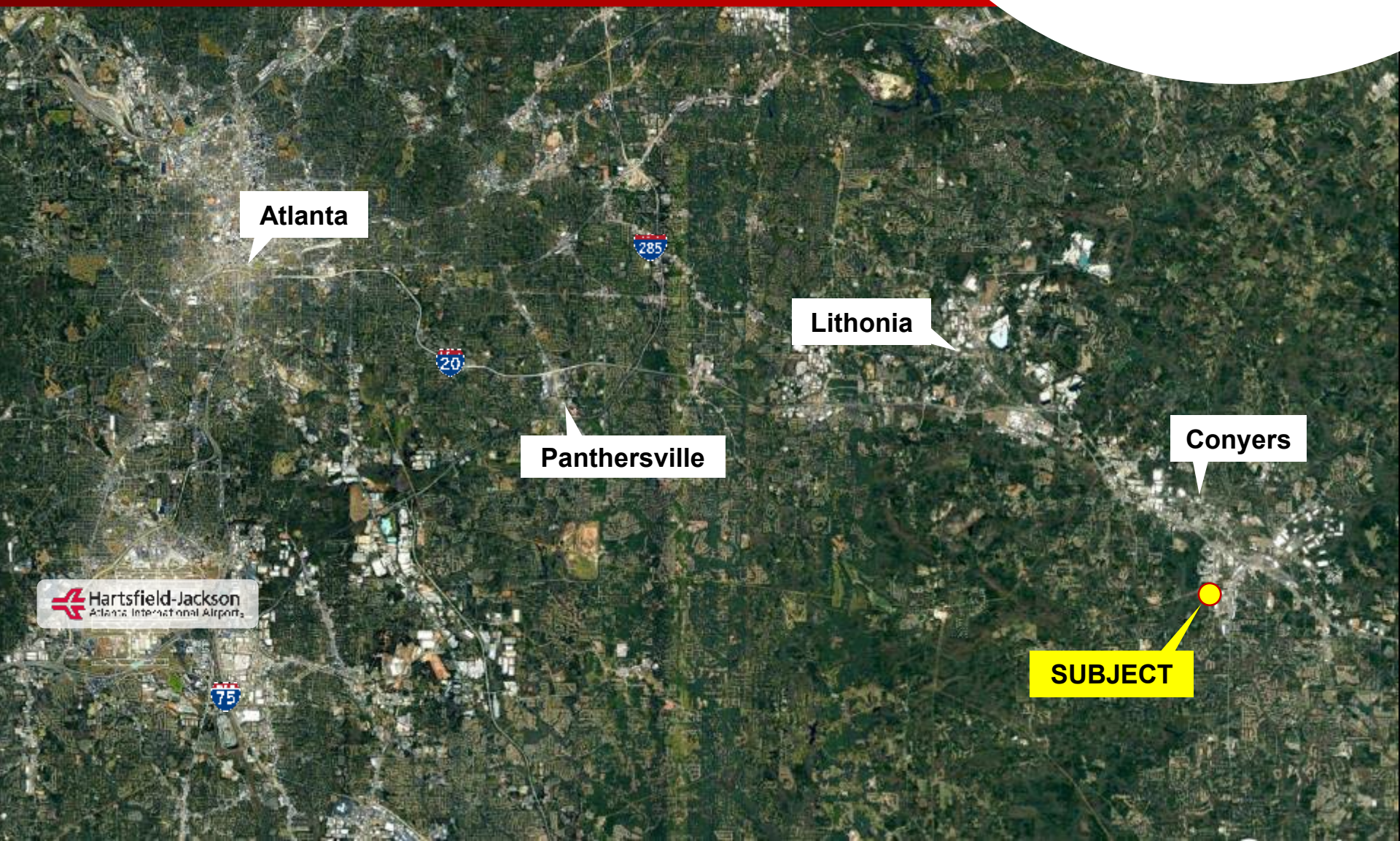
SUBMARKET AERIAL



NEW DEVELOPMENT

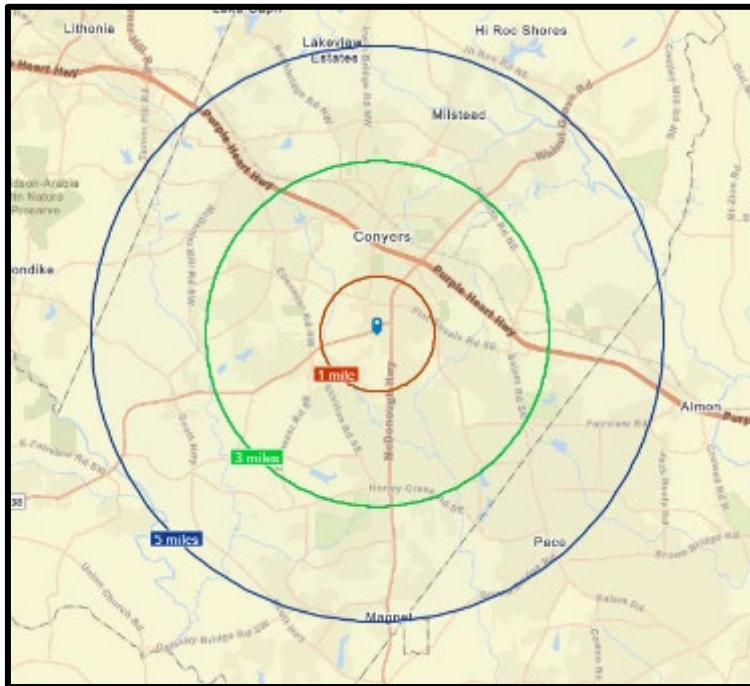


PROXIMITY MAP

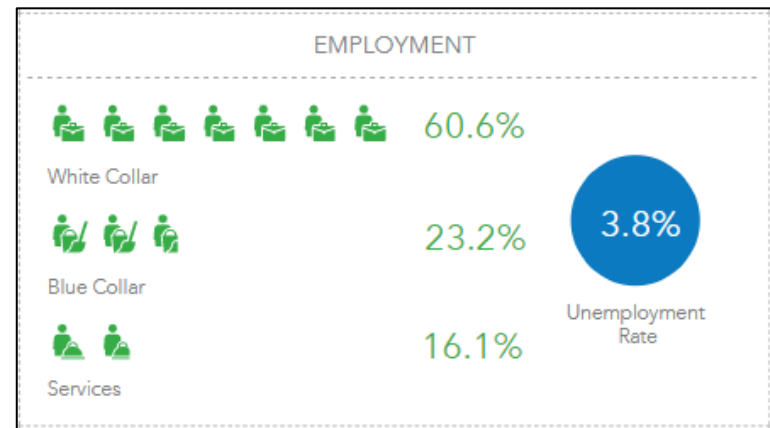


Demographics Esri 2023

	Population	# of Households	Avg Household Income	Median Age
1 Mile	3,636	1,372	\$80,214	41
1-3 Miles	35,032	12,465	\$61,573	37
3-5 Miles	56,712	19,796	\$65,958	37



1-3 Miles





Jay Leslie

404.277.9191

jleslie@AtlantaLandGroup.com



John Brantley

678.350.5498

jbrantley@AtlantaLandGroup.com

