

Luminis Health Medical Portfolio

**Dominic
Digiovannantonio**
+1 443 452 1505
dom.digi@jll.com

**Rob
Freedman**
+1 410 952 9444
rob.freedman@jll.com

**Gary
Applestein**
+1 410 404 3196
gary.applestein@jll.com



Sajak Pavilion

Anne Arundel Medical Center

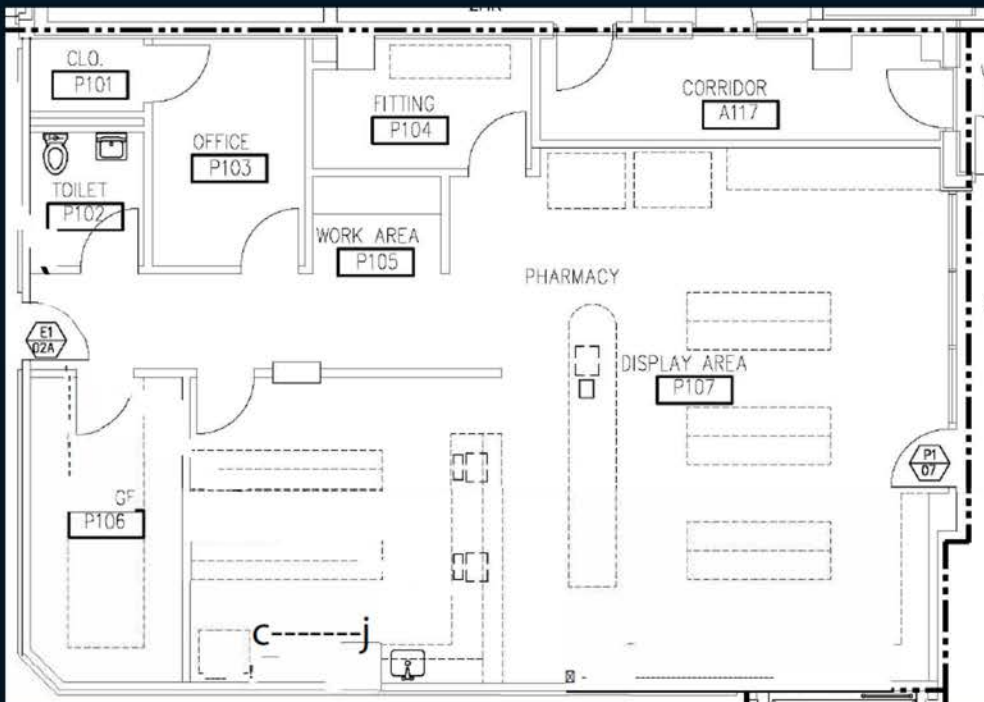
2002 Medical Parkway

Annapolis, MD 21401



Availabilities

- 1st Floor - Suite 170 - 1,738 RSF



Suite 170 - 1,738 RSF

Belcher Pavilion

Anne Arundel Medical Center

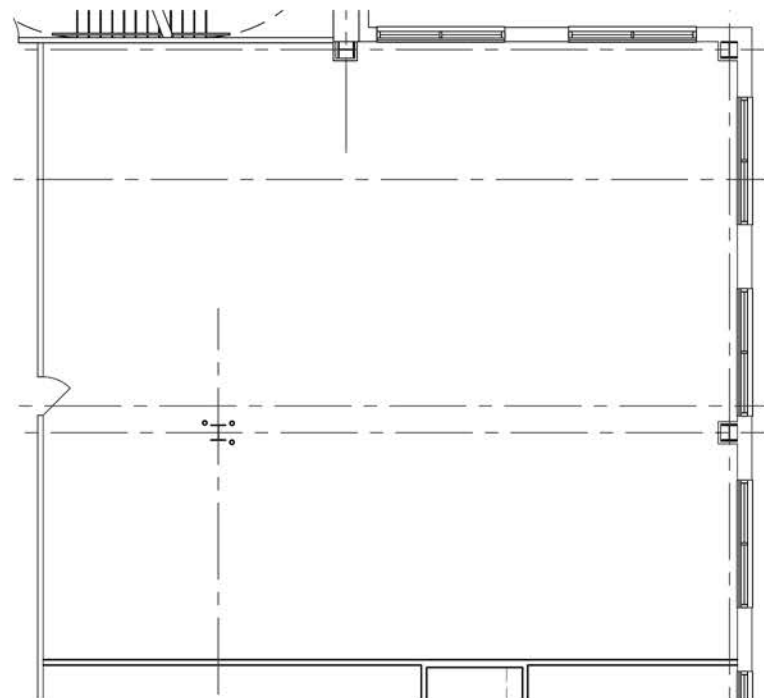
2000 Medical Parkway

Annapolis, MD 21401



Availabilities

- 4th Floor – Suite 404 - 17,564 RSF
- Suite 601 – Shell Space - 2,625 RSF



Suite 601 - 2,625 RSF

Belcher Pavilion

Anne Arundel Medical Center

2000 Medical Parkway

Annapolis, MD 21401

Suite 404 - 17,564 RSF



Kent Island Pavillion

Anne Arundel Medical Center

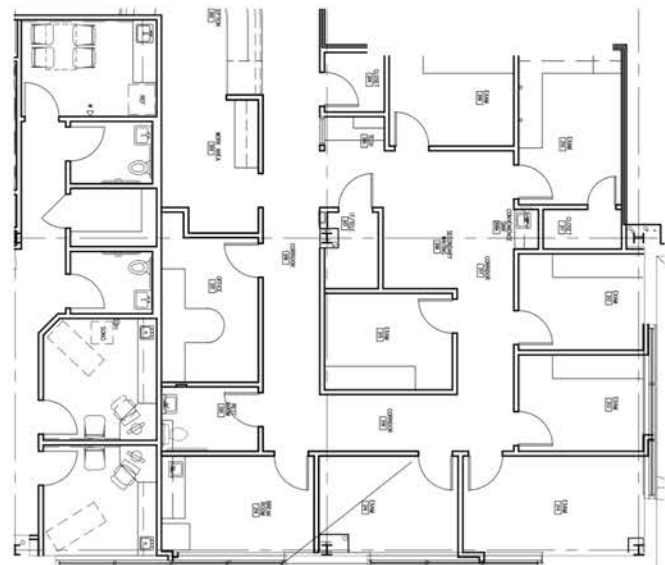
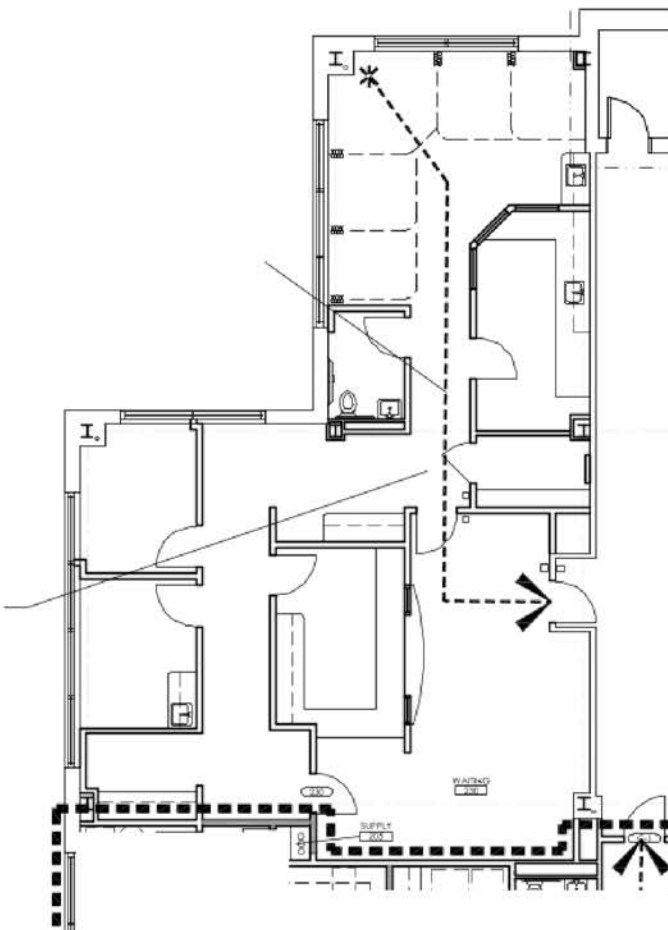
1630 Main Street

Chester, MD 21619

Availabilities

- 2nd Floor – Suite 204 - 2,151 RSF
- 2nd Floor – Suite 210 - 2,940 RSF
- 2nd Floor – Suite 215 - 3,217 RSF

Suite 204 - 2,151 RSF

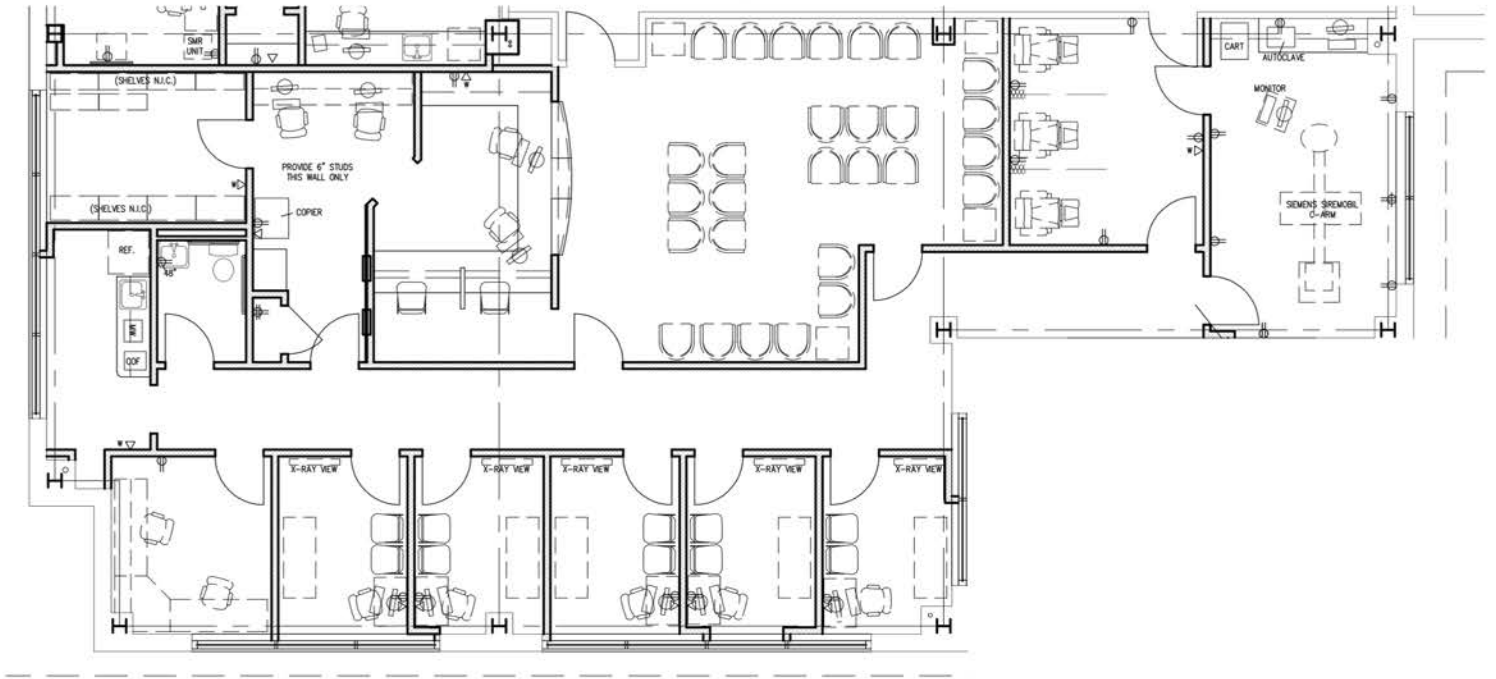


Suite 210 - 2,940 RSF

Kent Island Pavillion

Anne Arundel Medical Center

Suite 215 - 3,217 RSF



Bowie Pavillion

Anne Arundel Medical Center

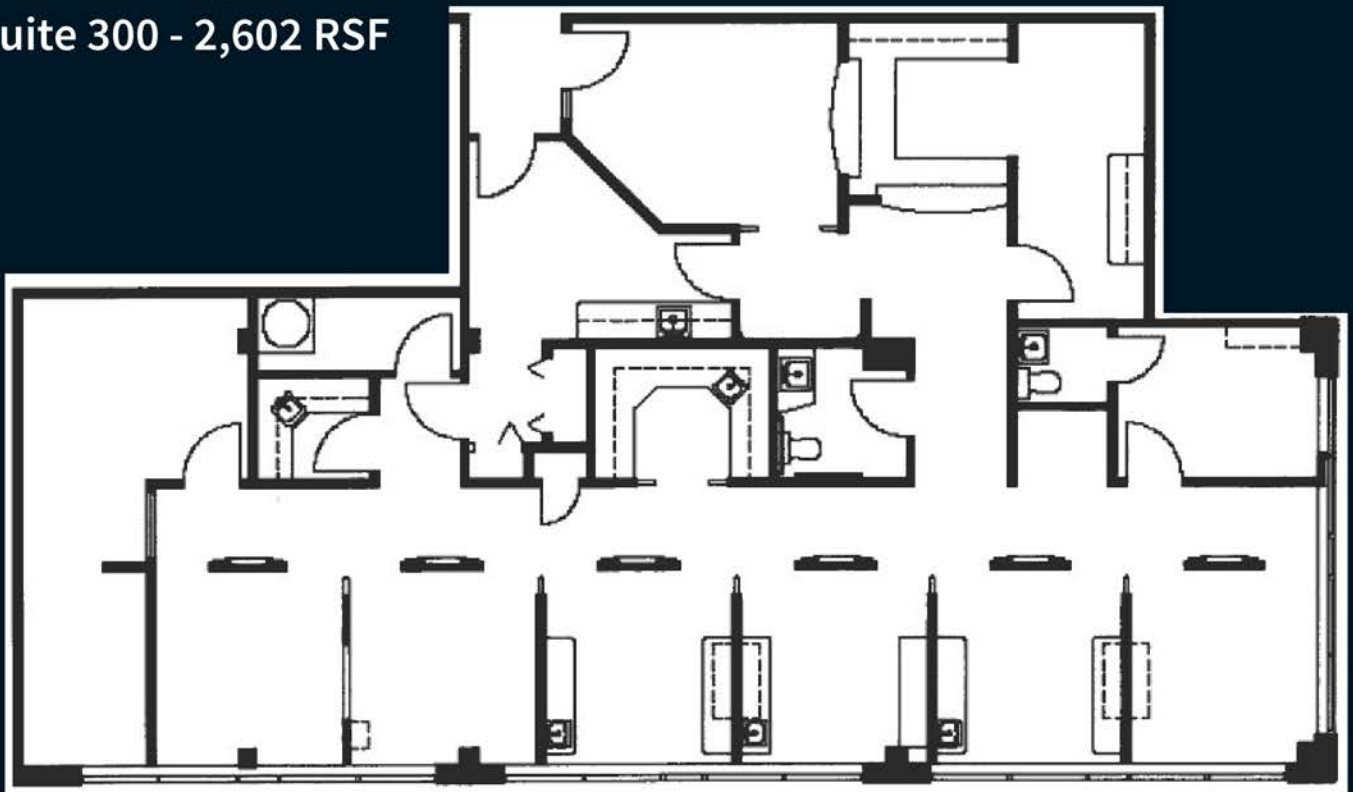
4175 Hanson Court

Bowie, MD 20716



Availabilities

- Suite 104 - 1,500 SF
- Suite 300 - 2,602 RSF



Suite 300 - 2,602 RSF



**Dominic
Digiovannantonio**
+1 443 452 1505
dom.digi@jll.com

**Rob
Freedman**
+1 410 952 9444
rob.freedman@jll.com

**Gary
Applestein**
+1 410 404 3196
gary.applestein@jll.com