

INDUSTRIAL SPACE AVAILABLE

1018 Cadillac St Syracuse NY 13208



PROPERTY DETAILS

Building SF	6,363
Lease Rate:	Negotiable
Dock Doors:	1 Door (10x12)
Roof:	Rubber
Zoning:	Industrial
Parking:	12 Spots
Electric:	3 Phase 480V
Clear Height	13ft

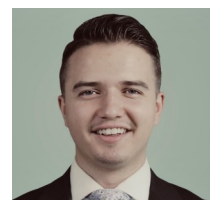
PROPERTY SUMMARY

Presenting a prime leasing opportunity—a meticulously maintained 6,363 square foot industrial warehousing building. This space accommodates diverse tenant uses, from manufacturing to distribution. The well-positioned loading dock ensures seamless truck access. The interior, featuring a removable small office portion, allows for customizable layouts tailored to specific requirements. The roof, electrical systems, and HVAC are all in working order. Our dedicated development team stands ready to collaborate on a build-to-suit approach. Call us to schedule a tour.

Josh Williams

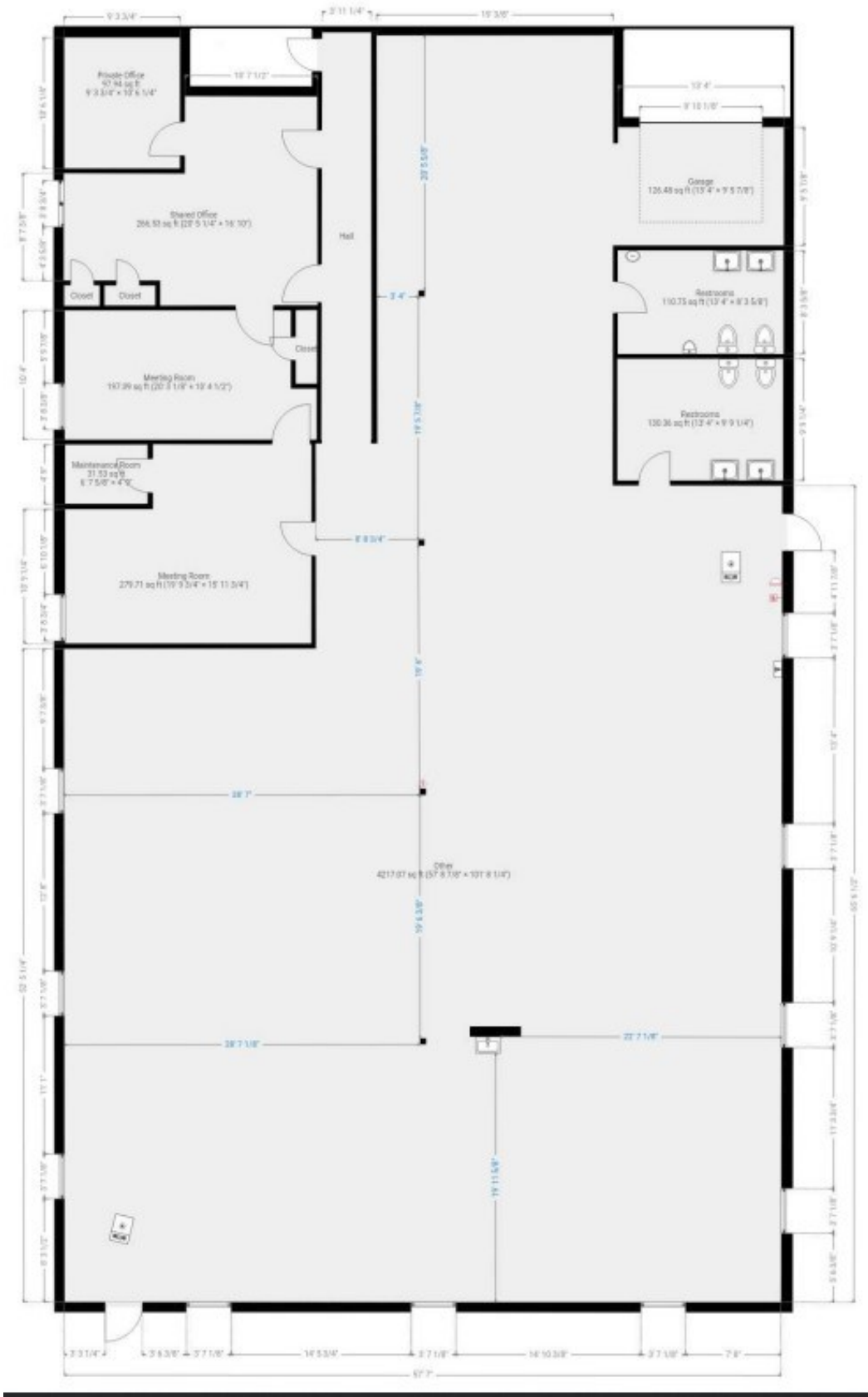
1.315.949.4193

Josh @IronhornEnterprises.com



INDUSTRIAL SPACE AVAILABLE

1018 Cadillac St Syracuse NY 13208



INDUSTRIAL SPACE AVAILABLE

1018 Cadillac St Syracuse NY 13208

