

Retail For Sale



Woodward Commercial Realty, Inc.

4763 Rosebud Lane Newburgh, IN 47630 | 812-474-1900

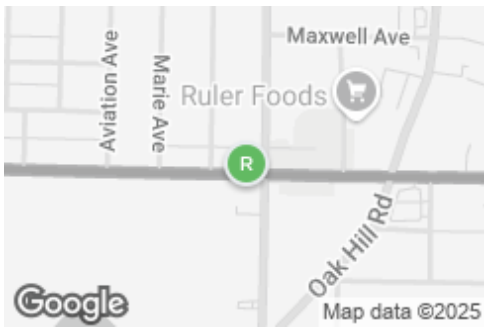
Service Station

1929 E Morgan Ave, Evansville, IN, 47711

Retail: Freestanding For Sale

Prepared on September 11, 2025

1 of 1 Listings



Listing Details | Retail For Sale

Total Available Space	1,934 SF
Asking Price	\$299,000
Listing Price Per SF	\$154.60
Cap Rate (Actual)	-
Signage	On Building
Vacant	-

Available Date	Now
Days On Market	98 days
Date Listed	6/05/2025
Last Modified	9/11/2025
Listing ID	42752816
Parking Spaces	-

Description

Located at the corner of Morgan Ave. & Weinbach Ave. this 1934 SF retail space was formerly home to a service/convenience store. Close to Hwy 41, schools, businesses and residential.

- Lot Size: 132 x 151
- Phase 1 completed
- Lifts & Tanks removed
- Zoned C-4

Property Features

Location Details

Address	1929 E Morgan Ave, Evansville, IN, 47...
Zoning	C-4
County	Vanderburgh

Parcels	09-220-12-085-013
Name	1929 E Morgan Ave

Building Details

Sub Type	Freestanding
Building Status	Existing
Building Size	1,934 SF
Land Size	0.43 Acres / 18,820 SF
Number of Buildings	1
Number of Floors	1
Year Built	1955
Primary Constr. Type	Framed
Occupancy Type	Single Tenant

Parking Spaces	-
Parking Ratio	-
Air Conditioned	Yes
Heated	Yes
Electricity	Yes
Water	Yes
Sanitary Sewer	Yes
Natural Gas	Yes

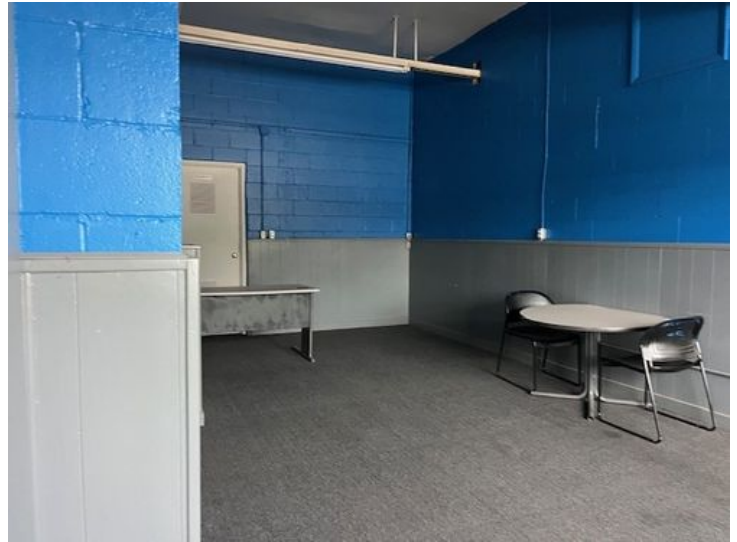
Property Listings

1 Listing | 1,934 SF | \$299,000

Type	Condo	Space Use	Suite	Available Space	Rate	Available
For Sale	-	Retail	-	1,934 SF	\$299,000	Now

Additional Photos





Contact



Susan Racine
812-474-1900
sracine@woodwardrealty.com



Woodward Commercial Realty, Inc.