

**435 DOLLEY MADISON RD.**  
**GREENSBORO, NC**

**4,459 SF**  
(may be divided)

**Available 1/1/26**

**FOR  
LEASE**

# GUILFORD VILLAGE SHOPPING CENTER

## PROPERTY HIGHLIGHTS

- Convenient neighborhood center located near Guilford College with a variety of retailers and restaurants in mixed use development
- Tenant uses include salon, entertainment, dining and personal services
- Easy access with parking surrounding the center
- Minutes from Greensboro Urban Loop, Greensboro CBD and Piedmont Triad International Airport

## DEMOGRAPHICS

	1 Mile	3 Miles	5 Miles
Total Population	10,685	59,890	163,966
Total Households	5,190	27,049	70,686
Total HH Income	\$66,472	\$80,896	\$85,259

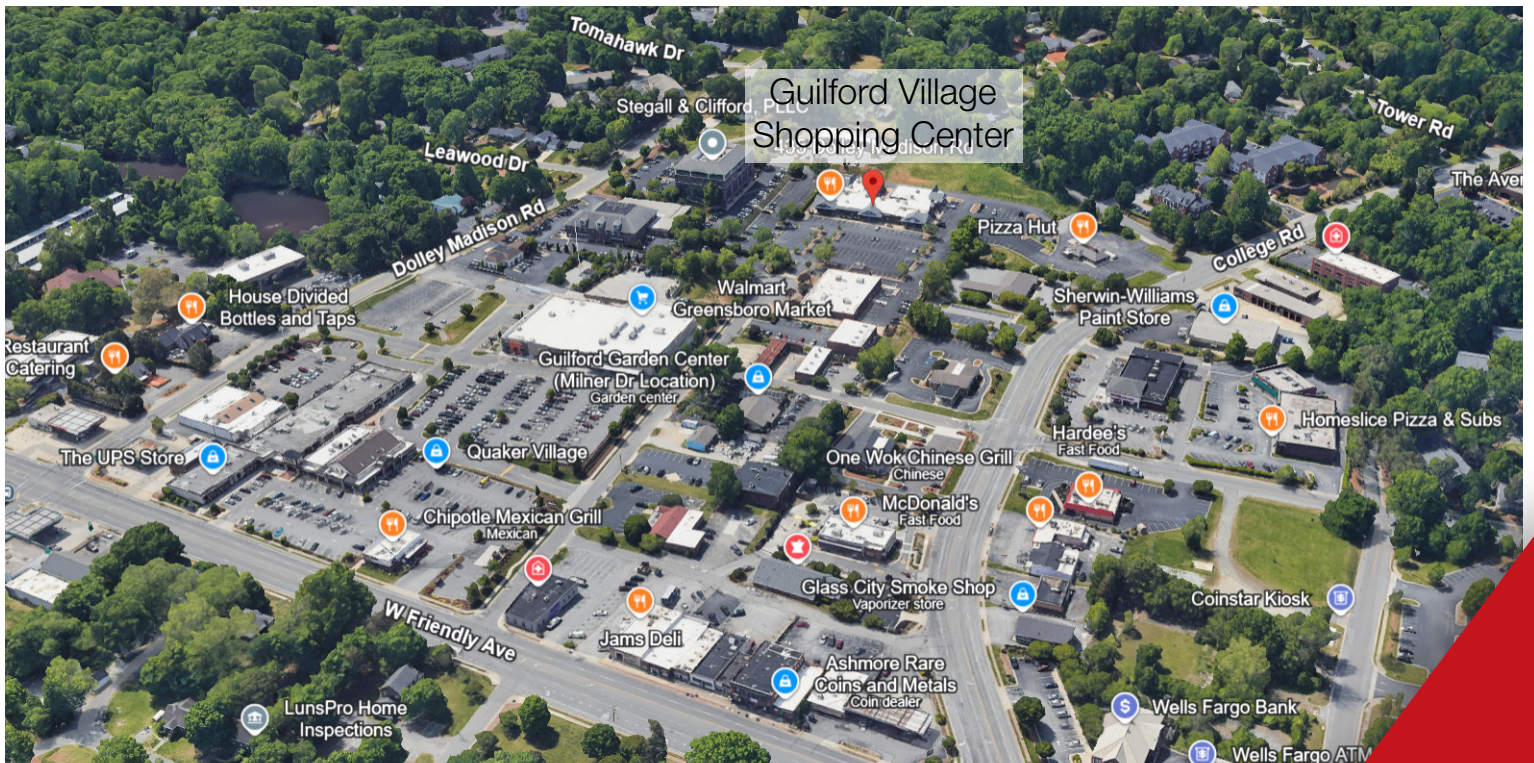
**Please Call for Pricing**

**NAI Piedmont Triad**  
Commercial Real Estate Services, World Wide

**NANCY COX**  
BROKER  
336.686.5388  
ncox@naipt.com

348 N. Elm Street • Greensboro, NC 27401 • naipt.com





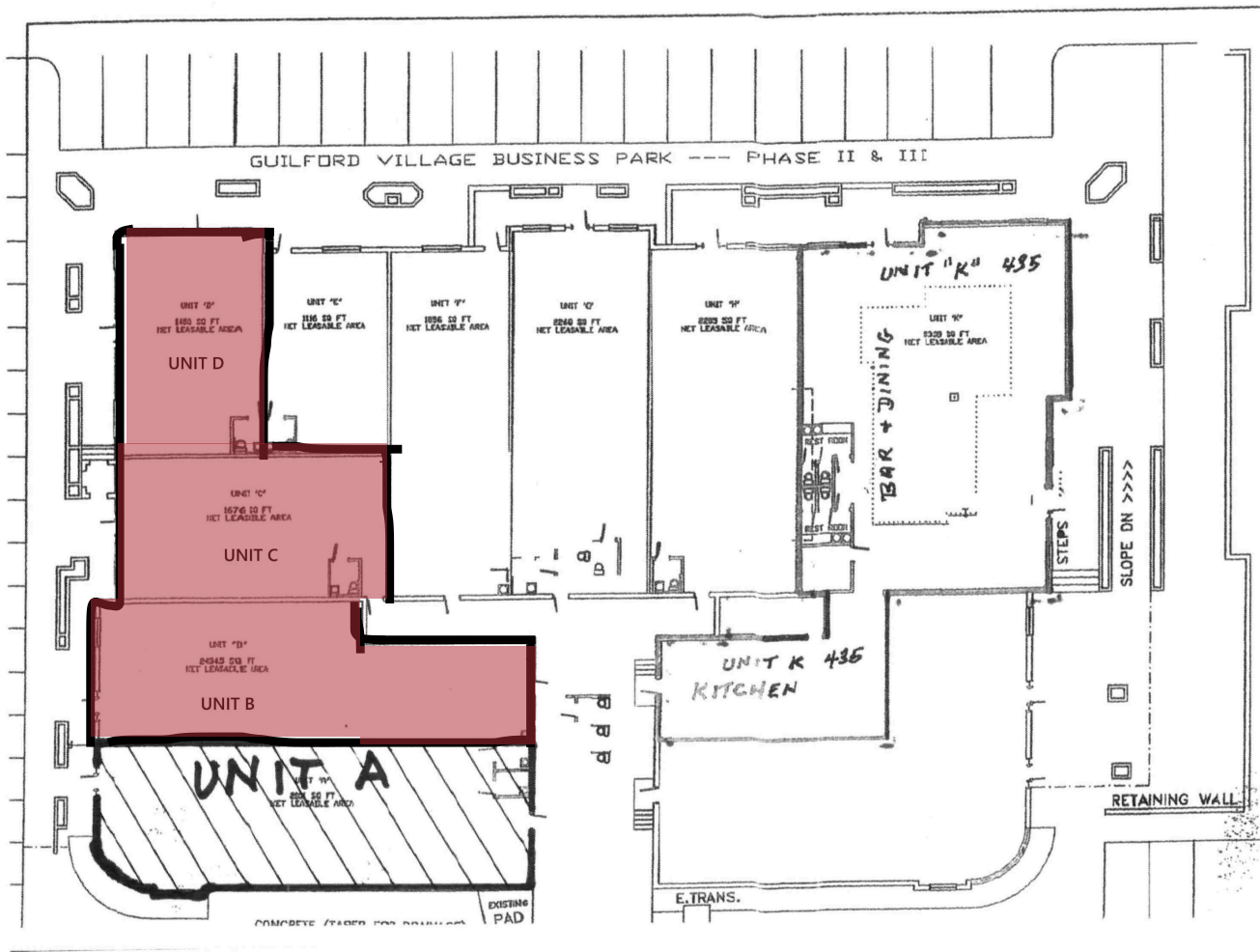
This material may contain content generated with AI assistance and publicly sourced data. NAI Piedmont Triad makes every effort to verify the information but makes no warranties or representations regarding the accuracy, completeness, or reliability of the information. Independent verification of all details is strongly encouraged. Prices, terms, and availability are subject to change without prior notice.

**NANCY COX**  
BROKER  
336.686.5388  
ncox@naipt.com

348 N. Elm Street • Greensboro, NC 27401 • naipt.com



# UNIT B, C, D - 4,459 SF



This material may contain content generated with AI assistance and publicly sourced data. NAI Piedmont Triad makes every effort to verify the information but makes no warranties or representations regarding the accuracy, completeness, or reliability of the information. Independent verification of all details is strongly encouraged. Prices, terms, and availability are subject to change without prior notice.

**NANCY COX**  
BROKER  
336.686.5388  
ncox@naipt.com

348 N. Elm Street • Greensboro, NC 27401 • naipt.com