



1161 N VERMONT AVE, LOS ANGELES, CA 90029

**RETAIL SPACE AVAILABLE**



OFFERING MEMORANDUM





## ● SITE DESCRIPTION

1161 N Vermont Ave offers a rare opportunity to lease a highly visible commercial property in one of Los Angeles' most dynamic neighborhoods. Situated in prime East Hollywood, the property enjoys a premier location along busy North Vermont Avenue with 80 feet of street frontage and exceptional exposure to both vehicular and pedestrian traffic.

The spacious interior boasts soaring 25-foot ceilings and an open, flexible floor plan that can accommodate a variety of uses—including creative office, retail, event space, or showroom. Surrounded by strong demographics and constant foot traffic, the property is ideally positioned for tenants looking to establish a flagship presence in a vibrant, high-growth corridor just minutes from Sunset Boulevard and the 101 Freeway.

This is a unique chance to lease a versatile commercial space in a core Los Angeles submarket with long-term growth potential.



# FOR LEASE



**PROPERTY TYPE**  
Retail

**AVAILABLE SPACE**  
7,059 SF

**LOT**  
7,885 SF



# PROPERTY HIGHLIGHTS

- Prime East Hollywood Location – Situated on North Vermont Ave
- Excellent visibility and approximately 80 feet street frontage
- Strong traffic and demographic counts
- Expansive Interior with approximately 25-Foot Ceilings and Open Layout
- Equipped with 12 Ft Hood

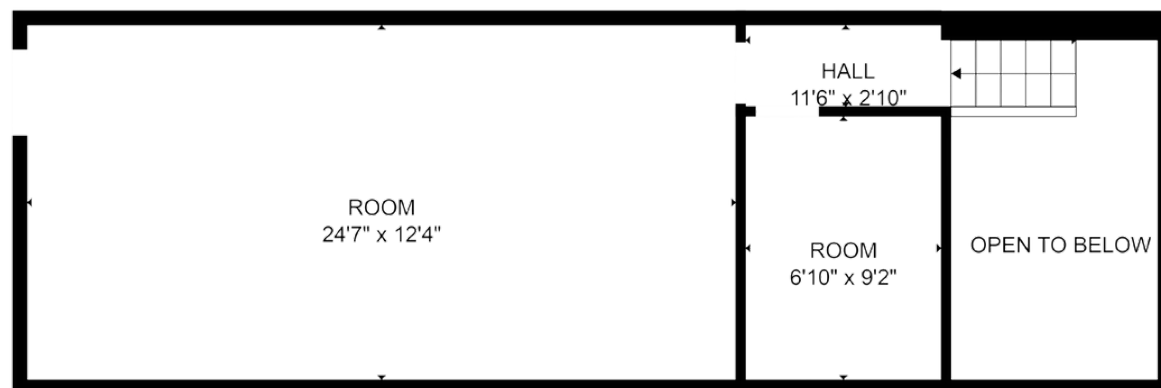




## Floor 1

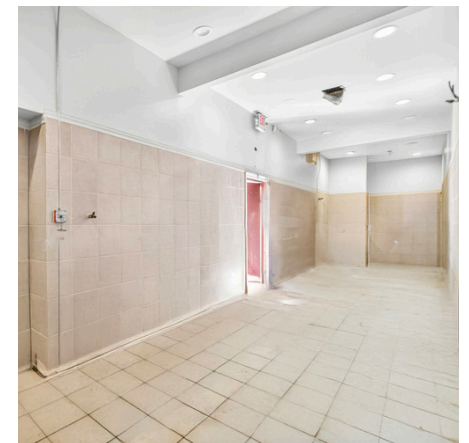
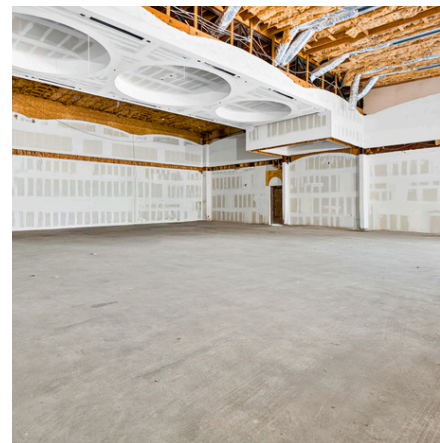


## Floor 2





# PROPERTY PHOTOS



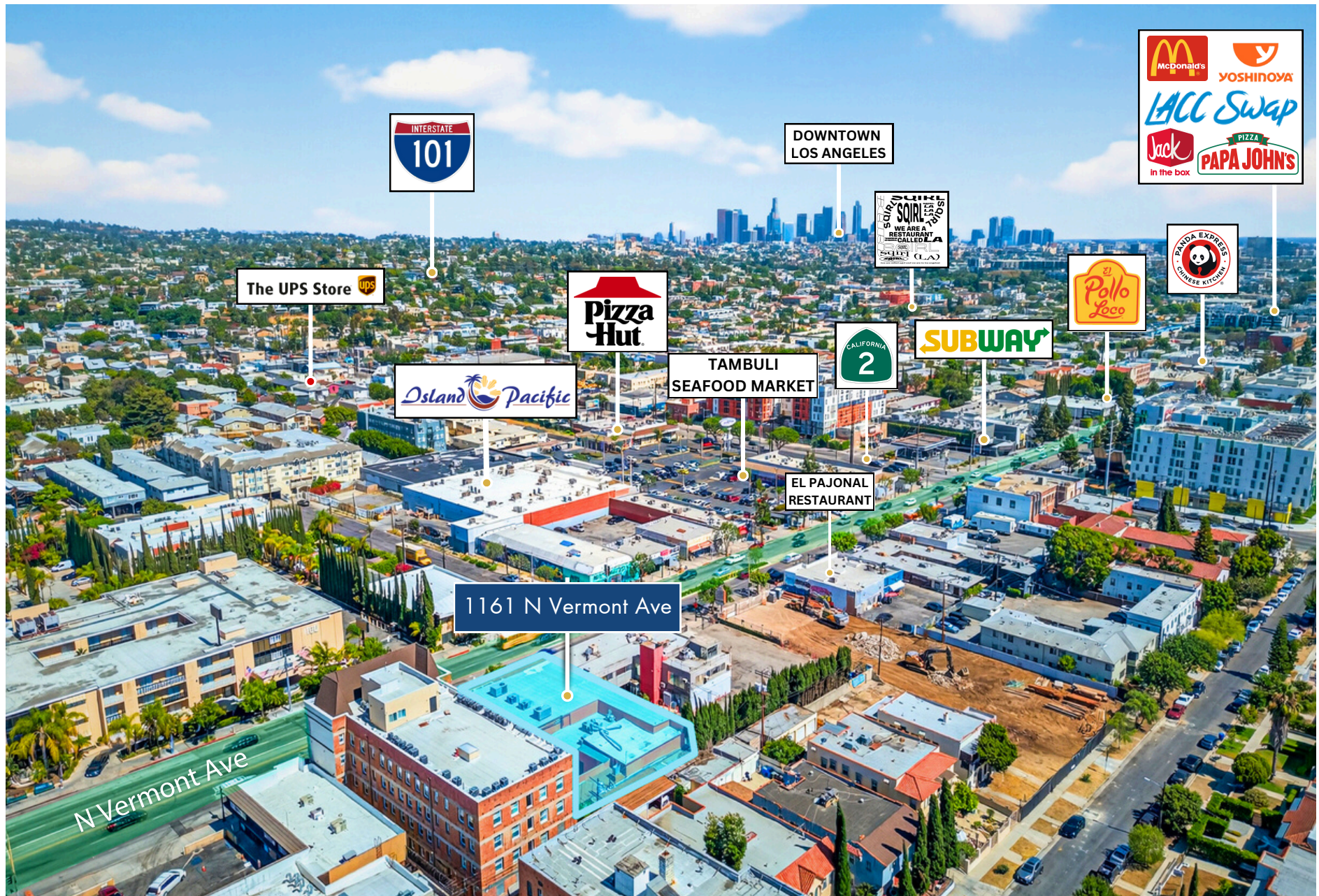


## PROPERTY PHOTOS



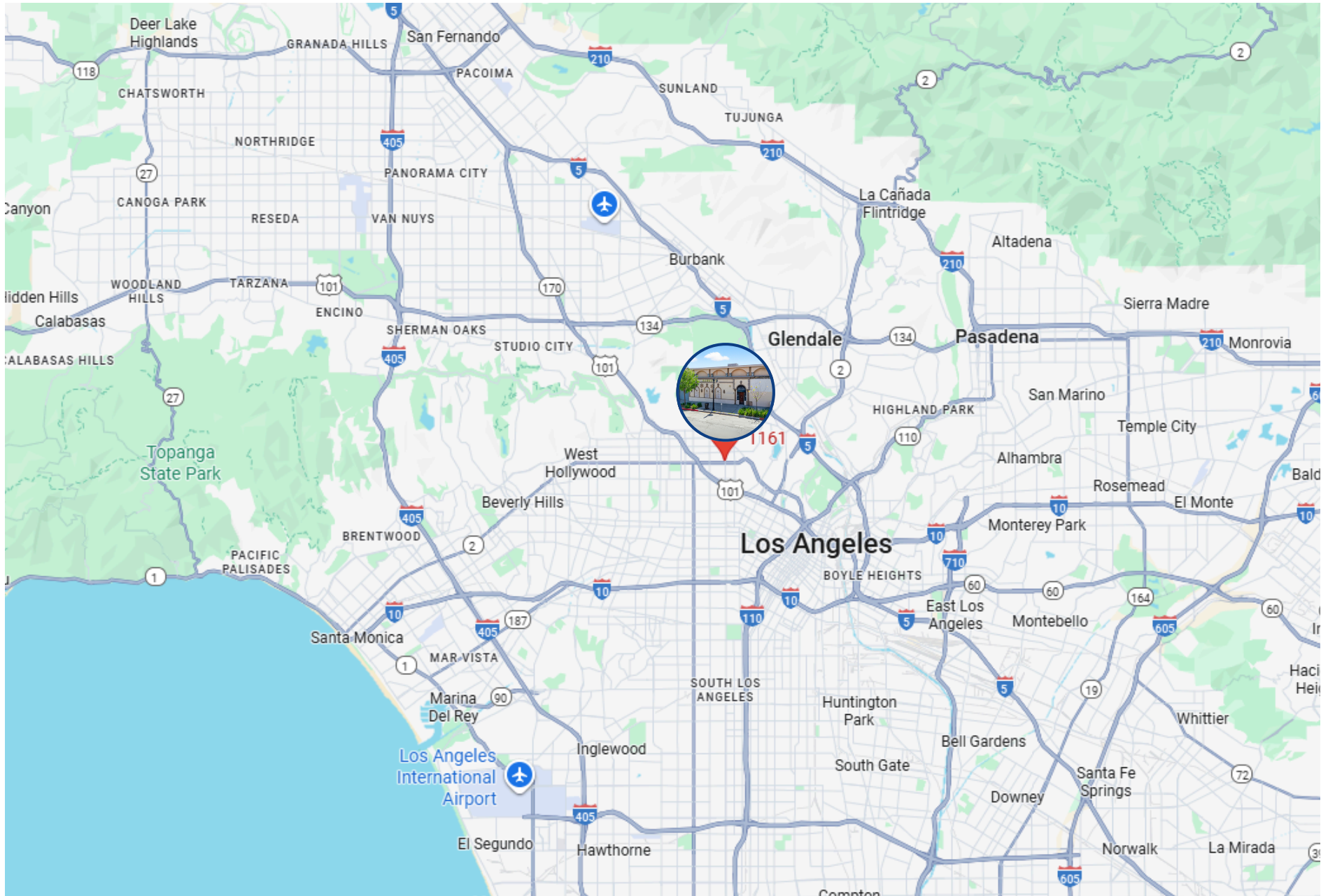


# RETAIL MAP





# LOCATION MAP







Category	1 Mile	3 Mile	5 Mile
2024 Total Population	69,464	481,459	1,053,062
2029 Population	67,876	471,510	1,027,879
Pop Growth 2024-2029	-2.29%	-2.07%	-2.39%
Average Age	40.20	39.30	39.60
2024 Total Households	29,667	208,462	451,692
HH Growth 2024-2029	-2.54%	-2.19%	-2.43%
Median Household Income	\$55,985	\$57,215	\$61,304
Avg Household Size	2.20	2.20	2.20
2024 Avg HH Vehicles	2	2	2
Median Home Value	\$1,035,678	\$1,050,847	\$1,004,642
Median Year Built	1954	1961	1962



The information contained in the following listing is proprietary and strictly confidential. It is intended to be reviewed only by the party receiving it from IKON Properties and it should not be made available to any other person or entity without the written consent of IKON Properties. By taking possession of and reviewing the information contained herein the recipient agrees to hold and treat all such information in the strictest confidence. The recipient further agrees that the recipient will not photocopy or duplicate any part of the email content. If you have no interest in the subject property, please promptly delete this email. This email has been prepared to provide summary, unverified financial and physical information to prospective purchasers, and to establish only a preliminary level of interest in the subject property. The information contained herein is not a substitute for a thorough due diligence investigation. IKON Properties has not made any investigation, and makes no warranty or representation with respect to the income or expenses for the subject property, the future projected financial performance of the property, the size and square footage of the property and improvements, the presence or absence of contaminating substances, PCBs or asbestos, the compliance with local, state and federal regulations, the physical condition of the improvements thereon, or financial condition or business prospects of any tenant, or any tenant's plans or intentions to continue its occupancy of the subject property. The information contained in this offering memorandum has been obtained from sources we believe are reliable; however, IKON Properties has not verified, and will not verify, any of the information contained herein, nor has IKON Properties conducted any investigation regarding these matters and makes no warranty or representation whatsoever regarding the accuracy or completeness of the information provided. All potential buyers must take appropriate measures to verify all of the information set forth herein. Prospective buyers shall be responsible for their costs and expenses of investigating the subject property.







**BLAS FERNANDEZ**  
DIRECTOR, COMMERCIAL INVESTMENTS

818.319.9191  
blas@ikonpropertiesla.com  
ikonpropertiesla.com  
LIC NO. 02012036



**BRIAN VU**  
SENIOR INVESTMENT ASSOCIATE

818.913.8819  
brian@ikonpropertiesla.com  
ikonpropertiesla.com  
LIC NO. 02181861