

29485 LORIE LANE
WIXOM, MICHIGAN



**SIGNATURE
ASSOCIATES**
KNOW SIGNATURE | KNOW RESULTS

INDUSTRIAL FOR SALE OR LEASE
4,800 Square Feet Available



PROPERTY FEATURES

- 4,800 square feet available
- 1,800 square foot office
- 12'10" clear height
- (1) 12' x 12' grade level door
- 1000 amps, 480/277 volts, 3-phase, 4-wire
- Rare small stand-alone industrial building
- 1-mile from I-96 freeway
- 100% air-conditioned
- Extra land for building expansion
- Lease Rate: \$11.85/sq. ft. NNN
- Sale Price: \$984,199 (\$205.04/sq. ft.)



For more information, please contact:

CHRIS D'ANGELO
(248) 948 0109
cdangelo@signatureassociates.com

JIM MONTGOMERY
(248) 359 0614
jmontgomery@signatureassociates.com

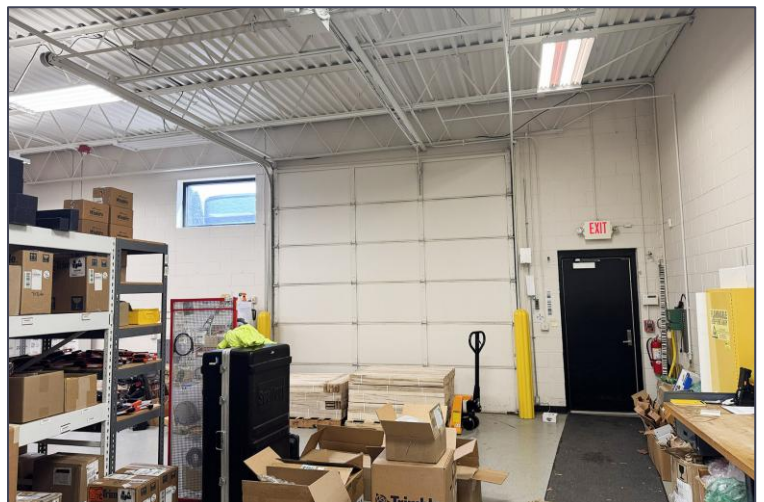
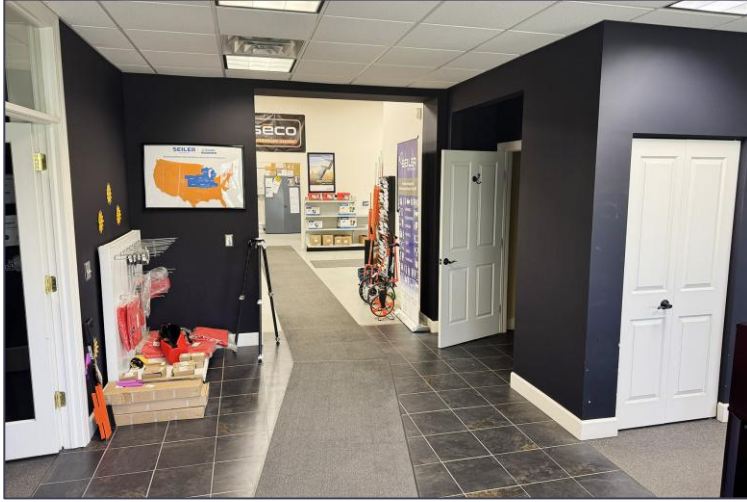
SIGNATURE ASSOCIATES
One Towne Square, Suite 1200
Southfield, MI 48076
www.signatureassociates.com

29485 Lorie Lane - Wixom, Michigan

Industrial For Sale or Lease

4,800
Square Feet
AVAILABLE

Interior Photos



For more information, please contact:

CHRIS D'ANGELO
(248) 948 0109
cdangelo@signatureassociates.com

JIM MONTGOMERY
(248) 359 0614
jmontgomery@signatureassociates.com

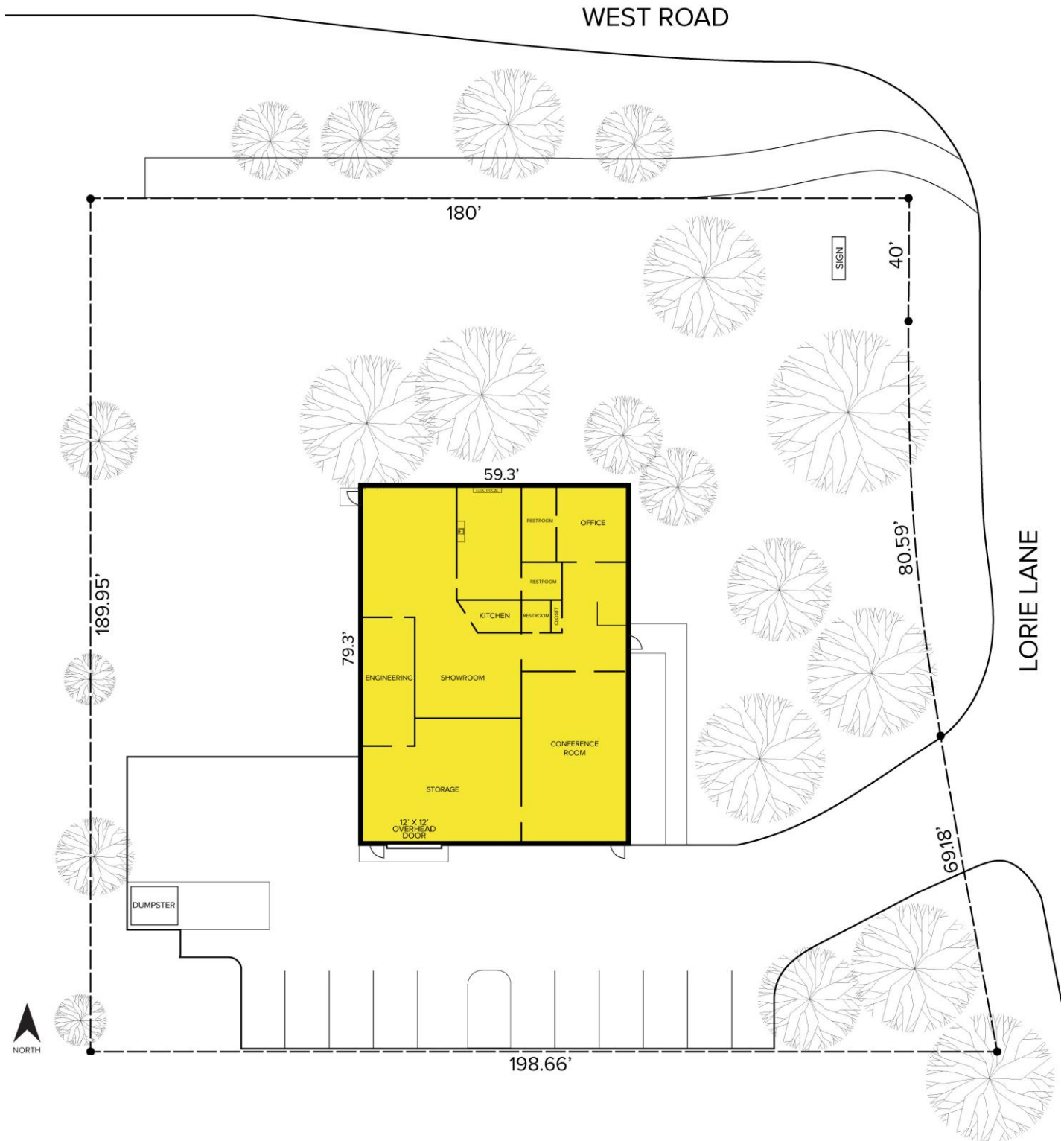
SIGNATURE ASSOCIATES
One Towne Square, Suite 1200
Southfield, MI 48076
www.signatureassociates.com

29485 Lorie Lane - Wixom, Michigan

Industrial For Sale or Lease

4,800
Square Feet
AVAILABLE

Site Plan



For more information, please contact:

CHRIS D'ANGELO
(248) 948 0109
cdangelo@signatureassociates.com

JIM MONTGOMERY
(248) 359 0614
jmontgomery@signatureassociates.com

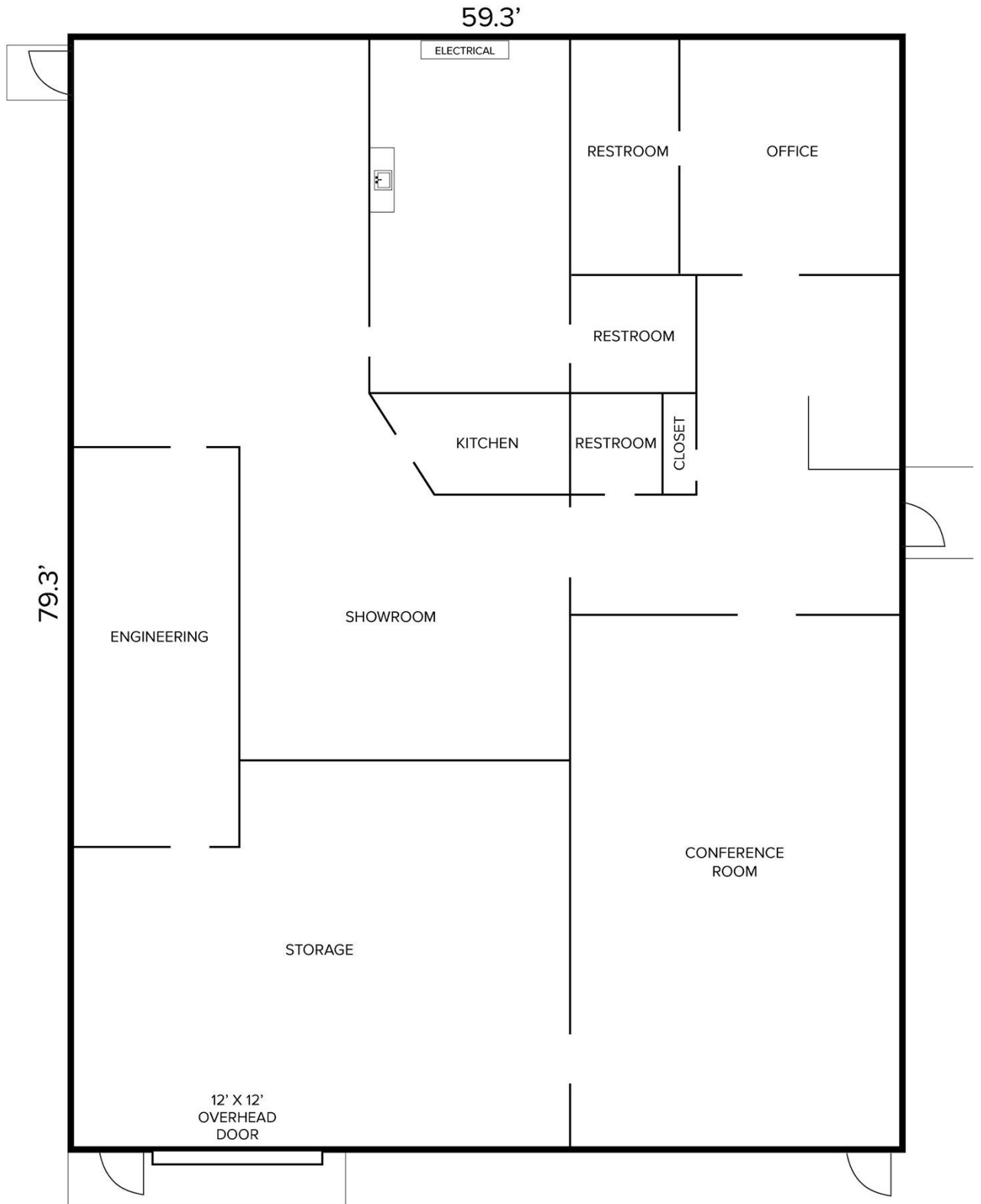
SIGNATURE ASSOCIATES
One Towne Square, Suite 1200
Southfield, MI 48076
www.signatureassociates.com

29485 Lorie Lane - Wixom, Michigan

Industrial For Sale or Lease

4,800
Square Feet
AVAILABLE

Floor Plan



For more information, please contact:

CHRIS D'ANGELO
(248) 948 0109
cdangelo@signatureassociates.com

JIM MONTGOMERY
(248) 359 0614
jmontgomery@signatureassociates.com

SIGNATURE ASSOCIATES
One Towne Square, Suite 1200
Southfield, MI 48076
www.signatureassociates.com

29485 Lorie Lane - Wixom, Michigan

Industrial For Sale or Lease

4,800
Square Feet
AVAILABLE

Aerial



For more information, please contact:

CHRIS D'ANGELO
(248) 948 0109
cdangelo@signatureassociates.com

JIM MONTGOMERY
(248) 359 0614
jmontgomery@signatureassociates.com

SIGNATURE ASSOCIATES
One Towne Square, Suite 1200
Southfield, MI 48076
www.signatureassociates.com