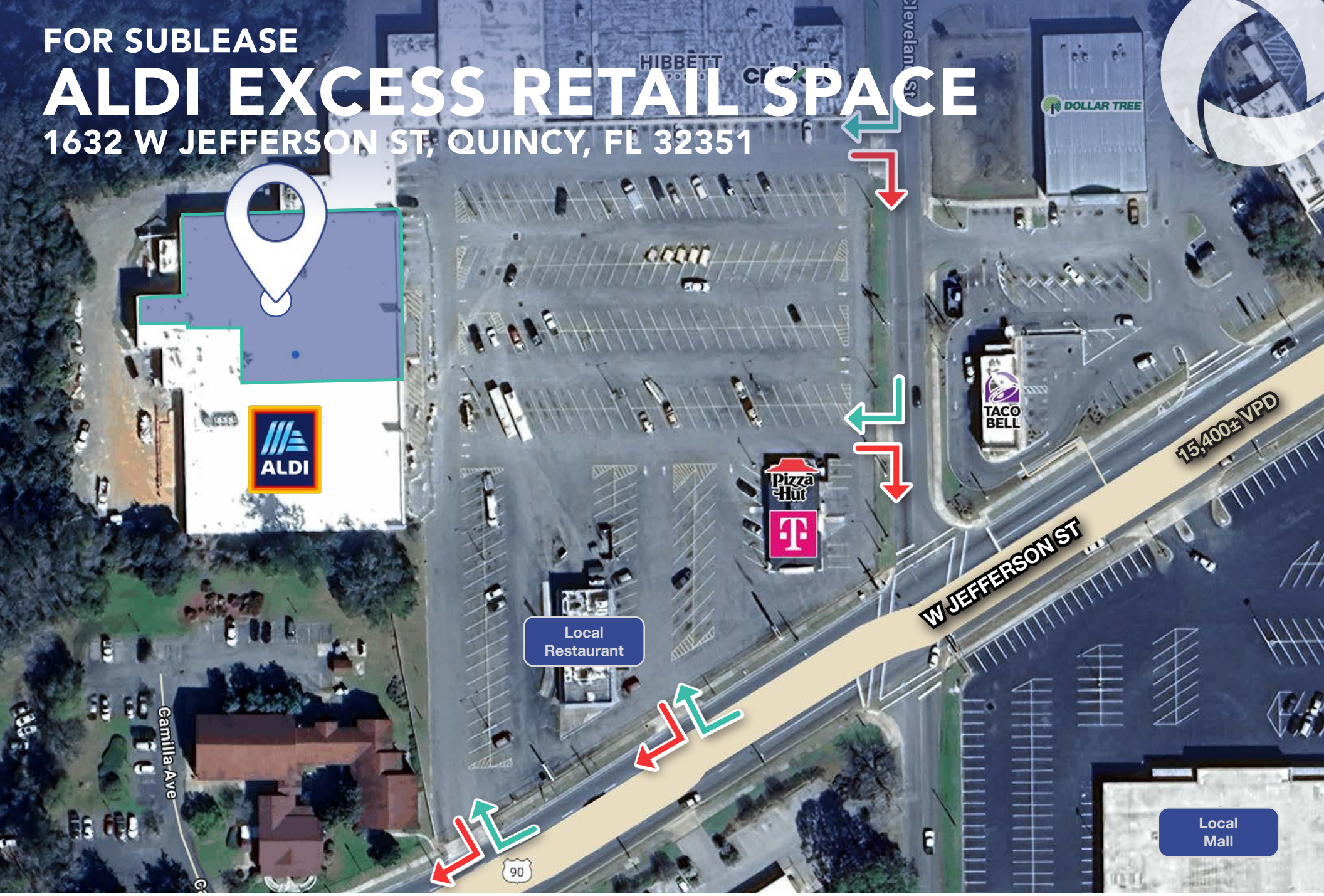


FOR SUBLEASE

# ALDI EXCESS RETAIL SPACE

1632 W JEFFERSON ST, QUINCY, FL 32351



Primary Contact

**Doug Olson**  
Partner  
239.334.3040 x212  
Doug.Olson@TrinityCRE.com

**Clint Betlock**  
Senior Advisor  
**John Paulich IV**  
Senior Advisor

**Matt Fredrickson**  
Partner  
**Gianna Grigaliunas**  
Associate

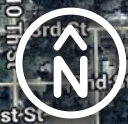
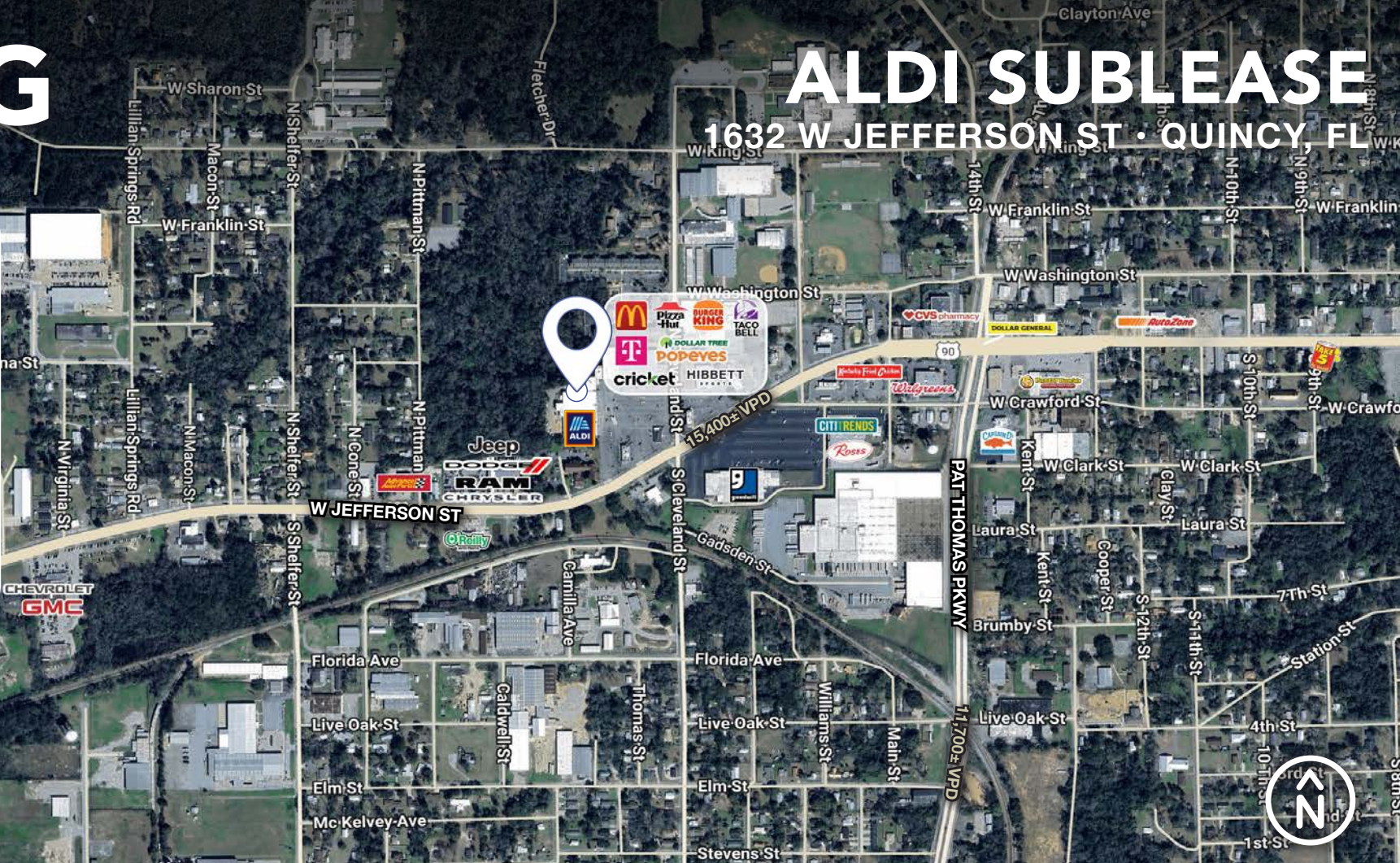
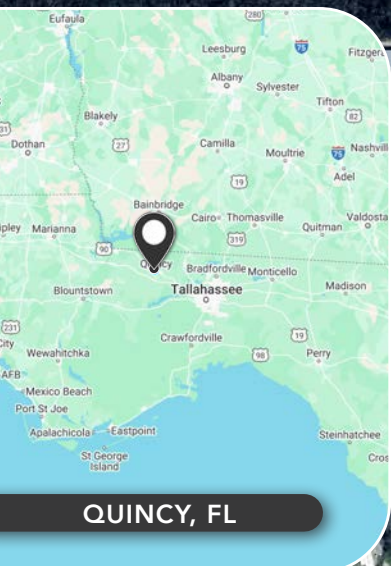
    
TrinityCRE.com





# ALDI SUBLEASE

1632 W JEFFERSON ST • QUINCY, FL



## 2025 DEMOGRAPHICS HISTORIC DISTRICT I QUINCY



**AVERAGE H.H INCOME**

1 MILE	3 MILE	5 MILE	15 Min Drive Time
\$56,608	\$57,329	\$57,475	\$57,936



**POPULATION**

3,826	10,490	15,390	18,159
-------	--------	--------	--------



**EMPLOYMENT DENSITY**

1,833	5,328	6,744	6,940
-------	-------	-------	-------

## PROPERTY DETAILS

<b>PRICE</b>	Call for Details
<b>AVAILABLE</b>	18,418± SF (ALDI Sublease) Includes Loading Dock
<b>ZONING</b>	B-3 (Commercial)
<b>LOCATION</b>	This subject site is located on West Jefferson Street (U.S. Highway 90) in Quincy, Florida, along a key commercial corridor just west of downtown Quincy.



TrinityCRE.com  
© Trinity Commercial Group  
This information is considered accurate, but not guaranteed.

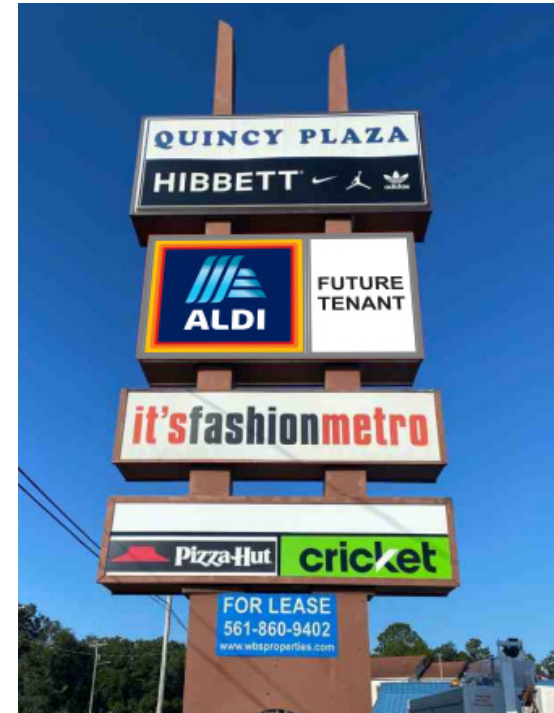
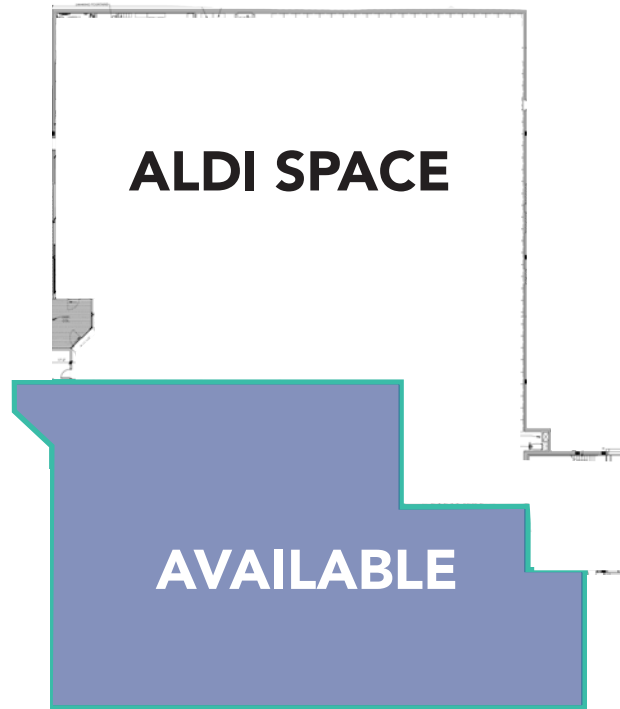
Experts in the Market  
Partners in Your Success





# ALDI SUBLEASE

1632 W JEFFERSON ST • QUINCY, FL



Primary Contact

**Doug Olson**  
Partner  
239.334.3040 x212  
Doug.Olson@TrinityCRE.com

**Clint Betlock**  
Senior Advisor  
**John Paulich IV**  
Senior Advisor

**Matt Fredrickson**  
Partner  
**Gianna Grigaliunas**  
Associate

