

# Seabrook Container Facility

Wildcat Dam Road  
Pooler, Georgia 31322

Lease Rate: Please Inquire

## Contact

**Danny Chase, SIOR**  
Principal  
+1 912 662 8012  
danny.chase@colliers.com

**Sebastian Findlay, SIOR**  
Principal  
+1 912 483 6160  
sebastian.findlay@colliers.com

- ±9 AC trailer yard
- Site Condition: Raw
- Proposed yard allows up to 272 trailer parking spaces
- Container stacking allows three (3) high
- Delivery: 4 - 5 months
- Located 3 miles from both Interstate-16 and Interstate-95, and 10.5 miles from the Georgia Ports Authority's Garden City Terminal

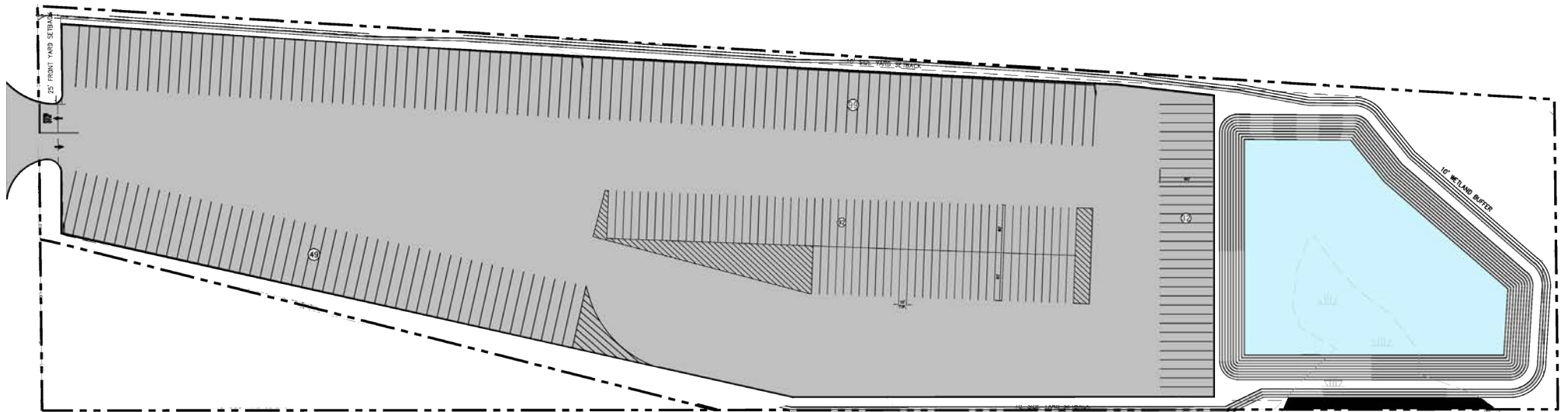


# Construction Progress

December 2022



# Site Plan





Interstate-16 3.0 Miles

Interstate-95 3.0 Miles



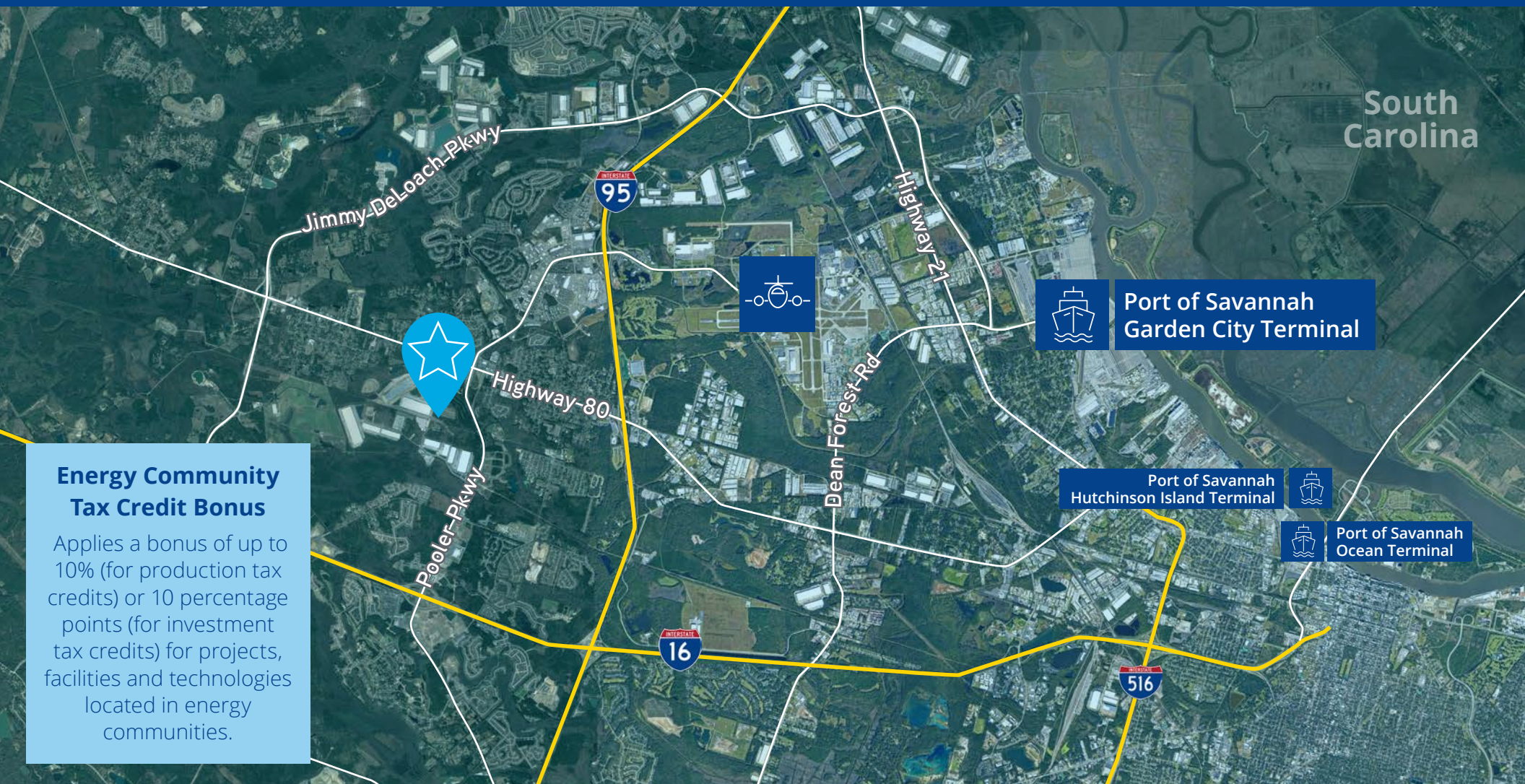
Garden City Terminal 10.5 Miles

Ocean Terminal 11.5 Miles

Hutchinson Island 16.5 Miles



SAV/HH Int'l Airport 5.3 Miles



### Energy Community Tax Credit Bonus

Applies a bonus of up to 10% (for production tax credits) or 10 percentage points (for investment tax credits) for projects, facilities and technologies located in energy communities.

# Port of Savannah



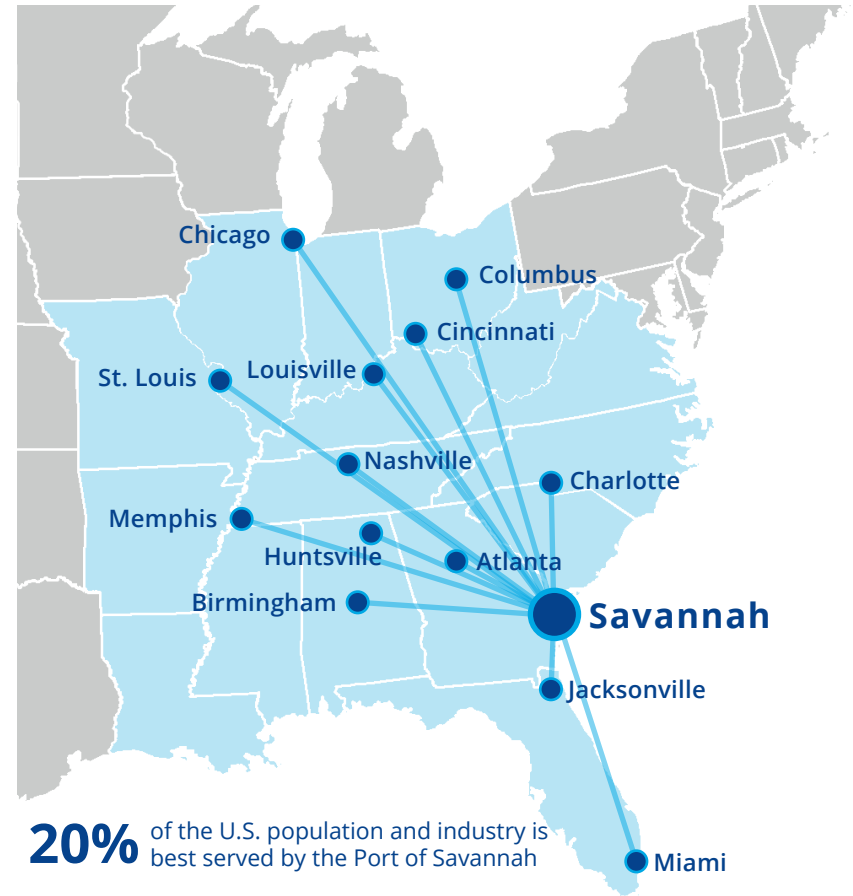
The Port of Savannah is North America's busiest single-terminal container facility with immediate access to two major interstates, I-16 and I-95.

With two Class I railroads (Norfolk Southern and CSX) on terminal with on-dock rail and line haul services, the Port has the capability to deliver to most of the U.S. population and manufacturers within a few days. This capability allows the port's influence to stretch deep into major Mid-West markets like Chicago, St. Louis, and Kansas City.

With significant investment from the State of Georgia and private developers, the Port of Savannah and the surrounding market is anticipated to see substantial growth over the next several decades.

## Planning for the Future

The Georgia Ports Authority has unveiled plans to **expand the port's container capacity by 60%** bringing the Port of Savannah's annual capacity from 6 million twenty-foot equivalent container units to **9.5 million TEUs by 2025**.



**20%** of the U.S. population and industry is best served by the Port of Savannah

**44%** within easy reach of inland connectivity and infrastructure

## Contact

**Danny Chase, SIOR**  
Principal  
+1 912 662 8012  
danny.chase@colliers.com

**Sebastian Findlay, SIOR**  
Principal  
+1 912 483 6160  
sebastian.findlay@colliers.com

Colliers | Savannah  
545 E York Street  
Savannah, GA 31401  
Main: +1 912 233 7111



This document has been prepared by Colliers International for advertising and general information only. Colliers International makes no guarantees, representations or warranties of any kind, expressed or implied, regarding the information including, but not limited to, warranties of content, accuracy and reliability. Any interested party should undertake their own inquiries as to the accuracy of the information. Colliers International excludes unequivocally all inferred or implied terms, conditions and warranties arising out of this document and excludes all liability for loss and damages arising there from. This publication is the copyrighted property of Colliers International and/or its licensor(s). ©2023. All rights reserved.