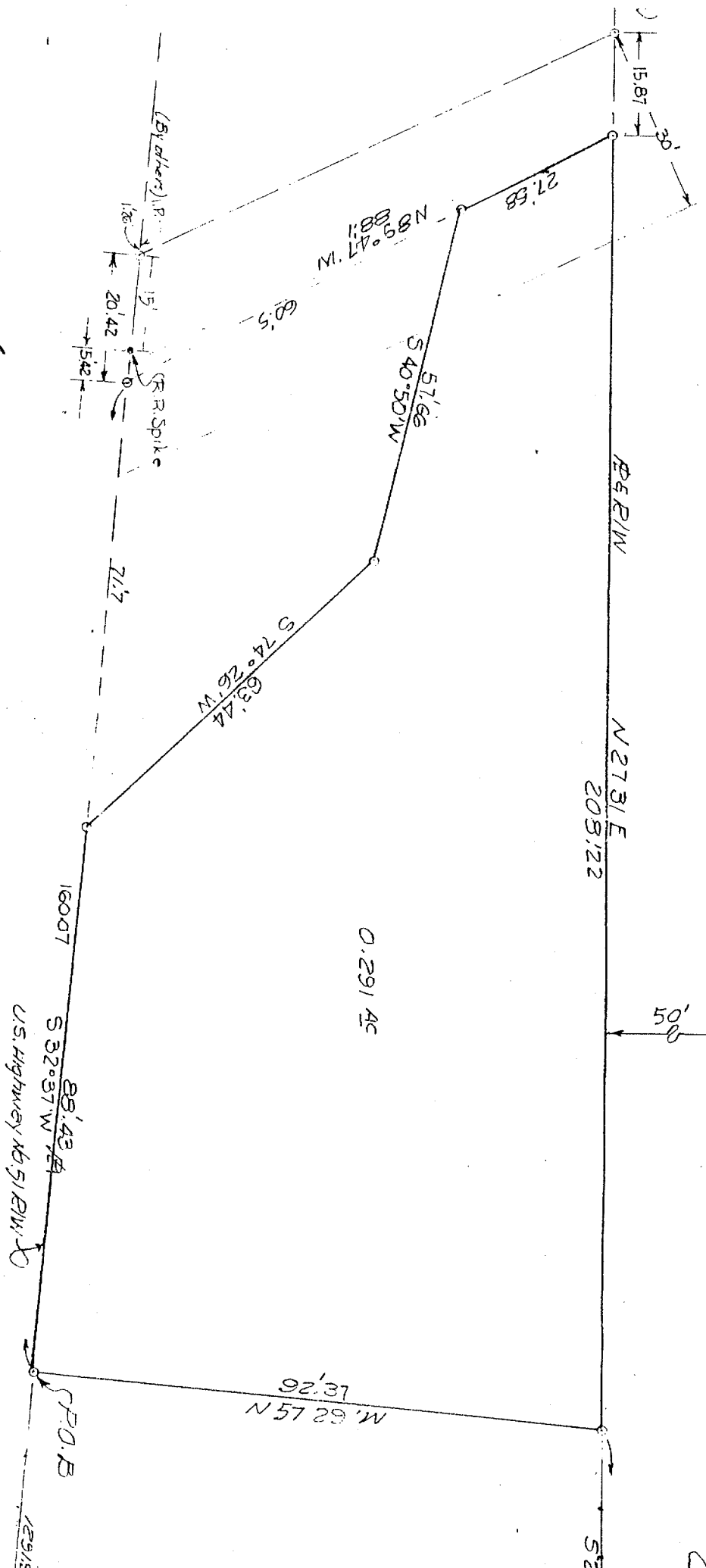


ORLEANS ILLINOIS CENTRAL GULF RR & TRUCK RICHMOND



No 7 to S.W. 1/4  
15 70  
R. O. W. & P.

RIDGELAND, MISS.

PROPERTY LOCATION E 1/2 NE 1/4 SECTION 36 T 7 N, R 1 E

SCALE 1" = 30' JUNE 29 1987

*J. B. WEBB*  
J. B. WEBB