

Mustang South Flex Industrial

1140 & 1160 S Sara Rd, Mustang, OK 73064

MCGEE COMMERCIAL REAL ESTATE



Property Information

Building Size: 22,764 SF
Availability: 3,037 SF NNN
Lease Type: \$11.25 PSF
Rate: Estimated @ 2.91 PSF
Net Expenses:

Property Highlights

- Newly Constructed Flex Industrial
- Located in a well-traveled commercial corridor
- Suites include 200-amp electrical panel, heated warehouse and office build-out
- Pylon sign available for additional visibility off Hwy 4

Availability

- Suite 202: 3,037 SF – Base Rent \$11.25 psf. Including NNN expenses, all in payment estimate \$3,583 a month



Eric Williams

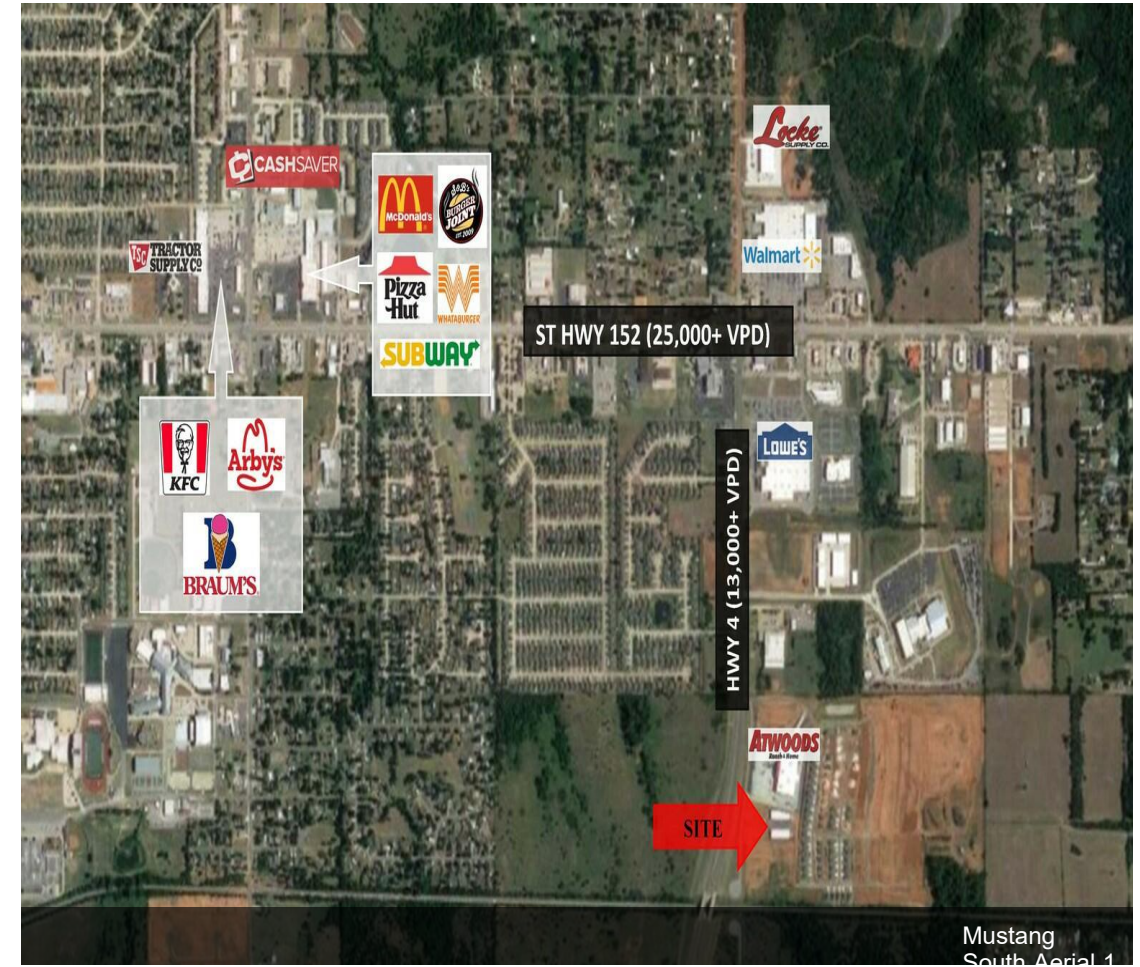
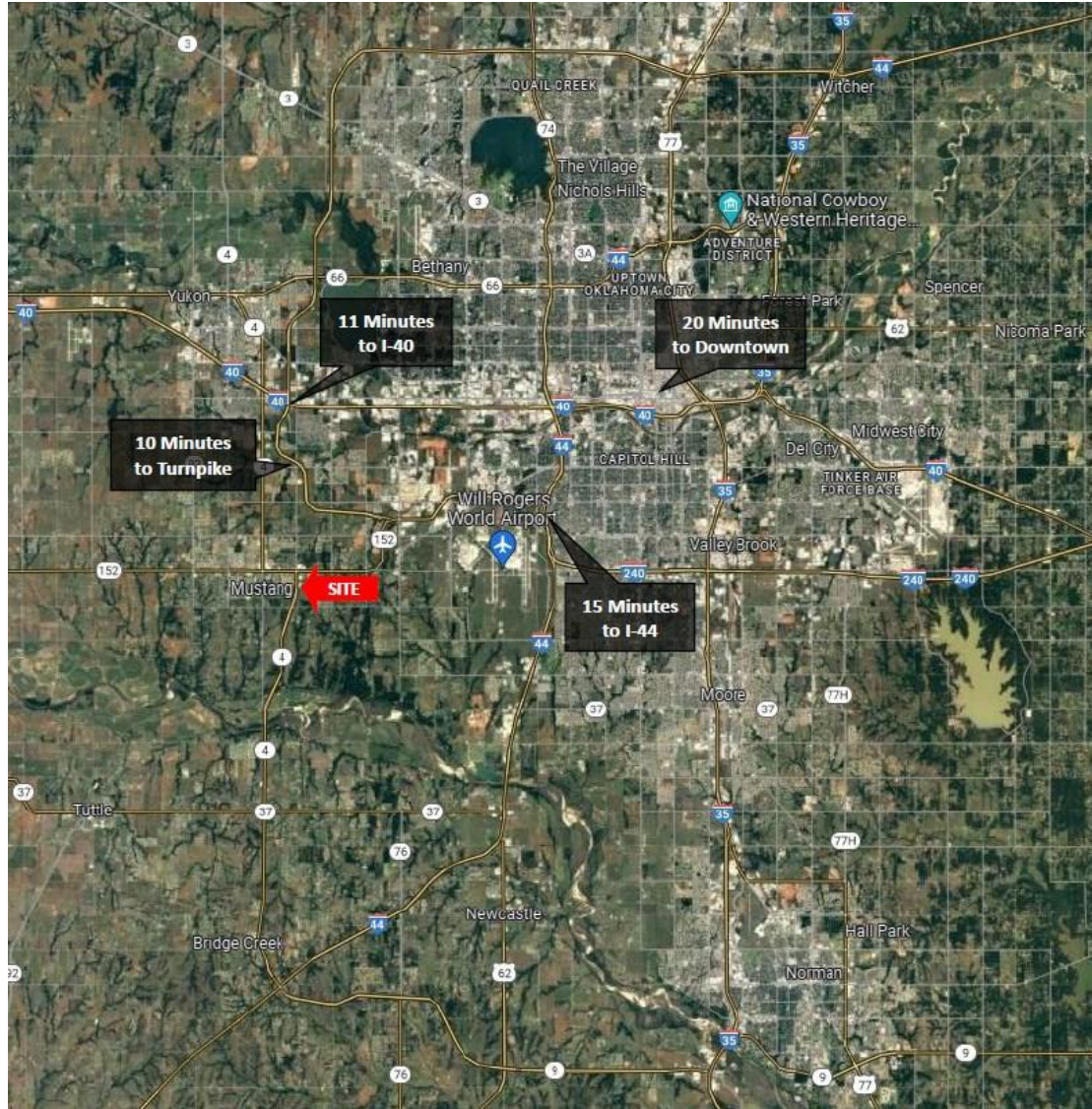
ewilliams@mcgeecre.com

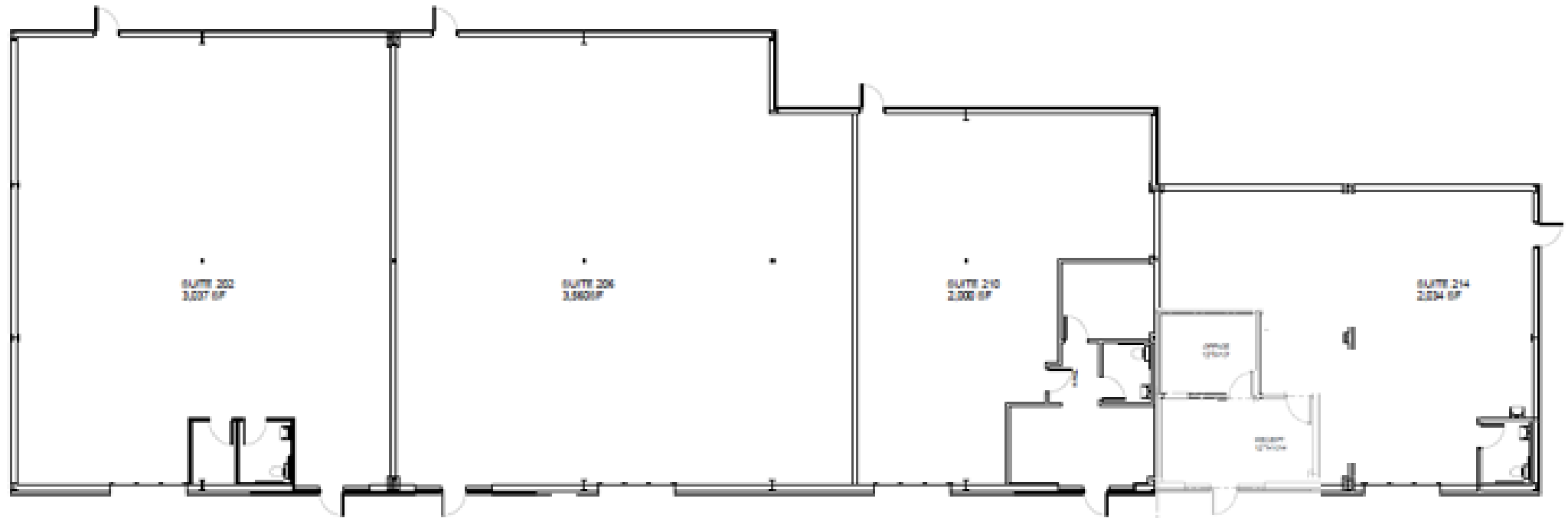
(405) 819-1638

McGee Commercial Real Estate

4324 Grant Blvd

Yukon, OK 73099





OVERALL FLOOR PLAN - BUILDING C

DATE: 11/12/11



